

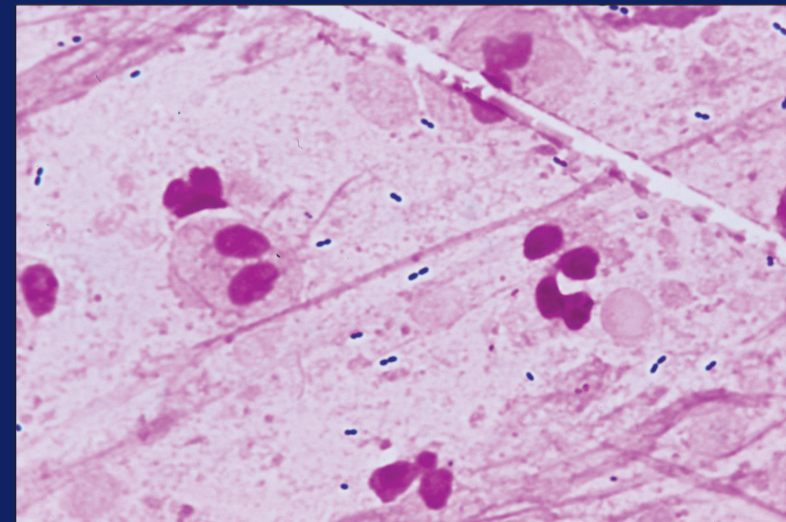


Katholieke Universiteit Leuven

Groep Biomedische Wetenschappen
Faculteit Geneeskunde
Departement Experimentele Geneeskunde
Afdeling Geriatrie

Lower respiratory tract infection in older persons

**Epidemiology with a focus on
*Streptococcus pneumoniae***



Johan Flamaing

Leuven, 2008

