

Article

Platelet Distribution Width Is Associated with P-Selectin Dependent Platelet Function: Results from the Moli-Family Cohort Study

Benedetta Izzi ^{1,*}, Alessandro Gialluisi ¹, Francesco Gianfagna ^{2,3}, Sabatino Orlandi ¹, Amalia De Curtis ¹, Sara Magnacca ³, Simona Costanzo ¹, Augusto Di Castelnuovo ³, Maria Benedetta Donati ¹, Giovanni de Gaetano ¹, Marc F. Hoylaerts ⁴, Chiara Cerletti ¹, Licia Iacoviello ^{1,2} and on behalf of the Moli-family Study Investigators [†]

¹ Department of Epidemiology and Prevention, IRCCS NEUROMED, 86077 Pozzilli, Italy; alessandro.gialluisi@gmail.com (A.G.); sabatino.orlandi@moli-sani.org (S.O.); amalia.decurtis@moli-sani.org (A.D.C.); simona.costanzo@moli-sani.org (S.C.); mbdonati@moli-sani.org (M.B.D.); giovanni.degaetano@moli-sani.org (G.d.G.); chiara.cerletti@moli-sani.org (C.C.); licia.iacoviello@moli-sani.org (L.I.)

² Department of Medicine and Surgery, University of Insubria, 21100 Varese, Italy; francesco.gianfagna@uninsubria.it

³ Mediterranea Cardiocentro, 80133 Napoli, Italy; sara.magnacca@moli-sani.org (S.M.); dicastel@ngi.it (A.D.C.)

⁴ Center for Molecular and Vascular Biology, Department of Cardiovascular Sciences, University of Leuven, 3000 Leuven, Belgium; marc.hoylaerts@kuleuven.be

* Correspondence: izzi.epigenomica@gmail.com

† A full list of the Moli-family Study Investigators is reported in the Appendix A.



Citation: Izzi, B.; Gialluisi, A.; Gianfagna, F.; Orlandi, S.; De Curtis, A.; Magnacca, S.; Costanzo, S.; Di Castelnuovo, A.; Donati, M.B.; de Gaetano, G.; et al. Platelet Distribution Width Is Associated with P-Selectin Dependent Platelet Function: Results from the Moli-Family Cohort Study. *Cells* **2021**, *10*, 2737. <https://doi.org/10.3390/cells10102737>

Academic Editors:
Madhumita Chatterjee,
Judith Cosemans and
Francisco Rivero

Received: 23 September 2021
Accepted: 9 October 2021
Published: 13 October 2021

Publisher's Note: MDPI stays neutral with regard to jurisdictional claims in published maps and institutional affiliations.

Abstract: Defined as an index of platelet size heterogeneity, the platelet distribution width (PDW) is still a poorly characterized marker of platelet function in (sub)clinical disease. We presently validated PDW as a marker of P-selectin dependent platelet activation in the Moli-family cohort. Platelet-bound P-selectin and platelet/leukocyte mixed aggregates were measured by flow cytometry in freshly collected venous blood, both before and after in vitro platelet activation, and coagulation time was assessed in unstimulated and LPS- or TNF α -stimulated whole blood. Closure Times (CT) were measured in a Platelet Function Analyzer (PFA)-100. Multivariable linear mixed effect regression models (with age, sex and platelet count as fixed and family structure as random effect) revealed PDW to be negatively associated with platelet P-selectin, platelet/leukocyte aggregates and von Willebrand factor (VWF), and positively with PFA-100 CT, and LPS- and TNF- α -stimulated coagulation times. With the exception of VWF, all relationships were sex-independent. In contrast, no association was found between mean platelet volume (MPV) and these variables. PDW seems a simple, useful marker of ex vivo and in vitro P-selectin dependent platelet activation. Investigations of larger cohorts will define the usefulness of PDW as a risk predictor of thrombo-inflammatory conditions where activated platelets play a contributing role.

Keywords: platelet distribution width; P-selectin; coagulation; VWF; mean platelet volume; thrombo-inflammation



Copyright: © 2021 by the authors. Licensee MDPI, Basel, Switzerland. This article is an open access article distributed under the terms and conditions of the Creative Commons Attribution (CC BY) license (<https://creativecommons.org/licenses/by/4.0/>).

1. Introduction

Platelet indices are extensively used as diagnostic and prognostic markers in several human pathological conditions. In particular, platelet count (Plt) and mean platelet volume (MPV) are assessed in clinical and population studies, often combined, as markers of platelet function [1]. In addition to the measurement of MPV, optical hematocytometry counters and automated measurements of impedance have allowed definition of the platelet distribution width (PDW), which is a volume parameter, measured as the difference between the highest and the lowest platelet volume, at 20% relative height in the platelet-size distribution histogram [2]. PDW is an index of platelet size heterogeneity,

measuring the spread in platelet volumes [3–5]. It is also a marker of platelet anisocytosis, accompanying platelet activation, during which pseudopods form, increasing platelet diameter and apparent volume [5]. PDW is commonly used for the differential diagnosis of clinical conditions that present with increased platelet destruction or decreased platelet production. These conditions, characterized by modulated megakaryocyte differentiation and thrombopoiesis, in turn affecting platelet size and morphology, include (immune) thrombocytopenia [6] essential thrombocythemia [7] liver cirrhosis with altered platelet homeostasis [8] and idiopathic thrombocytopenic purpura [9].

We recently reported in the Moli-family study a significant association between both PDW and P-selectin dependent platelet activation and platelet endothelial aggregation receptor 1 (*PEAR1*) methylation [10]. *PEAR-1* concentration in platelet membrane is a determinant of secondary platelet activation [11] and has been linked to several indices of platelet activation [12] this finding suggesting that PDW may be a simple, inexpensive, useful marker of thrombo-inflammatory platelet activation in population studies.

Besides its hematological link with deficient platelet production disorders, PDW has been identified as a marker of outcome or prognosis in clinically defined populations of different diseases where (thrombo)inflammation plays a role. These include cancer [13] cardiovascular disease [14,15] type 2 diabetes and metabolic syndrome [16] as well as neurological disorders [17], all conditions characterized by a (sub)clinical inflammation. The PDW relevance as a possible general marker of platelet activation remains, however, poorly defined. We presently investigated the platelet-dependent functional meaning of PDW variability in the Moli-family general population, clarifying its role in relation to *in vivo* platelet activation.

2. Materials and Methods

2.1. Study Population

The Moli-family cohort [10,18] includes 754 white subjects (≥ 15 years old) from 54 extended pedigrees (23 families with personal or familial history of early myocardial infarction (MI)—MI families—and 31 families without MI) recruited in Molise, a region in Southern Italy. All participants were relatives of index subjects enrolled in the general population-based Moli-sani study [19]. Enrollment and data collection were performed as previously described [20] and are further detailed in the supplementary material. The Moli-family study was approved by the Ethical Committee of the Catholic University in Rome, Italy. All subjects provided written informed consent; adult subjects also provided informed consent for their minor children.

2.2. Biochemical Measurements

All hematological analyses were performed by the same cell counter (Coulter HMX, Beckman Coulter, IL Milan, Italy), within 1 h from venipuncture. Soluble P-selectin and von Willebrand factor (VWF) were measured in stored plasma via the Human P-selectin Platinum Enzyme-linked Immunosorbent Assay (ELISA) kit (Affimetrix, eBioscience) [10,21] and the Hemosil[®] von Willebrand Factor Antigen (ELISA kit) (Instrumentation Laboratory), respectively, according to the manufacturer's instructions. High-sensitivity (hs) C reactive protein (CRP) was measured in serum as described [22].

2.3. Cell Functional Assays

Mixed platelet–leukocyte conjugates and platelet P-selectin expression were measured by flow cytometry before and after ADP/collagen stimulation of whole blood as described [18]. The PFA-100 CT was measured according to the gold standard guidelines using the collagen and ADP cartridge (CADP) [23]. Whole blood procoagulant activity was measured by the coagulation time, with or without the addition of bacterial endotoxin (LPS) (100 ng/mL) or tumor necrosis factor (TNF)- α (100 ng/mL) as described [21]. Further details on the protocols used are reported in the Supplementary Methods.

2.4. Statistical Analyses

The final population used in the analyses included a total of 727 subjects (402 women). All analyses were performed using SAS/STAT software (Version 9.4 for Windows[®]2009, SAS Institute Inc., Cary, NC, USA). We first studied if PDW and the other platelet indices distribution was associated with age, sex and main lifestyle variables such as smoking, alcohol consumption, calory intake and body mass index (BMI), comparing their distribution tertiles by ANOVA or Chi-squared test, as appropriate. Second, to investigate apparent distribution relationships between PDW and the other platelet indices, we calculated a Pearson correlation matrix using the following variables: PDW, Plt and MPV. Third, we used multivariable linear mixed effects regression models to test associations between PDW and the above-mentioned platelet function/activation and blood coagulation tests. Age, sex and Plt were treated as fixed effects, and family stratification as a random effect. Because we observed a different distribution of PDW and of several of the variables studied in women vs. men (Supplementary Table S1), all the analyses were also repeated for women and men as two separated groups. In multivariable models, significance was set to $\alpha = 0.007$, correcting for seven latent variables with Eigenvalue > 1, as identified through a principal component analysis (PCA) applied to the Pearson's correlation matrix of all the outcome variables (N = 13). Nominally significant associations with $p < 0.05$ were also reported. All variables used in the analyses were standardized (see below).

3. Results

3.1. Population Characteristics, Correlations and Demographic Variables

Platelet indices and platelet activation/function markers presently studied, as well as differences between women and men are reported in Supplementary Table S1. All three platelet indices measured (PDW, MPV and Plt) followed a normal distribution (Supplementary Figure S1) in line with previous observations in the Moli-sani cohort [24]. Women had lower PDW, higher Plt, ADP/collagen stimulated P-selectin and platelet/leukocyte aggregates compared to men (Supplementary Table S1).

A full descriptive of main population characteristics by PDW tertiles is reported in Table 1. Subjects in the highest tertile of PDW distribution were older, more frequently men and less frequently current smokers; they also reported more intense physical activity. However, BMI, daily energy intake, education and alcohol consumption did not vary significantly across PDW tertiles (Table 1).

Table 1. Moli-family cohort characteristics by PDW tertiles.

Continuous variables	PDW 1st (15.1–16.0 fL)			PDW 2nd (16.1–16.5 fL)			PDW 3rd (16.6–19.5 fL)			Pr > F
	N	Mean	SD	N	Mean	SD	N	Mean	SD	
Age (years)	221	39.94	17.63	268	41.71	19.17	238	46.02	18.73	0.001
BMI (kg/m ²)	219	26.11	4.74	265	26.41	5.82	238	26.77	5.18	0.405
Energy intake (Kcal/d)	203	1655.19	561.05	239	1728.83	526.26	213	1671.63	587.51	0.339
Categorical variables	N	%		N	%		N	%		
Males		77	34.84		125	46.64		123	51.68	0.001
Smoker status (smokers)										0.018
Ever	123	55.66		146	54.48		129	54.2		
Current	73	33.03		82	30.6		57	23.95		
Former	25	11.31		40	14.93		52	21.85		
Physical activity										0.029
Sedentary	76	35.02		92	35.11		62	26.61		
Light physical activity	45	20.47		59	22.52		71	30.47		
Moderate physical activity	72	33.18		65	24.81		63	27.04		
Intense physical activity	24	11.06		46	17.56		36	15.45		
Alcohol consumption										0.092
0 g/day (Former/ever drinker)	78	37.5		82	33.2		64	29.49		
≤12 g/day	78	37.5		107	43.32		79	36.41		
12.1–24 g/day	32	15.38		28	11.34		42	19.35		
>24 g/day	20	9.62		30	12.15		32	14.75		

We computed Pearson's correlations between PDW and the other platelet indices Plt and MPV. PDW was significantly and negatively correlated with Plt ($R = -0.199$, $p < 0.0001$), but not with MPV ($R = 0.032$, $p = 0.38$) in the whole population and in both sex groups separately (Supplementary Table S2). An inverse correlation was also observed between MPV and Plt ($R = -0.371$, $p < 0.0001$; Supplementary Table S2).

3.2. PDW Is Associated with Platelet Activation and Blood Coagulation

We investigated how PDW distribution relates to a number of P-selectin dependent platelet activation tests as measured in the Moli-family cohort [18]. For this purpose, we used multivariate regression analysis with age, sex and Plt as fixed effects and family structure as random effect (Table 2). Plt was used as covariate in the model to verify its potential role as confounder in the associations, given its high correlation with PDW and its association with platelet function/activation and blood coagulation tests (Supplementary Table S3). PDW showed a strong negative association with basal platelet P-selectin expression and platelet/leukocyte aggregates in unstimulated conditions (with P-selectin: $\beta(\text{SE}) = -0.140(0.037)$, $p = 2 \times 10^{-4}$; with platelet/monocyte aggregates: $\beta(\text{SE}) = -0.147(0.036)$, $p = 6 \times 10^{-5}$; with platelet/polymorphonuclear cell (PMN) aggregates: $\beta(\text{SE}) = -0.132(0.036)$, $p = 2 \times 10^{-4}$; Table 2). Concordant associations with smaller effect size were found between PDW and platelet/monocyte aggregates in ADP/collagen stimulated conditions ($\beta(\text{SE}) = -0.090(0.038)$, $p = 0.019$, Table 2). We additionally tested the association between PDW and PFA-100 CT, observing a significant but milder association compared to the other platelet activation markers ($\beta(\text{SE}) = 0.005(0.001)$, $p = 1 \times 10^{-4}$, Table 2). Its effect size increased after correction for VWF levels ($\beta(\text{SE}) = -0.116(0.039)$, $p = 0.003$), in agreement with the predominant role of VWF in platelet function tests carried out in a shear force field [25].

We additionally investigated whether PDW distribution would show an association with whole blood coagulation times, recorded after recalcification of non-stimulated blood and of LPS or TNF- α stimulated blood, measured in the same cohort [21]. Higher PDW was associated with unstimulated ($\beta(\text{SE}) = 0.358(0.200)$, $p = 0.074$) or LPS ($\beta(\text{SE}) = 0.653(0.174)$, $p = 2 \times 10^{-4}$) or TNF- α stimulated coagulation time ($\beta(\text{SE}) = 0.578(0.184)$, $p = 0.002$; Table 2). Yet, PDW was negatively associated with circulating VWF levels ($\beta(\text{SE}) = -0.298(0.098)$, $p = 0.002$; Table 2), including when the association was adjusted by the hematocrit (Hct) ($\beta(\text{SE}) = -0.100(0.039)$, $p = 0.010$).

No other significant association was found between MPV and other coagulation-dependent measurements (Supplementary Table S4). We did not find any significant association of PDW with both plasma P-selectin and CRP levels (Table 2).

Table 2. PDW association with thrombo-inflammatory and coagulation variables.

Variable	PDW														
	ALL @					WOMEN #					MEN #				
	β	SE	<i>Probt</i>	<i>Lower</i>	<i>Upper</i>	β	SE	<i>Probt</i>	<i>Lower</i>	<i>Upper</i>	β	SE	<i>Probt</i>	<i>Lower</i>	<i>Upper</i>
Platelet P-selectin basal	−0.140	0.037	0.00018 *	−0.213	−0.067	−0.127	0.048	<i>0.009</i>	−0.221	−0.032	−0.156	0.059	<i>0.008</i>	−0.271	−0.041
Platelet P-selectin ADP/Collagen	0.002	0.038	0.960	−0.074	0.078	−0.017	0.052	0.748	−0.120	0.086	0.033	0.056	0.562	−0.078	0.143
Platelet/monocyte aggregates basal	−0.147	0.036	0.00006 *	−0.219	−0.076	−0.152	0.049	0.002 *	−0.248	−0.057	−0.134	0.055	<i>0.016</i>	−0.242	−0.026
Platelet/monocyte aggregates ADP/Collagen	−0.090	0.038	<i>0.019</i>	−0.165	−0.015	−0.132	0.046	0.005 *	−0.223	−0.041	0.007	0.068	0.917	−0.127	0.142
Platelet/PMN aggregates basal	−0.132	0.036	0.00024 *	−0.202	−0.062	−0.117	0.046	<i>0.011</i>	−0.206	−0.027	−0.175	0.060	0.004 *	−0.293	−0.057
Platelet/PMN aggregates ADP/Collagen	−0.051	0.037	0.169	−0.124	0.022	−0.106	0.045	<i>0.019</i>	−0.194	−0.017	0.062	0.068	0.362	−0.071	0.195
PFA-100 CT	0.005	0.001	0.00012 *	0.002	0.007	0.005	0.002	0.001 *	0.002	0.009	0.005	0.002	<i>0.019</i>	0.001	0.009
Coagulation time	0.358	0.200	0.074	−0.034	0.751	0.217	0.265	0.414	−0.305	0.739	0.715	0.293	<i>0.016</i>	0.137	1.293
LPS stimulated coagulation time	0.653	0.174	0.00018 *	0.312	0.995	0.607	0.238	<i>0.011</i>	0.139	1.075	0.916	0.250	0.00031 *	0.423	1.410
TNF- α stimulated coagulation time	0.578	0.184	0.002 *	0.217	0.940	0.573	0.240	<i>0.018</i>	0.100	1.045	0.720	0.285	<i>0.012</i>	0.158	1.283
VWF	−0.298	0.098	0.002 *	−0.490	−0.106	−0.452	0.131	0.001 *	−0.710	−0.193	−0.116	0.149	0.436	−0.409	0.177
Soluble P-selectin	−0.093	0.050	0.064	−0.190	0.005	−0.082	0.073	0.258	−0.226	0.061	−0.129	0.066	0.053	−0.260	0.001
CRP	−0.004	0.037	0.910	−0.078	0.069	−0.077	0.052	0.141	−0.180	0.026	0.087	0.055	0.113	−0.021	0.195

@ Model adjusted by age, sex and Plt as fixed effect, family structure as random effect. # Model adjusted by age and Plt as fixed effect, family structure as random effect. Significant *p* values (<0.007) are highlighted by an asterisk, nominally significant *p* values (<0.05) are reported in italics.

The same associations were then tested with MPV since it showed no correlation with PDW and was then hypothesized to tag an independent effect. However, this parameter did not reveal any significant association with any of the variables mentioned above (Supplementary Table S4).

Models unadjusted by Plt are additionally reported in Supplementary Table S5 (PDW) and Supplementary Table S6 (MPV).

3.3. Sex-Specific Analysis

In view of the different distribution of PDW and of several of the variables studied in women vs. men (Supplementary Table S1), we performed the same multivariable regression analysis with age and Plt as fixed effects and family structure as random effect to investigate the association of PDW variability with platelet function/activation measurements in women and men separately. PDW was consistently inversely associated with platelet P-selectin and platelet/monocyte or PMN in unstimulated conditions in both women and men (Table 2). Moreover, the ADP/collagen stimulated platelet/leukocyte aggregates, which were raised in blood after platelet activation (Supplementary Table S1), were significantly higher in both women and men found in the lowest PDW tertile, compared to higher tertiles (Figure 1). We also observed a positive association of PFA-100 CT ($\beta(\text{SE}) = 0.005(0.002)$, $p = 0.001$ in men and $\beta(\text{SE}) = 0.005(0.002)$, $p = 0.019$, in women), which indicates a reduced platelet aggregation activity. In both these cases, adjusting the analysis by VWF levels increased the effect size of the association in women ($\beta(\text{SE}) = 0.116(0.049)$, $p = 0.019$) and men ($\beta(\text{SE}) = 0.140(0.064)$, $p = 0.028$).

LPS and TNF- α coagulation times were both associated with PDW in women and men (Table 2). The negative association between PDW and VWF previously detected in the whole population was mainly driven by the effect observed in women, which was four times higher than in men ($\beta(\text{SE}) = -0.452(0.131)$, $p = 0.001$ and $\beta(\text{SE}) = -0.116(0.149)$, $p = 0.436$, respectively; Table 2 and Figure 2). This association remained significant also by additionally adjusting by Hct ($\beta(\text{SE}) = -0.139(0.052)$, $p = 0.008$).

No significant association was found for both PDW and MPV with plasma P-selectin or CRP in either women or men (Table 2), as observed in the whole population (see above).

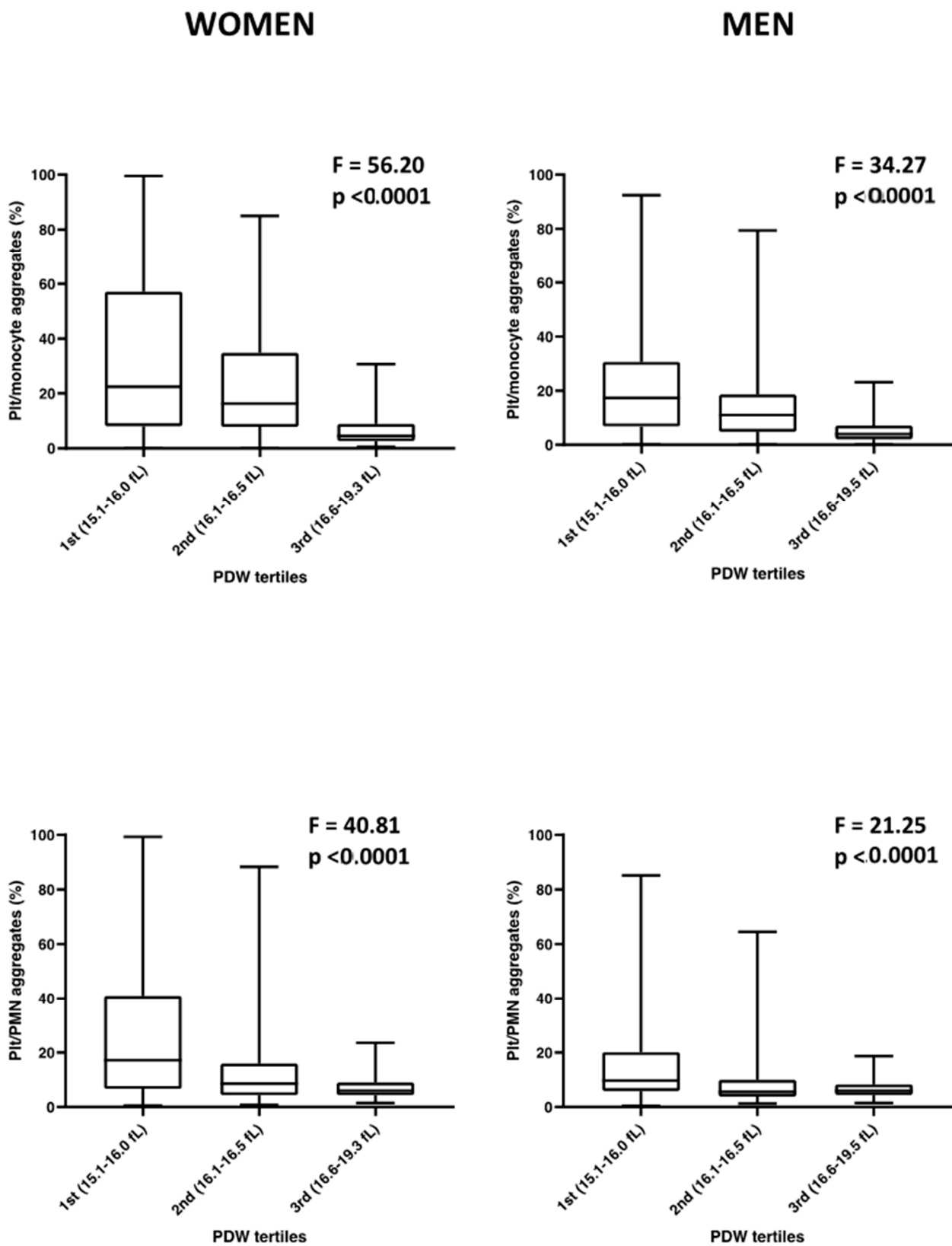


Figure 1. Sex-specific platelet/leukocyte mixed aggregate formation after ADP/collagen stimulation of whole blood, subdivided according to platelet PDW tertiles. Distribution of platelet/monocyte and platelet/PMN mixed aggregates in women and men of the Moli-family cohort over PDW tertiles, as defined by the ranges indicated in parenthesis on the X axis. One-way ANOVA test significance is reported for each graph. N (Women) = 402; N (Men) = 325.

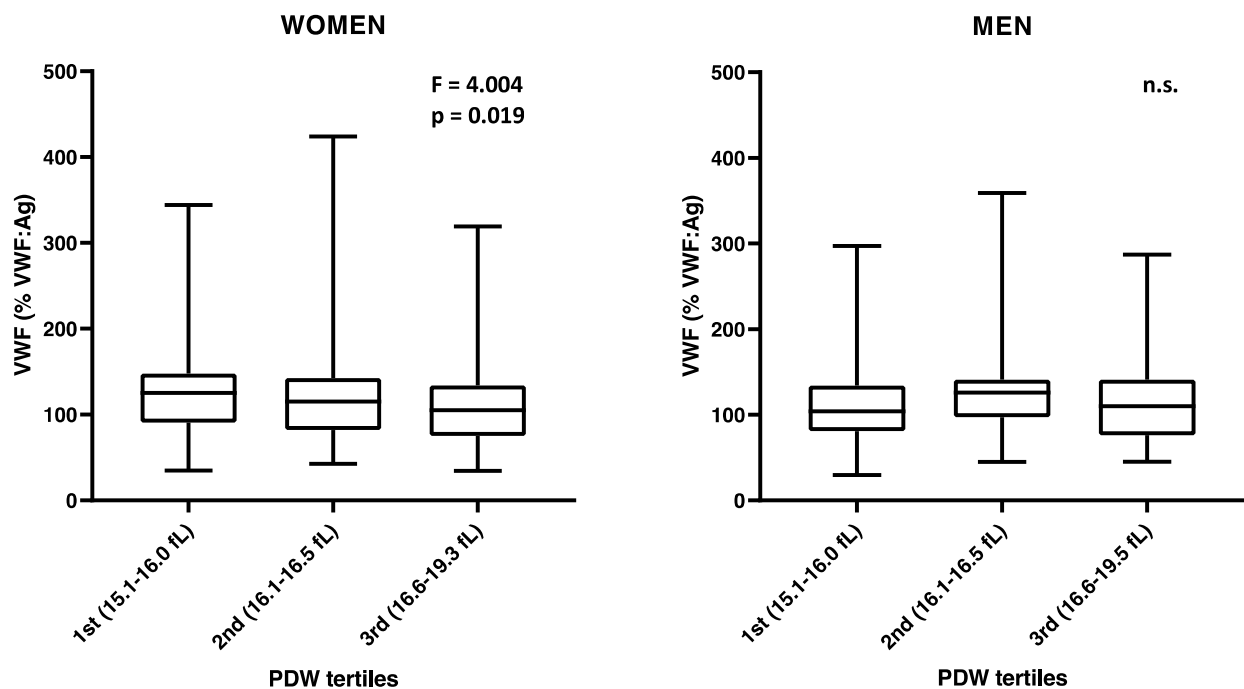


Figure 2. Sex-specific VWF levels by PDW tertiles. Distribution of VWF levels in women and men of the Moli-family cohort over PDW tertiles, as defined by the ranges indicated in parenthesis on the X axis. One-way ANOVA test significance is reported for each graph. N (WOMEN) = 402; N (MEN) = 325.

4. Discussion

Through a functional analysis of platelet-related measurements previously performed in the Moli-family cohort, we show now and for the first time that PDW values reflect P-selectin dependent platelet function, both in women and in men. Although PDW has been considered as a sensitive marker of disease prognosis and diagnosis of several clinical conditions, the relations between PDW, platelet count and MPV in different populations have not been clearly defined [14–17]. Studies on these indices are scarce in general populations [24] and no prior investigation has linked PDW to platelet activation and function *in vivo*.

We found age to be an important determinant of both PDW and P-selectin dependent assays variability: older Moli-family individuals have higher PDW, as well as higher platelet P-selectin dependent activation [18]. Our data indicate that independently on age, individuals with lower PDW values show the highest activity, following platelet activation both *in vivo* and *in vitro*. Platelet P-selectin is a well-known marker of platelet activation and directly mediates vascular inflammation, facilitating leukocyte adhesion to the vessel wall through the formation of hetero-conjugates between platelets and PMNs or monocytes [26].

In accordance with the negative association between PDW and the P-selectin dependent assays, we also found that PDW is positively associated with PFA-100 closure time, a functional test specifically measuring high-shear dependent platelet activation [23]. Higher PDW marks longer PFA-100 closure times, reflecting a reduced platelet activation by ADP/Collagen.

Consistently, we found that low PDW was associated with higher circulating VWF levels, an association apparently and especially driven by the women in the Moli-family cohort (Table 2). Women have significantly higher ADP/collagen stimulated P-selectin expression and platelet/leukocyte mixed aggregates than men (Supplementary Table S1), reflecting the impact that higher platelet activation (low PDW) can have on circulating VWF levels. VWF promotes shear stress-regulated platelet aggregation [27] and platelet clearance [28] and has been recently described to play a role as mediator of thrombo-

inflammation in a mouse model of ischemic stroke [29]. VWF is stored in endothelial cells and in platelet α -granules [30]. During degranulation caused by platelet activation, VWF is released together with other pro-coagulant molecules as well as P-selectin [31].

Our findings also confirm the role of platelet activation in whole blood coagulation since PDW was positively associated with the coagulation times measured in whole blood after stimulation with LPS or TNF- α . During platelet secretion, several procoagulant and anti-coagulant factors as well as polyphosphates supporting factor XII activation are released [32,33]. In addition, strong platelet activation also fosters coagulation via membrane changes rendering factors such as platelet factor 3 (PF3) available for interacting with plasmatic coagulation factors [34]. Platelet P-selectin upregulates tissue factor expression/release by monocytes [35] and is able to bind PSGL-1 on TF-positive extracellular vesicles [36] such that thrombin generation can therefore be accelerated [37] and coagulation can be fostered. As judged from the corresponding β -values of the PDW associations with the coagulation assays, the impact of platelets is considerable, including when coagulation is not supported by those platelets that participate in aggregation, but is assured by ballooning platelets, with high exposure of phosphatidylserine [38].

PDW and MPV are both derived from the same platelet volume distribution histogram; theoretically, they measure size distribution and average platelet size, respectively. Our present analysis, however, shows that PDW and MPV are largely divergent in their relationship with specific platelet activation markers. MPV did not show any association with platelet function tests measured in the present study. Our data indicate that average platelet size variation per se is not a determinant of P-selectin expression during platelet activation. This interpretation of our findings is supported by two arguments. First, besides the absence of any correlation between PDW and MPV, their distribution histograms, in the whole population and in women and men separately, show some differences (Supplementary Figure S1 and Table S1). MPV approached a gaussian distribution, while PDW distribution displayed a slight positive skewness (Supplementary Figure S1). Second, men and women have comparable MPV, but women, with significantly lower PDW compared to men (Supplementary Table S1), showed significantly higher P-selectin dependent markers after ADP/collagen stimulation. All these data further confirm that the average size of resting platelets, as measured by MPV, bears no direct relation with the reactivity of platelets in P-selectin dependent assays. Yet, platelet size and number have long been considered to be one of the major determinants of platelet behavior in hemostasis, thrombosis and inflammation. Large or small platelets have been described to have distinct functional roles [39–49], suggesting that platelet size heterogeneity, measured by PDW, may influence individual platelet response in hemostasis and beyond.

Limitations should be taken into account when considering our findings. First, both MPV and PDW are partially dependent on the technologies used to record them [50]. Based on that, it is not possible to define, at this stage and within this study framework, any cut-off or variable range that can be exported and applied to other cohorts. Second, we need to acknowledge that PDW (and MPV) do not measure exact platelet volumes but rather apparent volume changes that could be influenced by several pathophysiological processes including morphological changes caused by platelet activation, variability in platelet formation and elimination. Third, because of the design of the study, it is not possible to define the potential clinical value of PDW measurements. Cohort studies do not allow drawing conclusions at an individual level, that is required in the clinical laboratory. Our study represents, on the contrary, a first attempt to clarify the possible platelet-related functional meaning of this index based on an observational approach of a general population. Lastly, blood type information relative to the Moli-family participants was not available, we therefore were not able to rule out the influence of this parameter on the association between PDW and VWF.

5. Conclusions

In conclusion, our data link for the first time PDW to P-selectin dependent platelet activation and function in a general population, in the absence of acute cardiovascular disease events. This relationship indicates that PDW is a simple, inexpensive, useful marker of platelet activation in both women and men and is influenced by age. Further investigations of larger cohorts will define whether PDW measurement will be useful in population stratification for risk prediction in diseases where platelets play a contributing role. Larger prospective cohorts with an adequate number of cases and platelet P-selectin dependent variables will allow to determine whether MPV and PDW have additive predictive value as risk factors of thrombo-inflammatory disease.

Supplementary Materials: The following are available online at <https://www.mdpi.com/article/10.3390/cells10102737/s1>, Methods S1, Figure S1: PDW and MPV frequency distribution in the Moli-family cohort, Table S1: Platelet indices, platelet activation/function markers and sex dependent differences of the Moli-family cohort, Table S2: Pearson correlation matrix to test collinearity of PDW with the other platelet indices Plt and MPV, Table S3: Plt association with P-selectin and coagulation assays in the Moli-family cohort, Table S4: MPV association with platelet activation, coagulation and inflammation related variables (Model adjusted by Plt), Table S5: PDW association with platelet activation and coagulation variables (Model unadjusted by Plt), Table S6: MPV association with platelet activation and coagulation variables (Model unadjusted by Plt), Table S7: PDW and MPV descriptive in the Moli-family cohort.

Author Contributions: Conceptualization, B.I., A.D.C. (Augusto Di Castelnuovo), M.B.D., G.d.G., M.F.H., C.C. and L.I.; methodology, B.I., A.G., F.G. and S.O.; formal analysis, A.G. and S.O.; investigation, A.D.C. (Amalia De Curtis) and S.M.; data curation, S.C.; writing—original draft preparation, B.I.; writing—review and editing, A.G., A.D.C. (Augusto Di Castelnuovo), M.B.D., G.d.G., M.F.H., C.C. and L.I.; supervision, A.D.C. (Augusto Di Castelnuovo) and L.I. All authors have read and agreed to the published version of the manuscript.

Funding: The Moli-family study was originally supported by research grants from Telethon foundation (grant GGP04198) (L.I.) and the Italian Ministry of University and Research (MIUR) (Decreto no. 1588-19/11/2004). This project has received funding from the European Union’s Horizon 2020 Research and Innovation Programme under grant agreement no 798841 (B.I.). The present analyses were partially supported by the Italian Ministry of Health 2018 (Young Investigator number: GR-2018-12366528) (B.I.) and by Fondazione Umberto Veronesi (A.G.).

Institutional Review Board Statement: The study was conducted according to the guidelines of the Declaration of Helsinki, and approved by the Ethics Committee of Catholic University, Rome, Italy (260 (A. 82)/C.E./2004 approved on 7/7/2004).

Informed Consent Statement: Informed consent was obtained from all subjects involved in the study.

Data Availability Statement: The data underlying this article will be shared on reasonable request to the corresponding author. The data are stored in an institutional repository (<https://repository.neuromed.it>) and access is restricted by the ethical approvals and the legislation of the European Union.

Conflicts of Interest: The authors declare no conflict of interest. The funders had no role in the design of the study; in the collection, analyses, or interpretation of data; in the writing of the manuscript, or in the decision to publish the results.

Appendix A

Moli-Family Study Investigators

The enrollment phase of the Moli-family Study was conducted at the Research Laboratories of the Catholic University in Campobasso (Italy) between 2005–2007. From 2013, the study is being conducted at the Department of Epidemiology and Prevention of the IRCCS Neuromed, Pozzilli, Italy.

Principal Investigator: Licia Iacoviello (IRCCS Neuromed, Pozzilli, and University of Insubria, Varese, Italy).

Scientific Committee: Chiara Cerletti, Maria Benedetta Donati, Giovanni de Gaetano (IRCCS Neuromed, Pozzilli, Italy), Augusto Di Castelnuovo (Mediterranea Cardiocentro, Napoli, Italy), and Branislav Vohnout (Slovak Medical University, Bratislava, Slovakia).

Data management and analysis: Augusto di Castelnuovo (Mediterranea Cardiocentro, Napoli, Italy), Francesco Gianfagna (Mediterranea Cardiocentro, Napoli, Italy, and University of Insubria, Varese, Italy), Simona Costanzo, Alessandro Gialluisi, Sabatino Orlandi (IRCCS Neuromed, Pozzilli, Italy), and Marco Olivieri (Associazione Cuore Sano, ONLUS, Campobasso).

Biobank and centralized laboratory: Amalia De Curtis (IRCCS Neuromed, Pozzilli, Italy) and Sara Magnacca (Mediterranea Cardiocentro, Napoli, Italy).

Genetic analyses: Benedetta Izzi, Annalisa Marotta, Fabrizia Noro, Roberta Parisi, and Alfonsina Tirozzi (IRCCS Neuromed, Pozzilli, Italy).

References

- Izzi, B.; Bonaccio, M.; de Gaetano, G.; Cerletti, C. Learning by counting blood platelets in population studies: Survey and perspective a long way after Bizzozero. *J. Thromb. Haemost.* **2018**, *16*, 1711–1721. [[CrossRef](#)] [[PubMed](#)]
- Sachdev, R.; Tiwari, A.K.; Goel, S.; Raina, V.; Sethi, M. Establishing biological reference intervals for novel platelet parameters (immature platelet fraction, high immature platelet fraction, platelet distribution width, platelet large cell ratio, platelet-X, plateletcrit, and platelet distribution width) and their correlations among each other. *Indian J. Pathol. Microbiol.* **2014**, *57*, 231–235. [[CrossRef](#)]
- Budak, Y.U.; Polat, M.; Huysal, K. The use of platelet indices, plateletcrit, mean platelet volume and platelet distribution width in emergency non-traumatic abdominal surgery: A systematic review. *Biochem. Med.* **2016**, *26*, 178–193. [[CrossRef](#)]
- Wiwanitkit, V. Plateletcrit, mean platelet volume, platelet distribution width: Its expected values and correlation with parallel red blood cell parameters. *Clin. Appl. Thromb. Hemost.* **2004**, *10*, 175–178. [[CrossRef](#)] [[PubMed](#)]
- Vagdatli, E.; Gounari, E.; Lazaridou, E.; Katsibourlia, E.; Tsikopoulou, F.; Labrianou, I. Platelet distribution width: A simple, practical and specific marker of activation of coagulation. *Hippokratia* **2010**, *14*, 28–32. [[PubMed](#)]
- Borkatak, S.; Jain, R.; Gupta, R.; Singh, S.; Krishan, G.; Gupta, K.; Kudesia, M. Role of platelet volume indices in the differential diagnosis of thrombocytopenia: A simple and inexpensive method. *Hematology* **2009**, *14*, 182–186. [[CrossRef](#)] [[PubMed](#)]
- Lee, E.; Kim, M.; Jeon, K.; Lee, J.; Lee, J.S.; Kim, H.S.; Kang, H.J.; Lee, Y.K. Mean Platelet Volume and Platelet Distribution Width Indicate that Platelets Remain Small for Most of Their Lifespans in Patients with Essential Thrombocythemia. *Clin. Lab.* **2019**, *65*. [[CrossRef](#)]
- Luzzatto, G.; de Franchis, G.; Fabris, F.; Gerunda, G.E.; Girolami, A. Increased proportion of giant platelets and platelet distribution width are better indicators of altered platelet homeostasis than mean platelet volume in liver cirrhosis. *Folia Haematol.* **1988**, *115*, 719–726.
- Ntaios, G.; Papadopoulos, A.; Chatzinikolaou, A.; Saouli, Z.; Karalazou, P.; Kaiafa, G.; Girtovitis, F.; Kontoninas, Z.; Savopoulos, C.; Hatzitolios, A.; et al. Increased values of mean platelet volume and platelet size deviation width may provide a safe positive diagnosis of idiopathic thrombocytopenic purpura. *Acta Haematol.* **2008**, *119*, 173–177. [[CrossRef](#)]
- Izzi, B.; Gianfagna, F.; Yang, W.Y.; Cludts, K.; De Curtis, A.; Verhamme, P.; Di Castelnuovo, A.; Cerletti, C.; Donati, M.B.; de Gaetano, G.; et al. Variation of PEAR1 DNA methylation influences platelet and leukocyte function. *Clin. Epigenetics* **2019**, *11*, 151. [[CrossRef](#)]
- Kauskot, A.; Di Michele, M.; Luyen, S.; Freson, K.; Verhamme, P.; Hoylaerts, M.F. A novel mechanism of sustained platelet alphaIIb beta3 activation via PEAR1. *Blood* **2012**, *119*, 4056–4065. [[CrossRef](#)]
- Eicher, J.D.; Lettre, G.; Johnson, A.D. The genetics of platelet count and volume in humans. *Platelets* **2018**, *29*, 125–130. [[CrossRef](#)]
- Xia, W.; Chen, W.; Tu, J.; Ni, C.; Meng, K. Prognostic Value and Clinicopathologic Features of Platelet Distribution Width in Cancer: A Meta-Analysis. *Med. Sci. Monit.* **2018**, *24*, 7130–7136. [[CrossRef](#)]
- Weymann, A.; Ali-Hasan-Al-Saegh, S.; Sabashnikov, A.; Popov, A.F.; Mirhosseini, S.J.; Nombela-Franco, L.; Testa, L.; Lotfaliani, M.; Zeriouh, M.; Liu, T.; et al. Platelets Cellular and Functional Characteristics in Patients with Atrial Fibrillation: A Comprehensive Meta-Analysis and Systematic Review. *Med. Sci. Monit. Basic Res.* **2017**, *23*, 58–86. [[CrossRef](#)]
- Budzianowski, J.; Pieszko, K.; Burchardt, P.; Rzezniczak, J.; Hiczkiwicz, J. The Role of Hematological Indices in Patients with Acute Coronary Syndrome. *Dis. Markers* **2017**, *2017*, 3041565. [[CrossRef](#)]
- Zaccardi, F.; Rocca, B.; Pitocco, D.; Tanese, L.; Rizzi, A.; Ghirlanda, G. Platelet mean volume, distribution width, and count in type 2 diabetes, impaired fasting glucose, and metabolic syndrome: A meta-analysis. *Diabetes Metab. Res. Rev.* **2015**, *31*, 402–410. [[CrossRef](#)] [[PubMed](#)]
- Izzi, B.; Tirozzi, A.; Cerletti, C.; Donati, M.B.; de Gaetano, G.; Hoylaerts, M.F.; Iacoviello, L.; Gialluisi, A. Beyond Haemostasis and Thrombosis: Platelets in Depression and Its Co-Morbidities. *Int. J. Mol. Sci.* **2020**, *21*, 8817. [[CrossRef](#)] [[PubMed](#)]
- Izzi, B.; Pampuch, A.; Costanzo, S.; Vohnout, B.; Iacoviello, L.; Cerletti, C.; de Gaetano, G. Determinants of platelet conjugate formation with polymorphonuclear leukocytes or monocytes in whole blood. *Thromb. Haemost.* **2007**, *98*, 1276–1284. [[PubMed](#)]

19. Di Castelnuovo, A.; de Curtis, A.; Costanzo, S.; Persichillo, M.; Olivieri, M.; Zito, F.; Donati, M.B.; de Gaetano, G.; Iacoviello, L.; Investigators, M.-S.P. Association of D-dimer levels with all-cause mortality in a healthy adult population: Findings from the MOLI-SANI study. *Haematologica* **2013**, *98*, 1476–1480. [[CrossRef](#)]
20. Gianfagna, F.; Tamburrelli, C.; Vohnout, B.; Crescente, M.; Izzi, B.; Pampuch, A.; De Curtis, A.; Di Castelnuovo, A.; Cutrone, A.; Napoleone, E.; et al. Heritability, genetic correlation and linkage to the 9p21.3 region of mixed platelet-leukocyte conjugates in families with and without early myocardial infarction. *Nutr. Metab. Cardiovasc. Dis.* **2013**, *23*, 684–692. [[CrossRef](#)]
21. Noro, F.; Gianfagna, F.; Gialluisi, A.; De Curtis, A.; Di Castelnuovo, A.; Napoleone, E.; Cerletti, C.; Donati, M.B.; de Gaetano, G.; Hoylaerts, M.F.; et al. ZBTB12 DNA methylation is associated with coagulation- and inflammation-related blood cell parameters: Findings from the Moli-family cohort. *Clin. Epigenetics* **2019**, *11*, 74. [[CrossRef](#)]
22. Bonaccio, M.; Di Castelnuovo, A.; Pounis, G.; De Curtis, A.; Costanzo, S.; Persichillo, M.; Cerletti, C.; Donati, M.B.; de Gaetano, G.; Iacoviello, L.; et al. A score of low-grade inflammation and risk of mortality: Prospective findings from the Moli-sani study. *Haematologica* **2016**, *101*, 1434–1441. [[CrossRef](#)] [[PubMed](#)]
23. Hayward, C.P.; Harrison, P.; Cattaneo, M.; Ortel, T.L.; Rao, A.K.; Platelet Physiology Subcommittee of the Scientific; Standardization Committee of the International Society on Thrombosis and Haemostasis. Platelet function analyzer (PFA)-100 closure time in the evaluation of platelet disorders and platelet function. *J. Thromb. Haemost.* **2006**, *4*, 312–319. [[CrossRef](#)] [[PubMed](#)]
24. Santimone, I.; Di Castelnuovo, A.; De Curtis, A.; Spinelli, M.; Cugino, D.; Gianfagna, F.; Zito, F.; Donati, M.B.; Cerletti, C.; de Gaetano, G.; et al. White blood cell count, sex and age are major determinants of heterogeneity of platelet indices in an adult general population: Results from the MOLI-SANI project. *Haematologica* **2011**, *96*, 1180–1188. [[CrossRef](#)] [[PubMed](#)]
25. Zwaginga, J.J.; Nash, G.; King, M.R.; Heemskerk, J.W.; Frojmovic, M.; Hoylaerts, M.F.; Sakariassen, K.S.; Biorheology Subcommittee of the, S.S.C.o.t.I. Flow-based assays for global assessment of hemostasis. Part 1: Biorheologic considerations. *J. Thromb. Haemost.* **2006**, *4*, 2486–2487. [[CrossRef](#)] [[PubMed](#)]
26. Theilmeier, G.; Lenaerts, T.; Remacle, C.; Collen, D.; Vermynen, J.; Hoylaerts, M.F. Circulating activated platelets assist THP-1 monocytoïd/endothelial cell interaction under shear stress. *Blood* **1999**, *94*, 2725–2734. [[CrossRef](#)]
27. Gao, Z.; Liu, F.; Yu, Z.; Bai, X.; Yang, C.; Zhuang, F.; Ruan, C. Effects of von Willebrand factor concentration and platelet collision on shear-induced platelet activation. *Thromb. Haemost.* **2008**, *100*, 60–68. [[CrossRef](#)]
28. Deng, W.; Xu, Y.; Chen, W.; Paul, D.S.; Syed, A.K.; Dragovich, M.A.; Liang, X.; Zakas, P.; Berndt, M.C.; Di Paola, J.; et al. Platelet clearance via shear-induced unfolding of a membrane mechanoreceptor. *Nat. Commun.* **2016**, *7*, 12863. [[CrossRef](#)]
29. Denorme, F.; Martinod, K.; Vandenbulcke, A.; Denis, C.V.; Lenting, P.J.; Deckmyn, H.; Vanhoorelbeke, K.; De Meyer, S.F. The von Willebrand Factor A1 domain mediates thromboinflammation, aggravating ischemic stroke outcome in mice. *Haematologica* **2021**, *106*, 819–828. [[CrossRef](#)]
30. Sporn, L.A.; Chavin, S.I.; Marder, V.J.; Wagner, D.D. Biosynthesis of von Willebrand protein by human megakaryocytes. *J. Clin. Investig.* **1985**, *76*, 1102–1106. [[CrossRef](#)]
31. Golebiewska, E.M.; Poole, A.W. Platelet secretion: From haemostasis to wound healing and beyond. *Blood Rev.* **2015**, *29*, 153–162. [[CrossRef](#)] [[PubMed](#)]
32. Nurden, A.T. Platelets, inflammation and tissue regeneration. *Thromb. Haemost.* **2011**, *105* (Suppl. 1), S13–S33. [[CrossRef](#)] [[PubMed](#)]
33. Burkhart, J.M.; Gambaryan, S.; Watson, S.P.; Jurk, K.; Walter, U.; Sickmann, A.; Heemskerk, J.W.; Zahedi, R.P. What can proteomics tell us about platelets? *Circ. Res.* **2014**, *114*, 1204–1219. [[CrossRef](#)]
34. De Gaetano, G.; Vermynen, J.; Verstraete, M. Platelet factor 3—Properties and clinical significance. *Adv. Exp. Med. Biol.* **1972**, *34*, 159–172. [[CrossRef](#)]
35. Celi, A.; Pellegrini, G.; Lorenzet, R.; De Blasi, A.; Ready, N.; Furie, B.C.; Furie, B. P-selectin induces the expression of tissue factor on monocytes. *Proc. Natl. Acad. Sci. USA* **1994**, *91*, 8767–8771. [[CrossRef](#)]
36. Falati, S.; Liu, Q.; Gross, P.; Merrill-Skoloff, G.; Chou, J.; Vandendries, E.; Celi, A.; Croce, K.; Furie, B.C.; Furie, B. Accumulation of tissue factor into developing thrombi in vivo is dependent upon microparticle P-selectin glycoprotein ligand 1 and platelet P-selectin. *J. Exp. Med.* **2003**, *197*, 1585–1598. [[CrossRef](#)]
37. Marcus, A.J.; Spaet, T.H. Platelet phosphatides: Their separation, identification, and clotting activity. *J. Clin. Investig.* **1958**, *37*, 1836–1847. [[CrossRef](#)]
38. Agbani, E.O.; van den Bosch, M.T.; Brown, E.; Williams, C.M.; Mattheij, N.J.; Cosemans, J.M.; Collins, P.W.; Heemskerk, J.W.; Hers, I.; Poole, A.W. Coordinated Membrane Ballooning and Procoagulant Spreading in Human Platelets. *Circulation* **2015**, *132*, 1414–1424. [[CrossRef](#)] [[PubMed](#)]
39. Mangalpally, K.K.; Siqueiros-Garcia, A.; Vaduganathan, M.; Dong, J.F.; Kleiman, N.S.; Guthikonda, S. Platelet activation patterns in platelet size sub-populations: Differential responses to aspirin in vitro. *J. Thromb. Thrombolysis* **2010**, *30*, 251–262. [[CrossRef](#)] [[PubMed](#)]
40. Mezzano, D.; Aranda, E.; Foradori, A. Comparative study of size, total protein, fibrinogen and 5-HT content of human and canine platelet density subpopulations. *Thromb. Haemost.* **1986**, *56*, 288–292. [[CrossRef](#)]
41. Polanowska-Grabowska, R.; Raha, S.; Gear, A.R. Adhesion efficiency, platelet density and size. *Br. J. Haematol.* **1992**, *82*, 715–720. [[CrossRef](#)]
42. Frojmovic, M.; Wong, T. Dynamic measurements of the platelet membrane glycoprotein IIb-IIIa receptor for fibrinogen by flow cytometry. II. Platelet size-dependent subpopulations. *Biophys. J.* **1991**, *59*, 828–837. [[CrossRef](#)]

43. Handtke, S.; Steil, L.; Palankar, R.; Conrad, J.; Cauhan, S.; Kraus, L.; Ferrara, M.; Dhople, V.; Wesche, J.; Volker, U.; et al. Role of Platelet Size Revisited-Function and Protein Composition of Large and Small Platelets. *Thromb. Haemost.* **2019**, *119*, 407–420. [[CrossRef](#)] [[PubMed](#)]
44. Karpatkin, S. Heterogeneity of human platelets. I. Metabolic and kinetic evidence suggestive of young and old platelets. *J. Clin. Investig.* **1969**, *48*, 1073–1082. [[CrossRef](#)]
45. Chamberlain, K.G.; Penington, D.G. Monoamine oxidase and other mitochondrial enzymes in density subpopulations of human platelets. *Thromb. Haemost.* **1988**, *59*, 29–33. [[CrossRef](#)] [[PubMed](#)]
46. Clancy, L.; Beaulieu, L.M.; Tanriverdi, K.; Freedman, J.E. The role of RNA uptake in platelet heterogeneity. *Thromb. Haemost.* **2017**, *117*, 948–961. [[CrossRef](#)] [[PubMed](#)]
47. Thompson, C.B.; Jakubowski, J.A.; Quinn, P.G.; Deykin, D.; Valeri, C.R. Platelet size as a determinant of platelet function. *J. Lab. Clin. Med.* **1983**, *101*, 205–213.
48. Li, B.Y.; He, S.Z.; Li, W.H. Heterogeneity of human platelet density subpopulations in aggregation, secretion of ATP, and cytosolic-free calcium concentration. *Zhongguo Yao Li Xue Bao* **1996**, *17*, 152–155.
49. Selvadurai, M.V.; Hamilton, J.R. Structure and function of the open canalicular system—The platelet’s specialized internal membrane network. *Platelets* **2018**, *29*, 319–325. [[CrossRef](#)]
50. Briggs, C. Quality counts: New parameters in blood cell counting. *Int. J. Lab. Hematol.* **2009**, *31*, 277–297. [[CrossRef](#)]