



A Belgian consensus strategy to identify familial hypercholesterolaemia in the coronary care unit and its subsequent cascade screening and treatment: BEL-FaHST (The BELgium Familial Hypercholesterolaemia STRategy)

Olivier S. Descamps^{a,*}, Olivier Van Caenegem^b, Michel P. Hermans^q, Jean-Luc Balligand^c, Christophe Beauloye^b, Antoine Bondue^d, Stéphane Carlier^e, Emilie Castermans^f, Fabien Chenot^g, Marc Claeys^h, Christophe De Blockⁱ, Anne de Leener^j, Antoine De Meester^k, Fabian Demeure^l, Herbert De Raedt^m, Walter Desmetⁿ, Ivan Elegeert^o, Michel Guillaume^p, Etienne Hoffer^r, Raymond Kacenenbogen^s, Patrizio Lancellotti^t, Michel Langlois^u, Attilio Leone^v, Ann Mertens^w, Nicolas Paquot^x, Olivier Vanakker^y, Jean-Louis Vanoverschelde^b, Ann Verhaegen^z, Pieter Vermeersch^{aa}, Caroline Wallemacq^{ab}, Ernst Rietzschel^{ac}, On Behalf of the Belgian Atherosclerosis Society/Belgian Lipid Club (BAS/BLC), the Belgian Society of Cardiology (BSC) and the Royal Belgian Society of Laboratory Medicine (RBSLM)

^a Department of Internal Medicine, Centres Hospitaliers Jolimont, Haine Saint-Paul and Department of Cardiology, UCL Cliniques Universitaires Saint-Luc, Bruxelles, Belgium

^b Department of Cardiology, UCL Cliniques Universitaires Saint-Luc, Bruxelles, Belgium

^c Department of Internal Medicine, Cliniques Universitaires Saint-Luc and Institut de Recherche Expérimentale et Clinique, UCL, Bruxelles, Belgium

^d Department of Cardiology and Centre for Human Genetics, CUB Hôpital Erasme, Université Libre de Bruxelles, Brussels, Belgium

^e Department of Cardiology, Centre Hospitalier Universitaire, Ambroise Paré and Mons University (UMONS), Mons, Belgium

^f Department of Human Genetics, Centre Hospitalier Universitaire Sart Tilman, Liège, Belgium

^g Department of Cardiology, Grand Hôpital de Charleroi, Belgium

^h Department of Cardiology, University Hospital Antwerp, President of the Belgian Society of Cardiology, Belgium

ⁱ Department of Endocrinology-diabetology-metabolism, UA Antwerp University Hospital, UA Universitair Ziekenhuis Antwerpen, Belgium

^j Centre de Génétique Humaine, UCL Cliniques Universitaires Saint-Luc, Bruxelles, Belgium

^k Department of Cardiology, Centres Hospitaliers Jolimont, Haine Saint-Paul, Belgium

^l Department of Cardiology, Cliniques Universitaires de Mont-Godinne, Belgium

^m Department of Cardiology, Onze-Lieve-Vrouw Ziekenhuis, Aalst, Belgium

ⁿ Department of Cardiovascular Medicine, Universitaire Ziekenhuizen Leuven, University Hospitals Leuven, Belgium

^o Department of Cardiology, Algemeen Ziekenhuis, Groninge, Kortrijk, Belgium

^p Department of Cardiology, Centre Hospitalier Universitaire de Charleroi, Belgium

^q Department of Endocrinology & Nutrition, UCL, Cliniques Universitaires Saint-Luc, Bruxelles, Belgium

^r Department of Cardiology, Centre Hospitalier Régional de la Citadelle, Liège, Belgium

^s Department of Cardiology, CHU Saint-Pierre and President of the Working Group of Cardiovascular Readaptation and Prevention, Belgium

^t GIGA Cardiovascular Sciences, Department of Cardiology, Centre Hospitalier Universitaire Sart Tilman, Liège, Belgium

^u Department of laboratory Medicine, Algemeen Ziekenhuis Sint-Jan, Brugge, and National Representative of the Royal Belgian Society of Laboratory Medicine, Belgium

^v Department of Cardiology, Centre Hospitalier Universitaire de Tivoli La Louvière, Belgium

^w Department of Endocrinology, University Hospitals Leuven, Belgium

^x GIGA I3, Department of Diabetes, Nutrition and Metabolic Diseases, Centre Hospitalier Universitaire Sart Tilman, Liège, Belgium

^y Center for Medical Genetics, Ghent University Hospital, Ghent, Belgium

^z Department of Endocrinology, Diabetology and Metabolism, Antwerp University Hospital, Antwerpen, Belgium

^{aa} Department of laboratory Medicine, Senior Clinical Investigator of the Research Foundation-Flanders (FWO), University Hospital Leuven, The Royal Belgian Society of Laboratory Medicine, Belgium

^{ab} Department of Diabetes, Nutrition and Metabolic Diseases, Centre Hospitalier Universitaire Sart Tilman, Liège, Belgium

^{ac} Department of Cardiology, University Hospital Ghent and Ghent University, Belgium

* Corresponding author. Department of Internal Medicine, Centre hospitaliers Jolimont, 159, rue Ferrer, 7100 Haine Saint Paul, Belgium.
E-mail addresses: olivier.descamps@jolimont.be, olivier.descamps@uclouvain.be (O.S. Descamps).

ARTICLE INFO

Article history:

Received 9 March 2018
 Received in revised form
 29 April 2018
 Accepted 22 May 2018

Keywords:

Familial hypercholesterolaemia
 Autosomal dominant lipoprotein disorder
 Low-density lipoprotein cholesterol
 Cardiovascular disease
 Coronary care unit

ABSTRACT

Background and aims: Familial hypercholesterolaemia (FH) is an autosomal dominant lipoprotein disorder characterized by significant elevation of low-density lipoprotein cholesterol (LDL-C) and markedly increased risk of premature cardiovascular disease (CVD). Because of the very high coronary artery disease risk associated with this condition, the prevalence of FH among patients admitted for CVD outmatches many times the prevalence in the general population. Awareness of this disease is crucial for recognizing FH in the aftermath of a hospitalization of a patient with CVD, and also represents a unique opportunity to identify relatives of the index patient, who are unaware they have FH. This article aims to describe a feasible strategy to facilitate the detection and management of FH among patients hospitalized for CVD.

Methods: A multidisciplinary national panel of lipidologists, cardiologists, endocrinologists and cardiogeneticists developed a three-step diagnostic algorithm, each step including three key aspects of diagnosis, treatment and family care.

Results: A sequence of tasks was generated, starting with the process of suspecting FH amongst affected patients admitted for CVD, treating them to LDL-C target, finally culminating in extensive cascade-screening for FH in their family. Conceptually, the pathway is broken down into 3 phases to provide the treating physicians with a time-efficient chain of priorities.

Conclusions: We emphasize the need for optimal collaboration between the various actors, starting with a "vigilant doctor" who actively develops the capability or framework to recognize potential FH patients, continuing with an "FH specialist", and finally involving the patient himself as "FH ambassador" to approach his/her family and facilitate cascade screening and subsequent treatment of relatives.

© 2018 Elsevier B.V. All rights reserved.

1. Introduction

FH remains under-diagnosed and under-treated worldwide [1]. Up to 2013 in Belgium, only a fraction of HeFH carriers have been genetically characterized [2–8]. Many FH patients continue to suffer from early-onset cardiac complications before being diagnosed [9]. Because of the very high coronary risk associated with this disease, the prevalence of FH in patients admitted in coronary care units (CCU) outmatches more than 10 times the frequency observed in the general population (1/300) [10]. In the EUROASPIRE IV study [9], up to 8% of adults hospitalized for acute coronary syndrome (ACS) had clinical criteria compatible with potential FH. The probability of having FH was even greater in women (11%) and in younger patients (15% in those < 60 years). Even if this is an unfortunate reality, the hospitalization of such patients for CVD is a unique opportunity to initiate the first step of FH screening. The present paper summarizes the recommendations based on current evidence and guidelines (² [11,12]) from a consensus panel composed of Belgian cardiologists, endocrinologists, lipidologists and cardiogeneticists to better organize the practice of identifying and managing FH patients following acute admission to CCU.

2. Materials and methods

OD and ER prepared a series of questions intended to achieve a consensus about a number of basic principles and to examine the feasibility and practicality of various actions to take in order to facilitate the suspicion of FH, the confirmation of the diagnosis of FH, the prescription of an appropriate treatment, and the initiation of family screening. A panel of national experts composed of lipidologists, cardiologists, endocrinologists and cardiogeneticists examined the current evidence and guidelines and discussed the possible organization of FH management in their local clinics. Afterwards, OD and ER provided a first draft which was then distributed (2 cycle of reviewing) amongst the other co-authors to receive their comments, suggestions and the final agreement on the paper content.

3. Results

3.1. Basic principles

Briefly, the management of FH implies the ability to suspect FH amongst admitted patients, to adequately control their LDL-C level and, in case of confirmed FH, to propose cascade screening for FH in the patient's family. To reach such objectives, we developed an algorithm that splits each of the processes of diagnosis ("DIAGNOSE"), therapeutic management ("TREAT") and family screening ("FAMILY CARE") of FH into three phases named "ALERT", "CONFIRM" and "EXTEND" (Fig. 1). The idea of breaking down these processes into 3 phases is to provide doctors with a blueprint of what needs to be prioritized during each stage for the 3 processes. It involves the efforts of several stakeholders, starting with a "vigilant doctor" who suspects potential FH patients, then the expertise of an "FH specialist" and later on, the involvement of the patient him/herself as an "FH ambassador".

Since FH is a very specific and time-consuming condition to manage, a cardiologist, endocrinologist or general internist with a dedicated interest and time for FH (the "FH specialist") should be identified in each hospital, ideally assisted by a trained nurse (to educate and contact relatives for family screening) and a geneticist (to demonstrate causality of ambiguous genetic variants). Like a "diabetes clinic", a "FH clinic" should be organized to provide state-of-the-art care for FH patients and their family. The general practitioner also has a role in encouraging patients' adherence to lipid-lowering drugs (LLD), and helping to perform cascade screening as extensively as possible (See Fig. 1).

The collaboration of the patient is central to approaching and motivating his/her family members and facilitating cascade screening. He/she should therefore be fully informed on the hereditary nature of his/her hypercholesterolaemia (especially when FH is confirmed) and be taught how to raise awareness in the family about the necessity to perform a cholesterol test. This may be facilitated by providing informational material on FH or referring to the website of the national patient's association for FH (www.belchol.be in Belgium).

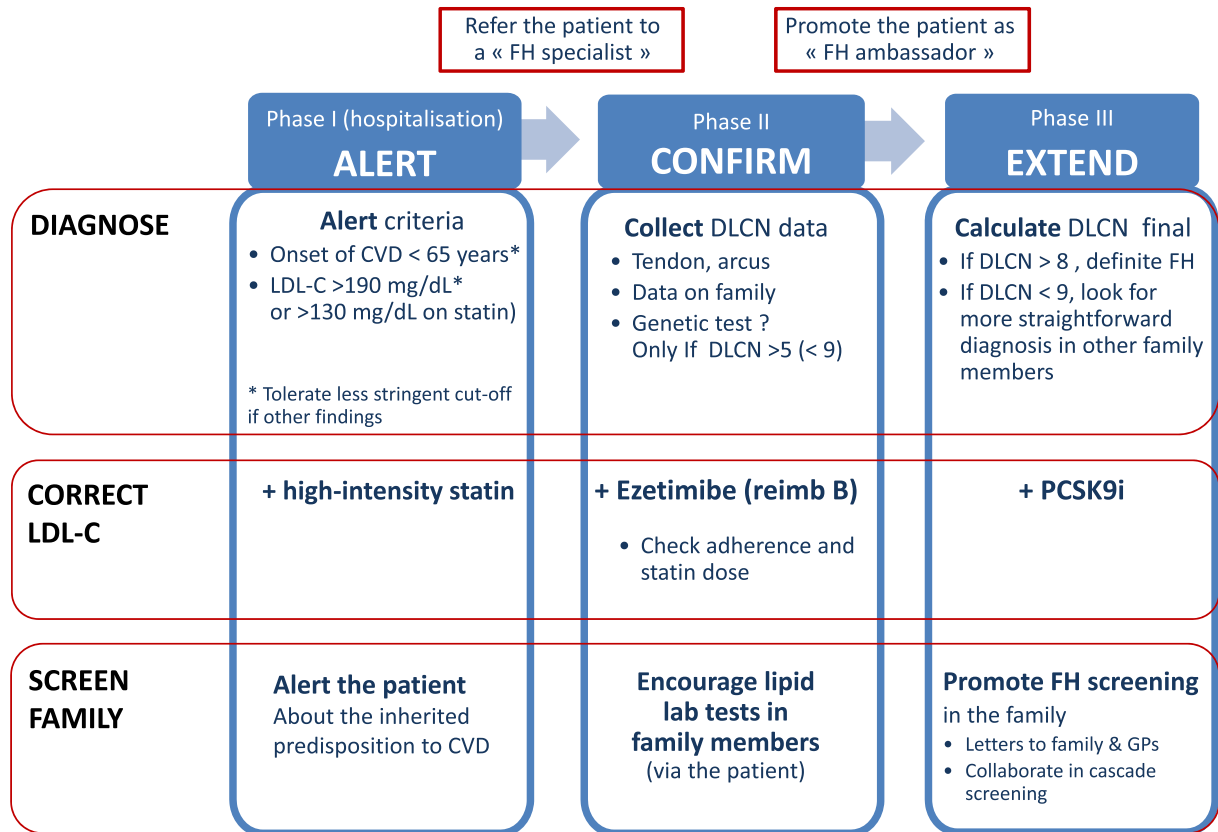


Fig. 1. Algorithm of diagnosis (“DIAGNOSE”), therapeutic management (“CORRECT LDL 70”) and family screening promotion (“FAMILY SCREEN”) of familial hypercholesterolaemia.

3.2. Diagnose

3.2.1. Phase 1. “ALERT”

In a CCU, the first and major step of identifying a potential FH carrier must be integrated amongst other priorities, during a short stay and into the flow of all admitted patients. In such an acute and busy setting, it may not be appropriate to promote the use of an additional score specific to non-urgent FH diagnosis. Therefore, the panel recommends raising suspicion based on 2 simple warning signs for FH which should be checked in all patients admitted for incident CVD.

1. LDL cholesterol level (LDL-C) above 190 mg/dl without treatment, or above 130 mg/dL on LLD(s) in a blood sampling performed as soon as possible after admission (not necessarily in the fasting state); and
2. Age of onset of the acute coronary syndrome (ACS) or any other atherosclerotic disease before 65 years.

LDL-C level is little affected by the postprandial state [13] or by ACS-induced systemic inflammation, an habitual LDL-C lowering effect (10–15%) being maximal after 4 days [14,15]. The cut-off of 190 mg/dL is the limit proposed by guidelines for suspecting FH (1). In patients currently treated with LLD, the inferior limit is expected to be around 130 mg/dL (taking into account the most commonly-used statins, simvastatin 20 or atorvastatin 10 mg, which lower LDL-C by an average 35%), but in case of more intensive LLD, baseline LDL-C may be calculated using the correction factor specific of the ongoing LLD [16]. The panel considers a unique age cut-off for both sexes to facilitate awareness and set at an older age than usual to be more sensitive. The definition of premature family

history in the DLCN is indeed far too restrictive for screening at this stage in such an environment.

These criteria, given as indication, must be nuanced using common clinical sense. For example, the age cut-off may be increased in the presence of conditions decreasing the likelihood of an earlier CV event: absence of any other CV risk factors, healthy lifestyle, longer history of LLD use. The LDL-C cut-offs may also be lowered (>155 mg/dL without previous LLD, and >120 mg/dL with LLD) in the presence of strong pathognomonic signs suggesting FH: very early (<50 years) personal CVD disease, history of premature CVD and/or hypercholesterolaemia in numerous relatives, tendon xanthomas or corneal arcus before 45 years.

In a preliminary observation of 144 admissions for ACS in one CCU (O.V.C., personal observation), it was observed that only 2% of patients met the two criteria (age cut off at 65 years plus LDL-C > 190 or 130 mg/dL with LLD) whereas 6% met the “broader” criteria (age cut off at 65 plus LDL-C > 155 or 115 mg/dL with LLD). Therefore, although these criteria may not seem very specific, they already enable efficient initial selection.

In the presence of these two criteria, the patient must be referred for a visit to an FH specialist.

3.2.2. Phase 2. “CONFIRM”

The first and the subsequent visits to the “FH specialist/clinic” aim at confirming an FH diagnosis using DLCN score and/or deciding whether or not to prescribe confirmatory genetic test. This may often require more than one visit. We try here to answer some questions that are often encountered in clinical practice.

Previous history of abnormally high cholesterol levels or LLD(s).

The lifelong persistence of elevated LDL-C (especially if > 190 mg/dL in adults or >130 mg/dL before 18 years) or early

initiation of LLD during the course of life are indicative of FH. In contrast, existence of previously “normal” LDL-C (around average population level) or elevated triglycerides >200 mg/dL may lower the likelihood of monogenic FH, and rather suggest a polygenic form of FH (eg. familial combined hyperlipidaemia).

3.2.2.1. Corneal arcus and tendon xanthomas. Detecting these requires some skills when examining the eyes and tendons. Tendon xanthomas are most often visible in Achilles tendons and more rarely in extensor tendons of the hands, elbows, heels and knees. Frequently, they are more palpable (feeling a nodule, or abnormal thickening) rather than visible. In case of doubt, an increase in antero-posterior thickness of Achilles tendon (>5,8 mm) demonstrated by echography is suggestive of xanthomas and may reinforce the probability of FH [17]. Unless the thickening is very high (>0,9 mm as suggested by Harada-Shiba M et al. [18]), this cannot replace the criterium ‘tendon xanthomas’ in the DLCN score. History of tendinitis is also indicative, as it occurs more frequently in FH patients. In interpreting these findings, it is important to exclude a previous history of tendon surgery, trauma, hyperuricemia or other conditions for tendinitis or tendon swelling.

Corneal arcus is more difficult to see on a clear (blue or green) iris, is often incomplete and/or hidden behind eyelids (it is thus important to raise eyelids, and instruct patients to look down). It is only pathognomonic of FH if discovered before the age of 45 years. However, the finding of an extensive or complete corneal arcus even at 50 years of age, is indicative of an earlier-onset. Xanthelasma (sharply demarcated yellowish collections of cholesterol underneath the skin, usually on or around eyelids) are not specific of FH.

3.2.2.2. Family data. History of hypercholesterolaemia in other members of the family (including children above 4 years) is often difficult to ascertain. The information that a relative was given a statin at a younger age may be of great interest. These points should ideally be further clarified during the forthcoming visit by asking the patient to collect more data on his/her relatives.

3.2.2.3. First DLCN assessment and genetic test prescription. On the basis of the evidence already gathered, the FH specialist can compute the DLCN score. If > 8, it follows that the patient has FH with a high level of confidence. In this case, a genetic test is not necessary but could confirm the diagnosis as well as identify the molecular defect underlying the dyslipidemia, and may be of help in subsequent cascade screening (especially to facilitate identification of relatives with borderline cholesterol levels, especially in children). The borderline situation of DLCN between 6 and 8 often occurs in the absence of tendon xanthomas, corneal arcus <45 years, or LDL-C >330 mg/dL. Efforts should primarily be made to gain additional data (lipid levels in children or tendon echography, ...) that may raise the DLCN score > 8. Otherwise, it is worth in such situation to ask for a genetic test. For a DLCN score between 3 and 5, when there are strong suggestive elements to suspect FH, ordering a genetic analysis may also be justified. There are also situations where calculation of DLCN score is somewhat compromised and in which genetic testing may be useful: no known or living relatives (adoption; parents deceased at a younger age from non-CV causes, no contact with the family), presence of corneal arcus in a patient older than 45 years or previous history of local disease on the tendon.

We developed a table with criteria selected for helping clinicians to decide whether or not to prescribe genetic tests (Table 1). Supplementary Tables 1 and 2 summarize some of the ethical issues, benefits, indications and cautions regarding genetic testing. Genetic analysis has a significant cost, is potentially time-consuming (obtaining results may take 2–5 months), requires

informed consent of patients on the various ethical issues, and may identify genetic variations of uncertain significance requiring additional investigations to confirm/refute causality in hypercholesterolemia. A negative genetic test does not automatically exclude FH if the DLCN score is high. In previous studies, when patients were classified on the basis of the DLCN score, 70% of “definite” FH patients were found to carry a pathogenic variant, only 29% of “probable” FH and 11% of “possible” FH patients were variant positive [19].

3.2.3. Phase 3. “EXTEND”

At this stage, a diagnosis of FH can be finalized using all confirmation data collected (including genetic test if performed). If the DLCN remains <8 and the genetic test is negative (Supplementary Tables 1 and 2), the clinician should not necessarily abandon the search. Sometimes, a confirmatory diagnosis may prove easier to obtain from one relative and the clinician should make every possible effort to invite some adult relatives to be examined in search of FH-specific signs (such as corneal arcus in those <45 years or tendon xanthomas) or children with LDL-C >190 mg/dL (Fig. 2). Such confirmation in other family member(s) is a good argument to reinforce clinical diagnosis in the index patient.

3.3. TREAT

3.3.1. Phase 1. “ALERT”

For patients with established CHD, as considered in the present paper, initiation of LLD does not really depend upon confirmation of FH and must be implemented as early and as intensively as possible in order to achieve target LDL-C level (<70 mg/dL, which in FH patients with very elevated baseline LDL-C means a LDL-C reduction of ≥50%) as per current European guidelines for patients in secondary prevention [12]. This requires prescription of high-intensity statins at the highest-tolerated dose (atorvastatin 40–80 mg, rosuvastatin 20–40 mg) as soon as possible, preferably on first admission day for ACS. If the patient is already on low- or moderate-intensity statin, a shift to a high-intensity statin must be considered. If the patient is already on high-intensity statin, the combination of statin with ezetimibe should be considered.

3.3.2. Phase 2. “CONFIRM”

Successive visits to the “FH specialist” also have as objective ensuring drug compliance and adherence, titrating statins and/or adding other LLD in order to achieve LDL-C <70 mg/dL. Often, early combination with ezetimibe is required to achieve an extra 20–25% LDL-C reduction, far greater than the 6% additional reduction obtained by doubling statin dosage.

3.3.3. Phase 3. “EXTEND”

Even with high-intensity statins combined with ezetimibe, many FH patients still have elevated LDL-C. Therefore, at this stage, one may consider the addition of anti-PCSK9 monoclonal antibodies. Alirocumab in the ODYSSEY HIGH FH trial [20,21] and evolocumab in the RUTHERFORD trial [22] have induced drastic reductions of LDL-C (–40 to –60%) in FH patients on maximally-tolerated statin (±other LLD), allowing to achieve LDL-C target (<70 mg/dl or <100 mg/dl) in the majority of these patients [23].

3.4. Family care

The process of “FAMILY CARE” includes different objectives: raising awareness of familial predisposition to CVD risk, collecting data on cholesterol values to calculate DLCN scores and cascade-

Table 1
Probabilities that a genetic test will be positive in various situations where DLCN is ≤ 9 .

LDL-C (mg/dL)	Other findings	Probability that genetic test will be positive
≥ 330	None (no family data)	Very high
250–329	Family (\pm personal) history but no tendon xanthomas * or corneal arcus before age 45 years ** No family data***, with or without personal history and no other findings	High High
190–249	No family (\pm personal) history and no other findings Family (\pm personal) history but no tendon xanthomas * or corneal arcus before age 45 years ** No family data***, with or without personal history and no other findings	moderate Moderate Moderate
150–189	No family (\pm personal) history and no other findings Family (\pm personal) history but no tendon xanthomas * or corneal arcus before age 45 years ** No family data***, with or without personal history and no other findings No family (\pm personal) history and no other findings	Low Low Low Very low

*No tendon xanthomas or presence of tendon swelling but possibly due to other causes than FH.

**Patients is younger than 45 but has no corneal arcus or patients has corneal arcus but is older than 45 years at the moment of the examination.

***No family data may occur for example in the absence of know parents (orphan), if parents and grand-parents died early of other causes, when contact was lost with the family or in case of small family.

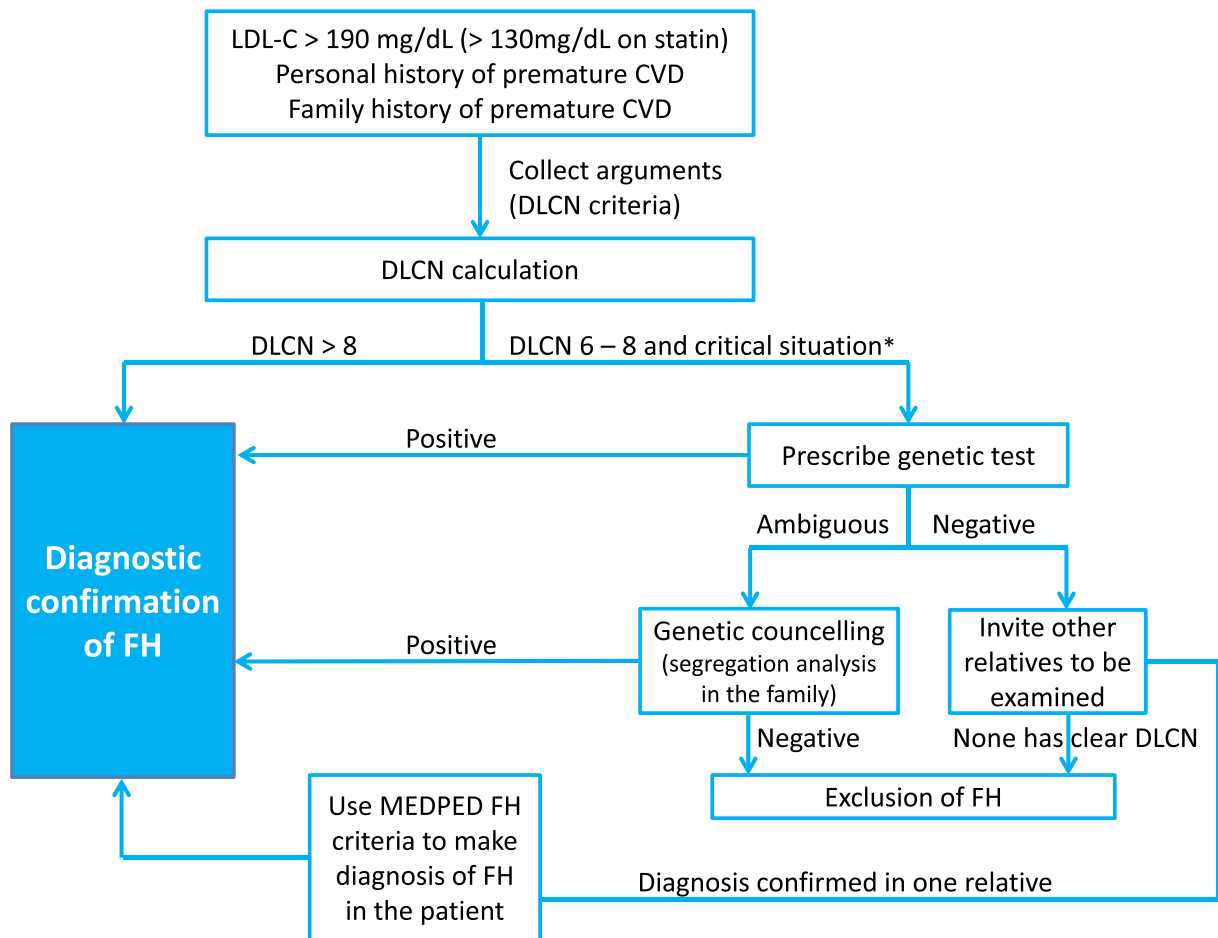


Fig. 2. Algorithm of progression in the diagnostic confirmation (or exclusion) of FH.

screening for FH. The patient's collaboration is absolutely necessary at all stages and they need to be thoroughly motivated.

3.4.1. Phase 1. "ALERT"

When a patient suffers from CVD at an early age (<55 years in men and <60 years in women), it is usually recommended that family members be screened for lipid- and non-lipid-related CV risk factors. In this case, it is vital to notify the patient, as soon as possible, on the existence of a familial predisposition to CVD, so they may alert relatives on possible CV risk. Conversely, relatives

may provide patient with additional information regarding their personal histories of hypercholesterolaemia, LLDs, and CVDs, which may help refining family data. It is however premature, at this stage, to work more actively on risk identification within the family.

3.4.2. Phase 2. "CONFIRM"

At this phase, still considered exploratory, the "FH specialist" will essentially try to "confirm" as much as possible the data regarding family history. At this stage, the patient may be provided with requests for laboratory testing (total cholesterol, LDL-C, HDL-

Familial Hypercholesterolaemia

Recommendations for screening in adults

Atherosclerotic disease < 65 years
AND
LDL-C > 190 mg/dL without statin²
OR LDL-C > 130 mg/dL with high or moderate statin dose¹
AND
Family history of premature* cardiovascular events

*premature: men < 55 year, women < 60 year

Probable Familial Hypercholesterolaemia

Refer the patient to Doctor ... to confirm the clinical diagnosis using **DLCN score^{3,4}**, to achieve LDL-C target (< 70 mg/dL) and initiate **cascade screening** of the family members³

Categories	Points	
1. Family history : First-degree relative with		Add up the score for each category (e.g. family history, clinical history, LDL-C level etc.) to determine the diagnosis
a. known premature* coronary heart disease (CHD)	1	
b. (In adult) LDL-C ≥190 mg/dl	1	
c. (in children) LDL-C ≥135 mg/dl	2	
c. with corneal arcus before age 45 and/or tendon xanthoma	2	
2. Premature * personal history of		Add up the score for each category (e.g. family history, clinical history, LDL-C level etc.) to determine the diagnosis
a. Coronary disease	2	
b. cerebral or peripheral vascular disease	1	
3. Physical examination		Add up the score for each category (e.g. family history, clinical history, LDL-C level etc.) to determine the diagnosis
Tendon xanthoma	6	
Corneal arcus in a person <45 years	4	
4. Baseline LDL-C level (before treatment)**		Add up the score for each category (e.g. family history, clinical history, LDL-C level etc.) to determine the diagnosis
LDL-C ≥ 330mg/dl	8	
LDL-C between 250 et 329mg/dl	5	
LDL-C between 190 et 249mg/dl	3	
LDL-C between 150 et 189mg/dL	1	
5. Molecular genetic testing (DNA analysis)		Add up the score for each category (e.g. family history, clinical history, LDL-C level etc.) to determine the diagnosis
Causative mutation shown in the LDLR: APOB or PCSK9 genes	8	

Total score

>8 : Definite FH

6–8 : Probable FH

3–5 : Possible FH

0–2 : Unlikely FH

* Premature : men < 55 year, women < 60 year

**** How to extrapolate baseline LDL-C: multiply the correction factor specific to treatment with the current LDL-C**

Correction factors specific to treatment		
Type and dose of statin	Without ezetimibe	With ezetimibe
None	-	1,2
Pravastatin	10	1,2
	20	1,3
	40	1,5
Simvastatin	10	1,4
	20	1,6
	40	1,7
Atorvastatin	10	1,6
	20	1,8
	40	2,2
Rosuvastatin	5	1,8
	10	1,9
	20	2,1
	40	2,4

Correction Factor																																																																																																																																																																																																																																																																																																																																																																																																																																																																																																																																																																																																																																																																																																																																																																																																																																																																																																																																																																																																																																																																																																																												
Treated LDL	1,1	1,2	1,3	1,4	1,5	1,6	1,7	1,8	1,9	2	2,1	2,2	2,3	2,4	2,5	2,6	2,7	2,8	2,9	3	3,1	3,2	3,3	3,4	3,5	3,6	3,7	3,8	3,9	4	4,1	4,2	4,3	4,4	4,5	4,6	4,7	4,8	4,9	5	5,1	5,2	5,3	5,4	5,5	5,6	5,7	5,8	5,9	6	6,1	6,2	6,3	6,4	6,5	6,6	6,7	6,8	6,9	7	7,1	7,2	7,3	7,4	7,5	7,6	7,7	7,8	7,9	8	8,1	8,2	8,3	8,4	8,5	8,6	8,7	8,8	8,9	9	9,1	9,2	9,3	9,4	9,5	9,6	9,7	9,8	9,9	10																																																																																																																																																																																																																																																																																																																																																																																																																																																																																																																																																																																																																																																																																																																																																																																																																																																																																																																																																																																																																																		
70	77	84	91	98	105	112	119	126	133	140	147	154	161	168	175	182	189	196	203	210	217	224	231	238	245	252	259	266	273	280	287	294	301	308	315	322	329	336	343	350	357	364	371	378	385	392	399	406	413	420	427	434	441	448	455	462	469	476	483	490	497	504	511	518	525	532	539	546	553	560	567	574	581	588	595	602	609	616	623	630	637	644	651	658	665	672	679	686	693	700	707	714	721	728	735	742	749	756	763	770	777	784	791	798	805	812	819	826	833	840	847	854	861	868	875	882	889	896	903	910	917	924	931	938	945	952	959	966	973	980	987	994	1001	1008	1015	1022	1029	1036	1043	1050	1057	1064	1071	1078	1085	1092	1099	1106	1113	1120	1127	1134	1141	1148	1155	1162	1169	1176	1183	1190	1197	1204	1211	1218	1225	1232	1239	1246	1253	1260	1267	1274	1281	1288	1295	1302	1309	1316	1323	1330	1337	1344	1351	1358	1365	1372	1379	1386	1393	1400	1407	1414	1421	1428	1435	1442	1449	1456	1463	1470	1477	1484	1491	1498	1505	1512	1519	1526	1533	1540	1547	1554	1561	1568	1575	1582	1589	1596	1603	1610	1617	1624	1631	1638	1645	1652	1659	1666	1673	1680	1687	1694	1701	1708	1715	1722	1729	1736	1743	1750	1757	1764	1771	1778	1785	1792	1799	1806	1813	1820	1827	1834	1841	1848	1855	1862	1869	1876	1883	1890	1897	1904	1911	1918	1925	1932	1939	1946	1953	1960	1967	1974	1981	1988	1995	2002	2009	2016	2023	2030	2037	2044	2051	2058	2065	2072	2079	2086	2093	2100	2107	2114	2121	2128	2135	2142	2149	2156	2163	2170	2177	2184	2191	2198	2205	2212	2219	2226	2233	2240	2247	2254	2261	2268	2275	2282	2289	2296	2303	2310	2317	2324	2331	2338	2345	2352	2359	2366	2373	2380	2387	2394	2401	2408	2415	2422	2429	2436	2443	2450	2457	2464	2471	2478	2485	2492	2499	2506	2513	2520	2527	2534	2541	2548	2555	2562	2569	2576	2583	2590	2597	2604	2611	2618	2625	2632	2639	2646	2653	2660	2667	2674	2681	2688	2695	2702	2709	2716	2723	2730	2737	2744	2751	2758	2765	2772	2779	2786	2793	2800	2807	2814	2821	2828	2835	2842	2849	2856	2863	2870	2877	2884	2891	2898	2905	2912	2919	2926	2933	2940	2947	2954	2961	2968	2975	2982	2989	2996	3003	3010	3017	3024	3031	3038	3045	3052	3059	3066	3073	3080	3087	3094	3101	3108	3115	3122	3129	3136	3143	3150	3157	3164	3171	3178	3185	3192	3199	3206	3213	3220	3227	3234	3241	3248	3255	3262	3269	3276	3283	3290	3297	3304	3311	3318	3325	3332	3339	3346	3353	3360	3367	3374	3381	3388	3395	3402	3409	3416	3423	3430	3437	3444	3451	3458	3465	3472	3479	3486	3493	3500	3507	3514	3521	3528	3535	3542	3549	3556	3563	3570	3577	3584	3591	3598	3605	3612	3619	3626	3633	3640	3647	3654	3661	3668	3675	3682	3689	3696	3703	3710	3717	3724	3731	3738	3745	3752	3759	3766	3773	3780	3787	3794	3801	3808	3815	3822	3829	3836	3843	3850	3857	3864	3871	3878	3885	3892	3899	3906	3913	3920	3927	3934	3941	3948	3955	3962	3969	3976	3983	3990	3997	4004	4011	4018	4025	4032	4039	4046	4053	4060	4067	4074	4081	4088	4095	4102	4109	4116	4123	4130	4137	4144	4151	4158	4165	4172	4179	4186	4193	4200	4207	4214	4221	4228	4235	4242	4249	4256	4263	4270	4277	4284	4291	4298	4305	4312	4319	4326	4333	4340	4347	4354	4361	4368	4375	4382	4389	4396	4403	4410	4417	4424	4431	4438	4445	4452	4459	4466	4473	4480	4487	4494	4501	4508	4515	4522	4529	4536	4543	4550	4557	4564	4571	4578	4585	4592	4599	4606	4613	4620	4627	4634	4641	4648	4655	4662	4669	4676	4683	4690	4697	4704	4711	4718	4725	4732	4739	4746	4753	4760	4767	4774	4781	4788	4795	4802	4809	4816	4823	4830	4837	4844	4851	4858	4865	4872	4879	4886	4893	4900	4907	4914	4921	4928	4935	4942	4949	4956	4963	4970	4977	4984	4991	4998	5005	5012	5019	5026	5033	5040	5047	5054	5061	5068	5075	5082	5089	5096	5103	5110	5117	5124	5131	5138	5145	5152	5159	5166	5173	5180	5187	5194	5201	5208	5215	5222	5229	5236	5243	5250	5257	5264	5271	5278	5285	5292	5299	5306	5313	5320	5327	5334	5341	5348	5355	5362	5369	5376	5383	5390	5397	5404	5411	5418	5425	5432	5439	5446	5453	5460	5467	5474	5481	5488	5495	5502	5509	5516	5523	5530	5537	5544	5551	5558	5565	5572	5579	5586	5593	5600	5607	5614	5621	5628	5635	5642	5649	5656	5663	5670	5677	5684	5691	5698	5705	5712	5719	5726	5733	5740	5747	5754	5761	5768	5775	5782	5789	5796	5803	5810	5817	5824	5831	5838	5845	5852	5859	5866	5873	5880	5887	5894	5901	5908	5915	5922	5929	5936	5943	5950	5957	5964	5971	5978	5985	5992	5999	6006	6013	6020	6027	6034	6041	6048	6055	6062	6069	6076	6083	6090	6097	6104	6111	6118	6125	6132	6139	6146	6153	6160	6167	6174	6181	6188	6195	6202	6209	6216	6223	6230	6237	6244	6251	6258	6265	6272	6279	6286	6293	6300	6307	6314	6321	6328	6335	6342	6349	6356	6363	6370	6377	6384	6391	6398	6405	6412	6419	6426	6433	6440	6447	6454	6461	6468	6475	6482	6489	6496	6503	6510	6517	6524	6531	6538	6545	6552	6559	6566	6573	6580	6587	6594	6601	6608	6615	6622	6629	6636	6643	6650	6657	6664	6671	6678	6685	6692	6699	6706	6713	6720	6727	6734	6741	6748	6755	6762	6769	6776	6783	6790	6797	6804	6811	6818	6825	6832	6839	6846	6853	6860	6867	6874	6881	6888	6895	6902	6909	6916	6923	6930	6937	6944	6951	6958	6965	6972	6979	6986	6993	7000	7007	7014	7021	7028	7035	7042	7049	7056	7063	7070	7077	7084	7091	7098	7105	7112	7119	7126	7133	7140	7147	7154	7161	7168	7175	7182	7189	7196	7203	7210	7217	7224	7231	7238	7245	7252	7259	7266	7273	7280	7287	7294	7301	7308	7315	7322	7329	7336	7343	7350	7357	7364	7371	7378	7385	7392	7399	7406	7413	7420	7427	7434	7441	7448	7455	7462	7469	7476	7483	7490	7497	7504	7511	7518	7525	7532	7539	7546	7553	7560	7567	7574	7581	7588	7595	7602	7609	7616	7623	7630	7637	7644	7651	

C, and triglycerides) for relatives (including children) with whom the patient feels close enough to share his/her health issues. For results monitoring, the laboratory may be asked to send a copy of lab results to the relative and his/her GP.

3.4.3. Phase 3. “EXTEND”

Promoting hypercholesterolemia screening in the family must be done whatever the final diagnosis. However, if an FH diagnosis is well established, it must be pursued with all the more stamina, especially in children. Such family screening must be promoted through the patient (“FH ambassador”), through the patient’s GP, and GPs (when identified) of relatives, and ideally with a dedicated nurse.

As first step for FH screening, the panel recommends assessment of routine lipids only, without genetic testing. Based on LDL-C, it is indeed possible to diagnose FH in adult relatives using the MEDPED criteria [24,25] or in children using specific diagnostic criteria [26]. The MEDPED criteria published by Roger William in 1993 (25) can readily be used in Belgium as the distribution of LDL-C level in general Belgian population (131 ± 34 mg/dl) [27] is almost identical to that of the general US population (130 ± 31.4 mg/dl). The diagnosis may be confirmed subsequently using genetic testing. Having non-elevated LDL-C does not necessarily rule out the transmission of pathogenic variants to the next generation, as incomplete penetrance of gene variants may (rarely) occur in FH [28]. In all cases, the FH specialist must be ready to respond to queries and requests for advice of screened relatives or to transfer relevant information to other colleagues if they live in a remote area.

4. Discussion

The aim of this consensus statement is to achieve a consistent management strategy for the identification of FH in patients undergoing acute CV events, for the provision of treatment and the organization of cascade screening in relatives of patients hospitalized for CVD in Belgian hospitals. Focusing on ACS, and given that each year about 10,000 ACS occur in Belgium and given that in the EUROASPIRE IV study it was estimated that 8% of adults hospitalized for ACS have clinical criteria compatible with potential undiagnosed FH [17], there is the hope that each year, there may be up to 800 new FH patients diagnosed in Belgium. More importantly, this will result in additional FH patients being diagnosed earlier assuming that cascade screening is adequately performed.

Currently, this strategy is being implemented in most coronary care units in Belgium. To achieve the successful implementation, a poster summarizing the strategy was created and distributed to all the coronary care units in Belgium at the end of 2017 (Fig. 3). Prior to this, face-to-face meetings with the cardiologists responsible for the CCU and their colleagues were organized to explain the rationale of the consensus strategy and the different procedures associated with it. We discussed with them the need to designate a well identified FH specialist, to whom all suspected patients can be referred for the validation study, we proposed to those specific centers better equipped with research coordinators to prospectively enter the data of all suspected patients as well as all other patients in order to collect more precise data on the prevalence of FH in the CCU and their clinical characteristics.

Conflicts of interest

Consensus Panel members (their department, their institution or personally) have received lecture honoraria, consultancy fees and/or research funding from Abbott (O.D.S., A.V., E.H.P., A.M., C.D.B., M.H.P.), Aegerion (O.D.S., A.M.), Akcea/Ionis (O.D.S., A.M.),

Amgen (O.D.S., A.V., M.L., A.L., E.H.P., I.E.C., M.G.R., A.M., S.C., E.R., J.L.B., M.H.P., C.W.), Astra Zeneca (O.D.S., A.V., M.C.J., W.D., A.L., E.H.P., A.M., A.D.M., C.B.R., C.D.B., S.C., M.H.P.), Bayer (A.B., A.D.M., C.B.R.), Boehringer Ingelheim (A.V., N.P., E.H.P., I.E.C., A.B., A.M., A.D.M., S.C., M.H.P.), Danone (O.D.S.), Daiichi Sankyo (A.D.M.), Eli Lilly (A.V., A.M., C.D.B.), Merck (O.D.S., A.V., I.E.C., M.G.R., A.M., E.R., M.H.P., C.W.), Mylan (A.V., M.H.P.), Novo Nordisk (N.P., M.H.P.), Pfizer (A.V., I.E.C.), Roche (M.L., P.V.), Sanofi-Aventis/Regeneron/Genzyme (O.D.S., A.V., N.P., A.L., E.H.P., I.E.C., A.B., M.G.R., A.M., C.D.B., S.C., E.R., J.L.B., F.C., M.H.P., C.W.), Servier (O.D.S., E.H.P., I.E.C., C.B.R., J.L.B.), Takeda (M.H.P.), Teva (O.S.D., E.R., M.H.P.).

Appendix A. Supplementary data

Supplementary data related to this article can be found at <https://doi.org/10.1016/j.atherosclerosis.2018.05.037>.

References

- [1] B.G. Nordestgaard, M.J. Chapman, S.E. Humphries, H.N. Ginsberg, L. Masana, O.S. Descamps, et al., European Atherosclerosis Society Consensus Panel. Familial hypercholesterolaemia is underdiagnosed and undertreated in the general population: guidance for clinicians to prevent coronary heart disease: consensus Statement of the European Atherosclerosis Society, *Eur. Heart J.* 34 (45) (2013) 3478–3490a.
- [2] O. Descamps, J.C. Hondekijn, P. Van Acker, J.P. Deslypere, F.R. Heller, High prevalence of a novel mutation in exon 4 in the LDL receptor gene in Belgium, *Clin. Genet.* 51 (1997) 301–308.
- [3] O.S. Descamps, J.P. Gilbeau, J.C. Hondekijn, X. Leysen, F. Van Leuven, F. Heller, Impact of genetic defects on atherosclerosis in patients suspected of familial hypercholesterolemia, *Eur. J. Clin. Invest.* 31 (11) (2001) 958–965.
- [4] O.S. Descamps, J.B. Gilbeau, R. Luwaert, F. Heller, Impact of Genetic Defects on coronary atherosclerosis in patients suspected of familial hypercholesterolemia, *Eur. J. Clin. Invest.* 33 (2003) 1–9.
- [5] O.S. Descamps, A. de Meester, P. Cheron, J.J. Kastelein, F.R. Heller, Clinical and preclinical myocardial ischaemia in familial hypercholesterolemia, *Atherosclerosis* (Supp 4) (2003) 7–8.
- [6] O.S. Descamps, S. Tenoutasse, X. Stephenne, I. Gies, V. Beauloye, et al., Management of familial hypercholesterolemia in children and young adults: consensus paper developed by a panel of lipidologists, cardiologists, paediatricians, nutritionists, gastroenterologists, general practitioners and a patient organization, *Atherosclerosis* 218 (2) (2011) 272–280.
- [7] L.F. Van Gaal, A.V. Peeters, C.E.M. De Block, R. Thiart, I.H. De Leeuw, M.J. Kotze, Low-density lipoprotein receptor gene mutation analysis and clinical correlation in Belgian hypercholesterolaemics, *Mol. Cell. Probes* 15 (2001) 329–336.
- [8] C. Sanna, X. Stéphane, N. Revencu, F. Smets, A. Sassolas, M. Di Filippo, O.S. Descamps, E.M. Sokal, Homozygous familial hypercholesterolemia in childhood: genotype-phenotype description, established therapies and perspectives, *Atherosclerosis* 247 (2016) 97–104.
- [9] A.J. Vallejo-Vaz, S.R. Kondapally Seshasai, D. Cole, G.K. Hovingh, J.J. Kastelein, et al., Familial hypercholesterolaemia: a global call to arms, *Atherosclerosis* 243 (1) (2015) 257–259.
- [10] G. De Backer, J. Besseling, J. Chapman, G.K. Hovingh, J.J. Kastelein, et al., EUROASPIRE Investigators. Prevalence and management of familial hypercholesterolaemia in coronary patients: an analysis of EUROASPIRE IV, a study of the European Society of Cardiology, *Atherosclerosis* 241 (1) (2015) 169–175.
- [11] J.G. Robinson, Management of familial hypercholesterolemia: a review of the recommendations from the national lipid association expert panel on familial hypercholesterolemia, *J. Manag. Care Pharm.* 19 (2) (2013) 139–149.
- [12] A.L. Catapano, I. Graham, G. De Backer, O. Wiklund, M.J. Chapman, et al., 2016 ESC/EAS guidelines for the management of dyslipidaemias: the task force for the management of dyslipidaemias of the european society of cardiology (ESC) and european atherosclerosis society (EAS) developed with the special contribution of the european association for cardiovascular prevention & rehabilitation (EACPR), *Atherosclerosis* 253 (2016) 281–344.
- [13] B.G. Nordestgaard, A. Langsted, S. Mora, G. Kolovou, H. Baum, et al., European atherosclerosis society (EAS) and the european federation of clinical chemistry and laboratory medicine (EFLM) joint consensus initiative. Fasting is not routinely required for determination of a lipid profile: clinical and laboratory implications including flagging at desirable concentration cutpoints—a joint consensus statement from the european atherosclerosis society and european federation of clinical chemistry and laboratory medicine, *Eur. Heart J.* 37 (25) (2016) 1944–1958.
- [14] R. Jackson, R. Scragg, R. Marshall, et al., Changes in serum lipid concentrations during first 24 hours after myocardial infarction, *BMJ* 294 (1987) 1588–1589.
- [15] N. Wattanasuwan, I.A. Khan, R.M. Gowda, B.C. Vasavada, T.J. Sacchi, Effect of acute myocardial infarction on cholesterol ratios, *Chest* 120 (4) (2001) 1196–1199.

- [16] K. Haralambos, S.D. Whatley, R. Edwards, R. Gingell, D. Townsend, et al., Clinical experience of scoring criteria for Familial Hypercholesterolaemia (FH) genetic testing in Wales, *Atherosclerosis* 240 (1) (2015) 190–196.
- [17] O.S. Descamps, J.C. Hondekijn, F. Van Leuven, F.R. Heller, The use of Achilles tendon ultrasonography for the diagnosis of familial hypercholesterolemia, *Atherosclerosis* 157 (2001) 514–518.
- [18] M. Harada-Shiba, H. Arai, T. Okamura, K. Yokote, S. Oikawa, A. Nohara, T. Okada, T. Ohta, H. Bujo, M. Watanabe, A. Wakatsuki, S. Yamashita, Multi-center study to determine the diagnosis criteria of heterozygous familial hypercholesterolemia in Japan, *J. Atherosclerosis Thromb.* 19 (11) (2012) 1019–1026.
- [19] U. Kassner, M. Marion Wühle-Demuth, I. Missala, S.E. Humphries, et al., Clinical utility gene card for: hyperlipoproteinemia, TYPE II, *Eur. J. Hum. Genet.* 2014 (7) (November 2013) 22, <https://doi.org/10.1038/ejhg.2013.271> published online 20.
- [20] J.J. Kastelein, H.N. Ginsberg, G. Langslet, G.K. Hovingh, R. Ceska, et al., ODYSSEY FH I and FH II: 78 week results with alirocumab treatment in 735 patients with heterozygous familial hypercholesterolaemia, *Eur. Heart J.* 36 (43) (2015) 2996–3003.
- [21] H.N. Ginsberg, D.J. Rader, F.J. Raal, J.R. Guyton, M.T. Baccara-Dinet, et al., Efficacy and safety of alirocumab in patients with heterozygous familial hypercholesterolemia and LDL-C of 160 mg/dl or higher, *Cardiovasc. Drugs Ther.* 30 (5) (2016) 473–483.
- [22] F.J. Raal, E.A. Stein, R. Dufour, T. Turner, F. Civeira, et al., RUTHERFORD-2 Investigators. PCSK9 inhibition with evolocumab (AMG 145) in heterozygous familial hypercholesterolaemia (RUTHERFORD-2): a randomised, double-blind, placebo-controlled trial, *Lancet* 385 (9965) (2015) 331–340.
- [23] I. Gouni-Berthold, O.S. Descamps, U. Fraass, E. Hartfield, K. Allcott, et al., Systematic review of published Phase 3 data on anti-PCSK9 monoclonal antibodies in patients with hypercholesterolaemia, *Br. J. Clin. Pharmacol.* 82 (6) (2016) 1412–1443.
- [24] B. Starr, S.G. Hadfield, B.A. Hutten, P.J. Lansberg, T.P. Leren, et al., Development of sensitive and specific age- and gender-specific low-density lipoprotein cholesterol cutoffs for diagnosis of first-degree relatives with familial hypercholesterolaemia in cascade testing, *Clin. Chem. Lab. Med.* 46 (6) (2008) 791–803.
- [25] R.R. Williams, S.C. Hunt, M.C. Schumacher, R.A. Hegele, M.F. Leppert, E.H. Ludwig, P.N. Hopkins, Diagnosing heterozygous familial hypercholesterolemia using new practical criteria validated by molecular genetics, *Am. J. Cardiol.* 72 (2) (1993) 171–176.
- [26] A. Wiegman, S.S. Gidding, G.F. Watts, M.J. Chapman, H.N. Ginsberg, et al., For the European Atherosclerosis Society Consensus Panel. Familial hypercholesterolaemia in children and adolescents: gaining decades of life by optimizing detection and treatment, *Eur. Heart J.* 36 (36) (2015) 2425–2437.
- [27] E.R. Rietzschel, M.L. De Buyzere, S. Bekaert, P. Segers, D. De Bacquer, L. Cooman, P. Van Damme, P. Cassiman, M. Langlois, P. van Oostveldt, P. Verdonck, G. De Backer, T.C. Gillebert, Asklepios Investigators. Rationale, design, methods and baseline characteristics of the Asklepios Study, *Eur. J. Cardiovasc. Prev. Rehabil.* 14 (2) (2007) 179–191.
- [28] A.V. Khera, H.H. Won, G.M. Peloso, K.S. Lawson, T.M. Bartz, et al., Diagnostic yield and clinical utility of sequencing familial hypercholesterolemia genes in patients with severe hypercholesterolemia, *J. Am. Coll. Cardiol.* 67 (22) (2016) 2578–2589.