

AgwA

Rue des Palais - Paleizenstraat 153 - 1030 Brussels - T +32 (0)2 244 44 30 - F +32 (0)2 244 44 31 - E info@agwa.be - www.agwa.be

1511 BELGIUM AMBASSY

New Belgium embassy in Beijing, China

<i>Client</i>	<i>Belgium, Ministry of Foreign Affairs</i>
<i>Budget</i>	<i>4.000.000€ excl. VAT</i>
<i>Year</i>	<i>2018</i>
<i>Team</i>	<i>AgwA + Geijan + Arch Harmony</i>
<i>Surface</i>	<i>2000 m2</i>
<i>Status</i>	<i>planning permission submit</i>



The new Belgian embassy in Beijing asks to run a fairly large program on a relatively small site. The program includes different levels of security and privacy (visitors, employees, diplomats as well as economic missions and events). The plot is long and narrow with the residence of the ambassador at the end. The programmatic and contextual conditions raise the question: how to organize a building that must be both open and closed?

This interpretation led to opting for a building with a plinth. This volume is mainly organized by closed boxes located in the corners which accommodates the serving spaces; At this location there are large beams that organize the different parts of the program (offices, multipurpose room, meeting rooms, rest room).

At the center of this pedestal, a patio offers breathing in the building. The mineralized base is composed of concrete beams with brick walls, with transparent materials in the middle allowing the opening and closing of the base. The floors are transparent with wooden windows with a program that requires more privacy and distancing.



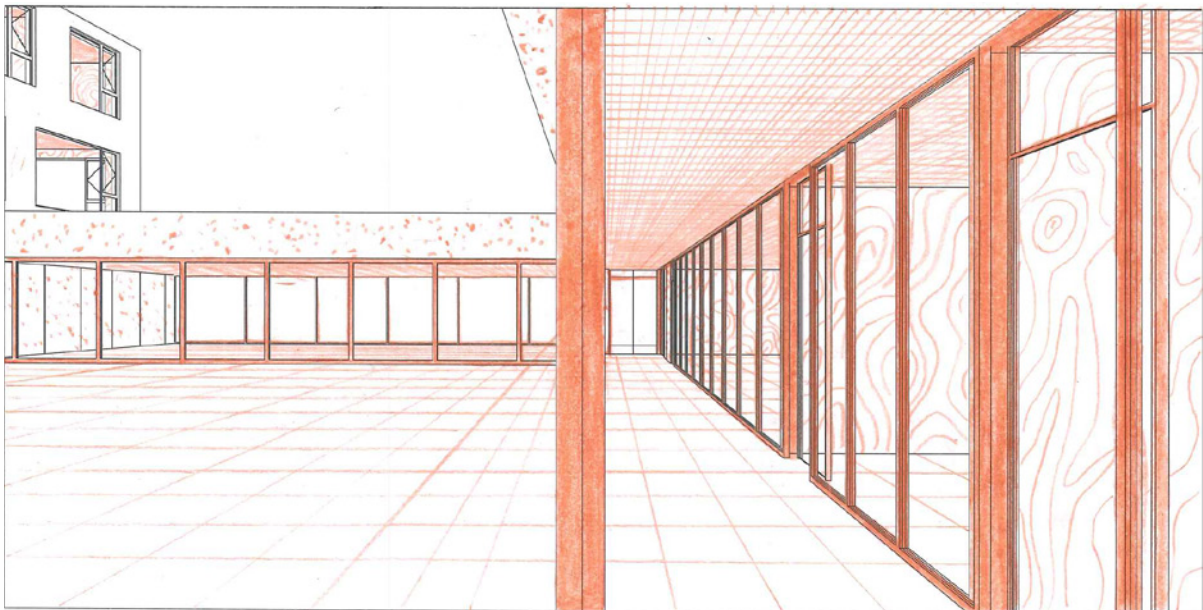
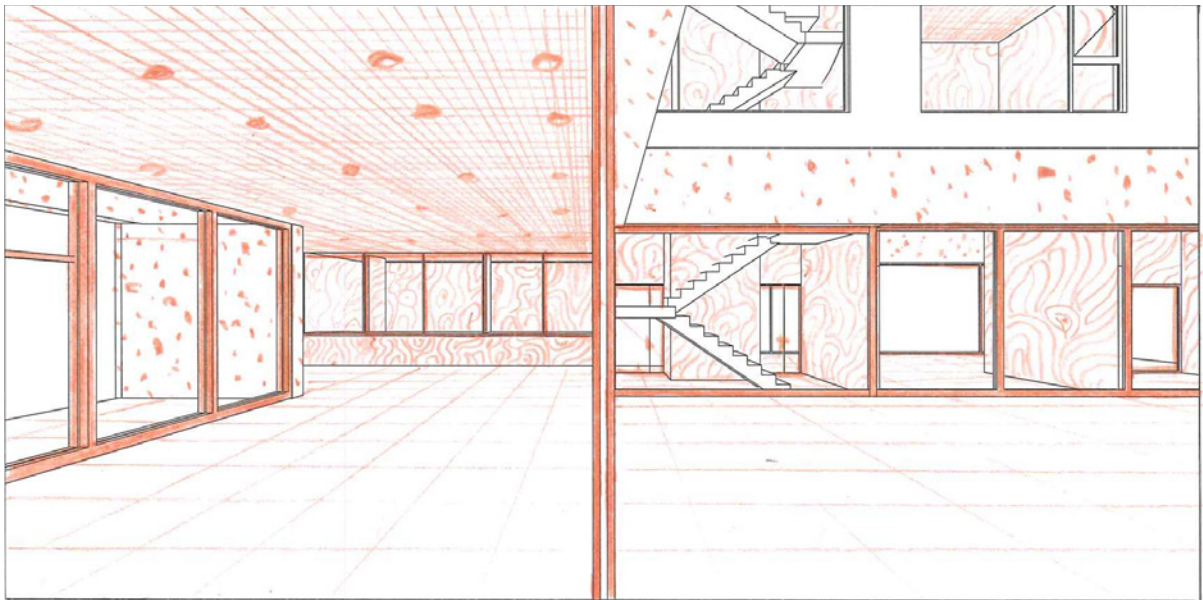
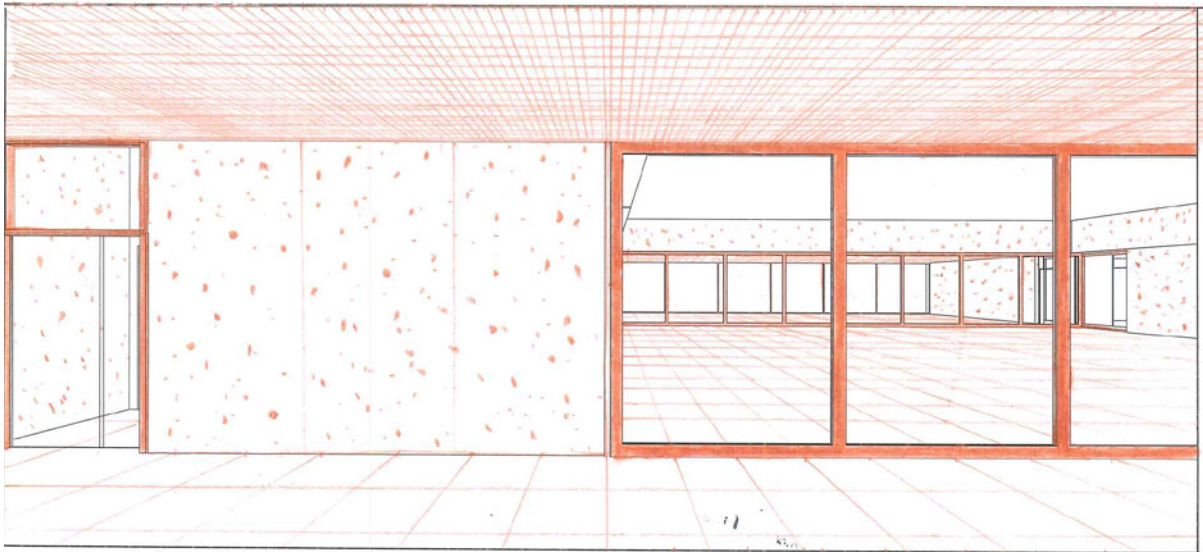
1511 AMBASSADE



ground floor



first and second floor



1511 AMBASSADE

