

SCIENTIFIC REPORTS



OPEN

'Artilysation' of endolysin λ Sa2lys strongly improves its enzymatic and antibacterial activity against streptococci

Received: 28 June 2016
Accepted: 23 September 2016
Published: 24 October 2016

Lorena Rodríguez-Rubio^{1,2,*}, Wai-Ling Chang^{3,*}, Diana Gutiérrez¹, Rob Lavigne², Beatriz Martínez¹, Ana Rodríguez¹, Sander K. Govers⁴, Abram Aertsen⁴, Christine Hirl³, Manfred Biebl³, Yves Briers⁵ & Pilar García¹

Endolysins constitute a promising class of antibacterials against Gram-positive bacteria. Recently, endolysins have been engineered with selected peptides to obtain a new generation of lytic proteins, Artilysins, with specific activity against Gram-negative bacteria. Here, we demonstrate that artilysation can also be used to enhance the antibacterial activity of endolysins against Gram-positive bacteria and to reduce the dependence on external conditions. Art-240, a chimeric protein of the anti-streptococcal endolysin λ Sa2lys and the polycationic peptide PCNP, shows a similar species specificity as the parental endolysin, but the bactericidal activity against streptococci increases and is less affected by elevated NaCl concentrations and pH variations. Time-kill experiments and time-lapse microscopy demonstrate that the killing rate of Art-240 is approximately two-fold higher compared to wildtype endolysin λ Sa2lys, with a reduction in viable bacteria of 3 log units after 10 min. In addition, lower doses of Art-240 are required to achieve the same bactericidal effect.

Endolysins are bacteriophage-encoded muralytic enzymes. They digest the peptidoglycan at the last stage of the lytic cycle, resulting in the release of newly formed virions from the infected host bacteria. Endolysin efficacy is of crucial importance for a successful bacteriophage multiplication cycle. Therefore, throughout evolution, bacteriophages have acquired highly efficient enzymes featured by high specificity¹ and a low probability of developing bacterial resistance²⁻⁴. Endolysins are composed by a single or multiple catalytic domains and in many of them a cell wall binding domain is present⁵. This feature has facilitated endolysin engineering to design new chimeric proteins with desired properties like altered specificity⁶ and enhanced lytic activity^{7,8}.

The finding that endolysins are able to attack Gram-positive bacteria and lyse them when added exogenously prompted their study as novel antimicrobial agents. Numerous *in vitro* and *in vivo* studies have shown the efficacy of endolysins to eliminate pathogenic bacteria from mucosal surfaces and systemic infections⁹. These characteristics, along with their efficacy against antibiotic-resistant bacteria, lack of toxicity and synergy with antibiotics makes them promising candidates to be exploited in the therapy of infectious diseases. In addition to clinical use, other applications of endolysins include their use in food safety, pathogen detection, disinfection, nanotechnology and vaccine development¹⁰.

Recently, endolysins have been engineered to overcome one of the main limitations in their use, i.e., their inefficacy against Gram-negative bacteria due to the presence of the outer membrane. Artilysins are optimized fusions of selected endolysins to specific outer membrane permeabilizing peptides, which promote transfer of the fusion protein across the outer membrane structure¹¹. Upon translocation, the peptidoglycan is degraded, causing a rapid cell death by osmotic lysis¹². Artilysins have been developed against Gram-negative pathogens

¹Instituto de Productos Lácteos de Asturias (IPLA-CSIC), Paseo Río Linares s/n 33300- Villaviciosa, Asturias, Spain.

²Laboratory of Gene Technology, Department of Biosystems, KU Leuven, Kasteelpark Arenberg 21 – box 2462, 3001 Heverlee, Belgium. ³Lisando GmbH, Am BioPark 13, 93053 Regensburg, Germany. ⁴Laboratory of Food Microbiology, Department of Microbial and Molecular Systems, KU Leuven, Heverlee, Belgium. ⁵Laboratory of Applied Biotechnology, Department of Applied Biosciences, Ghent University, Ghent Belgium. *These authors contributed equally to this work. Correspondence and requests for materials should be addressed to Y.B. (email: yves.briers@ugent.be) or P.G. (email: pgarcia@ipla.csic.es)

including *Pseudomonas aeruginosa* and *Acinetobacter baumannii* *in vitro* and *in vivo*, and have a low probability of resistance development similar to endolysins. They are highly bactericidal against multidrug-resistant isolates and persists and may therefore be useful in the treatment of human and animal chronic infections^{11,13,14}.

The endolysin λ Sa2lys from *Streptococcus agalactiae* prophage λ Sa2 has two catalytic domains showing γ -D-glutamyl-L-lysine endopeptidase and β -D-N-acetylglucosaminidase activity, respectively, and one cell wall binding domain (CBD), which comprises on its turn two Cpl-7 type subdomains¹⁵. This enzyme has lytic activity against *Streptococcus pyogenes*, *Streptococcus dysgalactiae*, *Streptococcus uberis*, *Streptococcus equi*, Group G *Streptococcus* and Group E *Streptococcus*¹⁶. Chimeric proteins derived from endolysin λ Sa2lys through fusion of the endopeptidase domain to staphylococcal cell wall binding domains from either lysostaphin or staphylococcal endolysin LysK are highly active against *Streptococcus agalactiae*, *S. uberis* and *Staphylococcus aureus*^{17,18}.

In this study, the ‘artilylation’ of an endolysin, i.e. the modification of an endolysin with a specific peptide with a dedicated function, was explored as a new approach to improve the muralytic and antibacterial properties of endolysins acting against Gram-positive bacteria. Contrary to Gram-negative targeting Artilysins, which comprise a peptide with an outer membrane permeabilizing function, the peptide in this novel Artilysin targeting a Gram-positive species is selected to improve cell wall affinity under a broader range of environmental conditions such as pH and ionic strength. As such, ‘artilylation’ does not only unlock the antibacterial potential of endolysins against Gram-negative species, but would also strengthen the antibacterial activity against Gram-positive species in a broader scope of applications. Here, we report on Art-240, a chimeric endolysin which is a fusion of the polycationic nonapeptide (PCNP) (composed of a mixture of arginine and lysine residues¹¹) to the C-terminus of λ Sa2lys. Analysis of Art-240 shows that artilylation generally improves both the muralytic and antibacterial properties of λ Sa2lys under a broad range of conditions.

Results

Art-240 has the same specificity as λ Sa2lys, but shows increased bactericidal activity. Both λ Sa2lys and Art-240 were purified to homogeneity by metal affinity chromatography, resulting in a total yield of 11.5 and 8.36 mg/l of *Escherichia coli* expression culture, respectively. Purity of proteins was evaluated by SDS-PAGE (>95%). Major protein bands with estimated molecular masses of about 50 kDa, correlating well to the predicted molecular masses for λ Sa2lys and Art-240 (50.8 and 53.4 kDa), were observed (Supplementary File 1A,B). Melting curves of both λ Sa2lys and Art-240 were determined by monitoring the loss of α -helicity by CD spectroscopy at 222 nm and show that the structural stability of λ Sa2lys is conserved after artilylation with melting temperatures of 61.1 °C and 63.9 °C, respectively (Supplementary File 1C).

The specificity of the antibacterial activity of Art-240 and endolysin λ Sa2lys was initially compared using a plate lysis assay against a collection of thirty-nine Gram-positive and five Gram-negative bacterial strains (Table 1). The activity spectrum is similar for both proteins at the highest concentration tested (5 μ M). Indeed, all streptococcal species tested (*S. agalactiae*, *S. dysgalactiae*, *S. pyogenes*, *S. uberis*, *S. suis*, *S. porcinus*, *S. gordonii*, *S. sanguinis*, and *S. viridans*) and one *Staphylococcus epidermidis* strain are sensitive, whereas other Gram-positive species such as *S. aureus* and *Enterococcus faecium* are not affected. Artilylation does not expand the lytic activity of endolysin λ Sa2lys to Gram-negative *P. aeruginosa*, *E. coli* and *Salmonella* strains. However, the antibacterial activity is clearly improved for the majority of sensitive strains in case of Art-240, as lower concentrations of the protein are required to observe a similar lysis spot (Supplementary File 2).

These observations were quantified using killing assays on a panel of 15 strains (four *S. agalactiae*, one *S. dysgalactiae*, one *S. pyogenes*, two *S. uberis*, two *S. suis*, one *S. viridans*, one *S. aureus*, one *E. faecium*, one *S. Typhimurium* and one *E. coli* O157:H7). Cell suspensions were treated with equimolar amounts (0.1 μ M) of both proteins and cell number reductions were analyzed after an exposure of 1 h at 25 °C. Artilylation notably increases the antibacterial activity against most of the tested strains, causing a reduction of bacterial viability by 0.5–1.5 log units higher than endolysin λ Sa2lys (Fig. 1). For instance, Art-240 reduced the cell number of *S. agalactiae* LiCC S461 by 2.78 ± 0.38 log units whereas a reduction of 1.56 ± 0.21 log units was detected after λ Sa2lys treatment ($P < 0.01$); a reduction of 2.83 ± 0.29 log units in cell number was observed for *S. pyogenes* LiCC S271 compared to 1.37 ± 0.06 log units after λ Sa2lys treatment ($P < 0.01$), and 2.43 ± 0.32 log units compared to 1.43 ± 0.21 log units in case of *S. uberis* LiCC S640 ($P < 0.01$). The effect of Art-240 and λ Sa2lys was similar on *S. aureus* LiCC S20 ($P > 0.05$). Notably, the bactericidal effect against *S. aureus* shows the higher sensitivity of the killing assay compared to the plate lysis assay where no inhibition of staphylococcal strains was observed. *E. faecium*, *S. Typhimurium* and *E. coli* species were not significantly affected by Art-240.

Art-240 has increased enzymatic activity over a broader pH range and a broader range of salt concentration. The muralytic activity of Art-240 against *S. uberis* and *S. agalactiae* was tested at different pH values and compared to the activity of the λ Sa2lys endolysin. Enzymatic activity of Art-240 against *S. agalactiae* LiCC S461 (Fig. 2) is higher than that of λ Sa2lys at all assayed pH values ($P < 0.01$; $P < 0.001$). Similar to endolysin λ Sa2lys, Art-240 shows an optimal activity at pH 7–8. When *S. uberis* LiCC S648 is used as substrate (Supplementary File 3), a similar outcome is observed, but with more pronounced differences for alkaline pH values. A >6-fold increase in enzymatic activity is observed for Art-240 at pH 9 ($P < 0.001$). Art-240 retains some activity at pH 10, contrary to λ Sa2lys. In summary, artilylation of λ Sa2lys improves the enzymatic activity in a broad pH range.

The effect of artilylation was evaluated with regard to salt tolerance for both *S. agalactiae* LiCC S461 (Fig. 3) and *S. uberis* LiCC S648 (Supplementary File 4). The enzymatic activity of Art-240 is significantly higher than the activity of λ Sa2lys over a broad range of NaCl concentrations for both *S. agalactiae* LiCC S461 ($P < 0.01$; $P < 0.001$) and *S. uberis* LiCC S648 ($P < 0.01$; $P < 0.001$). Although the enzymatic activity of Art-240 is also clearly affected by NaCl concentrations above 0.5 M (*S. agalactiae* LiCC S461) or 0.75 M (*S. uberis* LiCC S648), activity

Bacteria	Strain	LiCC Nr.	λSa2lys			Art-240			PNCP	Buffer
			5 μM	2 μM	1 μM	5 μM	2 μM	1 μM	10 μM	
Streptococcus										
<i>S. agalactiae</i>	B12-11.20.0190	S439	++	+	+/-	++	+	+/-	-	-
	vaOO413	S461	++	++	+	+++	+++	++	-	-
	va80306	S1047	++	++	+	+++	+++	+	-	-
	1560	S1046	+	+	+/-	++	+	+/-	-	-
<i>S. dysgalactiae</i>	B12-11.14.0245	S436	+++	++	++	+++	+++	++	-	-
<i>S. pyogenes</i>	DSMZ 11728	S271	++	++	++	+++	+++	+++	-	-
	3347	S328	+++	+++	+++	+++	+++	+++	-	-
	10651	S1049	+++	+++	+++	+++	+++	+++	-	-
<i>S. uberis</i>	C2638	S636	++	+	+	+++	++	+	-	-
	C2673	S637	+	+	+	++	++	++	-	-
	C2623	S639	+	+	+	++	+	+	-	-
	C2691	S640	+++	+++	++	+++	+++	++	-	-
	C2697	S641	++	+	+	+++	++	++	-	-
	C2746	S644	+++	++	++	+++	+++	++	-	-
	C2761	S646	+	+/-	-	++	+	+/-	-	-
	C2795	S648	+++	++	+	+++	+++	++	-	-
	C2811	S649	++	+	+/-	+++	++	+	-	-
	C2813	S650	+++	+++	++	+++	+++	+++	-	-
	C2818	S652	+++	+	-	+++	++	+	-	-
	C2819	S653	++	+	-	+++	++	+	-	-
	C2814	S654	+	+/-	-	++	+	+/-	-	-
<i>S. suis</i>	SN 16770	S772	+/-	-	-	+	+/-	-	-	-
	SN 19395	S774	+	+	+/-	++	+	+	-	-
	SN 19396	S775	++	+	+	++	++	+	-	-
	SN 20014	S777	+	+/-	+/-	++	+	+	-	-
	SN 23674	S778	+	+/-	+/-	+	+/-	+/-	-	-
	SN 26556	S779	+	-	-	+	+/-	-	-	-
	SN 29429	S780	+	+/-	-	++	+	+/-	-	-
<i>S. porcinus</i>	2231	S1048	+/-	+/-	-	+	+	+/-	-	-
	341/11/13	S848	+/-	-	-	+	+/-	-	-	-
<i>S. gordonii</i>	6365	S1050	+	+	+/-	++	+	+/-	-	-
<i>S. sanguinis</i>	10505	S1053	+	+	+/-	++	+	+/-	-	-
<i>S. viridans</i>	7351	S1054	++	++	+	+++	++	+/-	-	-
Staphylococcus										
<i>S. aureus</i>	DSMZ 346	S20	-	-	-	-	-	-	-	-
	DSMZ 20231	S21	-	-	-	-	-	-	-	-
	Sp10	S165	-	-	-	-	-	-	-	-
	Sp10res	S416	-	-	-	-	-	-	-	-
<i>S. epidermidis</i>	B12-11.20.0190	S440	+	+/-	-	++	+	+	-	-
Enterococcus										
<i>E. faecium</i>	NCIMB 11181	S526	-	-	-	-	-	-	-	-
Pseudomonas										
<i>P. aeruginosa</i>	PAO1p	S52	-	-	-	-	-	-	-	-
Escherichia										
<i>E. coli</i>	06-08410 (O103:H2)	S68	-	-	-	-	-	-	-	-
	03-07953 (O157:H7)	S72	-	-	-	-	-	-	-	-
Salmonella										
<i>S. Hadar</i>	LGL-107 (Group C2-C3)	S796	-	-	-	-	-	-	-	-
<i>S. Typhimurium</i>	LGL-57 (Group B)	S808	-	-	-	-	-	-	-	-

Table 1. Spectrum of activity for endolysin λSa2lys and Art-240. Plate lysis assay with thirty-three *Streptococcus* sp., five *Staphylococcus* sp. and one *Enterococcus faecium* bacterial strains as well as three Gram-negative bacterial strains (*E. coli*, *Pseudomonas aeruginosa*, *Salmonella* sp.). Lysis zones were analyzed in a semi-quantitative manner, with — corresponding to no visible lysis, and +/-, +, ++, +++ corresponding to an increasingly clear lysis determined in pairwise comparisons. Controls: buffer, PNCP peptide (10 μM spotted); Abbreviations: PCNP = polycationic nonapeptide. +++ very good, ++ good, + low, +/- detectable, — no activity.

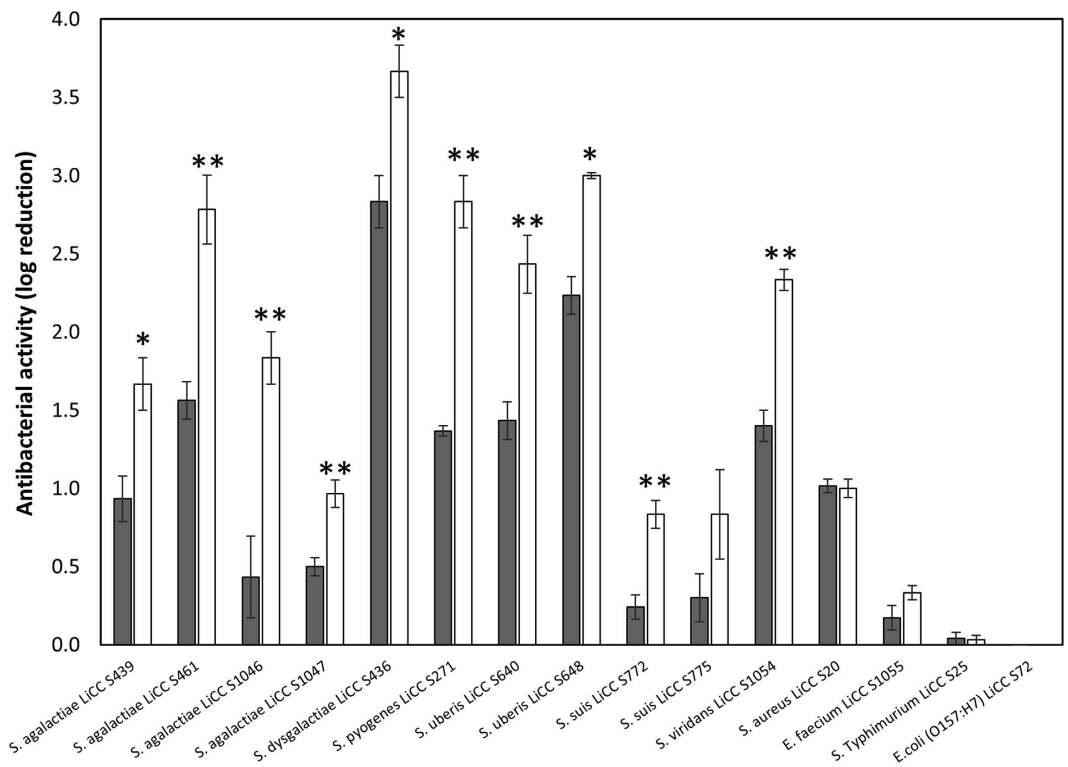


Figure 1. Bactericidal effects of endolysin λ Sa2lys and Art-240 against different bacterial species. A cell suspension of several streptococcal species, *S. aureus* LiCC S20, *E. faecium* LiCC S1055 *Salmonella* Typhimurium LiCC LiCC S25 and *E. coli* (O157:H7) LiCC S72 were treated with equimolar amounts (0.1 μ M) of λ Sa2lys (grey) endolysin and Art-240 (white). Bacterial reduction after 1 h is expressed in log units relative to the untreated control. Data reported are means \pm standard deviations of three replicates. Student *t*-test was performed to compare the bactericidal activity of λ Sa2lys and Art-240. **P* < 0.05; ***P* < 0.01.

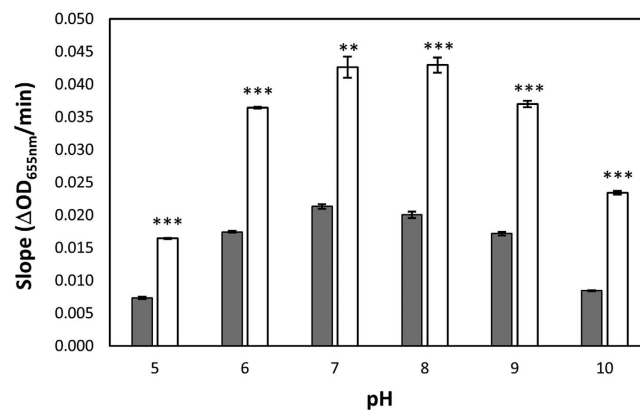


Figure 2. Effect of pH on the enzymatic activity of endolysin λ Sa2lys and Art-240. The enzymatic activities were determined using a turbidity reduction assay with equimolar amounts (0.1 μ M) of λ Sa2lys (grey) and Art-240 (white), and reported as the slopes derived from 60-min curves from *S. agalactiae* LiCC S461 in the exponential phase performed under various pH conditions. Data are means \pm standard deviations of three replicates. Student *t*-test was performed to compare the activity of λ Sa2lys and Art-240 within each pH value. ***P* < 0.01; ****P* < 0.001.

could be detected at high salt conditions up to 5 M NaCl. Artilylation with a polycationic peptide leads thus to increased enzymatic activity under a broad range of NaCl concentrations.

Art-240 is enzymatically active against both exponential and stationary bacterial cells. To analyze the influence of the growth stage on the susceptibility to Art-240, turbidity reduction assays using 0.1 μ M of both proteins (Art-240 and endolysin λ Sa2lys) have been performed. *S. agalactiae* LiCC S461 cells collected

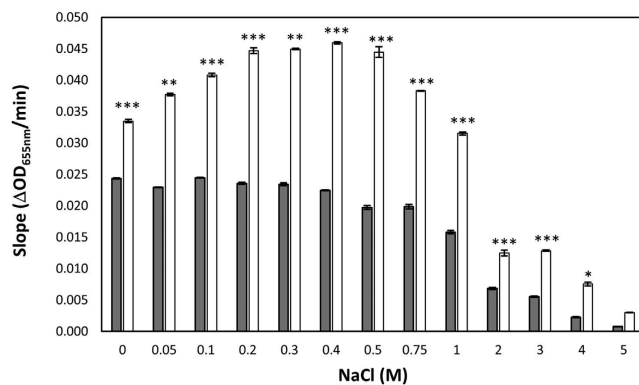


Figure 3. Effect of NaCl on the enzymatic activity of endolysin λ Sa2lys and Art-240. The enzymatic activities were determined by using a turbidity reduction assay using equimolar amounts ($0.1 \mu\text{M}$) of λ Sa2lys (dark) and Art-240 (white), and reported as the slopes derived from a 60-min curves from *S. agalactiae* LiCC S461 in the exponential phase performed under various sodium chloride (NaCl) conditions. Data are means \pm standard deviations of three replicates. Student *t*-test was performed to compare the activity of λ Sa2lys and Art-240 within each NaCl concentration. ** $P < 0.01$; *** $P < 0.001$.

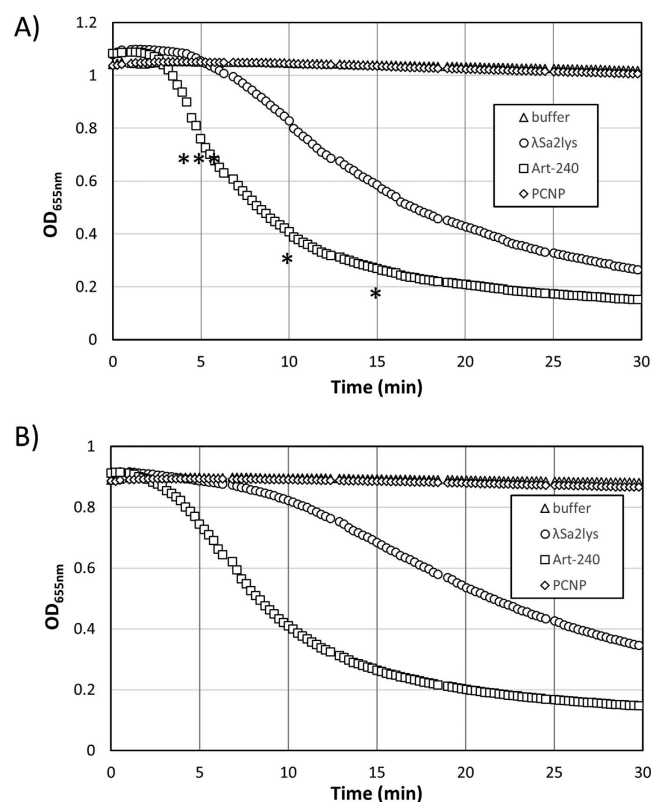


Figure 4. Activity of endolysin λ Sa2lys and Art-240 on both exponential and stationary *S. agalactiae* LiCC S461. Turbidity reduction assay with equimolar amounts ($0.1 \mu\text{M}$) of λ Sa2lys and Art-240 are shown for both mid-exponential phase (A) and stationary phase (B) *S. agalactiae* LiCC S461 cells. Data are means \pm standard deviations of three independent experiments. Student *t*-test was performed to compare the activity of λ Sa2lys and Art-240 within each growth phase. * $P < 0.05$; *** $P < 0.001$.

during exponential (Fig. 4A) and stationary (Fig. 4B) growth phase are both susceptible to Art-240 with an enzymatic activity of 121 ± 16 and 84 ± 27 units, respectively. Similarly, endolysin λ Sa2lys is also active against cells in both growth stages but with reduced activities (61 ± 13 and 30 ± 4 units against exponential and stationary cells, respectively). Significant differences could be observed between Art-240 and endolysin λ Sa2lys activities on exponential cells after 5, 10 and 15 min of treatment ($P < 0.05$; $P < 0.001$). The polycationic nonapeptide (PCNP) alone or the buffer alone do not lyse cells in both phases. Stationary phase cells are thus less susceptible for λ Sa2lys and Art-240, but the reduced activity of Art-240 against stationary phase cells remains similar compared

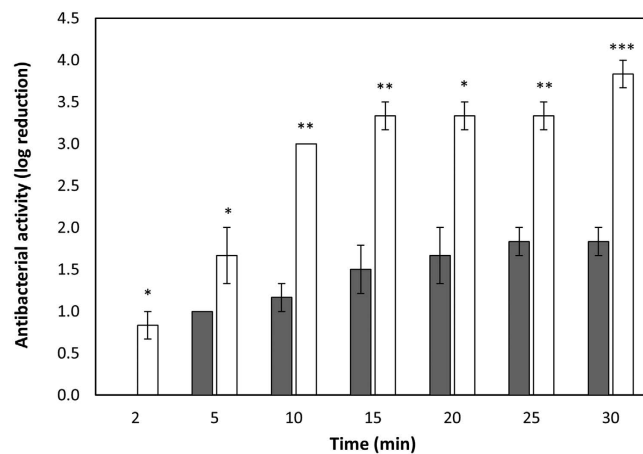


Figure 5. Rapid mode of action of Art-240. Time-kill experiment of *S. agalactiae* LiCC S461 treated with 0.1 μ M Art-240 (white) and endolysin λ Sa2lys (grey) at pH 7.4. Results (means \pm standard deviations of three replicates) are reported as bacterial reduction (\log_{10} units) relative to the untreated control. Student *t*-test was performed to compare the activity of λ Sa2lys and Art-240. * $P < 0.05$; ** $P < 0.01$; *** $P < 0.001$.

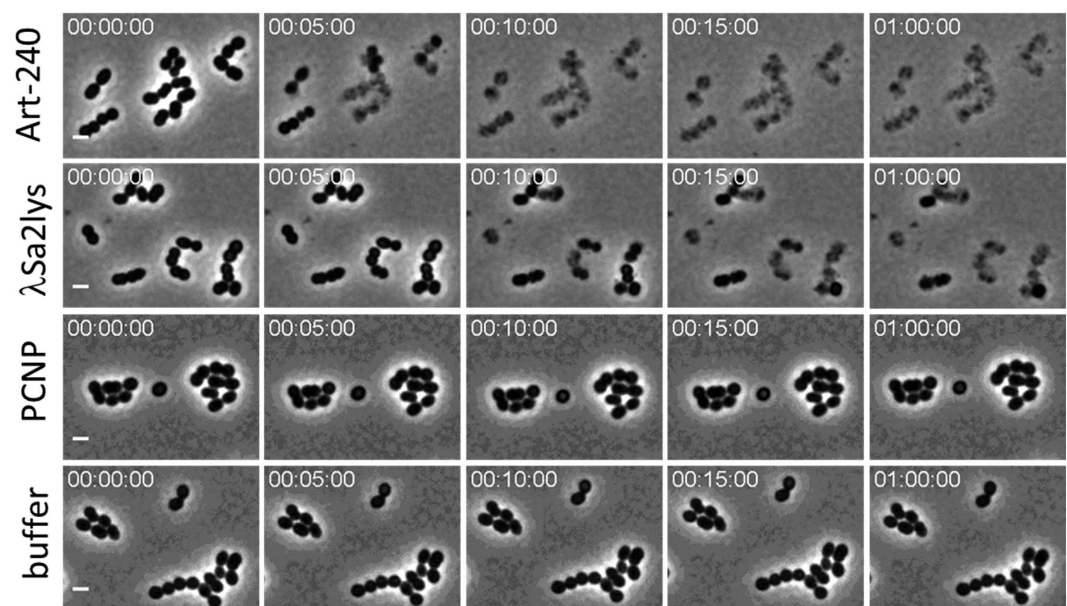


Figure 6. Real-time time lapse series of *S. uberis* LiCC S648 exposed to equimolar amounts (0.1 μ M) of Art-240, λ Sa2lys, PCNP and buffer. Exponentially growing cells were washed three times with buffer and subsequently mixed (1:1) with 0.2 μ M of the corresponding enzyme/peptide. The mixture was dropped on agarose pads and cells were monitored over 1 h in real-time (Supplementary Movie S1). Five minute intervals are shown for each condition during the first 15 minutes and after 1 h. Scale bar = 2 μ m.

to the enzymatic activity of λ Sa2lys against exponential phase cells. Artilysation of λ Sa2lys thus compensates the reduction in activity which is intrinsically related to stationary phase cells.

Art-240 kills bacteria faster than its parental endolysin λ Sa2lys. To quantify the killing rate of Art-240 time-kill experiments were performed using *S. agalactiae* LiCC S461 cultures treated with 0.1 μ M of each lytic protein at the optimal pH (pH 7) (Fig. 5). Art-240 acts more rapidly than λ Sa2lys. Art-240 causes a reduction in cell number of 1.7 ± 0.3 log units after 5 min ($P < 0.05$), whereas λ Sa2lys needs 30 minutes to cause a similar reduction in cell number (1.8 ± 0.1 log units). The rapid onset of action by Art-240 is also evidenced after 2 min of incubation ($P < 0.05$) with a reduction in the viable bacterial count (one log unit) while no activity of the endolysin λ Sa2lys is detected after this short exposure time. In addition, the extent of killing is significantly greater in case of Art-240 with a reduction of 3.8 ± 0.2 log units after 30 min. This represents a twofold increase compared to λ Sa2lys at the same time point ($P < 0.001$). The experiment was repeated under identical conditions, but now time-dependent killing was monitored using time-lapse microscopy (Fig. 6, Movie S1). While both λ Sa2lys and

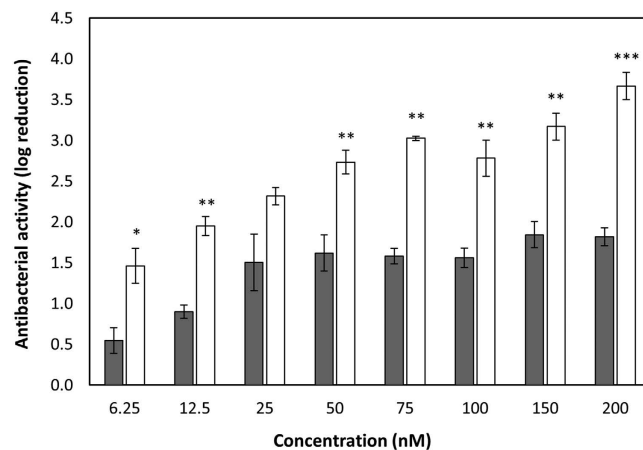


Figure 7. Art-240 kills *S. agalactiae* LiCC S461 in a rapid and efficient way. A cell suspension at pH 7.4 was treated with increasing amounts of λ Sa2lys (grey) and Art-240 (white). Antibacterial activity was reported as bacterial reduction (\log_{10} units) relative to the untreated control after 1 h of treatment. Data are means \pm standard deviations of three replicates. Student *t*-test was performed to compare the activity of λ Sa2lys and Art-240. * $P < 0.05$; ** $P < 0.01$.

Art-240 induce osmotic lysis of bacterial cells, the more rapid killing of Art-240 is clearly visualized and a more complete lysis is achieved in comparison to the λ Sa2lys endolysin. Controls (PCNP or buffer alone) do not visibly affect the structural integrity.

Lower doses of Art-240 are required to achieve a similar bactericidal effect against *S. agalactiae* LiCC S461 compared to λ Sa2lys.

A dose-response curve from 6.25 nM to 200 nM of Art-240 was determined at pH 7. The bactericidal effect was quantified after 1 h of incubation for the different doses and compared to those obtained after endolysin λ Sa2lys exposure (Fig. 7). The antibacterial activity of Art-240 outcompetes the λ Sa2lys antibacterial activity, which is most outspoken at low concentrations ($P < 0.05$). To achieve the same bactericidal effect, a 4 to 12-fold higher dose of λ Sa2lys is needed. E.g., a reduction of about 2 log units is observed for 12.5 nM Art-240, while 150 nM λ Sa2lys is needed to cause the same reduction. Moreover, an increase in λ Sa2lys concentration over 50 nM does not further improve the antibacterial activity but a higher reduction in bacterial counts ($P < 0.01$; $P < 0.001$) is achieved with Art-240 (Fig. 7). In conclusion, Art-240 is more effective and requires smaller doses than the endolysin to achieve a comparable bactericidal effect.

Discussion

Artilyns represent a new class of engineered endolysins with high antibacterial activity against Gram-negative bacteria. The design of these enzymes implies the fusion of a selected outer membrane permeabilizing peptide to a specific endolysin. The cationic or amphipathic peptide moiety destabilizes the lipopolysaccharide (LPS) layer of the outer membrane by interfering with the ionic interactions between divalent cations and LPS phosphate groups and the hydrophobic forces between the fatty acids of lipid A that stabilize the outer membrane structure¹². The peptidoglycan layer becomes accessible to the endolysin moiety, resulting in peptidoglycan degradation and cell death by osmotic lysis. Here, we have shown that the process of artilylation, i.e. modifying the properties of an endolysin by fusion with a specific peptide, represents a novel approach to improve the enzymatic and antibacterial properties of an endolysin active against Gram-positive bacteria. For Art-240 we made use of the polycationic nonapeptide (PCNP) which was previously successfully used in the construction of Artilyns against Gram-negative *P. aeruginosa*. The rationally designed Art-240 outperforms λ Sa2lys, the endolysin from which it is derived, in (i) an increased enzymatic activity under a broad range of pH and NaCl conditions, (ii) a higher overall bactericidal effect, (iii) a faster and more complete lysis/killing and (iv) the requirement of reduced doses. At the same time, the good protein stability of λ Sa2lys, its high specificity for streptococci and activity against stationary cells is conserved after artilylation.

Generally, endolysins are specific to a species (or genus) of bacteria naturally infected by the phages that encode them¹⁹. In good agreement with this, λ Sa2lys shows high activity against different species of *Streptococcus* and low activity against *S. epidermidis*¹⁶. Table 1 shows a similar specificity for Art-240, demonstrating that the PCNP did not extend the spectrum to other Gram-positive microorganisms, such as *E. faecium*, or Gram-negative bacteria. Indeed, the fusion of PCNP to endolysin λ Sa2lys may allow transport of Art-240 through the outer membrane of Gram-negative bacteria as has been shown before for other engineered endolysins¹¹ but if this were to happen, the transfer appears not to be sufficient to lyse them. This was likely because of the different peptidoglycan chemotype between Gram-negative bacteria (A1 γ) and streptococci (A3 α)²⁰. Indeed, the specificity of endolysins is due to the cell wall binding and/or the catalytic domains. λ Sa2lys harbors apart from two catalytic domains (a glucosaminidase and endopeptidase domain) a cell wall binding domain (CBD) that comprises two Cpl-7 subdomains¹⁵. Typically, CBDs of endolysins show a high affinity and specificity for their targets with low affinity constants^{21,22}. Changes in the activity spectrum of the endolysin λ Sa2lys were previously

enzyme sites for sub-cloning into pET21b. The PCR product was gel purified, digested with NdeI and XhoI, purified using QIAquick PCR Purification Kit (QIAGEN GmbH, Germany) and introduced into similarly digested, dephosphorylated, and gel-purified pET21b via conventional means. Expression from the resultant pET21b/ λ Sa2lys construct results in the addition of eight amino acid residues to the C-terminus of λ Sa2lys (corresponding to the XhoI site (Leu-Glu) followed by six His residues). The coding sequence for Art-240 was constructed by fusing the sequence encoding the polycationic nonapeptide (PCNP)¹¹ to the 3' end of the open reading frame of λ Sa2lys endolysin using a two-step standard PCR cloning method with PCR primer pairs: λ Sa2lysNdeIFw and λ Sa-His₆AflII-P-XhoIRv-1 in a first PCR and λ Sa2lysNdeIFw and His6AflII-P-XhoIRv-2 in a second PCR using the product of the first PCR as a template (Table 2). The PCR amplified fragment (encoding Art-240) comprises subsequently the coding sequence for λ Sa2lys, a His₆-tag for affinity purification, a unique AflII restriction site for flexible construction of different PCNP-based constructs and the PCNP-tag. The resulting λ Sa2lys-His₆-AflII-PCNP encoding cassette was then introduced to modified pET21b, in which the C-terminal His₆-tag was removed, via Quick Change mutagenesis (Q5 site-directed mutagenesis kit; New England BioLabs, GmbH) by introduction of two stop codons after the XhoI restriction endonuclease site. An internal His₆-tag was preferred to ensure a free terminal PCNP.

Recombinant expression and purification. The recombinant expression of both λ Sa2lys and Art-240 was performed in 2 liters lysogeny broth (LB) in *E. coli* BL21(DE3)pLysS and *E. coli* BL21(DE3) cells, respectively. Briefly, a preculture (50 ml LB in 100 ml flask inoculated from fresh plate) was grown overnight at 37 °C. The cells were inoculated into fresh medium at an optical density of OD₆₀₀ = 0.1 and grown at 37 °C to an optical density of OD₆₀₀ = 0.45–0.55. Next, the expression of the proteins was induced with 1 mM isopropyl- β -d-thiogalactopyranoside (IPTG) at 16 °C for 18 h. *E. coli* cells were harvested by centrifugation (6,000 \times g for 5 min at 4 °C), and the obtained cell pellet was resuspended in 40 ml of lysis buffer (20 mM HEPES, 1 M NaCl, 20 mM imidazole and 1 mM MgCl₂ [pH 7.4] supplemented with 25 μ g/ml DNaseI). Cell disruption was done by sonication (Bandelin Sonopuls HD3200) under the following conditions: 45% maximum amplitude (51 watts) for 6 min with 10-s pulse/20-s break steps on ice. Cell debris was separated by centrifugation at 15,000 \times g for 20 min, and the supernatant was then filtered (Filtropur S 0.2, PES-membrane, 0.2 μ m pore size; Sarstedt AG & Co., Germany) before application to the column. Purification of the His₆-tagged fusion proteins was performed on an AKTÄ fast protein liquid chromatography (FPLC) system (GE Healthcare, Little Chalfont, United Kingdom) controlled by UNICORN 5.1 software with Ni²⁺-charged immobilized-metal affinity chromatography (IMAC) columns (1 ml HiPrep IMAC FF; GE Healthcare). Bound proteins were washed using buffer A (20 mM HEPES, 1 M NaCl, 20 mM imidazole [pH 7.4]) and eluted with a linear gradient to 100% buffer B (20 mM HEPES, 500 mM NaCl, 500 mM imidazole [pH 7.4]). The fractions containing the purified λ Sa2lys endolysin or Art-240 were pooled and dialysed against buffer C (20 mM HEPES, 500 mM NaCl [pH 7.4]). After dialysis, the protein concentration was determined spectrophotometrically in silica cuvettes at a wavelength of 280 nm (Jasco V-650; Jasco Corporation, Tokyo, Japan).

CD spectroscopy. To measure the melting temperature (T_m), the ellipticity of the proteins was recorded at 220 nm in a Jasco model J-815 circular dichroism (CD) spectrometer (Jasco Corporation). The protein melting temperatures were determined with a heating rate of 1 °C/min, an incubation time of 3 s, and a volume of 410 μ l in a 1-mm light path Hellma quartz cuvette. All measurements were performed in 50 mM sodium phosphate buffer with 300 mM NaCl at pH 7.4. The midpoint of the unfolding transition was determined by fitting to a sigmoid unfolding model using JASCO analysis software. The proteins were measured at concentrations of 6.03 μ M (λ Sa2lys endolysin) and 6.00 μ M (Art-240).

Muralytic assay. A standardized turbidity assay modified from Donovan *et al.*⁶ with *S. agalactiae* LiCC S461 as substrate was used. Briefly, *S. agalactiae* LiCC S461 cells in the mid-exponential phase (OD₆₀₀ = 0.6) and stationary phase (OD₆₀₀ = 1.2) were harvested by centrifugation (3,900 \times g, 10 min, 4 °C) and stored on ice for \leq 4 h until just before the assay. The cell pellets were suspended in 20 mM HEPES, 150 mM NaCl (pH 7.4) to an OD₆₀₀ = ~1.2. In the experiment to study the effect of different pH values on the enzymatic activity of λ Sa2lys and Art-240, a universal buffer (150 mM KCl, 10 mM KH₂PO₄, 10 mM sodium citrate, 10 mM H₃BO₃) with different pH values between 4 and 10 was used in order to exclude any possible effect of the used buffer compound. Upon addition of 30 μ l of muralytic enzymes (1 μ M) to 270 μ l of bacterial cells (final protein concentration 0.1 μ M), the optical density was measured spectrophotometrically over time at 655 nm using a Microplate Reader 680 system (Bio-Rad). The standardized calculation method previously described³⁰ was used to quantify the muralytic activity of the enzymes with one unit corresponding to a decrease in optical density of 0.001/min.

Antibacterial activity. Bacterial cells at the mid-exponential growth phase (OD₆₀₀ = 0.6) were harvested by centrifugation (16,000 \times g for 5 min), washed, and diluted 100-fold in 20 mM HEPES 150 mM NaCl (pH 7.4) to a final density of \pm 10⁷ CFU/ml. Fifty μ l of a protein solution containing 0.2 μ M λ Sa2lys endolysin/Art-240 (or to the indicated concentration) in 20 mM HEPES, 150 mM NaCl (pH 7.4) was added to 50 μ l of the bacterial cell dilution and further incubated at 25 °C, with shaking. After 60-min incubation, the reaction was stopped by addition of 0.15 μ g Proteinase K and the appropriate dilutions of the cell suspensions were plated on BHI or LB agar in triplicate. Colonies were counted after overnight incubation at 37 °C. The antibacterial activity was quantified as the relative inactivation in log units ($\log_{10}[N_0/N_i]$) with N_0 as the initial number of untreated cells and N_i as the number of residual cells counted after treatment).

Time-kill curve. Mid-exponentially growing cells (OD₆₀₀ = 0.6) of *S. agalactiae* LiCC S461 in BHI medium were harvested by centrifugation (16,000 \times g for 5 min), washed twice with 1 ml 20 mM HEPES, 150 mM NaCl

(pH 7.4), and resuspended in 1 ml 20 mM HEPES, 150 mM NaCl (pH 7.4) to a final density of $\pm 10^7$ CFU/ml. A suspension with a total volume of 1 ml containing 950 μ l of the bacterial cell dilution, and 50 μ l λ Sa2lys endolysin/Art-240 in 20 mM HEPES, 500 mM NaCl (pH 7.4) (final concentration 0.1 μ M) was prepared. These mixtures were incubated at 25 °C in a shaker for the times indicated. At the respective time points, 50 μ l was taken, the reaction was stopped with 0.15 μ g Proteinase K, and appropriate dilutions of the cell suspensions were plated on BHI agar in triplicate. Colonies were counted after overnight incubation at 37 °C. The antibacterial activity was quantified as indicated above.

Plate lysis assay. Purified λ Sa2lys/Art-240 were diluted in sterile 20 mM HEPES, 500 mM NaCl (pH 7.4) buffer, and 5 μ l from a stock solution of 5 μ M (1.25 μ g), 2 μ M (0.5 μ g) and 1 μ M (0.25 μ g) was spotted onto BHI or LB agar plate overlaid with 3 ml 0.75% BHI or LB soft agar containing 100 μ l the target bacteria from an overnight culture. The spotted plates were air dried for 10 min under a laminar flow hood and incubated overnight in a 37 °C environment. Semi-quantitative scoring of the cleared spots occurred after 24 h of plating the cells.

Time-lapse microscopy. Exponentially growing *S. uberis* LiCC S648 cells (37 °C, BHI, OD_{600nm} = 0.6) were washed three times in 20 mM HEPES, 500 mM NaCl pH 7.4 and concentrated five times in the same buffer. Equimolar amounts of Art-240, λ Sa2lys and the PCNP (0.2 μ M) in 20 mM HEPES, 500 mM NaCl pH 7.4 were mixed in a 1:1 ratio with the cell suspension (final concentration of compounds is 0.1 μ M), and the mixture was immediately transferred to an agarose pad (2% dissolved in 20 mM HEPES, 500 mM NaCl [pH 7.4]) for imaging. A buffer control (20 mM HEPES, 500 mM NaCl [pH 7.4]) was included. Time-lapse microscopy experiments were performed with a temperature controlled (Okolab, Ottaviano, Italy) Eclipse Ti-E inverted microscope (Nikon, Champigny-sur-Marne, France) equipped with a Ti-CT-E motorized condenser and a CoolSNAP HQ2 FireWire CCD camera, as described previously³¹. Images were acquired using NIS-Elements (Nikon), and the resulting pictures were further handled with open-source software, ImageJ (<http://rsbweb.nih.gov/ij/>).

Statistical analyses. The one-tailed Student *t*-test was used to compare the antibacterial activity of λ Sa2lys and Art-240 (expressed as log viable reduction) against a panel of strains. The same test was used to compare the effect of pH and NaCl on the enzymatic activity of both proteins against exponential cultures of *S. agalactiae* LiCC S461 and *S. uberis* LiCC S648, as well as their activity against exponential and stationary cultures of *S. agalactiae* LiCC S461 (expressed as the slope of the killing curves). The killing effect of the enzymes over time (0–30 min) and at different concentrations (6.25–200 nM) against *S. agalactiae* LiCC S461 suspensions at pH 7.4 were also compared (expressed as log viable reduction). Results are shown as means \pm standard deviations. A *P* value below 0.05 was considered statistically significant.

References

- Loessner, M. J. Bacteriophage endolysins—current state of research and applications. *Current opinion in microbiology* **8**, 480–487 (2005).
- Schuch, R., Nelson, D. & Fischetti, V. A. A bacteriolytic agent that detects and kills *Bacillus anthracis*. *Nature* **418**, 884–889 (2002).
- Pastagia, M. *et al.* A Novel Chimeric Lysin Shows Superiority to Mupirocin for Skin Decolonization of Methicillin-Resistant and -Sensitive *Staphylococcus aureus* Strains. *Antimicrobial agents and chemotherapy* **55** (2011).
- Rodriguez-Rubio, L. *et al.* The phage lytic proteins from the *Staphylococcus aureus* bacteriophage vB_SauS-phiIPLA88 display multiple active catalytic domains and do not trigger staphylococcal resistance. *PLoS one* **8**, e64671 (2013).
- Garcia, E. *et al.* Molecular Evolution of Lytic Enzymes of Streptococcus-Pneumoniae and Its Bacteriophages. *Proceedings of the National Academy of Sciences of the United States of America* **85**, 914–918 (1988).
- Donovan, D. M. *et al.* Peptidoglycan hydrolase fusions maintain their parental specificities. *Applied and environmental microbiology* **72**, 2988–2996 (2006).
- Becker, S. C. *et al.* LysK CHAP endopeptidase domain is required for lysis of live staphylococcal cells. *FEMS microbiology letters* **294**, 52–60 (2009).
- Schmelcher, M., Tchang, V. S. & Loessner, M. J. Domain shuffling and module engineering of *Listeria* phage endolysins for enhanced lytic activity and binding affinity. *Microb Biotechnol* **4**, 651–662 (2011).
- Roach, D. R. & Donovan, D. M. Antimicrobial bacteriophage-derived proteins and therapeutic applications. *Bacteriophage* **5**, e1062590 (2015).
- Rodriguez-Rubio, L. *et al.* Phage lytic proteins: biotechnological applications beyond clinical antimicrobials. *Critical reviews in biotechnology* **36**, 542–552 (2016).
- Briers, Y. *et al.* Engineered endolysin-based “Artilyns” to combat multidrug-resistant gram-negative pathogens. *mBio* **5**, e01379–01314 (2014).
- Briers, Y. & Lavigne, R. Breaking barriers: expansion of the use of endolysins as novel antibacterials against Gram-negative bacteria. *Future microbiology* **10**, 377–390 (2015).
- Briers, Y. *et al.* Art-175 is a highly efficient antibacterial against multidrug-resistant strains and persisters of *Pseudomonas aeruginosa*. *Antimicrobial agents and chemotherapy* **58**, 3774–3784 (2014).
- Defraigne, V. *et al.* Efficacy of Artilyns Art-175 against Resistant and Persistent *Acinetobacter baumannii*. *Antimicrobial agents and chemotherapy* **60**, 3480–3488 (2016).
- Pritchard, D. G., Dong, S., Kirk, M. C., Cartee, R. T. & Baker, J. R. LambdaSa1 and LambdaSa2 prophage lysins of *Streptococcus agalactiae*. *Applied and environmental microbiology* **73**, 7150–7154 (2007).
- Donovan, D. M. & Foster-Frey, J. LambdaSa2 prophage endolysin requires Cpl-7-binding domains and amidase-5 domain for antimicrobial lysis of streptococci. *FEMS microbiology letters* **287**, 22–33 (2008).
- Becker, S. C., Foster-Frey, J., Stodola, A. J., Anacker, D. & Donovan, D. M. Differentially conserved staphylococcal SH3b_5 cell wall binding domains confer increased staphylolytic and streptolytic activity to a streptococcal prophage endolysin domain. *Gene* **443**, 32–41 (2009).
- Schmelcher, M. *et al.* *Staphylococcus haemolyticus* prophage PhiSH2 endolysin relies on cysteine, histidine-dependent amidohydrolases/peptidases activity for lysis ‘from without’. *Journal of biotechnology* **162**, 289–298 (2012).
- Fischetti, V. A. Bacteriophage lytic enzymes: novel anti-infectives. *Trends in microbiology* **13**, 491–496 (2005).
- Schleifer, K. H. & Kandler, O. Peptidoglycan types of bacterial cell walls and their taxonomic implications. *Bacteriological reviews* **36**, 407–477 (1972).

21. Loessner, M. J., Kramer, K., Ebel, F. & Scherer, S. C-terminal domains of *Listeria monocytogenes* bacteriophage murein hydrolases determine specific recognition and high-affinity binding to bacterial cell wall carbohydrates. *Molecular microbiology* **44**, 335–349 (2002).
22. Briers, Y. *et al.* The high-affinity peptidoglycan binding domain of *Pseudomonas* phage endolysin KZ144. *Biochemical and biophysical research communications* **383**, 187–191 (2009).
23. Kusuma C. & Kokai-Kun J. Comparison of four methods for determining lysostaphin susceptibility of various strains of *Staphylococcus aureus*. *Antimicrob. Agents Chemother.* **49**(8), 3256–3263 (2005).
24. Low, L. Y., Yang, C., Perego, M., Osterman, A. & Liddington, R. Role of net charge on catalytic domain and influence of cell wall binding domain on bactericidal activity, specificity, and host range of phage lysins. *The Journal of biological chemistry* **286**, 34391–34403 (2011).
25. Diez-Martinez, R. *et al.* Improving the lethal effect of cpl-7, a pneumococcal phage lysozyme with broad bactericidal activity, by inverting the net charge of its cell wall-binding module. *Antimicrobial agents and chemotherapy* **57**, 5355–5365 (2013).
26. Schmelcher, M., Powell, A. M., Becker, S. C., Camp, M. J. & Donovan, D. M. Chimeric phage lysins act synergistically with lysostaphin to kill mastitis-causing *Staphylococcus aureus* in murine mammary glands. *Applied and environmental microbiology* **78**, 2297–2305 (2012).
27. Cheng, Q. & Fischetti, V. A. Mutagenesis of a bacteriophage lytic enzyme PlyGBS significantly increases its antibacterial activity against group B streptococci. *Applied microbiology and biotechnology* **74**, 1284–1291 (2007).
28. Briers, Y. *et al.* Muralytic activity and modular structure of the endolysins of *Pseudomonas aeruginosa* bacteriophages phiKZ and EL. *Molecular microbiology* **65**, 1334–1344 (2007).
29. Becker, S. C., Foster-Frey, J. & Donovan, D. M. The phage K lytic enzyme LysK and lysostaphin act synergistically to kill MRSA. *FEMS microbiology letters* **287**, 185–191 (2008).
30. Briers, Y., Lavigne, R., Volckaert, G. & Hertveldt, K. A standardized approach for accurate quantification of murein hydrolase activity in high-throughput assays. *Journal of biochemical and biophysical methods* **70**, 531–533 (2007).
31. Cens, W. *et al.* Expression of a novel P22 ORFan gene reveals the phage carrier state in *Salmonella typhimurium*. *PLoS genetics* **9**, e1003269 (2013).

Acknowledgements

This research study was supported by grants AGL2012-40194-C02-01 (Ministry of Science and Innovation, Spain), FEDER funds and GRUPIN14-139 (Program of Science, Technology and Innovation 2013–2017, Principado de Asturias, Spain), bacteriophage network FAGOMA and research grant 1.5.171.15N of the Research Foundation – Flanders (FWO). DG was a fellow of the Ministry of Science and Innovation, Spain. LR-R was a FWO Pegasus Marie Curie Fellow. PG, BM, RL and AR are members of the FWO Vlaanderen funded “Phagebiotics” research community (WO.016.14).

Author Contributions

Y.B., R.L. and M.B. conceived and designed the experiments. W.-L.C., L.R.-R., D.G., S.K.G. and A.A. performed the experiments. C.H., B.M., Y.B. and P.G. analysed the data. P.G., A.R., L.R.-R. and Y.B. wrote the paper.

Additional Information

Supplementary information accompanies this paper at <http://www.nature.com/srep>

Competing financial interests: R.L. and Y.B. act as scientific advisors of Lisando GmbH. W.-L.C., C.H. and M.B. are employees of Lisando GmbH. Artilysin is a registered trademark in the European Union, United States, and other countries.

How to cite this article: Rodríguez-Rubio, L. *et al.* ‘Artilysation’ of endolysin λ Sa2lys strongly improves its enzymatic and antibacterial activity against streptococci. *Sci. Rep.* **6**, 35382; doi: 10.1038/srep35382 (2016).



This work is licensed under a Creative Commons Attribution 4.0 International License. The images or other third party material in this article are included in the article’s Creative Commons license, unless indicated otherwise in the credit line; if the material is not included under the Creative Commons license, users will need to obtain permission from the license holder to reproduce the material. To view a copy of this license, visit <http://creativecommons.org/licenses/by/4.0/>

© The Author(s) 2016