

Fatal and Nonfatal Outcomes, Incidence of Hypertension, and Blood Pressure Changes in Relation to Urinary Sodium Excretion

Katarzyna Stolarz-Skrzypek, MD, PhD

Tatiana Kuznetsova, MD, PhD

Lutgarde Thijs, MSc

Valérie Tikhonoff, MD, PhD

Jitka Seidlerová, MD, PhD

Tom Richart, MD

Yu Jin, MD

Agnieszka Olszanecka, MD, PhD

Sofia Malyutina, MD, PhD

Edoardo Casiglia, MD, PhD

Jan Filipovský, MD, PhD

Kalina Kawecka-Jaszcz, MD, PhD

Yuri Nikitin, MD, PhD

Jan A. Staessen, MD, PhD

for the European Project on Genes in Hypertension (EPOGH) Investigators

THE EVIDENCE RELATING BLOOD pressure to salt intake in humans originates from population-based studies¹ and randomized clinical trials of interventions on dietary salt intake.^{2,3} Across 52 INTERSALT centers, the median 24-hour urinary sodium excretion ranged from 0.2 to 242.1 mmol.¹ After standardization for sex and age and with adjustments for body mass index and alcohol intake, the cross-sectionally assessed age-related increase in systolic and diastolic blood pressure was significantly steeper with higher sodium excretion. Subsequent analyses, which accounted for regression dilution bias and included complex curve fitting, confirmed the first INTERSALT

Context Extrapolations from observational studies and short-term intervention trials suggest that population-wide moderation of salt intake might reduce cardiovascular events.

Objective To assess whether 24-hour urinary sodium excretion predicts blood pressure (BP) and health outcomes.

Design, Setting, and Participants Prospective population study, involving 3681 participants without cardiovascular disease (CVD) who are members of families that were randomly enrolled in the Flemish Study on Genes, Environment, and Health Outcomes (1985-2004) or in the European Project on Genes in Hypertension (1999-2001). Of 3681 participants without CVD, 2096 were normotensive at baseline and 1499 had BP and sodium excretion measured at baseline and last follow-up (2005-2008).

Main Outcome Measures Incidence of mortality and morbidity and association between changes in BP and sodium excretion. Multivariable-adjusted hazard ratios (HRs) express the risk in tertiles of sodium excretion relative to average risk in the whole study population.

Results Among 3681 participants followed up for a median 7.9 years, CVD deaths decreased across increasing tertiles of 24-hour sodium excretion, from 50 deaths in the low (mean, 107 mmol), 24 in the medium (mean, 168 mmol), and 10 in the high excretion group (mean, 260 mmol; $P < .001$), resulting in respective death rates of 4.1% (95% confidence interval [CI], 3.5%-4.7%), 1.9% (95% CI, 1.5%-2.3%), and 0.8% (95% CI, 0.5%-1.1%). In multivariable-adjusted analyses, this inverse association retained significance ($P = .02$): the HR in the low tertile was 1.56 (95% CI, 1.02-2.36; $P = .04$). Baseline sodium excretion predicted neither total mortality ($P = .10$) nor fatal combined with nonfatal CVD events ($P = .55$). Among 2096 participants followed up for 6.5 years, the risk of hypertension did not increase across increasing tertiles ($P = .93$). Incident hypertension was 187 (27.0%; HR, 1.00; 95% CI, 0.87-1.16) in the low, 190 (26.6%; HR, 1.02; 95% CI, 0.89-1.16) in the medium, and 175 (25.4%; HR, 0.98; 95% CI, 0.86-1.12) in the high sodium excretion group. In 1499 participants followed up for 6.1 years, systolic blood pressure increased by 0.37 mm Hg per year ($P < .001$), whereas sodium excretion did not change (-0.45 mmol per year, $P = .15$). However, in multivariable-adjusted analyses, a 100-mmol increase in sodium excretion was associated with 1.71 mm Hg increase in systolic blood pressure ($P < .001$) but no change in diastolic BP.

Conclusions In this population-based cohort, systolic blood pressure, but not diastolic pressure, changes over time aligned with change in sodium excretion, but this association did not translate into a higher risk of hypertension or CVD complications. Lower sodium excretion was associated with higher CVD mortality.

JAMA. 2011;305(17):1777-1785

www.jama.com

report.⁴ In a meta-analysis of 31 trials with a minimum duration of 4 weeks, lowering 24-hour urinary sodium excretion by 75 mmol was associated with decreases in blood pressure, averag-

Author Affiliations are listed at the end of this article.

Corresponding Author: Jan A. Staessen, MD, PhD, Studies Coordinating Centre, Laboratory of Hypertension, Campus Sint Rafaël, University of Leuven, Kapucijnenvoer 35, Block d, PO Box 7001, BE-3000 Leuven, Belgium (jan.staessen@med.kuleuven.be).

ing 5.06 mm Hg for systolic and 2.70 mm Hg for diastolic among patients with hypertension; and by 2.03 mm Hg and 0.99 mm Hg, respectively, among participants without hypertension.³

Three recent reports,⁵⁻⁷ using statistical modeling based on the aforementioned evidence and a set of complex assumptions, concluded that modest reductions in dietary salt intake, in the order of 3 g/d, could substantially reduce cardiovascular events and medical costs. However, these projections⁵⁻⁷ ignored the inconsistency of the association between blood pressure and various indexes of salt intake in observational studies,^{8,9} the far-reaching extrapolations from short-term intervention trials in normotensive or hypertensive volunteers to the general population,¹⁰ the possible adverse effects of an indiscriminate reduction of

salt intake,¹¹ and the doubtful feasibility of a generalized limitation of salt consumption.^{12,13} The assumption that lower salt intake would in the long run lower blood pressure, to our knowledge, has not yet been confirmed in longitudinal population-based studies. We addressed these issues in randomly selected European population samples. We studied the incidence of mortality and morbidity and the incidence of hypertension in relation to 24-hour urinary sodium excretion at baseline. We examined cross-sectionally and longitudinally the association between blood pressure and 24-hour urinary sodium.

METHODS

Study Population

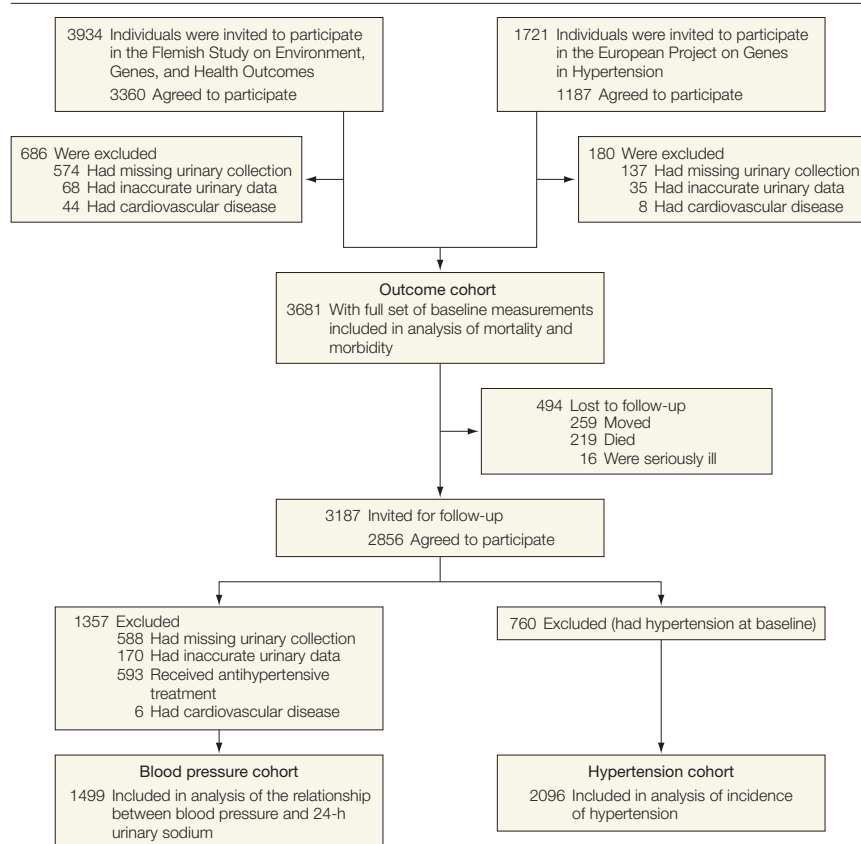
Recruitment for the Flemish Study on Environment, Genes, and Health Out-

comes (FLEMENGHO) started in 1985.¹⁴ From August 1985 to November 1990, a random sample of the households living in a geographically defined area of Northern Belgium was investigated with the goal to recruit an equal number of participants in each of 6 subgroups by sex and age (20-39, 40-59, and ≥ 60 years). All household members aged 20 years or older were invited, provided that the quota of their sex-age group had not yet been satisfied. From June 1996 until January 2004 recruitment of families continued using the former participants (1985-1990) as index persons and also including teenagers.¹⁴ The participants were repeatedly followed up. In all study phases, we used the same standardized methods to measure clinical and biochemical variables, administer questionnaires, and determine incidence of fatal and nonfatal outcomes.¹⁵ The European Project on Genes in Hypertension (EPOGH) recruited participants from 1999 to 2001.¹⁶ The EPOGH investigators were trained at the Studies Coordinating Centre in Leuven, Belgium, and applied the same protocol, questionnaires, and follow-up procedures, as used in FLEMENGHO.¹⁶ Questionnaires were translated from Dutch into Czech, Italian, Polish, and Russian and back translated into Dutch to ensure that all questions had the same meaning in all languages. At baseline the participants collected a 24-hour urine sample. The last follow-up examination, which also included a 24-hour urine sampling, took place from 2005 to 2008 in FLEMENGHO and from 2006 to 2008 in EPOGH, both of which studies were conducted according to the principles outlined in the Helsinki Declaration for Investigation of Human Participants.¹⁷ Each local institutional review board approved the study protocol. Participants provided written informed consent.

Definition of Cohorts

As shown in the flow chart (FIGURE 1), 4547 participants took part in the study, 3360 in FLEMENGHO and 1187 in

Figure 1. Flowchart for Participants in the Study



Outcome cohort, hypertension cohort, and blood pressure cohort refer to participants used to study the incidence of mortality and morbidity, the incidence of hypertension, and the changes in blood pressure over follow-up, respectively. See "Methods" section for the definition of inaccurate urine collections.⁸

EPOGH. We excluded, respectively, 642 and 172 because their baseline 24-hour urine collection was either missing or unreliable. Inaccurate urine collections were defined as a volume less than 300 mL per 24 hours, a 24-hour creatinine excretion of less than 4 mmol or higher than 25 mmol in women and less than 6 mmol or more than 30 mmol in men.⁸ To study the incidence of mortality and morbidity in relation to sodium excretion, we excluded an additional 44 FLEMENGHO and 8 EPOGH participants because they had a history of cardiovascular disease. The outcome cohort, therefore, included 3681 participants. During follow-up, 219 participants died, 16 became seriously ill, and 259 moved out of the study areas, potentially leaving 3187 participants, 2856 (89.6%) of whom agreed to take part in the follow-up examinations. After exclusion of 760 patients with hypertension at baseline, the hypertension cohort consisted of 2096 participants (Figure 1). To study the relation between blood pressure and 24-hour urinary sodium, both cross-sectionally and longitudinally over time, we excluded 588 and 170 participants whose 24-hour urine collection at follow-up was either missing or unreliable, 593 participants taking antihypertensive drug treatment at baseline, or at follow-up, and 6 untreated participants who at follow-up had developed cardiovascular disease. The blood pressure cohort comprised 1499 untreated participants without CVD at baseline and follow-up (Figure 1).

Measurements

Experienced observers measured each participant's blood pressure at baseline and follow-up by auscultation of the Korotkoff sounds. After the participants had rested for 5 minutes in the sitting position, they obtained 5 consecutive blood pressure readings (phase V diastolic pressure) to the nearest 2 mm Hg, using mercury sphygmomanometers. Standard cuffs had a 12 × 24 cm inflatable portion, but if upper arm girth exceeded 31 cm, larger cuffs with 15 × 35 cm bladders were used. For

analysis, the 5 blood pressure readings obtained at baseline or at follow-up were averaged. Digit preference was checked at 6-month intervals.¹⁶ Hypertension was defined as untreated blood pressure equal to or exceeding 140 mm Hg systolic or 90 mm Hg diastolic or the use of antihypertensive drugs.

On average, 1 week after blood pressure measurement (median, 5; range, 0-17 days at baseline; median, 3 days; range, 0-15 days at follow-up), participants collected an exactly timed 24-hour urine sample in a 2500 mL wide-neck plastic container (Sarstedt article number 77.576, Nümbrecht, Germany). Sodium and potassium in urine were determined by flame photometry and creatinine by an automated enzymatic method at certified laboratories.

Overweight was considered a body mass index, calculated as weight in kilograms divided by height in meters squared, of 25 to less than 30; obesity, 30 or higher. The observers administered the same questionnaire at baseline and follow-up to collect each participant's medical history; smoking status; drinking habits; medication use, including contraceptive and hormone replacement therapy; and educational attainment. Venous blood samples were drawn for blood glucose and serum total cholesterol measurement. Diabetes mellitus was determined by self-reported diagnosis, fasting glucose level of at least 126 mg/dL or random blood glucose level of 200 mg/dL, or use of antidiabetic agents.¹⁸ (To convert glucose from mg/dL to mmol/L, multiply by 0.0555; sodium from mmol/d to g/d multiply by 0.02299.)

Assessment of Outcome

In each country, outcomes were adjudicated against source documents, as described in previous publications.^{15,19} The adjudication process was the same for both cohorts. We ascertained vital status of FLEMENGHO participants through December 31, 2009, and of EPOGH participants through August 15, 2008. We obtained the *International Classification of Disease* codes for the immediate and underly-

ing causes of death.¹⁹ For 2856 participants, we also collected information on the incidence of nonfatal events via follow-up visits with repeat administration of the same standardized questionnaire used at baseline. Follow-up data were available for 329 FLEMENGHO participants from 1; 639 from 2; and 1229 from 3 or more follow-up visits and for 659 EPOGH participants from 1 follow-up visit. Physicians ascertained the diseases reported on the death certificates or by the questionnaires against the medical records of general practitioners or hospitals. Fatal and nonfatal stroke did not include transient ischemic attacks. Coronary events included fatal and nonfatal myocardial infarction and coronary revascularization. Fatal and nonfatal cardiovascular events comprised coronary end points, stroke, fatal and nonfatal left ventricular heart failure, aortic aneurysm, cor pulmonale, and pulmonary or arterial embolism. Hospitalizations for unstable angina were coded as ischemic heart disease. Heart failure was either a clinical diagnosis or the diagnosis on the death certificate but was in all cases validated against hospital files or the records held by family physicians. For all end points, we censored participants from analysis after the occurrence of a first event.

Statistical Analysis

For database management and statistical analysis, we used SAS software, version 9.1.3 with the JMP add-on, version 8 (SAS Institute Inc, Cary, North Carolina). Departure from normality was evaluated by Shapiro-Wilk statistic and skewness by the computation of the coefficient of skewness, namely the third moment about the mean divided by the cube of the standard deviation. We computed 95% confidence intervals (CIs) of rates as $R \pm \sqrt{R/T}$, where R and T are the rate and the denominator used to calculate the rate. We compared means and proportions by the standard normal z test and the χ^2 statistic, respectively. Statistical significance was a 2-sided significance level of .05.

To explore the plausibility of the Cox model in the outcome cohort, we plotted incidence rates by tertiles of the 24-hour urinary sodium excretion at baseline, while standardizing for study population, sex, and age by the direct method. In line with other studies,²⁰⁻²⁴ the assumption of a log-linear association between outcome and the 24-hour urinary sodium excretion at baseline was not fulfilled. We therefore compared the risk in each tertile with the overall risk in the whole study population using multiple Cox regression and deviation from mean coding.²⁵ This

approach allows computation of CIs for the hazard ratio (HR) in each tertile without definition of an arbitrary reference group. We used Cox proportional hazard regression as implemented in the PROC SURVIVAL procedure of the SUDAAN software (Research Triangle Institute, Research Triangle Park, North Carolina), version 10.01, to calculate HRs in the outcome and hypertension cohorts, while allowing for covariables and accounting for family clusters. The baseline characteristics considered as covariables in Cox regression were study popula-

tion, sex, age, blood pressure level, body mass index, alcohol intake, use of anti-hypertensive drugs, urinary potassium excretion, educational attainment, and additionally smoking status, total cholesterol level, and diabetes for analyses involving the outcome cohort.

For the blood pressure cohort, we used the *t* test and the McNemar test to evaluate changes from baseline to follow-up in continuous and categorical variables, respectively. Our statistical methods also included single and multiple linear regressions. We included in our model covariables with known physiological relevance for blood pressure. We applied a generalization of the standard linear model, as implemented in the PROC MIXED procedure of the SAS package, to investigate the associations between blood pressure and explanatory variables, while accounting for family clusters and adjusting for covariables. We defined absolute change as a difference between follow-up and baseline values, and relative (percentage) change as the absolute change divided by baseline value multiplied by 100.

RESULTS

Characteristics at Baseline by Cohort

TABLE 1 lists the baseline characteristics of the whole study population by cohort. Baseline characteristics are provided in eTables 1 and 2 for the outcome cohort and in eTables 3 and 4 for the hypertension cohort (available at <http://www.jama.com>) by tertiles of the urinary sodium excretion and by sex. eTable 5 describes the baseline and follow-up characteristics of the blood pressure cohort by country. All participants were white Europeans. From 72.6% to 78.4% of participants were recruited in Flanders. The 3 cohorts included just more than 50% of women.

Analysis of Outcome

In the outcome cohort, median follow-up was 7.9 years. During 39 780 person-years of follow-up, 219 participants died (5.51 deaths per 1000 person-years), and 232 experienced a fatal or

Table 1. Baseline Characteristics of Study Participants by Cohort^a

Characteristics	Cohort		
	Outcome (n = 3681)	Hypertension (n = 2096)	Blood Pressure (n = 1499)
Follow-up, median (IQR), y	7.93 (6.35-17.20)	6.48 (5.13-9.19)	6.14 (5.14-7.93)
Participant characteristics, No. (%)			
FLEMENGHO	2674 (72.6)	1644 (78.4)	1109 (74.0)
EPOGH	1007 (27.4)	452 (21.6)	390 (26.0)
Women	1941 (52.7)	1133 (54.1)	786 (52.4)
Hypertension	949 (25.8)		148 (9.9)
Diabetes mellitus	152 (4.1)	40 (1.9)	29 (1.9)
Antihypertensive treatment	443 (12.0)		
Use of female sex hormones	381 (10.4)	250 (11.9)	165 (11.0)
Use of NSAIDs	502 (13.6)	283 (13.5)	185 (12.3)
Educational attainment, No. (%)			
≤Elementary school	1210 (32.9)	679 (32.4)	437 (29.1)
Secondary school	1896 (51.5)	1118 (53.3)	854 (57.0)
Higher education	575 (15.6)	299 (14.3)	208 (13.9)
Smokers, No. (%)	1044 (28.4)	653 (31.2)	455 (30.4)
Alcohol intake ≥5 g/d, No. (%)	886 (24.1)	465 (22.2)	345 (23.0)
Characteristic, mean (SD)			
Age, y	40.9 (16.3)	38.6 (14.6)	38.3 (14.2)
Blood pressure, mm Hg ^b			
Systolic	124.7 (17.1)	118.7 (10.4)	120.9 (12.8)
Diastolic	76.3 (10.6)	73.3 (8.0)	74.6 (8.9)
BMI	25.2 (4.6)	24.5 (4.0)	24.6 (4.0)
Total cholesterol, mg/dL	209 (46)	207 (46)	207 (42)
24-h urinary measurements, mean (SD)			
Duration, h:m	23:52 (00:59)	23:51 (01:02)	23:48 (01:08)
Volume, L	1.52 (0.64)	1.52 (0.65)	1.54 (0.65)
Sodium, mmol	178.0 (74.8)	174.2 (74.1)	172.7 (62.5)
Potassium, mmol	66.2 (26.3)	66.8 (25.5)	66.3 (22.4)
Sodium-to-potassium ratio	2.93 (1.56)	2.81 (1.27)	2.78 (1.12)
Creatinine, mmol	11.6 (3.9)	11.7 (3.8)	11.9 (3.7)

Abbreviations: BMI, body mass index, which is calculated as weight in kilograms divided by height in meters squared; EPOGH, the European Project on Genes in Hypertension; FLEMENGHO, the Flemish Study on Environment, Genes, and Health Outcomes; IQR, interquartile range; NSAID, nonsteroid antiinflammatory drug.

SI conversion factors: To convert sodium from mmol to g, multiply by 0.02299; potassium from mmol to g, multiply by 0.039098; creatinine from mmol to g, multiply by 0.11312; cholesterol from mg/dL to mmol/L, multiply by 0.0259.

^aOutcome cohort, hypertension cohort, and blood pressure cohort refer to participants used to study the incidence of mortality and morbidity, the incidence of hypertension, and the changes in blood pressure over follow-up, respectively (see Figure 1). See "Methods" section for details of each study.

^bFor the blood pressure determination and the diagnoses of hypertension and diabetes mellitus, see the "Methods" section.

nonfatal cardiovascular complication (5.83 events per 1000 person-years). Mortality included 84 cardiovascular and 135 noncardiovascular deaths. eTable 6 lists the cause-specific mortality and morbidity for the entire outcome cohort and in the FLEMENGHO and EPOGH study populations, separately.

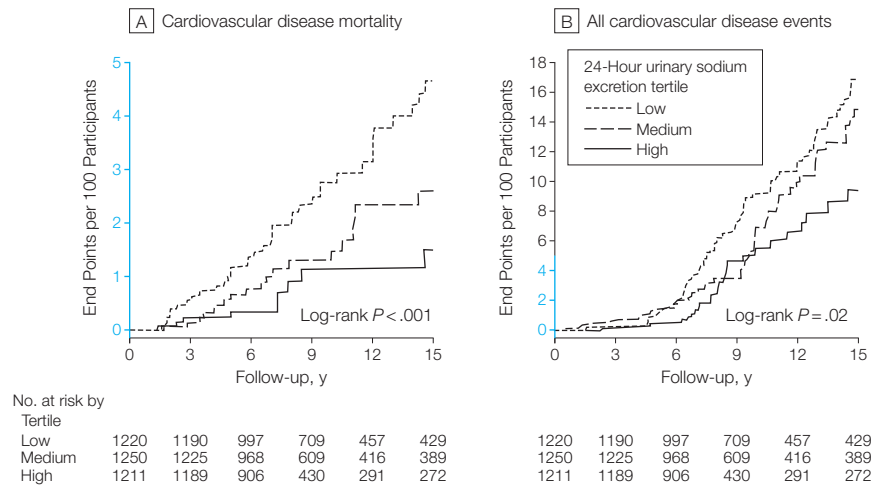
FIGURE 2 shows Kaplan-Meier survival function estimates for cardiovascular mortality and the composite cardiovascular end points in tertiles of the 24-hour urinary sodium excretion. Cardiovascular deaths decreased across increasing tertiles of 24-hour urinary sodium: from 50 in the low (death rate, 4.1%; 95% CI, 3.5%-4.7%), 24 in the medium, (death rate, 1.9%; 95% CI, 1.5%-2.3%); and 10 in the high tertile (death rate, 0.8%, 95% CI, 0.5%-1.1%; $P < .001$). The mean 24-hour urinary sodium excretion for each tertile was defined as 106 mmol for the low, 165 mmol for the medium; and 250 mmol for the high tertile.

EFigure 1 (available at <http://www.jama.com>) shows standardized rates of mortality and combined fatal and nonfatal outcomes across tertiles. TABLE 2

shows the multivariable-adjusted HRs expressing the risk in each tertile of the sex-specific distribution of the 24-hour urinary sodium excretion compared with the overall risk in the whole

outcome cohort. The risk of cardiovascular mortality was significantly elevated in the low tertile (HR, 1.56; 95% CI, 1.02-2.36; $P = .04$) with a significant inverse association between

Figure 2. Kaplan-Meier Survival Function Estimates for Cardiovascular Mortality and All Cardiovascular Events



Tertiles of 24-hour urinary sodium excretion are sex-specific based on baseline measures (see Table 2). This analysis includes the outcome cohort (see Figure 1 and Table 1). Regions of y-axis scales drawn in blue indicate range from 0 to 5.

Table 2. Mortality and Cardiovascular Events by Tertiles of the 24-Hour Urinary Sodium Excretion at Baseline

24-Hour Urinary Sodium Excretion Tertiles at Baseline								
		Low (n = 1220)			Medium (n = 1250)		High (n = 1211)	
No. of women		645			658		638	
Range, mmol		50-126			127-177		178-400	
Mean (SD), mmol		95.1 (22.0)			150.2 (15.0)		231.7 (50.9)	
No. of men		575			592		573	
Range, mmol		50-158			159-221		222-400	
Mean (SD), mmol		120.1 (28.4)			188.8 (17.6)		290.5 (56.2)	
	Total No. of Events of Outcome Cohort	No. of Events	Adjusted HR (95% CI) ^a	No. of Events	Adjusted HR (95% CI) ^a	No. of Events	Adjusted HR (95% CI) ^a	P Value
Mortality								
All causes	219	118	1.14 (0.87-1.50)	64	0.94 (0.75-1.18)	37	1.06 (0.84-1.33)	.10
Cardiovascular	84	50	1.56 (1.02-2.36) ^b	24	1.05 (0.72-1.53)	10	0.95 (0.66-1.38)	.02
Noncardiovascular	135	68	0.98 (0.71-1.36)	40	0.90 (0.68-1.20)	27	1.11 (0.83-1.47)	.64
Fatal and nonfatal events								
All cardiovascular	232	100	1.13 (0.90-1.42)	79	1.11 (0.90-1.36)	53	0.90 (0.73-1.11)	.55
Coronary	98	45	1.42 (0.99-2.04)	34	1.17 (0.89-1.54)	19	0.86 (0.65-1.13)	.10
Stroke	33	13	1.07 (0.57-2.00)	13	1.29 (0.75-2.20)	7	0.78 (0.45-1.33)	.64

Abbreviations: CI, confidence interval; HR, hazard ratio.

This analysis includes the outcome cohort (see Figure 1 and Table 1).

^aHazard ratios were computed by deviation from mean coding²⁵ and express the risk in each tertile of the distribution of 24-hour urinary sodium excretion at baseline compared with the overall risk in the whole outcome cohort. We applied Cox proportional hazard regression to derive HRs, while allowing for covariables and accounting for family clusters. All HRs were adjusted for study population, sex, and baseline variables: age, body mass index, systolic blood pressure, 24-hour urinary potassium excretion, antihypertensive drug treatment, smoking and drinking alcohol, diabetes, total cholesterol, and educational attainment. Adjustment for diastolic blood pressure or mean arterial pressure did not materially alter the findings.

^bP values are for linear trend across the tertiles of 24-hour sodium excretion.

^cP = .04.

cardiovascular mortality and tertile of sodium excretion ($P = .02$).

In sensitivity analyses involving cardiovascular mortality in relation to sex-specific tertiles of 24-hour urinary sodium stratified for age (<60 vs ≥ 60 years), there were 18 deaths (eTable 7; available at <http://www.jama.com>) in the younger age group and 66 deaths (eTable 8) in the older age group. The HRs in the low tertiles were 1.41 (95% CI, 0.70-2.83, $P = .33$) for the younger group and 1.52 (95% CI, 0.94-2.47, $P = .09$) for the older group. Models not including adjustment for systolic blood pressure at baseline (eTable 9) or using 24-hour urinary sodium-to-potassium ratio at baseline as the exposure variable (eTable 10) produced consistent results for cardiovascular mortality. By censoring the adjusted Cox models for cardiovascular mortality at 6, 9, 12, 15, 18, and 21 years, we furthermore explored whether the risk in the low tertile changed with longer follow-up (eTable 11). The HRs were 1.65 (95% CI, 0.85-3.22, $P = .14$) at 6 years, 1.20 (95% CI, 0.54-2.63, $P = .65$) at 9 years, 1.61 (95% CI, 0.77-3.35, $P = .20$) at 12 years, 1.68 (95% CI, 0.88-3.20, $P = .12$) at 15 years, 1.66 (95% CI, 1.00-2.75, $P = .048$) at 18 years, and 1.56 (95% CI, 1.02-2.36, $P = .039$) at 21 years. Excluding cardiovascular deaths that occurred within 3 years of enrollment did not remove significance from the HR in the low tertile (1.67; 95% CI, 1.05-2.68; $P = .03$).

Incidence of Hypertension

The median follow-up was 6.5 years in the hypertension cohort. There were 552 cases of incident hypertension. Unadjusted Kaplan-Meier survival function estimates (eFigure 2) and multivariable-adjusted HRs (eTable 12) showed that baseline 24-hour urinary sodium did not predict the incidence of hypertension. In the entire hypertension cohort, across increasing tertiles of urinary sodium, the number of incident cases amounted to 187 (27.0%; HR, 1.00; 95% CI, 0.87-1.16; $P = .95$) in the low, 190 (26.6%; HR, 1.02; 95% CI, 0.89-1.16, $P = .79$) in the medium, and

175 (25.4%; HR, 0.98; 0.86-1.12, $P = .78$) in the high tertile.

Cross-sectional Analysis of Blood Pressure

In minimally adjusted analyses, in which we accounted only for country, sex, age, and family clusters, most associations of systolic and diastolic blood pressures with 24-hour urinary sodium excretion were significant at baseline as well as at follow-up. In fully adjusted models (eTable 13), the cross-sectional associations of systolic blood pressure with the 24-hour urinary sodium remained significant for the entire blood pressure cohort at baseline and follow-up and for EPOGH participants at baseline and for FLEMENGHO participants at follow-up. For the entire blood pressure cohort, a 100-mmol increase in the 24-hour urinary sodium excretion was associated with increases in systolic pressure of 1.14 mm Hg at baseline and 1.46 mm Hg at follow-up. In fully adjusted models, the cross-sectional associations of diastolic blood pressure with 24-hour urinary sodium excretion lost significance at baseline as well as at follow-up (eTable 13).

Longitudinal Analysis of Blood Pressure

During 6.1 years of follow-up, systolic and diastolic blood pressures increased significantly in all centers except for systolic blood pressure in Pilsen (eTable 5). The annual changes for the entire blood pressure cohort averaged (SE) 0.37 (0.051) mm Hg systolic and 0.47 (0.039) mm Hg diastolic ($P < .001$ for both). Untreated hypertension was present in 148 participants (9.9%) at baseline and 298 (19.9%) at follow-up. Of 1351 initially normotensive participants, 204 (15.1%) became hypertensive during follow-up. Of 148 initially hypertensive participants, 54 (36.5%) were reclassified as normotensive at follow-up (McNemar statistic, 87.2; $P < .001$).

The 24-hour urinary sodium excretion remained unchanged during follow-up ($P = .15$). Only in Kraków did the 24-hour urinary sodium excretion

decrease by a mean (SE) of 6.27 mmol (1.04 mmol) per year ($P < .001$). The absolute and relative changes in systolic and diastolic pressures and 24-hour urinary sodium were not normally distributed for the entire blood pressure cohort (Shapiro-Wilk statistic ≥ 0.92 ; $P < .001$; eFigure 3).

Changes in systolic blood pressure during follow-up were positively related to the corresponding changes in 24-hour urinary sodium in the entire blood pressure cohort and FLEMENGHO participants (TABLE 3). In absolute terms, a 100-mmol increase in the 24-hour urinary sodium excretion over follow-up was associated with a 1.71 mm Hg increase in systolic blood pressure ($P < .001$), while accounting for family cluster, and with adjustments applied for study population, sex, and baseline values of changes in age, body mass index, and alcohol intake (stopping, no change, and starting; $-1,0,1$), 24-hour urinary potassium excretion, use of female sex steroids ($-1,0,1$), and use of nonsteroidal anti-inflammatory drugs ($-1,0,1$). In relative terms, a doubling of the 24-hour urinary sodium excretion was associated with 2.2% increase in systolic blood pressure ($P < .001$; Table 3). In these multivariable-adjusted analyses, the associations between the changes in diastolic blood pressure and 24-hour urinary sodium did not reach significance in absolute or relative terms. EFigures 4 and 5 illustrate the aforementioned multivariable-adjusted changes in systolic and diastolic blood pressure by deciles of the changes in 24-hour urinary sodium.

COMMENT

In multivariable-adjusted models systolic pressure, but not diastolic pressure, was positively and independently correlated with the 24-hour urinary sodium excretion. This correlation was present at baseline and follow-up in the whole study population but was not consistent among FLEMENGHO and EPOGH participants. A key finding was that in longitudinal analyses, systolic but not diastolic blood pressure changed in line with the change in urinary sodium excretion. However, this association did

not translate into a higher risk of hypertension or cardiovascular complications. In contrast, we found a weak but consistent inverse association between cardiovascular mortality and the 24-hour urinary sodium excretion at baseline.

In the blood pressure cohort, sodium excretion, on average, did not change in any country with the exception of Poland, where at baseline it was higher than in any other study site. This observation is in keeping with the lack of changes in urinary sodium excretion in 38 US studies conducted over 46 years (1957-2003)²⁶ and in 13 surveys carried out in the United Kingdom over 25 years (1984-2008).²⁷ These studies^{26,27} along with our current results support the concept that sodium intake is difficult to manipulate and is regulated²⁷ to maintain the concentration of extracellular and serum sodium within a narrow range. Exchangeable sodium is increased in hypertensive patients and correlates positively with arterial pressure,²⁸ but patients with primary hypertension do not have a larger extracellular fluid volume, plasma volume, or blood volume compared with normotensive controls.²⁹

In the longitudinal analysis of the blood pressure cohort, systolic pressure increased by 1.71 mm Hg for a 100-mmol per day increment in urinary sodium, whereas diastolic pressure remained unaffected. Two meta-analyses^{10,30} reported blood pressure responses to salt restriction of similar magnitude in normotensive individuals. The effect sizes were 1.0 mm Hg systolic ($P < .001$) and 0.1 mm Hg diastolic ($P = .64$) per 100-mmol decrease in 24-hour urinary sodium³⁰ or 1.2 mm Hg systolic ($P < .001$) and 0.26 mm Hg diastolic ($P = .12$) per 160 mmol.¹⁰ In a meta-regression analysis by He and MacGregor,³¹ a reduction of salt intake by 3 g/d predicted a decrease in systolic/diastolic blood pressure by 3.6 to 5.6/1.9 to 3.2 mm Hg in hypertensive patients and by 1.8 to 3.5/0.8 to 1.8 mm Hg in normotensive participants. Systolic pressure increases with age at least until the eighth decade of life, whereas diastolic pressure increases until age 50

Table 3. Multivariable Adjusted Longitudinal Associations Between Changes in Blood Pressure and 24-Hour Urinary Sodium by Study Population^a

Study Population	Absolute		Relative	
	Estimates (95% CI) ^b	P Value	Estimates (95% CI) ^b	P Value
Change in systolic pressure				
FLEMENGHO	2.373 (1.154 to 3.392)	<.001	2.740 (1.410 to 4.069)	<.001
EPOGH	0.196 (−1.409 to 1.801)	.81	0.085 (−2.181 to 2.351)	.94
All	1.711 (0.786 to 2.637)	<.001	2.211 (1.059 to 3.364)	<.001
Change in diastolic pressure				
FLEMENGHO	0.576 (−0.246 to 1.398)	.17	1.476 (−0.113 to 3.065)	.07
EPOGH	−0.052 (−1.317 to 1.212)	.94	−0.175 (−3.064 to 2.714)	.90
All	0.379 (−0.313 to 1.070)	.28	1.107 (−0.279 to 2.492)	.12

Abbreviations: CI, confidence interval; EPOGH, the European Project on Genes in Hypertension; FLEMENGHO, Flemish Study on Environment, Genes, and Health Outcomes.

^aReasons for exclusion from analysis are explained in the "Methods" section.

^bEstimates and 95% CIs express the change in systolic blood pressure per 100-millimole increase in 24-hour urinary sodium excretion or the percentage change in systolic pressure for a doubling of 24-hour urine sodium. Parameter adjustment definitions are in the "Results" section. Estimates for all participants were adjusted for study population.

years and thereafter either levels off or slightly decreases.³² In long-term studies such as ours, these divergent age-related systolic and diastolic trends in blood pressure associated with changes in 24-hour urinary sodium.

Several prospective studies dealt with the effects of salt intake on the incidence of hypertension or cardiovascular complications, but few^{21,33-36} based their assessments on 24-hour urinary sodium excretion, the most accurate approach to assess salt intake. None described the longitudinal association between changes in blood pressure on a continuous scale in relation to changes in 24-hour urinary sodium excretion. He and colleagues³⁴ examined the effects of reducing salt intake on the incidence of hypertension for 128 participants. During the randomized intervention of 18 months the between-group gradient in 24-hour urinary sodium excretion averaged 33 mmol. After an average of 7 years of follow-up without any intervention, the multivariable adjusted odds of hypertension for active intervention vs control was 0.65 but in line with our findings, it did not reach significance (95% CI, 0.25-1.69; $P = .37$).³⁴ In a 7-year study involving 233 randomly selected children, no association was found between the changes in blood pressure and salt intake that was extrapolated from overnight urine samples that were

repeatedly collected during follow-up, with sodium excretion rates averaged for analysis.³⁷

In our current study, cardiovascular mortality was significantly elevated in the low tertile of 24-hour urinary sodium excretion with a significant inverse association with sodium excretion across tertiles. It is unlikely that these findings were due to reverse causality because we excluded patients with a history of CVD. Moreover, these observations were consistent when we censored cardiovascular deaths over a time span ranging from 6 to 21 years, or excluded cardiovascular deaths occurring within 3 years of enrolment. Similarly, models including or excluding systolic pressure as covariable produced consistent results. Our current observations on cardiovascular mortality are consistent with several other reports.^{33,38-40} The National Health and Nutrition Examination Surveys (NHANES) I³⁸ and II³⁹ demonstrated an inverse association of cardiovascular and total mortality with salt intake as assessed from dietary recall with a similar trend in NHANES III.⁴⁰ Alderman and colleagues³³ followed up for 3.5 years 2937 patients with mild to moderate hypertension. There was an inverse association between the incidence of myocardial infarction and 24-hour urinary sodium excretion at baseline for the total population and for men, but not women. For men, the race- and age-adjusted HR expressing the risk in the lowest vs the

highest quartile of 24-hour urinary sodium was 4.3 (95% CI, 1.7-10.6). Other investigators criticized Alderman's findings, because he instructed his patients to avoid high-salt foods 4 to 5 days before sodium excretion measurements were taken, which might have led to distorted levels. In our epidemiological study, which was conducted outside a medical environment, participants did not receive any recommendations from the research team about moderating their salt consumption. The underlying mechanisms explaining the inverse association between cardiovascular mortality and 24-hour urinary sodium excretion might be that a salt intake low enough to decrease blood pressure also increases sympathetic nerve activity, decreases insulin sensitivity, activates the renin-angiotensin system, and stimulates aldosterone secretion.¹⁰

At variance with our current findings, other prospective studies suggested that a high-salt intake may lead to a worse outcome. In the Scottish Heart Health Study,²¹ 24-hour urinary sodium predicted coronary heart disease in women but not men. The HRs for the lowest quintile vs the 4 other quintiles of sodium excretion combined were 1.16 (95% CI, 1.00-1.33) and 1.05 (95% CI, 0.96-1.14), respectively. The analyses were only adjusted for age. Cook and colleagues³⁶ analyzed the long-term results of dietary sodium restriction on cardiovascular outcomes by combining 10 to 15 years of follow-up of 744 and 2382 participants randomized in the Trials of Hypertension Prevention, phases 1 and 2. Net sodium reductions during the intervention period (from 18 to 48 months) were 44 mmol and 33 mmol per day, respectively. The follow-up for mortality was 100%, but only 77% for morbidity. With adjustments applied for trial, clinical site, race, sex, and age, the HRs for intervention vs control were 0.80 (95% CI, 0.51-1.26; $P=.34$) for total mortality and 0.75 (95% CI, 0.57-0.99) for cardiovascular events ($P=.04$).³⁶ In a 19-year follow-up study of 3126 Fins,³⁵ the multivariable-adjusted HRs associated with a 100-mmol increase in 24-hour urinary so-

dium were 1.26 (95% CI, 1.06-1.50) for total mortality, 1.45 (95% CI, 1.14-1.84) for CVD, and 1.51 (95% CI, 1.14-2.00) for coronary heart disease. When analyses were done separately for each sex, the HRs were significant in men only.³⁵

In a meta-analysis including some of the aforementioned studies, Strazzullo and colleagues⁴¹ reported that the risk of stroke increased by 6% (95% CI, 3%-10%; $P=.04$) for an increase in sodium intake by 50 mmol per day. A similar trend for CVD was not significant (19%; 95% CI, -31%-107%; $P=.53$).⁴¹ Across the reports included in Strazzullo's meta-analysis,⁴¹ the methods for assessing salt intake were not standardized. Studies with exclusively fatal outcomes were pooled with those including both fatal and nonfatal events. Moreover, the HRs used in the variance-weighted meta-regression analysis were not standardized to the same amount of sodium.⁴¹

Our current study has to be interpreted within the context of its potential limitations. First, one 24-hour urine collection might be insufficient to characterize an individual's habitual salt intake, but it does accurately reflect the average salt consumption of groups of subjects.⁴² Thus, our analyses based on tertiles of 24-hour urinary sodium should be less vulnerable to the high intraindividual variability of sodium excretion. Second, our study population was relatively young, so that the number of events was relatively small, leading to a potential underestimation of the risk of excessive sodium intake. In particular, EPOGH participants were younger than those participating in the FLEMENGHO study and were only followed up for a median of 6.5 years compared with 10.6 years. Third, our study included only white Europeans and its findings therefore cannot be extrapolated to Asian or in particular black individuals, who might be more salt sensitive than white people.^{43,44} Fourth, we did not assess sodium sensitivity. Blood pressure responses to changes in dietary salt intake are heterogeneous,⁴⁵ but there is no practical clinical test to

assess sodium sensitivity in individual subjects.

In conclusion, we observed significant cross-sectional and longitudinal associations between systolic pressure and sodium excretion in the whole study population. However, these associations were not consistent among FLEMENGHO and EPOGH participants. Diastolic pressure was not correlated with sodium excretion. Baseline sodium excretion did not predict the incidence of hypertension. The associations between systolic pressure and sodium excretion did not translate into less morbidity or improved survival. On the contrary, low sodium excretion predicted higher cardiovascular mortality. Taken together, our current findings refute the estimates of computer models of lives saved and health care costs reduced with lower salt intake.⁵⁻⁷ They do also not support the current recommendations of a generalized and indiscriminate reduction of salt intake at the population level. However, they do not negate the blood pressure-lowering effects of a dietary salt reduction in hypertensive patients.^{10,30}

Author Affiliations: Studies Coordinating Centre, Division of Hypertension and Cardiovascular Rehabilitation, Department of Cardiovascular Diseases, University of Leuven, Leuven, Belgium (Drs Stolarz-Skrzypek, Kuznetsova, Thijs, Richart, Jin, and Staessen); First Department of Cardiology and Hypertension, Jagiellonian University Medical College, Kraków, Poland (Drs Stolarz-Skrzypek, Olszanecka, and Kawecka-Jaszcz); Department of Clinical and Experimental Medicine, University of Padova, Padova, Italy (Drs Tikhonoff and Casiglia); Faculty of Medicine in Pilsen, Charles University, Pilsen, Czech Republic (Drs Seidlerová and Filipovský); Institute of Internal Medicine, Novosibirsk, Russian Federation (Drs Malyutina and Nikitin); and Department of Epidemiology, Maastricht University, Maastricht, the Netherlands (Drs Richart and Staessen).

Author Contributions: Dr Staessen had full access to all of the data in the study and takes responsibility for the integrity of the data and the accuracy of the data analysis.

Study concept and design: Stolarz-Skrzypek, Kuznetsova, Kawecka-Jaszcz, Staessen.

Acquisition of data: Stolarz-Skrzypek, Kuznetsova, Tikhonoff, Seidlerová, Richart, Olszanecka, Malyutina, Casiglia, Filipovský, Nikitin, Staessen.

Analysis and interpretation of data: Stolarz-Skrzypek, Kuznetsova, Thijs, Jin, Staessen.

Drafting of the manuscript: Stolarz-Skrzypek, Staessen.

Critical revision of the manuscript for important intellectual content: Kuznetsova, Thijs, Tikhonoff, Seidlerová, Richart, Jin, Olszanecka, Malyutina, Casiglia, Filipovský, Kawecka-Jaszcz, Nikitin.

Statistical analysis: Stolarz-Skrzypek, Thijs, Tikhonoff, Casiglia, Staessen.

Obtained funding: Casiglia, Filipovský, Staessen.

Administrative, technical, or material support: Stolarz-Skrzypek, Kuznetsova, Richart, Malyutina, Filipovský, Kawecka-Jaszcz, Nikitin.

Study supervision: Tikhonoff, Casiglia, Filipovský, Kawecka-Jaszcz, Staessen.

Conflict of Interest Disclosures: All authors have completed and submitted the ICMJE Form for Disclosure of Potential Conflicts of Interest and none were reported.

Funding/Support: The European Union grants IC15-CT98-0329-EPOGH, LSHM-CT-2006-037093. InGenious HyperCare, and HEALTH-F4-2007-201550 HyperGenes supported the Studies Coordinating Centre (Leuven, Belgium) and the studies in Pilsen (Czech Republic), Padova (Italy), Kraków (Poland), and Novosibirsk (Russian Federation). The Studies Coordinating Centre also received grants G.0575.06 and G.0734.09 from the Fonds voor Wetenschappelijk Onderzoek Vlaanderen, Ministry of the Flemish Community, Brussels, Belgium, and the grants OT/00/25 and OT/05/49 from the Katholieke Universiteit Leuven, Belgium. The Polish Ministry for Science and Higher Education supported the fellowship of Dr Stolarz-Skrzypek in Leuven. The Czech Society of Hypertension provided additional funding to Dr Seidlerová.

Role of the Sponsor: The funding source had no role in the design and conduct of the study; collection, management, analysis, and interpretation of the data; and preparation, review, or approval of the manuscript.

Online-Only Material: eTables 1 through 13 and eFigures 1 through 5 are available at <http://www.jama.com>.

Additional Contribution: The authors gratefully acknowledge the expert assistance of Ms Sandra Covens and Ms Ya Zhu, who are employees of the Studies Coordinating Centre, Leuven, Belgium, and did not receive any compensation for their contribution to this study. The FLEMENGHO and EPOGH investigators at the time of the studies are listed at <http://www.jama.com>.

REFERENCES

- Intersalt Cooperative Research Group. Intersalt: an international study of electrolyte excretion and blood pressure. Results for 24 hour urinary sodium and potassium excretion. *BMJ*. 1988;297(6644):319-328.
- Sacks FM, Svetkey LP, Vollmer WM, et al; DASH-Sodium Collaborative Research Group. Effects on blood pressure of reduced dietary sodium and the Dietary Approaches to Stop Hypertension (DASH) diet. *N Engl J Med*. 2001;344(1):3-10.
- He FJ, MacGregor GA. Effect of longer-term modest salt reduction on blood pressure. *Cochrane Database Syst Rev*. 2004;(3):CD004937.
- Elliott P, Stamler J, Nichols R, et al; Intersalt Cooperative Research Group. Intersalt revisited: further analyses of 24 hour sodium excretion and blood pressure within and across populations. *BMJ*. 1996;312(7041):1249-1253.
- Palar K, Sturm R. Potential societal savings from reduced sodium consumption in the U.S. adult population. *Am J Health Promot*. 2009;24(1):49-57.
- Smith-Spangler CM, Juusola JL, Enns EA, Owens DK, Garber AM. Population strategies to decrease sodium intake and the burden of cardiovascular disease: a cost-effectiveness analysis. *Ann Intern Med*. 2010;152(8):481-487, W170-3.
- Bibbins-Domingo K, Chertow GM, Coxson PG, et al. Projected effect of dietary salt reductions on future cardiovascular disease. *N Engl J Med*. 2010;362(7):590-599.
- Staessen J, Bulpitt C, Fagard R, Joossens JV, Lijnen P, Amery A. Four urinary cations and blood pressure. A population study in two Belgian towns. *Am J Epidemiol*. 1983;117(6):676-687.
- Smith WCS, Crombie IK, Tavendale RT, Gulland SK, Tunstall-Pedoe HD. Urinary electrolyte excretion, alcohol consumption, and blood pressure in the Scottish heart health study. *BMJ*. 1988;297(6644):329-330.
- Graudal NA, Galløe AM, Garred P. Effects of sodium restriction on blood pressure, renin, aldosterone, catecholamines, cholesterol, and triglyceride: a meta-analysis. *JAMA*. 1998;279(17):1383-1391.
- Alderman MH. Reducing dietary sodium: the case for caution. *JAMA*. 2010;303(5):448-449.
- Staessen J, Bulpitt CJ, Fagard R, Joossens JV, Lijnen P, Amery A. Salt intake and blood pressure in the general population: a controlled intervention trial in two towns. *J Hypertens*. 1988;6(12):965-973.
- Staessen JA, Lijnen P, Thijs L, Fagard R. Salt and blood pressure in community-based intervention trials. *Am J Clin Nutr*. 1997;65(2)(Suppl):661S-670S.
- Staessen JA, Wang JG, Brand E, et al. Effects of three candidate genes on prevalence and incidence of hypertension in a Caucasian population. *J Hypertens*. 2001;19(8):1349-1358.
- Li Y, Zagato L, Kuznetsova T, et al. Angiotensin-converting enzyme I/D and α -adducin Gly460Trp polymorphisms: from angiotensin-converting enzyme activity to cardiovascular outcome. *Hypertension*. 2007;49(6):1291-1297.
- Kuznetsova T, Staessen JA, Kawecka-Jaszcz K, et al. Quality control of the blood pressure phenotype in the European Project on Genes in Hypertension. *Blood Press Monit*. 2002;7(4):215-224.
- World Medical Association Declaration of Helsinki. World Medical Association declaration of Helsinki. Recommendations guiding physicians in biomedical research involving human subjects. *JAMA*. 1997;277(11):925-926.
- Expert Committee on the Diagnosis and Classification of Diabetes Mellitus. Report of the expert committee on the diagnosis and classification of diabetes mellitus. *Diabetes Care*. 2003;26(Suppl 1):S5-S20.
- Hansen TW, Thijs L, Li Y, et al; International Database on Ambulatory Blood Pressure in Relation to Cardiovascular Outcomes Investigators. Prognostic value of reading-to-reading blood pressure variability over 24 hours in 8938 subjects from 11 populations. *Hypertension*. 2010;55(4):1049-1057.
- Kagan A, Popper JS, Rhoads GG, Yano K. Dietary and other risk factors for stroke in Hawaiian Japanese men. *Stroke*. 1985;16(3):390-396.
- Tunstall-Pedoe H, Woodward M, Tavendale R, A'Brook R, McCluskey MK. Comparison of the prediction by 27 different factors of coronary heart disease and death in men and women of the Scottish Heart Health Study: cohort study. *BMJ*. 1997;315(7110):722-729.
- He J, Ogden LG, Vupputuri S, Bazzano LA, Loria C, Whelton PK. Dietary sodium intake and subsequent risk of cardiovascular disease in overweight adults. *JAMA*. 1999;282(21):2027-2034.
- Umesawa M, Iso H, Date C, et al; JACC Study Group. Relations between dietary sodium and potassium intakes and mortality from cardiovascular disease: the Japan Collaborative Cohort Study for Evaluation of Cancer Risks. *Am J Clin Nutr*. 2008;88(1):195-202.
- Chien KL, Hsu HC, Chen PC, et al. Urinary sodium and potassium excretion and risk of hypertension in Chinese: report from a community-based cohort study in Taiwan. *J Hypertens*. 2008;26(9):1750-1756.
- Hosmer DW Jr, Lemeshow S. *Applied logistic regression*. New York: John Wiley & Sons; 1989.
- Bernstein AM, Willett WC. Trends in 24-h urinary sodium excretion in the United States, 1957-2003: a systematic review. *Am J Clin Nutr*. 2010;92(5):1172-1180.
- McCarron DA, Geerling JC, Kazaks AG, Stern JS. Can dietary sodium intake be modified by public policy? *Clin J Am Soc Nephrol*. 2009;4(11):1878-1882.
- Lever AF, Beretta-Piccoli C, Brown JJ, Davies DL, Fraser R, Robertson JIS. Sodium and potassium in essential hypertension. *Br Med J (Clin Res Ed)*. 1981;283(6289):463-468.
- Cleland JGF, Dargie HJ, Robertson I, Robertson JIS, East BW. Total body electrolyte composition in patients with heart failure: a comparison with normal subjects and patients with untreated hypertension. *Br Heart J*. 1987;58(3):230-238.
- Midgley JP, Matthew AG, Greenwood CMT, Logan AG. Effect of reduced dietary sodium on blood pressure: a meta-analysis of randomized controlled trials. *JAMA*. 1996;275(20):1590-1597.
- He FJ, MacGregor GA. How far should salt intake be reduced? *Hypertension*. 2003;42(6):1093-1099.
- Franklin SS, Gustin W IV, Wong ND, et al. Hemodynamic patterns of age-related changes in blood pressure: The Framingham Heart Study. *Circulation*. 1997;96(1):308-315.
- Alderman MH, Madhavan S, Cohen H, Sealey JE, Laragh JH. Low urinary sodium is associated with greater risk of myocardial infarction among treated hypertensive men. *Hypertension*. 1995;25(6):1144-1152.
- He J, Whelton PK, Appel LJ, Charleston J, Klag MJ. Long-term effects of weight loss and dietary sodium reduction on incidence of hypertension. *Hypertension*. 2000;35(2):544-549.
- Tuomilehto J, Jousilahti P, Rastenyte D, et al. Urinary sodium excretion and cardiovascular mortality in Finland: a prospective study. *Lancet*. 2001;357(9259):848-851.
- Cook NR, Cutler JA, Obarzanek E, et al. Long term effects of dietary sodium reduction on cardiovascular disease outcomes: observational follow-up of the trials of hypertension prevention (TOHP). *BMJ*. 2007;334(7599):885-888.
- Geleijnse JM, Grobbee DE, Hofman A. Sodium and potassium intake and blood pressure change in childhood. *BMJ*. 1990;300(6729):899-902.
- Alderman MH, Cohen H, Madhavan S. Dietary sodium intake and mortality: the National Health and Nutrition Examination Survey (NHANES I). *Lancet*. 1998;351(9105):781-785.
- Cohen HW, Hailpern SM, Fang J, Alderman MH. Sodium intake and mortality in the NHANES II follow-up study. *Am J Med*. 2006;119(3):275.e7-275.14.
- Cohen HW, Hailpern SM, Alderman MH. Sodium intake and mortality follow-up in the Third National Health and Nutrition Examination Survey (NHANES III). *J Gen Intern Med*. 2008;23(9):1297-1302.
- Strazzullo P, D'Elia L, Kandala NB, Cappucco FP. Salt intake, stroke, and cardiovascular disease: meta-analysis of prospective studies. *BMJ*. 2009;339:b4567.
- Luft FC, Fineberg NS, Sloan RS. Estimating dietary sodium intake in individuals receiving a randomly fluctuating intake. *Hypertension*. 1982;4(6):805-808.
- Morris RC Jr, Sebastian A, Forman A, Tanaka M, Schmidlin O. Normotensive salt sensitivity: effects of race and dietary potassium. *Hypertension*. 1999;33(1):18-23.
- Schmidlin O, Forman A, Tanaka M, Sebastian A, Morris RC Jr. NaCl-induced renal vasoconstriction in salt-sensitive African Americans: antipressor and hemodynamic effects of potassium bicarbonate. *Hypertension*. 1999;33(2):633-639.
- Campese VM. Salt-sensitive hypertension: renal and cardiovascular implications. *Nutr Metab Cardiovasc Dis*. 1999;9(3):143-156.

Supplementary Online Content

Stolarz-Skrzypek K, Kuznetsova T, Thijs L, et al; European Project on Genes in Hypertension (EPOGH) Investigators: Fatal and Nonfatal Outcomes, Incidence of Hypertension, and Blood Pressure Changes in Relation to Urinary Sodium Excretion. *JAMA*. 2011;305(17):1777-1785.

eTable 1. Characteristics of Women in the Outcome Cohort by Tertiles of the 24-Hour Urinary Sodium Excretion at Baseline

eTable 2. Characteristics of Men in the Outcome Cohort by Tertiles of the 24-Hour Urinary Sodium Excretion at Baseline

eTable 3. Characteristics of Women in the Hypertension Cohort by Tertiles of the 24-Hour Urinary Sodium Excretion at Baseline

eTable 4. Characteristics of Men in the Hypertension Cohort by Tertiles of the 24-Hour Urinary Sodium Excretion at Baseline

eTable 5. Characteristics of the Participants in the Blood Pressure Cohort at Baseline and at Follow-up by Country

eTable 6. Causes of Cardiovascular Mortality and Morbidity in the Outcome Cohort

eTable 7. Multivariable-Adjusted Hazard Ratios for Mortality and Cardiovascular Events by Tertiles of the 24-Hour Urinary Sodium Excretion at Baseline in 3194 Participants Younger Than 60 Years

eTable 8. Multivariable-Adjusted Hazard Ratios for Mortality and Cardiovascular Events by Tertiles of the 24-Hour Urinary Sodium Excretion at Baseline in 487 Participants 60 Years or Older

eTable 9. Multivariable-Adjusted Hazard Ratios for Mortality and Cardiovascular Events by Tertiles of the 24-Hour Urinary Sodium Excretion at Baseline Excluding Any Adjustment for Blood Pressure

eTable 10. Multivariable-Adjusted Hazard Ratios for Mortality and Cardiovascular Events by Tertiles of the 24-Hour Urinary Sodium-to-Potassium Ratio at Baseline

eTable 11. Multivariable-Adjusted Hazard Ratios for Cardiovascular Mortality by Tertiles of the 24-Hour Urinary Sodium Excretion at Baseline after Censoring of Follow-up at 6, 9, 12, 15, 18 and 21 Years

eTable 12. Multivariable-Adjusted Hazard Ratios for Incidence of Hypertension by Tertiles of the 24-Hour Urinary Sodium Excretion at Baseline

eTable 13. Multivariable-Adjusted Cross-Sectional Associations Between Blood Pressure and 24-Hour Urinary Sodium by Study Population and Study Phase

eFigure 1. Incidence of Mortality and Cardiovascular Events

eFigure 2. Kaplan-Meier Estimates for the Incidence of Hypertension by Tertiles of the 24-Hour Urinary Sodium Excretion at Baseline

eFigure 3. Distribution of the Absolute (A, C, E) and Relative (B, D, F) Changes in Systolic Blood Pressure (A, B), Diastolic Blood Pressure (C, D), and 24-Hour Urinary Sodium Excretion (E, F) in 1499 Participants of the *Blood Pressure Cohort* Followed Up for a Median of 6.1 Years

eFigure 4. Change in Systolic Blood Pressure During Follow-Up By Deciles of the Change in the 24-Hour Urinary Sodium Excretion in the *Blood Pressure Cohort* (n=1499)

eFigure 5. Change in Diastolic Blood Pressure During Follow-Up by Deciles of the Change in 24-Hour Urinary Sodium Excretion in the *Blood Pressure Cohort* (n=1499)

This supplementary material has been provided by the authors to give readers additional information about their work.

eTable 1. Characteristics of Women in the *Outcome Cohort*^a by Tertiles of the 24-Hour Urinary Sodium Excretion at Baseline

	24-Hour Urinary Sodium Excretion Tertiles		
	Low (n=645)	Medium (n=658)	High (n=638)
Participant characteristics, No (%)			
Diabetes mellitus	21 (3.3)	19 (2.9)	31 (4.9)
Antihypertensive treatment	96 (14.9)	82 (12.5)	106 (16.6) ^M
Smokers	167 (25.9)	146 (22.2)	141 (22.1)
Alcohol intake ≥ 5 g/day	69 (10.7)	68 (10.3)	89 (14.0) ^M
Educational attainment, No. (%)			
\leq Elementary school	281 (43.6)	241 (36.6)	188 (29.5)
Secondary school	289 (44.8)	318 (48.3)	327 (51.3)
Higher education	75 (11.6)	99 (15.1) ^L	123 (19.3) ^{LM}
Characteristic, mean (SD)			
Age, y	42.5 (17.6)	41.0 (16.0)	39.2 (14.7) ^{LM}
Blood pressure, mm Hg ^b			
Systolic	123.3 (19.4)	121.0 (16.8) ^L	121.7 (15.8)
Diastolic	74.7 (11.0)	74.6 (9.7)	75.4 (10.2)
Weight, kg	63.4 (12.9)	65.4 (12.3) ^L	68.7 (13.9) ^{LM}
BMI, kg/m ²	24.6 (5.1)	24.9 (4.6)	25.9 (5.3) ^{LM}
Total cholesterol, mg/dL	213 (51)	209 (47)	204 (45) ^L
24-hour urinary measurements, mean (SD)			
Duration, h:m	23:54 (00:50)	23:47 (00:56)	23:55 (00:53)
Volume, L	1.37 (0.64)	1.51 (0.62) ^L	1.67 (0.65) ^{LM}
Sodium, mmol	95.1 (22.0)	150.2 (15.0) ^L	231.7 (50.9) ^{LM}
Potassium, mmol	51.6 (17.8)	61.0 (20.5) ^L	69.1 (24.0) ^{LM}
Sodium-to-potassium ratio	2.02 (0.84)	2.76 (1.19) ^L	3.75 (1.73) ^{LM}
Creatinine, mmol	8.4 (2.2)	9.5 (2.0) ^L	10.6 (2.5) ^{LM}

Abbreviation: BMI, body mass index, which is calculated as weight in kilograms divided by height in meters squared.

SI conversion factors: To convert millimoles of sodium to grams, multiply by 0.02299; to convert millimoles of potassium to grams, multiply by 0.039098; to convert millimoles of creatinine to grams, multiply by 0.11312; cholesterol from mg/dl to mmol/L, multiply by 0.0259.

^aThis analysis includes the *Outcome Cohort* (n=3681; see Figure 1 and Table 1).

^bFor the blood pressure determination and diabetes mellitus diagnosis, see the "Methods" section.

P<.05 vs low (L) or middle (M) tertile of 24-hour urinary sodium excretion.

eTable 2. Characteristics of Men in the *Outcome Cohort*^a by Tertiles of the 24-Hour Urinary Sodium Excretion at Baseline

	24-Hour Urinary Sodium Excretion Tertiles		
	Low (n=575)	Medium (n=592)	High (n=573)
Participant characteristics, No (%)			
Diabetes mellitus	29 (5.0)	26 (4.4)	26 (4.5)
Antihypertensive treatment	64 (11.1)	44 (7.4) ^L	51 (8.9)
Smokers	202 (35.1)	221 (37.3)	167 (29.1) ^{LM}
Alcohol intake ≥5 g/day	197 (34.3)	211 (35.6)	252 (44.0)
Educational attainment, No. (%)			
≤ Elementary school	199 (34.6)	188 (31.8)	113 (19.7)
Secondary school	288 (50.1)	327 (55.2)	347 (60.6)
Higher education	88 (15.3)	77 (13.0)	113 (19.7)
Characteristic, mean (SD)			
Age, y	41.8 (18.1)	41.3 (16.4)	39.5 (14.4) ^{LM}
Blood pressure, mm Hg ^b			
Systolic	128.7 (17.9)	126.6 (14.9) ^L	128.1 (15.3)
Diastolic	77.8 (11.0)	76.6 (10.4)	79.0 (10.9) ^M
Weight, kg	74.1 (13.0)	76.9 (12.4) ^L	81.2 (14.1) ^{LM}
BMI	24.7 (3.8)	25.2 (3.8) ^L	26.1 (4.3) ^{LM}
Total cholesterol, mg/dL	205 (48)	206 (47)	205 (48)
24-hour urinary measurements, mean (SD)			
Duration, h:m	23:51 (01:04)	23:50 (01:07)	23:54 (01:01)
Volume, L	1.32 (0.59)	1.48 (0.57) ^L	1.78 (0.63) ^{LM}
Sodium, mmol	120.1 (28.4)	188.8 (17.6) ^L	290.5 (56.2) ^{LM}
Potassium, mmol	61.6 (26.3)	71.6 (27.1) ^L	84.5 (29.2) ^{LM}
Sodium-to-potassium ratio	2.21 (0.93)	2.99 (1.58) ^L	3.89 (1.79) ^{LM}
Creatinine, mmol	12.1 (3.2)	13.9 (3.4) ^L	16.1 (3.8) ^{LM}

Abbreviation: BMI, body mass index, which is calculated as weight in kilograms divided by height in meters squared.

SI conversion factors: To convert millimoles of sodium to grams, multiply by 0.02299; to convert millimoles of potassium to grams, multiply by 0.039098; to convert millimoles of creatinine to grams, multiply by 0.11312; cholesterol from mg/dl to mmol/L, multiply by 0.0259.

^aThis analysis includes the *Outcome Cohort* (n=3681; see Figure 1 and Table 1).

^bFor the blood pressure determination and diabetes mellitus diagnosis, see the "Methods" section.

P<.05 vs low (L) or middle (M) tertile of 24-hour urinary sodium excretion.

eTable 3. Characteristics of Women in the *Hypertension Cohort*^a by Tertiles of the 24-Hour Urinary Sodium Excretion at Baseline

	24-Hour Urinary Sodium Excretion Tertiles		
	Low (n=375)	Medium (n=385)	High (n=373)
Participant characteristics, No (%)			
Diabetes mellitus	7 (1.9)	6 (1.6)	7 (1.9)
Smokers	121 (32.3)	91 (23.6)	89 (23.9)
Alcohol intake \geq 5 g/day	33 (8.8)	38 (9.9)	48 (12.9)
Educational attainment, No. (%)			
□ Elementary school	149 (39.7)	151 (39.2)	116 (31.1)
Secondary school	186 (49.6)	179 (46.5)	194 (52.0)
Higher education	40 (10.7)	55 (14.3)	63 (16.9) ^L
Characteristic, mean (SD)			
Age, y	38.9 (15.3)	38.7 (14.1)	36.7 (13.1) ^{LM}
Blood pressure, mm Hg ^b			
Systolic	115.6 (11.2)	115.6 (10.7)	116.8 (10.0)
Diastolic	71.3 (8.0)	72.1 (7.6)	73.0 (8.0) ^L
Weight, kg	61.6 (11.2)	63.7 (11.2) ^L	66.4 (12.4) ^{LM}
BMI, kg/m ²	23.6 (4.2)	24.1 (4.1)	25.0 (4.6) ^{LM}
Total cholesterol, mg/dL	208 (49)	208 (47)	200 (44) ^{LM}
24-hour urinary measurements, mean (SD)			
Duration, h:m	23:51 (00:58)	23:49 (00:55)	23:55 (00:56)
Volume, L	1.36 (0.67)	1.52 (0.64) ^L	1.68 (0.67) ^{LM}
Sodium, mmol	94.4 (21.5)	147.4 (14.3) ^L	222.1 (47.2) ^{LM}
Potassium, mmol	51.2 (17.2)	62.9 (21.1) ^L	69.4 (23.4) ^{LM}
Sodium-to-potassium ratio	2.00 (0.76)	2.63 (1.21) ^L	3.56 (1.66) ^{LM}
Creatinine, mmol	8.6 (2.2)	9.6 (2.0) ^L	10.8 (2.5) ^{LM}

Abbreviation: BMI, body mass index, which is calculated as weight in kilograms divided by height in meters squared.

SI conversion factors: To convert millimoles of sodium to grams, multiply by 0.02299; to convert millimoles of potassium to grams, multiply by 0.039098; to convert millimoles of creatinine to grams, multiply by 0.11312; cholesterol from mg/dl to mmol/L, multiply by 0.0259.

^aThis analysis includes the *Hypertension Cohort* (n=2096; see Figure 1 and Table 1).

^bFor the blood pressure determination and diabetes mellitus diagnosis, see the "Methods" section.

P<.05 vs low (L) or middle (M) tertile of 24-hour urinary sodium excretion.

eTable 4. Characteristics of Men in the *Hypertension Cohort*^a by Tertiles of the 24-Hour Urinary Sodium Excretion at Baseline

	24-Hour Urinary Sodium Excretion Tertiles		
	Low (n=318)	Medium (n=328)	High (n=317)
Participant characteristics, No (%)			
Diabetes mellitus	6 (1.9)	8 (2.4)	6 (1.9)
Smokers	120 (37.7)	128 (39.0)	104 (32.8)
Alcohol intake ≥ 5 g/day	112 (35.2)	108 (32.9)	126 (39.8)
Educational attainment, No. (%)			
\leq Elementary school	101 (31.8)	105 (32.0)	57 (18.0)
Secondary school	173 (54.4)	182 (55.5)	204 (64.3)
Higher education	44 (13.8)	41 (12.5)	56 (17.7) ^{LM}
Characteristic, mean (SD)			
Age, y	39.3 (16.0)	40.1 (15.4)	38.2 (13.4)
Blood pressure, mm Hg ^b			
Systolic	121.8 (9.7)	121.8 (8.7)	122.0 (9.3)
Diastolic	74.8 (8.2)	74.0 (7.9)	75.5 (7.7) ^M
Weight, kg	74.0 (12.1)	76.1 (11.1) ^L	78.6 (11.8) ^{LM}
BMI, kg/m ²	24.6 (3.4)	24.9 (3.3)	25.2 (3.6) ^L
Total cholesterol, mg/dL	206 (47)	206 (47)	205 (48)
24-hour urinary measurements, mean (SD)			
Duration, h:m	23:51 (01:11)	23:49 (01:11)	23:51 (01:06)
Volume, L	1.34 (0.61)	1.49 (0.57) ^L	1.75 (0.61) ^{LM}
Sodium, mmol	121.3 (27.9)	185.3 (16.1) ^L	282.2 (56.4) ^{LM}
Potassium, mmol	62.5 (26.3)	73.5 (23.4) ^L	84.1 (28.8) ^{LM}
Sodium-to-potassium ratio	2.19 (0.87)	2.78 (0.97) ^L	3.74 (1.49) ^{LM}
Creatinine, mmol	12.2 (3.1)	14.1 (3.2) ^L	16.1 (3.4) ^{LM}

Abbreviation: BMI, body mass index, which is calculated as weight in kilograms divided by height in meters squared.

SI conversion factors: To convert millimoles of sodium to grams, multiply by 0.02299; to convert millimoles of potassium to grams, multiply by 0.039098; to convert millimoles of creatinine to grams, multiply by 0.11312; cholesterol from mg/dl to mmol/L, multiply by 0.0259.

^aThis analysis includes the *Hypertension Cohort* (n=2096; see Figure 1 and Table 1).

^bFor the blood pressure determination and diabetes mellitus diagnosis, see the "Methods" section.

P<.05 vs low (L) or middle (M) tertile of 24-hour urinary sodium excretion.

eTable 5. Characteristics of the Participants in the <i>Blood Pressure Cohort</i> ^a at Baseline and at Follow-up by Country							
Characteristic			FLEMENGH O Belgium (n=1109)	Pilsen Czech Republic (n=69)	Padova Italy (n=148)	Kraków Poland (n=107)	Novosibirsk Russian Federation (n=66)
Median follow-up, y (IQR)			5.59 (4.87–9.02)	5.74 (5.50–5.87) ^B	6.99 (6.60–7.23)	6.59 (6.34–6.84) ^B	7.69 (6.94–8.17) ^C
Participant characteristics, No. (%)							
	Women		568 (51.2)	42 (60.9)	79 (53.4)	55 (51.4)	42 (63.6) ^B
	Smokers	BL	359 (32.4)	18 (26.1)	39 (26.4)	24 (22.4) ^B	15 (22.7)
		FU	307 (27.7)	14 (20.3)	32 (21.6)	25 (23.4)	16 (24.2)
	Alcohol intake ≥5 g/day	BL	216 (19.5)	28 (40.6) ^B	55 (37.2) ^B	20 (18.7) ^{CI}	26 (39.4) ^{BP}
		FU	345 (31.1)	32 (46.8) ^B	66 (44.6) ^B	30 (28.0) ^{CI}	20 (30.3) ^I
	Contraceptive pill	BL	120 (10.8)	12 (17.4)	15 (10.1)	2 (1.9) ^{BI}	4 (6.1) ^C
		FU	98 (8.8)	9 (13.0)	0 ^{BC}	5 (4.7) ^{CI}	1 (1.5) ^{BC}
	NSAIDs	BL	146 (13.2)	1 (1.5) ^B	11 (7.4) ^B	10 (9.4) ^C	17 (25.8) ^{BCIP}
		FU	105 (9.5)	8 (11.6)	14 (9.5)	9 (8.4)	4 (6.1)
Characteristic, mean (SD)							
	Age, y	BL	47.3 (15.2)	38.4 (12.7) ^B	44.3 (13.2) ^C	38.6 (13.0) ^{BI}	42.2 (13.2) ^B
	BMI, kg/m ²	BL	24.7 (4.0)	24.6 (4.0)	24.3 (3.6)	24.3 (4.3)	23.7 (4.0)
		FU	25.6 (4.2) [‡]	25.4 (4.9) [†]	25.5 (3.9) [‡]	25.2 (4.5)	25.4 (4.6) [‡]
		Change, y	0.12 (0.34)	0.14 (0.35)	0.17 (0.29)	0.14 (0.30)	0.23 (0.36)
Blood pressure, mm Hg ^b							
	Systolic	BL	121.6 (13.0)	116.7 (10.1) ^B	119.9 (12.6)	120.2 (12.3)	115.8 (10.7) ^B
		FU	124.4 (15.1) [‡]	116.7 (10.9) ^B	126.0 (15.3) ^{C‡}	130.0 (14.9) ^{BC}	119.3 (14.8) ^{IP*}
		Change, y	0.22 (2.04)	−0.01 (1.56)	0.87 (1.61) ^C	1.51 (1.80) ^{BC}	0.40 (1.59) ^{IP}
	Diastolic	BL	74.3 (9.0)	74.3 (8.4)	77.2 (8.5) ^B	75.2 (8.7)	73.4 (8.0) ^I
		FU	77.7 (9.4) [‡]	77.7 (7.6) [†]	83.5 (9.2) ^{BC‡}	79.0 (9.6) ^I	77.1 (10.8) ^{I†}
		Change, y	0.40 (1.55)	0.60 (1.45)	0.91 (1.15) ^B	0.60 (1.38)	0.46 (1.32)
24-hour urinary measurements, mean (SD)							
	Duration, h:m	BL	23:58 (00:50)	24:00	22:12	24:06 (00:43) ^I	23:57

				(00:29) ^B	(02:01) ^{BC}		(00:31) ^{CI}
		FU	23:58 (00:52)	23:40 (00:45)	25:19 (01:52) ^{BC}	24:01 (00:08) ^I	23:36 (01:02) ^I
	Volume, L	BL	1.58 (0.67)	1.87 (0.67) ^B	1.27 (0.41) ^{BC}	1.43 (0.57) ^C	1.31 (0.52) ^{BC}
		FU	1.65 (0.73) [†]	2.09 (0.63) ^{B*}	1.72 (0.55) ^{C‡}	1.41 (0.37) ^{BCI}	1.39 (0.48) ^{BCI}
	Sodium, mmol	BL	165.2 (58.5)	180.8 (55.9)	172.8 (57.2)	230.2 (72.6) ^{BCI}	197.5 (72.9) ^{BIP}
		FU	166.4 (61.4)	188.0 (69.1) ^B	169.3 (60.8)	188.9 (68.6) ^{B‡}	186.8 (66.9)
		Change, y	0.057 (11.41)	1.26 (11.10)	−0.43 (9.86)	−6.27 (10.75) ^{BCI}	−1.37 (9.43) ^C
	Potassium, mmol	BL	69.6 (26.5)	58.5 (20.0) ^B	60.4 (22.5) ^B	63.2 (22.2)	59.6 (17.2) ^B
		FU	71.3 (25.8)	65.3 (22.3) [‡]	68.0 (20.7) [‡]	53.3 (16.9) ^{BCI‡}	59.4 (24.7) ^B
		Change, y	0.40 (4.91)	1.26 (4.47)	1.07 (3.32)	−1.39 (3.68) ^{BCI}	−0.020 (3.48)
	Creatinine, mmol	BL	12.0 (3.8)	13.0 (3.5)	10.7 (3.0) ^{BC}	11.9 (3.6)	10.6 (2.8) ^{BC}
		FU	11.8 (4.0)	11.7 (3.8) [‡]	12.5 (3.6) [‡]	12.0 (3.9)	10.6 (3.9) ^I
		Change, y	−0.040 (0.61)	−0.24 (0.49) ^B	0.26 (0.41) ^{BC}	0.0048 (0.51) ^{CI}	0.0039 (0.45) ^I
<p>Abbreviations: BMI, body mass index, which is calculated as weight in kilograms divided by height in meters squared; FLEMENGHO, the Flemish Study on Environment, Genes, and Health Outcomes; IQR, interquartile range; NSAID, nonsteroidal anti-inflammatory drug. BL and FU refer to measurements obtained at baseline and follow-up. In Belgium, BL and FU observations were collected from 1985 until 2004 and from 1990 until 2009; in the other countries, these intervals ranged from 1999 until 2001 and from 2006 until 2008, respectively.</p> <p>SI conversion factors: To convert millimoles of sodium to grams, multiply by 0.02299; to convert millimoles of potassium to grams, multiply by 0.039098; to convert millimoles of creatinine to grams, multiply by 0.11312.</p> <p>^aThis analysis includes the <i>Blood Pressure Cohort</i> ($n=1499$; see Figure 1 and Table 1).</p> <p>^bFor the blood pressure determination, see the "Methods" section.</p> <p>Significance of the paired differences between BL and FU: *$P<.05$, †$P<.01$, ‡$P<.001$. P-values for between-countries differences were adjusted for multiple comparisons (Tukey test): $P<.05$ vs Belgium (B), the Czech Republic (C), Italy (I), Poland (P).</p>							

eTable 6. Causes of Cardiovascular Mortality and Morbidity in the <i>Outcome Cohort</i> .				
		Number of events		
		All (n=3681)	FLEMENGHO (n=2674)	EPOGH (n=1007)
Stroke	Fatal	20	18	2
	Nonfatal	13	13	...
Myocardial infarction	Fatal	19	18	1
	Nonfatal	27	19	8
Acute coronary syndrome	Nonfatal	4	4	...
Ischemic heart disease	Fatal	6	6	...
	Nonfatal	3	3	...
Sudden death	Non-resuscitated	6	6	...
Coronary revascularization	Surgical	20	13	7
	Percutaneous	13	13	...
Heart failure	Fatal	29	29	...
	Nonfatal	43	37	6
Arterial embolism	Fatal	1	1	...
Pulmonary embolism	Fatal	2	2	...
	Nonfatal	9	9	...
Aortic aneurysm	Fatal	1	1	...
	Nonfatal	2	2	...
Pulmonary heart disease	Nonfatal	14	14	...
Abbreviations: EPOGH, the European Project on Genes in Hypertension; FLEMENGHO, the Flemish Study on Environment, Genes, and Health Outcomes. This analysis includes the <i>Outcome Cohort</i> (n=3681; see Figure 1 and Table 1).				

eTable 7. Multivariable-Adjusted Hazard Ratios for Mortality and Cardiovascular Events by Tertiles of the 24-Hour Urinary Sodium Excretion at Baseline in 3194 Participants Younger Than 60 Years.

		24-Hour Urinary Sodium Excretion Tertiles							
		Low (n=1059)		Medium (n=1082)		High (n=1053)			
No. of women		556		573		555			
	Range, mmol	50–129		130–180		181–400			
	Mean (SD), mmol	97.3 (22.7)		153.3 (15.1)		235.1 (51.3)			
No. of men		503		509		498			
	Range, mmol	50–162		163–227		228–400			
	Mean (SD), mmol	122.3 (28.7)		193.2 (17.6)		296.4 (55.2)			
	Total No. of Events	No. of Events	Adjusted HR (95% CI) ^a	No. of Events	Adjusted HR (95% CI) ^a	No. of Events	Adjusted HR (95% CI) ^a	<i>P</i> Value	
Mortality									
	All causes	77	30	0.98 (0.68 to 1.41)	28	1.05 (0.76 to 1.46)	19	0.95 (0.69 to 1.31)	.71
	Cardiovascular	16	8	1.41 (0.70 to 2.83)	7	1.32 (0.67 to 2.58)	3	0.76 (0.39 to 1.49)	.61
	Noncardiovascular	59	22	0.91 (0.59 to 1.38)	21	1.01 (0.69 to 1.46)	16	0.99 (0.68 to 1.44)	.56
Fatal and nonfatal events									
	All cardiovascular	134	53	1.12 (0.86 to 1.46)	45	1.09 (0.84 to 1.41)	36	0.92 (0.71 to 1.19)	.57
	Coronary	60	27	1.35 (0.88 to 2.07)	20	1.09 (0.76 to 1.56)	13	0.92 (0.64 to 1.32)	.14
	Stroke	11	3	0.64 (0.24 to 1.70)	4	1.23 (0.46 to 3.32)	4	0.81 (0.30 to 2.18)	.18

Abbreviations: CI, confidence interval; HR, hazard ratio.

This analysis includes the 3194 participants from the *Outcome Cohort* (see Figure 1 and Table 1), who were younger than 60 years.

^aHRs were computed by deviation from mean coding and express the risk in each tertile of the distribution of 24-hour urinary sodium excretion at baseline compared with the overall risk in the whole group. We applied Cox proportional hazard regression to derive HRs, while adjusting for covariables and accounting for family clusters. All HRs were adjusted for study population, sex and baseline variables: age, body mass index, systolic blood pressure, 24-hour urinary potassium excretion, antihypertensive drug treatment, smoking and drinking alcohol, diabetes, total cholesterol, and educational attainment. Adjustment for diastolic blood pressure or mean arterial pressure instead of systolic blood pressure did not materially alter the findings.

P-values are for linear trend across the tertiles of 24-hour sodium excretion.

eTable 8. Multivariable-Adjusted Hazard Ratios for Mortality and Cardiovascular Events by Tertiles of the 24-Hour Urinary Sodium Excretion at Baseline in 487 Participants 60 Years or Older.

			24-Hour Urinary Sodium Excretion Tertiles						
			Low (n=1059)		Medium (n=1082)		High (n=1053)		
No. of women			85		88		84		
	Range, mmol		50–109		110–155		156–345		
	Mean (SD), mmol		82.9 (16.9)		129.5 (11.5)		203.7 (45.9)		
No. of men			76		79		75		
	Range, mmol		50–138		139–192		193–400		
	Mean (SD), mmol		105.2 (26.8)		164.7 (15.0)		244.0 (51.3)		
		Total No. of Events	No. of Events	Adjusted HR (95% CI) ^a	No. of Events	Adjusted HR (95% CI) ^a	No. of Events	Adjusted HR (95% CI) ^a	<i>P</i> Value
Mortality									
	All causes	142	64	1.26 (0.90 to 1.75)	49	1.05 (0.80 to 1.37)	29	0.96 (0.73 to 1.25)	.14
	Cardiovascular	66	31	1.52 (0.94 to 2.47)	22	1.06 (0.73 to 1.56)	13	0.94 (0.64 to 1.37)	.056
	Noncardiovascular	76	33	1.12 (0.73 to 1.71)	27	1.06 (0.75 to 1.49)	16	0.95 (0.67 to 1.34)	.68
Fatal and nonfatal events									
	All cardiovascular	98	39	1.09 (0.77 to 1.56)	32	0.90 (0.67 to 1.21)	27	1.11 (0.83 to 1.50)	.28
	Coronary	38	16	1.05 (0.57 to 1.93)	11	0.75 (0.46 to 1.24)	11	1.33 (0.80 to 2.20)	.40
	Stroke	22	9	0.85 (0.42 to 1.75)	6	0.73 (0.41 to 1.32)	7	1.36 (0.76 to 2.45)	.90

Abbreviations: CI, confidence interval; HR, hazard ratio.

This analysis includes the 487 participants from the *Outcome Cohort* (see Figure 1 and Table 1), who were 60 years or older.

^aHRs were computed by deviation from mean coding and express the risk in each tertile of the distribution of 24-hour urinary sodium excretion at baseline compared with the overall risk in the whole group. We applied Cox proportional hazard regression to derive HRs, while adjusting for covariables and accounting for family clusters. All HRs were adjusted for study population, sex and baseline variables: age, body mass index, systolic blood pressure, 24-hour urinary potassium excretion, antihypertensive drug treatment, smoking and drinking alcohol, diabetes, total cholesterol, and educational attainment. Adjustment for diastolic blood pressure or mean arterial pressure instead of systolic blood pressure did not materially alter the findings.

P-values are for linear trend across the tertiles of 24-hour sodium excretion.

eTable 9. Multivariable-Adjusted Hazard Ratios for Mortality and Cardiovascular Events by Tertiles of the 24-Hour Urinary Sodium Excretion at Baseline Excluding Any Adjustment for Blood Pressure

		24-Hour Urinary Sodium Excretion Tertiles						
		Low (n=1220)		Medium (n=1250)		High (n=1211)		
No. of women		645		658		638		
	Range, mmol	50–126		127–177		178–400		
	Mean (SD), mmol	95.1 (22.0)		150.2 (15.0)		231.7 (50.9)		
No. of men		575		592		573		
	Range, mmol	50–158		159–221		222–400		
	Mean (SD), mmol	120.1 (28.4)		188.8 (17.6)		290.5 (56.2)		
	Total No. of Events	No. of Events	Adjusted HR (95% CI) ^a	No. of Events	Adjusted HR (95% CI) ^a	No. of Events	Adjusted HR (95% CI) ^a	<i>P</i> Value
Mortality								
All causes	219	118	1.12 (0.86 to 1.45)	64	0.93 (0.74 to 1.16)	37	1.08 (0.87 to 1.35)	.10
Cardiovascular	84	50	1.41 (0.94 to 2.12)	24	0.98 (0.69 to 1.40)	10	1.02 (0.71 to 1.45)	.034
Noncardiovascular	135	68	0.99 (0.71 to 1.36)	40	0.91 (0.68 to 1.20)	27	1.10 (0.83 to 1.47)	.64
Fatal and nonfatal events								
All cardiovascular	232	100	1.12 (0.90 to 1.41)	79	1.09 (0.89 to 1.34)	53	0.92 (0.74 to 1.13)	.54
Coronary	98	45	1.41 (0.99 to 2.01)	34	1.15 (0.87 to 1.52)	19	0.87 (0.66 to 1.15)	.093
Stroke	33	13	1.05 (0.56 to 1.96)	13	1.28 (0.75 to 2.17)	7	0.78 (0.46 to 1.33)	.61

Abbreviations: CI, confidence interval; HR, hazard ratio.

This analysis includes the *Outcome Cohort* (n=3681; see Figure 1 and Table 1).

^aHRs were computed by deviation from mean coding and express the risk in each tertile of the distribution of 24-hour urinary sodium excretion at baseline compared with the overall risk in the whole group. We applied Cox proportional hazard regression to derive HRs, while adjusting for covariables and accounting for family clusters. All HRs were adjusted for study population, sex and baseline variables: age, body mass index, 24-hour urinary potassium excretion, antihypertensive drug treatment, smoking and drinking alcohol, diabetes, total cholesterol, and educational attainment.

P-values are for linear trend across the tertiles of 24-hour sodium excretion.

eTable 10. Multivariable-Adjusted Hazard Ratios for Mortality and Cardiovascular Events by Tertiles of the 24-Hour Urinary Sodium-to-Potassium Ratio at Baseline.

		24-Hour Urinary Sodium Excretion Tertiles							
		Low (n=1241)	Medium (n=1232)		High (n=1208)				
No. of women		653	649		639				
	Range, mmol	0.8–2.1	2.2–3.1		3.2–6.0				
	Mean (SD), mmol	1.64 (0.36)	2.59 (0.27)		4.15 (0.86)				
No. of men		588	583		569				
	Range, mmol	0.8–2.3	2.4–3.3		3.4–6.0				
	Mean (SD), mmol	1.75 (0.41)	2.80 (0.28)		4.37 (0.84)				
	Total No. of Events	No. of Events	Adjusted HR (95% CI) ^a	No. of Events	Adjusted HR (95% CI) ^a	No. of Events	Adjusted HR (95% CI) ^a	<i>P</i> Value	
Mortality									
	All causes	219	94	1.25 (1.00 to 1.57)	78	1.09 (0.90 to 1.33)	47	0.91 (0.75 to 1.12)	.063
	Cardiovascular	84	41	1.61 (1.06 to 2.45)*	28	1.13 (0.79 to 1.61)	15	0.89 (0.62 to 1.27)	.0069
	Noncardiovascular	135	53	1.10 (0.85 to 1.44)	50	1.10 (0.86 to 1.40)	32	0.91 (0.71 to 1.16)	.72
Fatal and nonfatal events									
	All cardiovascular	232	93	1.26 (1.00 to 1.52)	89	1.09 (0.89 to 1.33)	50	0.92 (0.75 to 1.12)	.066
	Coronary	98	42	1.31 (0.94 to 1.84)	33	0.97 (0.73 to 1.30)	23	1.03 (0.77 to 1.37)	.035
	Stroke	33	15	1.32 (0.73 to 2.41)	12	0.99 (0.60 to 1.65)	6	1.01 (0.61 to 1.66)	.25

Abbreviations: CI, confidence interval; HR, hazard ratio.

This analysis includes the *Outcome Cohort* (n=3681; see Figure 1 and Table 1).

^aHRs were computed by deviation from mean coding and express the risk in each tertile of the distribution of the 24-hour urinary sodium-to-potassium ratio at baseline compared with the overall risk in the whole group. We applied Cox proportional hazard regression to derive HRs, while adjusting for covariables and accounting for family clusters. All HRs were adjusted for study population, sex and baseline variables: age, body mass index, systolic blood pressure, antihypertensive drug treatment, smoking and drinking alcohol, diabetes, total cholesterol, and educational attainment. Adjustment for diastolic blood pressure or mean arterial pressure instead of systolic blood pressure did not materially alter the findings.

P-values are for linear trend across the tertiles of the 24-hour sodium-to-potassium ratio.

Significance of the HRs: **P*=.025

eTable 11. Multivariable-Adjusted Hazard Ratios for Cardiovascular Mortality by Tertiles of the 24-Hour Urinary Sodium Excretion at Baseline with Censoring of Follow-up at 6, 9, 12, 15, 18 and 21 Years.

		24-Hour Urinary Sodium Excretion Tertiles						
		Low (n=1220)		Medium (n=1250)		High (n=1211)		
		No. of Events	Adjusted HR (95% CI) ^a	No. of Events	Adjusted HR (95% CI) ^a	No. of Events	Adjusted HR (95% CI) ^a	<i>P</i> Value
Model censored at								
	6 years	16	1.65 (0.85 to 3.22)	9	1.91 (0.90 to 4.08)	4	0.52 (0.25 to 1.12)	.80
	9 years	25	1.20 (0.54 to 2.63)	13	1.25 (0.57 to 2.76)	8	0.80 (0.36 to 1.76)	.98
	12 years	29	1.61 (0.77 to 3.35)	18	1.56 (0.85 to 2.87)	8	0.64 (0.35 to 1.18)	.69
	15 years	36	1.68 (0.88 to 3.20)	19	1.39 (0.84 to 2.32)	9	0.72 (0.43 to 1.19)	.33
	18 years	42	1.66 (1.00 to 2.75)*	21	1.16 (0.77 to 1.74)	9	0.87 (0.58 to 1.30)	.049
	21 years	50	1.56 (1.02 to 2.36)*	24	1.05 (0.72 to 1.53)	10	0.95 (0.66 to 1.38)	.020

Abbreviations: CI, confidence interval; HR, hazard ratio.

This analysis includes the *Outcome Cohort* (n=3681; see Figure 1 and Table 1).

^aHazard ratios were computed by deviation from mean coding and express the risk in each tertile of the distribution of 24-hour urinary sodium excretion at baseline compared with the overall risk in the whole group. We applied Cox proportional hazard regression to derive HRs, while adjusting for covariables and accounting for family clusters. All HRs were adjusted for study population, sex and baseline variables: age, body mass index, systolic blood pressure, 24-hour urinary potassium excretion, antihypertensive drug treatment, smoking and drinking alcohol, diabetes, total cholesterol, and educational attainment.

Adjustment for diastolic blood pressure or mean arterial pressure instead of systolic blood pressure did not materially alter the findings.

P-values are for linear trend across the tertiles of 24-hour sodium excretion.

Significance of the HRs: **P* < .048

eTable 12. Multivariable-Adjusted Hazard Ratios for Incidence of Hypertension by Tertiles of the 24-Hour Urinary Sodium Excretion at Baseline.

		24-Hour Urinary Sodium Excretion Tertiles						
		Low (n=693)		Medium (n=713)		High (n=690)		
No. of women		375		385		373		
	Range, mmol	50–124		125–173		174–400		
	Mean (SD), mmol	94.7 (21.5)		147.4 (14.3)		222.1 (47.2)		
No. of men		318		328		317		
	Range, mmol	50–157		158–214		215–400		
	Mean (SD), mmol	121.3 (27.9)		185.3 (16.1)		282.2 (56.4)		
		No. of Events	Adjusted HR (95% CI) ^a	No. of Events	Adjusted HR (95% CI) ^a	No. of Events	Adjusted HR (95% CI) ^a	<i>P</i> Value
Study population								
	FLEMENGHO (434)	163	1.00 (0.84 to 1.19)	155	1.00 (0.86 to 1.16)	116	1.00 (0.86 to 1.16)	.97
	EPOGH (118)	24	0.98 (0.76 to 1.27)	35	1.20 (0.89 to 1.62)	59	0.83 (0.62 to 1.12)	.55
	All (552)	187	1.00 (0.87 to 1.16)	190	1.02 (0.89 to 1.16)	175	0.98 (0.86 to 1.12)	.93

Abbreviations: CI, confidence interval; EPOGH, the European Project on Genes and Hypertension; FLEMENGHO, Flemish Study on Environment, Genes and Health Outcomes; HR, hazard ratio.

This analysis includes the *Hypertension Cohort* ($n=2096$; see Figure 1 and Table 1). At baseline, all subjects belonging to the *Hypertension Cohort* were untreated. Hypertension during follow-up was a blood pressure of 140 mm Hg systolic or 90 mm Hg diastolic or more or use of antihypertensive drugs.

^aHazard ratios were computed by deviation from mean coding and express the risk in each tertile of the distribution of 24-hour urinary sodium excretion at baseline compared with the overall risk in the whole group. We applied Cox proportional hazard regression to derive HRs, while adjusting for covariables and accounting for family clusters. All HRs were adjusted for study population, sex and baseline variables: age, body mass index, systolic blood pressure, 24-hour urinary potassium excretion, drinking alcohol, and educational attainment. HRs in all participants combined were additionally adjusted for study population.

P-values are for linear trend across the tertiles of 24-hour sodium excretion.

eTable 13. Multivariable-Adjusted Cross-Sectional Associations Between Blood Pressure and 24-Hour Urinary Sodium by Study Population and Study Phase^a

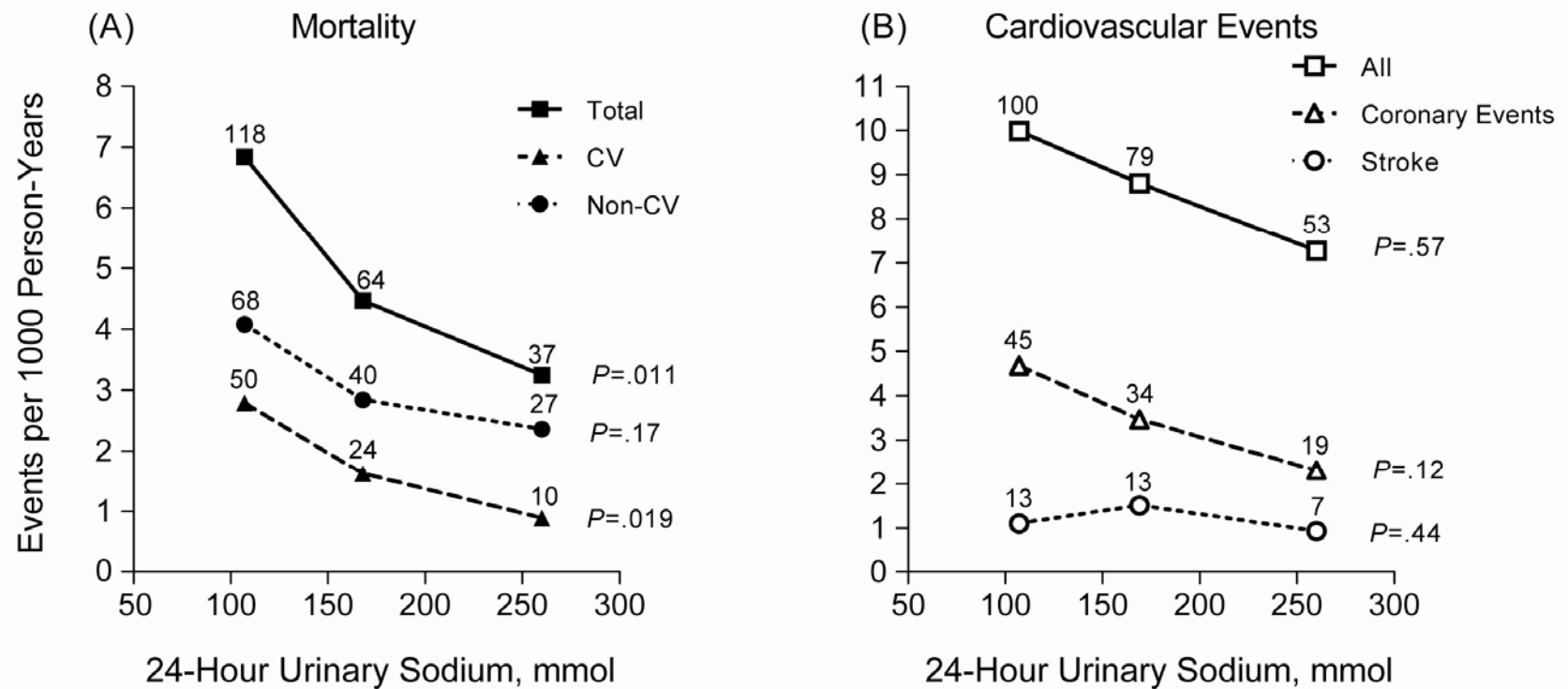
Study Population		Baseline		Follow-Up	
		Estimates (95% CI) ^b	<i>P</i>	Estimates (95% CI) ^b	<i>P</i>
Systolic Pressure					
	FLEMENGHO	0.525 (−0.793 to 1.843)	.43	2.002 (0.487 to 3.517)	.01
	EPOGH	2.109 (0.282 to 3.937)	.02	−0.019 (−2.210 to 2.201)	.99
	All	1.140 (0.055 to 2.224)	.04	1.459 (0.208 to 2.710)	.02
Diastolic Pressure					
	FLEMENGHO	0.534 (−0.389 to 1.456)	.25	0.258 (−0.734 to 1.251)	.61
	EPOGH	1.004 (−0.339 to 2.347)	.14	−0.324 (−1.865 to 1.217)	.68
	All	0.739 (−0.025 to 1.500)	.16	0.090 (−0.724 to 0.942)	.80

Abbreviations: CI, confidence interval; EPOGH, the European Project on Genes in Hypertension; FLEMENGHO is the Flemish Study on Environment, Genes, and Health Outcomes.

^aReasons for exclusion from analysis are explained in the "Methods" section.

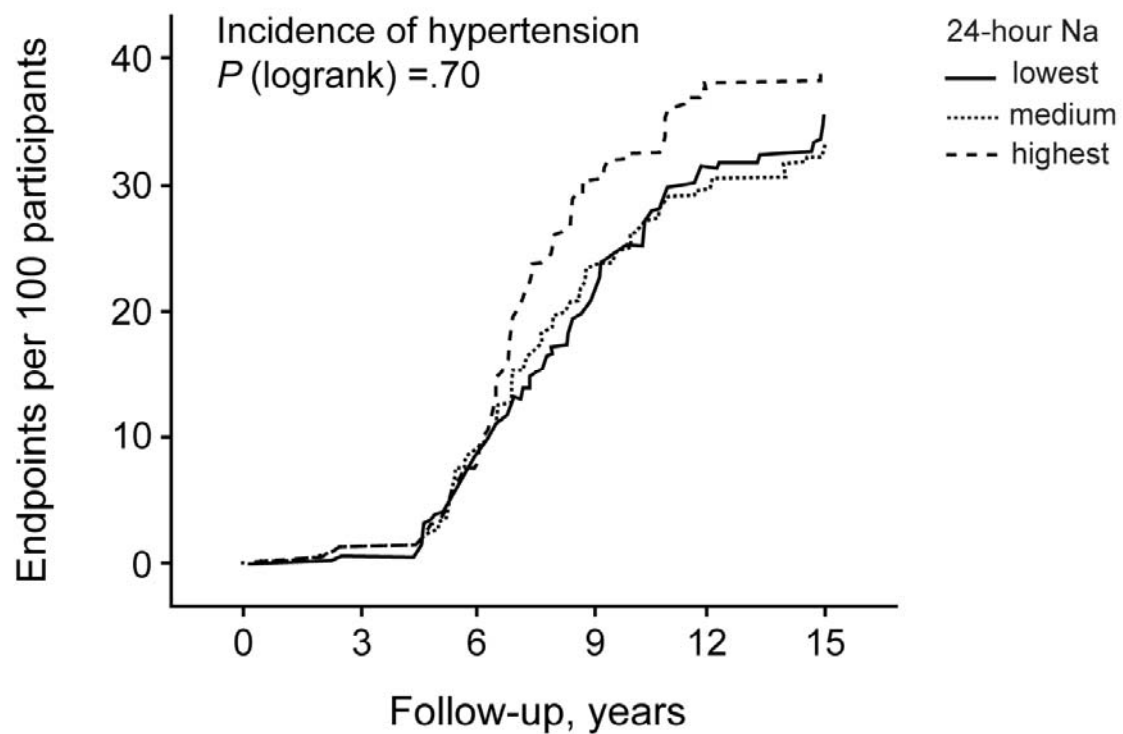
^bEstimates and 95% CIs express the difference in blood pressure associated with a 100 mmol increase in 24-hour urinary sodium excretion. All parameter estimates were adjusted for sex, age, body mass index, alcohol intake (0,1), 24-hour urinary potassium excretion, use of female sex hormones (0,1), and nonsteroidal anti-inflammatory drugs (0,1), and account for family clusters. Estimates in all participants combined were additionally adjusted for study population.

eFigure 1. Incidence of Mortality and All Cardiovascular Events



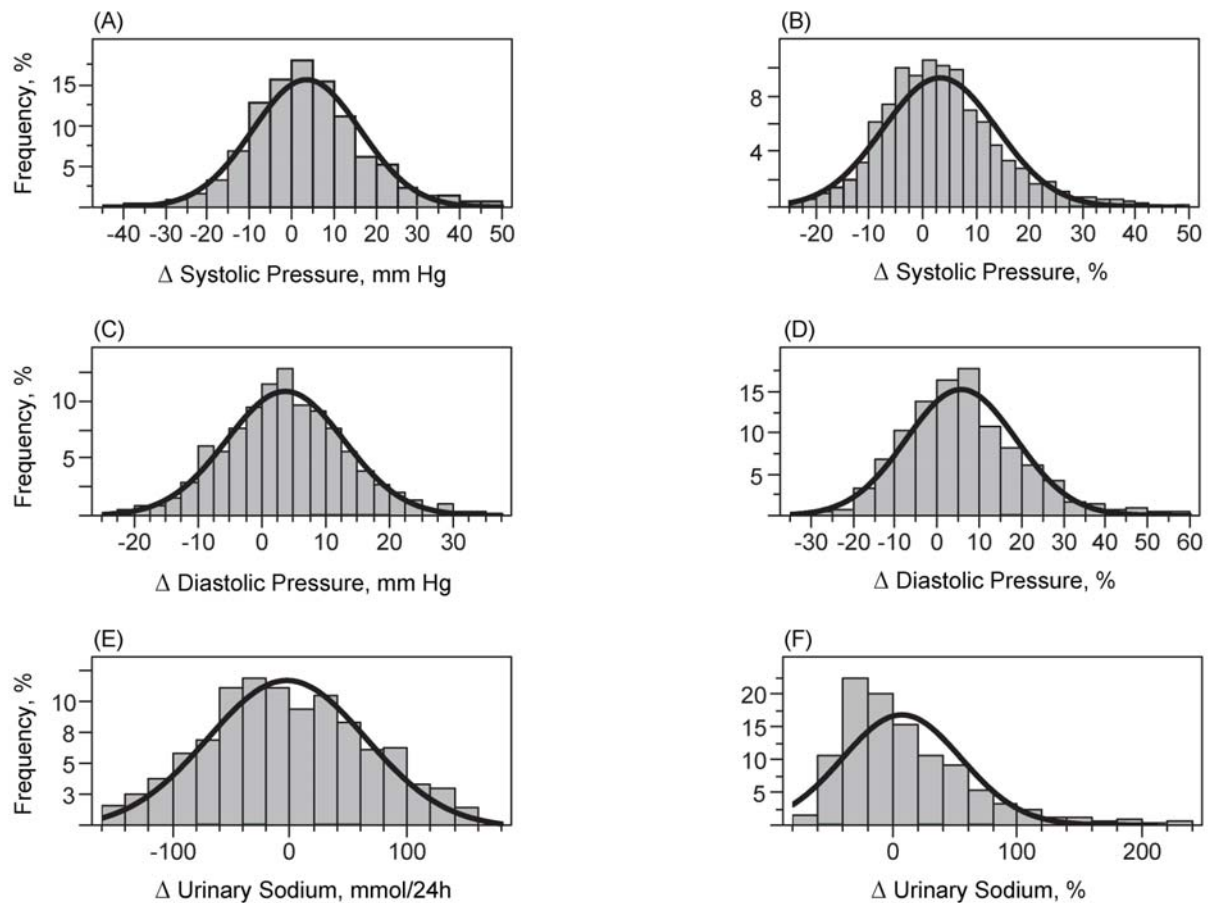
Incidence of mortality (A) and cardiovascular events (B) by tertiles of the distributions of the 24-hour urinary sodium excretion at baseline. This analysis includes the *Outcome Cohort* ($n=3681$; see Figure 1 and Table 1). Incidence rates were standardized for study population, sex, and age by the direct method. The number of events contributing to the rates is presented. CV and Non-CV indicate cardiovascular and noncardiovascular mortality, respectively. The data markers are centered to the means of the 24-hour urinary sodium excretion in each tertile of the distribution. For the mean and range of the 24-hour sodium excretion in each tertile, see Table 2. The P -values are for linear trend across the tertiles of the 24-hour sodium excretion and were computed using Cox proportional regression models with study population, sex and age at baseline as covariables.

eFigure 2. Kaplan-Meier Estimates for the Incidence of Hypertension by Tertiles of the 24-Hour Urinary Sodium Excretion at Baseline



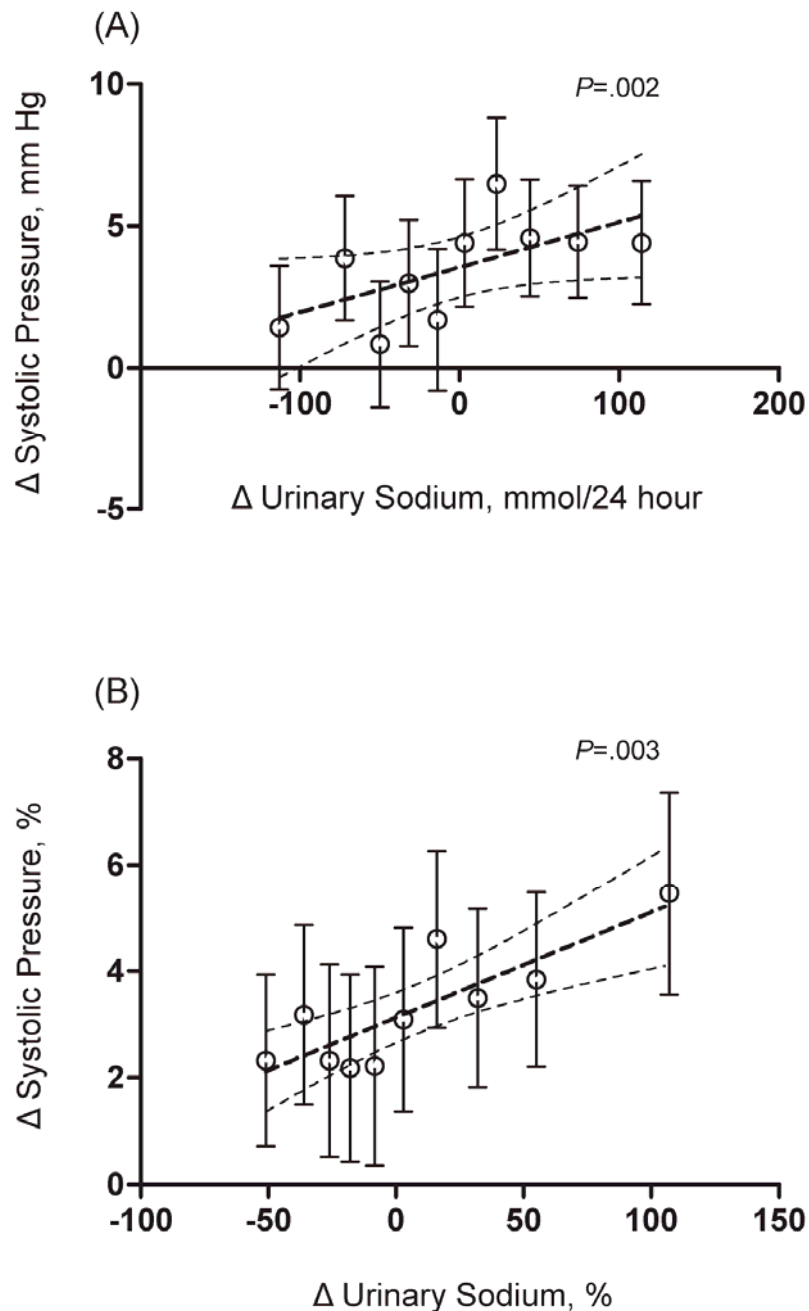
This analysis includes the *Hypertension Cohort* ($n=2096$; see Figure 1 and Table 1). Tertiles of the 24-hour urinary sodium excretion are sex-specific based on baseline measurements. For the mean and range of the 24-hour sodium excretion in each tertile, see eTable 12.

eFigure 3. Distribution of the Absolute (A, C, E) and Relative (B, D, F) Changes in Systolic Blood Pressure (A, B), Diastolic Blood Pressure (C, D), and 24-hour Urinary Sodium Excretion (E, F) in 1499 Participants of the *Blood Pressure Cohort* Followed Up for a Median of 6.1 Years



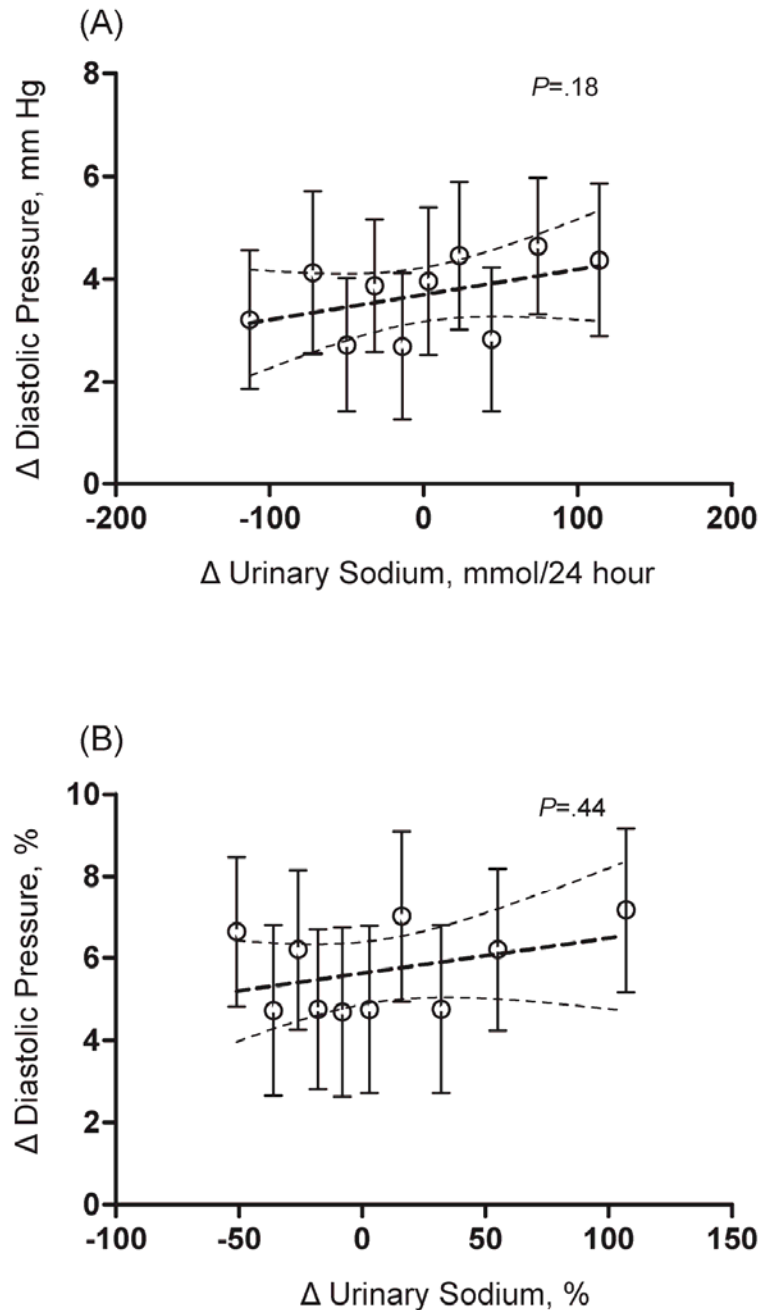
Distributions are represented by frequencies for given intervals and by a continuous line, which was fitted by means of the distribution density modeling software available in the SAS JMP add-on, version 8.0. All distributions were positively skewed ($\alpha < 0.08$) and departed from normality (Shapiro-Wilk statistic $\alpha < 0.92$; $P < .0001$).

eFigure 4. Change in Systolic Blood Pressure During Follow-Up By Deciles of the Change in the 24-Hour Urinary Sodium Excretion in the *Blood Pressure Cohort* (n=1499)



The data markers are centered on the means in each decile. The analyses were adjusted for study population, sex, baseline values of and changes in: age, body mass index, alcohol intake (stopping, no change and starting coded as -1, 0,1), 24-hour urinary potassium excretion, use of female sex hormones (-1, 0,1), and non-steroidal anti-inflammatory drugs (-1, 0,1), and account for family clusters. Changes are expressed in absolute units (A) or as percentage changes (B). The P-values are for linear trend. Dotted lines represent the regression line and the 95% confidence interval for the changes in systolic blood pressure across deciles. Mean values and limits of the changes in the 24 hour urinary sodium excretion from the bottom to top decile: Panel A: -113 (-159 to -90), -72 (-89 to -60), -50 (-59 to -42), -32 (-41 to -24), -14 (-23 to -5), +3 (-4 to +13), +23 (+14 to +33), +44 (+34 to +57), +74 (+58 to +90), +114 (+91 to +159); Panel B: -51 (-72 to -43), -36 (-42 to -32), -26 (-31 to -23), -18 (-22 to -14), -8 (-13 to -4), +3 (-3 to +9), +16 (+9 to +22), +32 (+23 to +42), +55 (+43 to +73), +107 (+74 to +230).

eFigure 5. Change in Diastolic Blood Pressure During Follow-Up by Deciles of the Change in 24-Hour Urinary Sodium Excretion in the *Blood Pressure Cohort* (n=1499).



The data markers are centered to the means in each decile. Changes are expressed in absolute units (A) or as percentage changes (B). The P -values are for linear trend. Dotted lines represent the regression line and 95% confidence interval for the changes in diastolic blood pressure across deciles. For adjustments and range of deciles, see eFigure 4.

FLEMENGHO and EPOGH Investigators

Belgium (Leuven) – R. Fagard, L. Thijs, Y. Jin, T. Kuznetsova, Y. Liu, T. Richart, L. Thijs, and J.A. Staessen; *Czech Republic (Pilsen and Prague)* – O. Beran, M. Dolejšová, J. Filipovský, L. Golán, T. Grus, G. Grusová, M. Jachymová, J. Seidlerová, Z. Marecková, J. Peleška, and V. Svobodova; *Germany (Münster)* – E. Brand and S.M. Brand; *Italy (Padova)* – E. Casiglia and V. Tikhonoff; *Poland (Kraków)* – M. Cwynar, J. Gąsowski, T. Grodzicki, K. Kawecka-Jaszcz, M. Kloch-Badełek, M. Loster, A. Olszanecka, A. Sałakowski, K. Stolarz-Skrzypek, B. Wizner, and W. Wojciechowska; *Poland (Gdańsk)* – K. Kunicka, K. Narkiewicz, W. Sakiewicz, E. Świerblewska, and M. Wójtowicz; *Romania (Bucharest)* – S. Babeanu, D. Jianu, C. Sandu, D. State, and M. Udrea; *Russian Federation (Novosibirsk)* – T. Kuznetsova, S. Malyutina, Y. Nikitin, E. Pello, A. Ryabikov, and M. Voevoda.

Project Coordinator – J.A. Staessen; ***Scientific Coordinator*** – K. Kawecka-Jaszcz; ***Steering Committee*** – E. Casiglia, J. Filipovský, K. Kawecka-Jaszcz, Y. Nikitin, and J.A. Staessen; ***Data Management Committee*** – T. Kuznetsova, L. Thijs, J.A. Staessen, K. Stolarz-Skrzypek, and V. Tikhonoff; ***Advisory Committee on Molecular Biology*** – G. Bianchi (Università Vita Salute, Milano, Italy), E. Brand, S.M. Brand, and H.A. Struijker-Boudier (Cardiovascular Research Institute Maastricht, Maastricht University, The Netherlands).