

This discussion paper is/has been under review for the journal Hydrology and Earth System Sciences (HESS). Please refer to the corresponding final paper in HESS if available.

Climate change impact on water resource extremes in a headwater region of the Tarim basin in China

T. Liu¹, P. Willems¹, X. L. Pan², An. M. Bao², X. Chen², F. Veroustraete³, and Q. H. Dong³

¹Katholieke Universiteit Leuven, Department of Civil Engineering, Kasteelpark Arenberg 40, 3001 Leuven, Belgium

²Xinjiang Institute of Ecology and Geography, Chinese Academy of Sciences, China

³Flemish Institute for Technological Research (VITO), Belgium

Received: 4 July 2011 – Accepted: 5 July 2011 – Published: 11 July 2011

Correspondence to: P. Willems (patrick.willems@bwk.kuleuven.be)

Published by Copernicus Publications on behalf of the European Geosciences Union.

HESSD

8, 6593–6637, 2011

**Climate change
impact on water
resource extremes**

T. Liu et al.

Title Page

Abstract

Introduction

Conclusions

References

Tables

Figures

◀

▶

◀

▶

Back

Close

Full Screen / Esc

Printer-friendly Version

Interactive Discussion



Abstract

The Tarim river basin in China is a huge inland arid basin, which is expected to be highly vulnerable to climatic changes, given that most water resources originate from the upper mountainous headwater regions. This paper focuses on one of these headwaters: the Kaidu river subbasin. The climate change impact on the surface and ground water resources of that basin and more specifically on the hydrological extremes were studied by using both lumped and spatially distributed hydrological models, after simulation of the IPCC SRES greenhouse gas scenarios till the 2050s. The models include processes of snow and glacier melting. The climate change signals were extracted from the grid-based results of general circulation models (GCMs) and applied on the station based observed historical data using a perturbation approach. For precipitation, the time series perturbation involves both a wet-day frequency perturbation and a quantile perturbation to the wet-day rainfall intensities. For temperature and potential evapotranspiration, the climate change signals only involve quantile based changes. The perturbed series were input into the hydrological models and the impacts on the surface and ground water resources studied. The range of impact results (after considering 36 GCM runs) were summarized in high, mean and low results. It was found that due to increasing precipitation in winter, snow accumulation increases in the upper mountainous areas. Due to temperature rise, snow melting rates increase and the snow melting periods are pushed forward in time. Although the qualitative impact results are highly consistent among the different GCM runs considered, the precise quantitative impact results varied significantly depending on the GCM run and the hydrological model.

1 Introduction

Because the ecological situation of the Tarim River basin in China seriously declined since the early 1950's caused by over-consumption of irrigation water and

HESSD

8, 6593–6637, 2011

Climate change impact on water resource extremes

T. Liu et al.

Title Page

Abstract

Introduction

Conclusions

References

Tables

Figures

◀

▶

◀

▶

Back

Close

Full Screen / Esc

Printer-friendly Version

Interactive Discussion



unreasonable hydrological conditions (Han and Luo, 2010; Tong, Wu and Wang, 2006), many hydrological studies have been done to properly understand the processes of that watershed, to restore the ecological system and to support the more sustainable development of the basin's water resources (Huang et al., 2010; Jiang, Chen and Bao, 2005; Liu, Bao and Chen, 2006; Zhang et al., 2007). In the mean time, the global climate is changing due to increasing greenhouse gas emissions. Recent research on historical trends of hydro-climatic variables based on historical measurement records confirmed that temperature at different climate stations of the Tarim River basin increased consistently with about 1 degree in the past 50 yr (Chen et al., 2007, 2008; Li et al., 2003; Shi et al., 2006; Wang et al., 2003). The precipitation tends to have increasing trends since the 1970s and the total water resources are slightly increasing. Some authors reveal that the shrinking of the glacier areas due to climate change in the past decades is the main cause (Jiang and Xia, 2007; Li and Williams, 2008; Li et al., 2007; Xu et al., 2007). The impacts of climate change on the hydrologic systems have already been observed and further changes are expected. Hereby, there is the demand to detect the possible impacts of climate change on water resources at the regional scale to provide important scientific information in support of the basin's water resources management. The future availability of water resources will among other factors, depend on the future greenhouse gas (GHG) emissions.

This study quantified the impact of scenarios on future changes in GHG emissions on the surface and ground water resources in one of the most important headwater regions of the Tarim river basin: the Kaidu river basin. Use is made of two hydrological models developed for the basin in previous studies (Liu et al., 2011; Liu and Willems, 2011): a lumped conceptual model (VHM) and a more detailed physically based and spatially distributed model (MIKE-SHE). The strong difference in model structure between these models allowed studying of the sensitivity the climate change impact results on the way the hydrological system of the Kaidu basin has been conceptualized.

The climate change signal was obtained for precipitation and temperature for the period 2046-2065 from simulations with general circulation models (GCMs). All GCM

Climate change impact on water resource extremes

T. Liu et al.

Title Page

Abstract

Introduction

Conclusions

References

Tables

Figures



Back

Close

Full Screen / Esc

Printer-friendly Version

Interactive Discussion



runs available for the study region in the AR4 Archive of the IPCC were considered. These are 36 runs obtained based on the IPCC SRES greenhouse gas emission scenarios A1B, A2 and B1 (Nakicenovic, 2000). The observed data for the period 1979–1998 at the single meteorological station site were considered as the baseline data for the climate change impact analysis. An advanced perturbation technique was applied to transfer the climate change signals from the grid-based GCMs to the point-based meteorological station data series.

This paper is organized as follows: Sect. 2 gives a brief description of the study area; Sect. 3 summarized the hydro-climatic and hydrometric data considered; Sect. 4 gives a description of the two hydrological models considered; Sect. 5 describes the climate change signals obtained from the GCM runs and the downscaling method applied; where after the climate change impact results based on the hydrological models are reported and discussed in Section 6; and final conclusions obtained in Sect. 7.

2 Study area

The Kaidu river basin is located in the upper region of the Tarim river basin in China in the area ranging from 82°58′ to 86°55′ E longitudes and from 41°47′ to 43°21′ N latitudes (Fig. 1). It has a complex topography including grassland, marsh and surrounding mountainous alpine areas. The basin area is around 31 750 km². In that area, the elevation of the Kaidu river basin ranges from 5298 m down to 1905 m.

The Kaidu subbasin area contains one meteorological station (at BYBLK) and two flow gauging stations (at BYBLK and DSK). The BYBLK meteorological and flow gauging stations are located in the upper mountainous region at 2465 m elevation. The DSK flow gauging station is located downstream in the basin. Based on the available observation period (1953 ~ 2006) at BYBLK, 270 mm of average annual precipitation was observed. The highest and lowest daily average temperatures are respectively 18.8 °C and –42.6 °C. The frozen period lasted (on average) for approximately 180 days/year in the mountainous area and 140 days/year in the grassland area.

**Climate change
impact on water
resource extremes**

T. Liu et al.

Title Page

Abstract

Introduction

Conclusions

References

Tables

Figures



Back

Close

Full Screen / Esc

Printer-friendly Version

Interactive Discussion



Climate change impact on water resource extremes

T. Liu et al.

Title Page

Abstract

Introduction

Conclusions

References

Tables

Figures

◀

▶

◀

▶

Back

Close

Full Screen / Esc

Printer-friendly Version

Interactive Discussion



In support of the climate change impact investigations, GCM simulation results were extracted from the database of the World Climate Research Programme's (WCRP) Coupled Model Intercomparison Project phase 3 (CMIP3). Scenario runs from 2046 to 2065 and control runs from 1979 to 1998 were used. Both types of runs have a standard length of 20 years. The control runs are climate simulation results for the end of the 20th century (20CM3) and were used in this study to evaluate the performance of the GCM simulations. The simulations use the A2, A1B and B1 IPCC SRES GHG emission scenarios. In total, 36 runs with 18 different GCMs were available for the study region. The spatial resolutions of these GCMs range from 1.4 to 5 degrees, which means that only 4 ~ 64 grid points cover the study area depending on the GCM's resolution.

Daily precipitation and maximum and minimum surface temperature results were directly obtained from the GCM outputs. The hydrological models, however, also require data on potential evapotranspiration (PET). This PET was calculated from the daily maximum and minimum surface temperature values by the Modified FAO Penman Eq. (1). More advanced methods exist for the estimation of PET, but these require data on additional variables like relative humidity, wind speed, number of sunshine hours, etc. In this study only temperature is used to calculate the PET for two reasons: one reason is that the additional variables typically have higher uncertainties in the GCM outputs; the second reason is that long-term historical series were for the BYBLK meteorological station only available for temperature.

$$ET_o = \frac{0.408\Delta(R_n - G) + \gamma \frac{900}{T+273} u_2 (e_s - e_a)}{\Delta + \gamma(1 + 0.34u_2)} \quad (1)$$

where:

- ET_o : reference evapotranspiration [mm day^{-1}];
- R_n : net radiation at the surface [$\text{MJ m}^{-2} \text{day}^{-1}$];
- G : soil heat flux density [$\text{MJ m}^{-2} \text{day}^{-1}$];

Climate change impact on water resource extremes

T. Liu et al.

Title Page

Abstract

Introduction

Conclusions

References

Tables

Figures

◀

▶

◀

▶

Back

Close

Full Screen / Esc

Printer-friendly Version

Interactive Discussion



- T : mean daily air temperature at 2 m height [$^{\circ}\text{C}$];
 u_2 : wind speed at 2 m height [m s^{-1}];
 e_s : saturation vapour pressure [kPa];
 e_a : actual vapour pressure [kPa];
 $e_s - e_a$: saturation vapour pressure deficit [kPa];
 Δ : slope vapour pressure curve [$\text{kPa } ^{\circ}\text{C}^{-1}$];
 γ : psychrometric constant [$\text{kPa } ^{\circ}\text{C}^{-1}$].

The R_n net radiation at the surface was obtained from the FAO manual (Allen et al., 1998), u_2 was taken equal to the yearly average wind velocity, e_s was calculated as the mean between the saturation vapour pressure at both the daily maximum and minimum air temperature by Eq. (2), Δ based on mean temperature (Eq. 3) and e_a based on the minimum temperature (Eq. 4). The constant γ was derived in function of the altitude (Eq. 5). Hereby, the entire equation could be simplified with only two variables: maximum and minimum surface temperature.

$$e_s = \frac{e^o(T_{\max}) + e^o(T_{\min})}{2} \quad (2)$$

$$e_a = e^o(T_{\text{dew}}) = 0.6108 \exp \left[\frac{17.27T_{\text{dew}}}{T_{\text{dew}} + 237.3} \right] \quad (3)$$

$$\Delta = \frac{4098 \left[0.618 \exp \left(\frac{17.25T}{T + 237.3} \right) \right]}{(T + 237.3)^2} \quad (4)$$

$$\gamma = 0.000655P = 0.000655 \left(101.3 \left(\frac{293 - 0.0065z}{293} \right)^{5.26} \right) \quad (5)$$

where z [m] is the elevation above sea level.

4 Hydrological models

4.1 Lumped conceptual model

The lumped conceptual model has been built (model equations identified) and its parameters calibrated using a data-based approach. It starts from a generalized lumped conceptual model structure which is detailed in a step-wise way, using information that is extracted from the available meteorological and flow data records by means of a number of time series techniques (Willems, 2009; 2010). These includes the separation of the river flow series in subflows, the splitting of the flow series in nearly independent quick and slow flow hydrograph periods, and the extraction of nearly independent peak and low flows. The final model structure obtained is shown in Fig. 3. The precipitation contributes to the soil storage, baseflow, interflow and overland runoff subflows respectively. Soil storage is emptied by evaporation and recharged by the precipitation, where the recharge speed is determined by the soil moisture status of the previous time step. Subsequently, precipitation contributes to the overland flow and interflow according to the soil moisture status and/or precipitation intensity. The baseflow is the total precipitation residual of soil water storage, overland flow and interflow. Furthermore, the surface discharge is also recharged by the seasonal snow melting in spring and the permanent glacier melting in summer. The temperature is the only meteorological variable considered to quantify the thermal input which controls the melting. The melted water contributes to the different runoff subflows as rainfall does. More details on the lumped conceptual model and its identification and calibration process are provided by Liu and Willems (2011).

The Nash-Sutcliffe model efficiency coefficient (EF; Nash and Sutcliffe, 1970) of the calibrated lumped conceptual model is 0.49 for the daily runoff flows at BYBLK river gauging station and 0.629 at DSK station. For the validation period, the EF is 0.44 at BYBLK station and 0.767 at DSK station.

HESSD

8, 6593–6637, 2011

Climate change impact on water resource extremes

T. Liu et al.

Title Page

Abstract

Introduction

Conclusions

References

Tables

Figures



Back

Close

Full Screen / Esc

Printer-friendly Version

Interactive Discussion



4.2 Spatially distributed model

The more detailed and more physically based spatially distributed hydrological model was implemented in the MIKE-SHE software of DHI Water and Environment (DHI, 2008a, b). The model includes five model components: overland flow, channel flow, evapotranspiration, unsaturated flow and saturated flow (DHI, 2008a, b). A simulation resolution of 5 km is used. The spatial variability of precipitation was assessed based on a lapse rate of 25 % per 100 m when below 2500m altitude and 6 % per 100 m when above 2500 m altitude. The temperature correction lapse rate was set as -0.5°C per 100 m, which was calculated from MODIS remote sensing based land surface temperature data. A crop coefficient of 0.2 was used to transform pan evaporation to potential evapotranspiration. The melting temperature on the southern mountainous slopes was set as 0.5°C and 1.5°C on the northern slopes. The melting was modelled based on the degree-day temperature method, where the degree-day coefficient is set $2.5\text{ mm }^{\circ}\text{C}^{-1}\text{ day}^{-1}$. The initial total snow storage was derived from MODIS based snow cover data and the snow storage variations based on the cumulative precipitation in early winter period. The leaf area index (LAI) input to the model was calculated based on the MODIS product of the Normalized Difference Vegetation Index (NDVI). Soil physical profiles were described by the Van Genuchten equations for both retention curve and unsaturated hydraulic conductivity. The vertical unsaturated soil profile was discretized in 5–50 cm computational layers. The hydraulic conductivity in the saturated zone was calculated from the soil grade. A computational distance of 5 km and a time interval of 15 s were used. The MIKE-SHE catchment model was bi-directionally linked to a full hydrodynamic model of the river, implemented in the MIKE11 software of DHI Water and Environment, to account for the surface-ground water interactions. For full details on the spatially distributed model and its calibration and validation results, the reader is referred to Liu et al. (2011). The EF of the calibrated MIKE-SHE model is 0.50 for the daily runoff at BYBLK station and 0.72 at DSK station; the validated EF is -0.69 at BYBLK station and 0.27 at DSK station.

Title Page

Abstract

Introduction

Conclusions

References

Tables

Figures



Back

Close

Full Screen / Esc

Printer-friendly Version

Interactive Discussion



4.3 Calibration and validation results

Next to the EF coefficient calculated based on the total flows, the goodness-of-fit of the hydrological models were evaluated based on the following statistics: the correlation coefficient (CF) between simulated and observed flows (Rodgers and Nicewander 1988), and the cumulative volume error (VF) in the simulated flows. Table 1 lists the calibration and validation results at BYBLK and DSK gauging stations. Next to the evaluation of the total flows (TF), which are the combined result of the different sub-flows, also results on the baseflow or slow flow (SF), interflow (IF) and quick flow (QF) were tested. Given that this study includes a focus on high and low flow extremes, and on climate change impact analysis, extreme wet and dry conditions also have to be considered explicitly in the model evaluation. This was done based on nearly independent peak and low flows extracted from the daily time series, using hydrological independence criteria. Following the method proposed by Willems (2009), two successive events are considered independent if (i) the time length of the decreasing flank of the first event exceeds a given value (to be based on the recession constant of the quick runoff subflow), (ii) the minimum flow in between the two events drops down to a given fraction of the peak flow, and (iii) the peak flow increment (above the lowest flow in between the two events) has a minimum height.

5 Downscaling of the hydro-climatic data

5.1 Consistency check

A consistency and accuracy check has been carried out on the GCM simulation results to filter certain GCM runs which are not suitable for the particular study region (Baguis et al., 2010). The accuracy check was based on certain criteria comparing the results for the control runs of the selected GCMs with the observations at the ground meteorological station at BYBLK. The criteria considered in this study area are the Root Mean

Climate change impact on water resource extremes

T. Liu et al.

Title Page

Abstract

Introduction

Conclusions

References

Tables

Figures



Back

Close

Full Screen / Esc

Printer-friendly Version

Interactive Discussion



Square Relative Error (RMSRE; Eq. 6) and the relative bias (Eq. 7).

$$\text{RMSRE}(\%) = \sqrt{\frac{1}{k} \sum_{i=1}^k \left(\frac{y_i - x_i}{y_i} \right)^2} \times 100 \quad (6)$$

$$\text{BIAS}(\%) = \frac{1}{k} \sum_{i=1}^k \frac{y_i - x_i}{y_i} \times 100 \quad (7)$$

where k is the total number of (daily) time steps, y_i the climate model result and x_i the observed value at time step i .

The data period ranging from 1979 to 1998 has been considered for the GCM control runs (CN) as well as for the observed data at BYBLK station. The bias and RMSRE statistics have been calculated for the average annual and monthly volume of precipitation and mean monthly temperature. It seems that the GCMs do not precisely consider the geographic features of the Xinjiang Province, given the consistent positive bias in mean annual temperature. If the GCMs' temperature has consistent bias but high correlation with observations, the error can be considered as systematic error and would not affect the model accuracy (Wilby and Wigley, 1997). The limited RMSRE values (less than 6%; see Fig. 4) show that the GCMs have good correlation with the observed annual average temperature. When the monthly variations are analyzed (Fig. 5), higher similarities are found in the relative monthly variations than in the absolute values. The differences in absolute values can be partly due to the differences in hydro-climatic variables at the local point scale of the station considered versus the grid averaged GCM results.

For precipitation (PR), the bias ranges from -40% to positive values up to 100% for the yearly scale or higher for the monthly scale. The RMSRE is higher than 20% . At the monthly scale, Figs. 4 and 5 show that the climate models are less consistent and reliable in describing precipitation variations than they are in predicting temperature variations.

Climate change
impact on water
resource extremes

T. Liu et al.

Title Page

Abstract

Introduction

Conclusions

References

Tables

Figures

◀

▶

◀

▶

Back

Close

Full Screen / Esc

Printer-friendly Version

Interactive Discussion



5.2 Climate change and time series perturbation of precipitation

When the changes in hydro-climatic variables are analyzed (from the control period 1979–1998 till the future period 2046–2065), large differences are found between different GCM runs. This uncertainty has been accounted for in this study by making use of an ensemble modelling approach. The entire range of climate change projections from all GCM runs have been clustered into a more limited number of scenarios (mean, high and low) before input into the hydrological models. The mean scenario corresponds to the average value of the change factor for all considered GCM runs, while the high/low scenarios correspond to the maximum/minimum values of the change factors of all considered GCM runs.

The climate change signals were for each scenario extracted from the coarse gridded GCM results and applied to the historical observations at BYBLK gauging station by using a statistical downscaling method. New time series of daily precipitation for the period 2046–2065 have been generated after changing (perturbing) the number of wet days in the historical series (1979–1998) and after applying wet day perturbation factors to the daily precipitation intensities of the wet days. The latter change in wet day intensity changes was done in a quantile based way (depending on the return period of the precipitation intensity), following the approach by Ntegeka et al. (2011) and Willems and Vrac (2011).

In the approach, the absolute amounts of precipitation were derived from the GCM scenario runs (SC) and the GCM control runs (CN), and applied to the observation records (OBS) of daily precipitation. This is based on the wet day perturbation factors (for both the wet day frequency and the wet day intensity quantiles) for each of the three (mean, high, low) scenarios. The perturbations have been applied in a two-step way. In a first step, the number of wet days has been changed. When the wet day frequency increases, wet days have been randomly selected from the time series and replaced by zero precipitation values. For months where the wet day frequency decreased, dry days have been randomly selected for that month and replaced by a random wet day

HESSD

8, 6593–6637, 2011

Climate change impact on water resource extremes

T. Liu et al.

Title Page

Abstract

Introduction

Conclusions

References

Tables

Figures

◀

▶

◀

▶

Back

Close

Full Screen / Esc

Printer-friendly Version

Interactive Discussion



intensity (randomly selected from the wet day intensities in that month).

In a second step, the wet day intensities were perturbed in a quantile based way. This means that for each month, all wet day intensities were ranked from the highest to the lowest intensity value and empirical probabilities linked to each intensity value. The same is done for the GCM based results: intensity perturbation factors are calculated as a function of the probability. To each wet day in the input series of the hydrological model (after changes in the wet day frequency), an intensity perturbation factor is applied, depending on the intensity probability of that day. See Ntegeka et al. (2011) and Willems and Vrac (2010) for more details on this method.

The approach is summarized in Fig. 6. For each of the 12 months (January to December), the following steps were followed:

- Count the number of wet days (WD; precipitation more than 0.1 mm/day) in SC and CN according to each calendar month; these are denoted WD_SC and WD_CN;
- Obtain the relative change in the frequency of wet days, $fn = WD_SC / WD_CN$;
- Randomly generate arrays (subsets of wet and dry days) according to the frequency change; $fn > 1$ means SC has more wet days than CN and some dry days have to be replaced by wet days in OBS; while, $fn < 1$ means SC has less wet days and some wet days have to be replaced by dry days;
- The PR intensities of wet days in the modified OBS are sorted and empirical probabilities calculated;
- The perturbation factor (PF) is calculated for each empirical probability based on the ratio of SC over the CN PR intensity for that probability (linear interpolation is applied between the PR intensities when different sets of empirical probabilities are obtained for SC and CN;

Climate change impact on water resource extremes

T. Liu et al.

Title Page

Abstract

Introduction

Conclusions

References

Tables

Figures



Back

Close

Full Screen / Esc

Printer-friendly Version

Interactive Discussion



- The PF is applied to each wet day in OBS (depending on the empirical probability of that day) to generate the perturbed observed series NOBS which includes the climate change signal/trend;
- The previous steps are repeated 5 times and one of the 5 generations selected (the one that leads to results closest to the mean monthly PR value of the 5 generations); this step avoids that a random generation is considered that contains strong outliers.

Since the wet day perturbation method is originally developed for humid regions where the precipitation events are relatively frequent (Ntegeka et al., 2011), its application for dry regions might be problematic. For the extremely dry conditions of the Tarim basin, the number of dry days might significantly enlarge. Therefore, the results of the wet day perturbation method have been compared in this study with another (simpler) approach, based on monthly volume correction factors. The correction factor was for each month derived from the ratio of average monthly volume of generated precipitation (2046–2065) to average monthly volume of observed precipitation (1979–1998). It is clear that this change is due to the combined effect of the wet day frequency and quantile perturbations. The two methods are hereafter referred to as the wet day perturbation (WDP) method and the monthly volume (MV) change method.

5.2.1 Wet day frequency and quantile perturbation factors

Figure 7 shows the wet day perturbation factors for the precipitation intensity extremes. The perturbation factor of 1 means that the precipitation in the future period will have no change in comparison with the control period.

In winter months, precipitation quantile perturbation factors higher than 1 are found for most GCM runs, while higher uncertainty is noticed for the summer months. The precipitation quantile perturbation factors in summer indeed range from positive to negative values, although negative mean values are found for August and September.

Climate change impact on water resource extremes

T. Liu et al.

Title Page

Abstract

Introduction

Conclusions

References

Tables

Figures



Back

Close

Full Screen / Esc

Printer-friendly Version

Interactive Discussion



Figure 8 shows the mean of the projected future change in the number of wet days per month comparing with the control runs. This mean has been calculated based on all GCM runs for each of the three GHG emission scenarios considered. Results indicate that the number of wet days in winter will increase but in summer it might slightly decrease. These changes are similar to the changes found for the precipitation quantiles: the winters become wetter, the summers might become dryer. When the changes are compared for the three GHG emission scenarios considered, it is noticed that the A1B and A2 scenarios have a stronger change between winter and summer than the B1 scenario.

5.2.2 Monthly volume change factors

Figure 9 shows the mean monthly precipitation volume changes (for all GCM runs of the A1B emission scenario). The changes directly obtained from the GCM runs (MV method) have been compared with the changes after application of the WDP method (changes in wet day frequency and quantiles in the input series of the hydrological model). Based on this comparison the validity of the WDP method can be partly tested.

Similar monthly volume changes are found in the Fig. 9 (increases up to 20%–30% in winter months, changes close to zero for summer months at BYBLK station). The monthly volume change factors by the WDP method are slightly higher than by the MV approach. The differences are, however, minor and small in comparison with the maximum and minimum MV changes among all GCM runs considered. Given these minor differences, and given that the WFD method accounts for the dependency of the changes in the precipitation extremes and the precipitation probability, the WDP method was selected for further use in the hydrological impact analysis of climate change (including the impact on hydrological extremes).

Climate change impact on water resource extremes

T. Liu et al.

Title Page

Abstract

Introduction

Conclusions

References

Tables

Figures



Back

Close

Full Screen / Esc

Printer-friendly Version

Interactive Discussion



5.3 Climate change and time series perturbation of temperature and evapotranspiration

Statistical downscaling of temperature and PET has been performed by applying a simpler, more straightforward approach than for precipitation. Given that temperature and PET temporal variations are not organized in events or wet/dry days, obviously no wet day frequency perturbations were considered. Only mean monthly changes (MV approach) were implemented. The changes are for temperature defined as absolute differences (between future and control periods), while they are defined as relative changes (ratios of the values during future versus control periods) for PET.

Again, high, mean and low levels of changes were considered, to account for the entire ensemble range of GCM runs considered. Figure 10 shows the mean levels of monthly temperature change for the A2, A1B and B1 emission scenarios.

The temperature change is positive and ranges (for the yearly averaged temperature) from 1 to 3 degrees at BYBLK station. The monthly changes range at that station from 1.5 to 3 degrees. The winter and summer months have higher increases in temperature than the months in spring or autumn. When the emission scenarios are compared, it can be seen that the B1 scenario has the lowest temperature increase. The A1B and A2 scenarios have similar changes. The temperature change for the A1B and A2 scenarios are about 1 degree higher than for the B1 scenario.

Correspondingly, also the PET (Fig. 11) has mostly positive changes, which are again higher for the A1B and A2 emission scenarios. Highest changes are in the months September and October, with increases up to about 10 % at BYBLK station.

6 Climate change impact analysis on hydrological variables

The lumped conceptual model only requires precipitation, temperature and PET as input data (considered at specific locations, for model calibration reasons). The distributed model demands (for the same hydro-climatic variables) spatially variable input

Climate change impact on water resource extremes

T. Liu et al.

Title Page

Abstract

Introduction

Conclusions

References

Tables

Figures



Back

Close

Full Screen / Esc

Printer-friendly Version

Interactive Discussion



data. Given that the spatial input variability in the MIKE-SHE model was based on interpolation of the available station data, the same locations were considered for input after climate changes. The historical input series considered on the basis of model calibration and validation were perturbed based on the procedure outlined above (WDP method for precipitation, MV method for temperature and PET).

Next to the combined impact of all hydro-climatic input variables, also the separate effects of each of the perturbed inputs were simulated in order to have a thorough understanding of the contribution of each variable to the total impact. For the lumped conceptual model (due to its model structure and concept), hydrological impacts were analyzed only for the total flow results at the flow gauging stations BYBLK and DSK. For the MIKE-SHE, more detailed investigations could be done, on more hydrological variables and including spatial variability. Because the hydrological models need a warming up time (to correct assumed initial catchment conditions), the period of the first three months was excluded from the simulation results.

6.1 Combined impact of all hydro-climatic input variables

Figure 12 (1st row) shows the mean level of impact results on the mean monthly flow at BYBLK and DSK gauging stations. These show the combined effect of the changes in precipitation, temperature and PET.

For BYBLK station, the climate change impact on the total catchment runoff and river flow is positive during the entire year (average changes in monthly volumes in the range 1.3% ~ 12.8%). For the VHM results at DSK station, the flow changes are strongly positive during the snow melting period April–May (17.7% ~ 29.7%). The snow melting period becomes longer at both BYBLK and DSK stations. The impact results of the MIKE-SHE model are, however, highly different, mainly at DSK station. At BYBLK station, a positive impact (0.4% ~ 25.7%) is found during July–August, while at DSK station the MIKE-SHE discharges reduce to -6.2% ~ 3.7%. During the snow melting period, a negative impact (-9.5% ~ -5.4%) occurs in April and a positive impact (2.3% ~ 3.2%) in May. Discharge increases are found in winter (4% ~ 29.2%). For

Climate change impact on water resource extremes

T. Liu et al.

Title Page

Abstract

Introduction

Conclusions

References

Tables

Figures

◀

▶

◀

▶

Back

Close

Full Screen / Esc

Printer-friendly Version

Interactive Discussion



both hydrological models and both stations, interestingly the three emission scenarios (A1B, A2 and B1) give similar impact results.

For the VHM model, the total flow in the snow melting period increases due to more snow accumulation in winter. The melting period becomes longer at DSK station in comparison with BYBLK station. After the snow melting period, the flow at BYBLK station increases while it decreases at DSK station. Next to the increase in snow melting volume, there is also a shift in time of the snow melting period due to the temperature rise. This contributes to the flow increase in April–May and decrease in the following months.

For the MIKE-SHE model, higher temporal variability in the impact results are found when compared with the impact results of the lumped conceptual model. Considerable discharge decreases are found in April and July at DSK station, while consistently positive impacts up to about 25 % are found during the entire year at BYBLK station.

These changes by the VHM and MIKE-SHE models are explained based on the impact results for the individual hydro-climatic input variables; see Sect. 6.2.

The MIKE-SHE also provides information on the spatial variability of the hydrological outputs. Figure 13 shows the mean level of impact results on the groundwater levels based on the simulation period 2000 ~ 2001. The groundwater level impacts averaged over the Kaidu river basin are shown. The average groundwater change over the entire study area ranges from -0.08 cm to 0.41 cm. Figure 14 shows that the northern mountainous areas have positive impacts. This is because of the increase in rainfall and related infiltration and percolation. The groundwater recharge increases in the snow melting period (March to May), but decreases in the rainy season (May to September) and continuously feeds the groundwater zone even in winter (September to March). The groundwater table changes are more positive in the higher elevation areas and less positive or even negative in the southern plain region.

While Fig. 12 compared the mean level of impact for the two hydrological models, the two stations and the three emission scenarios, Fig. 15 shows the high, mean and low levels of impact for the VHM results at BYBLK discharge station. It can be seen in

Climate change impact on water resource extremes

T. Liu et al.

Title Page

Abstract

Introduction

Conclusions

References

Tables

Figures

◀

▶

◀

▶

Back

Close

Full Screen / Esc

Printer-friendly Version

Interactive Discussion



at BYBLK station and 1.7 % ~ 2.4 % at DSK station in March after the VHM modelling. The temporal shift of the snow periods causes a decrease in runoff flow during the original snow period April–May (–4.5 % ~ –3.9 % at BYBLK and –6.4 % ~ –6.1 % at DSK). BYBLK station is more sensitive to the temperature rise due to its location in the upper mountainous region. The temperature increase barely influences the discharge after the snow melting at DSK station since the runoff from the mountainous region only covers a small portion of total flow at this station, which is at the outlet of the Kaidu River basin. In the MIKE-SHE model, the increased temperature also brings the snow melting period forward, which leads to a positive change in March (6.7 % ~ 8.6 % at BYBLK and 7.7 % ~ 8.4 % at DSK) and a negative change in April (–2.7 % ~ –1 % at BYBLK and –11.2 % ~ –9.4 % at DSK). The increased temperature also postpones the frozen season and results in more liquid rainfall that transforms into discharge. Both stations respond to temperature in a similar way but with different magnitudes. The mountainous region (BYBLK station) is for both models more sensitive to the temperature change.

The impact results of the changes in PET are also interesting. They do not simply reflect the changes in temperature, but also make clear how the differences in the soil moisture model implementation affect the results. The snow melting submodel in VHM assumes that the soil moisture content keeps constant in the winter season and keeps its level at saturation during the snow melting period. This is because the frozen soil does not change so much by PET. Moreover, the snow evaporation has not been accounted for due to lack of data to estimate/calibrate that process. The PET change leads in the VHM model to small negative flow impacts all over the year. The impact magnitudes are similar at BYBLK and DSK stations and range from –1.1 % to –0.2 % (annual changes). These small changes are due to the soil moisture modelling assumptions in VHM, as explained above. In the MIKE-SHE model, the PET changes also lead to negative flow impacts (–2.1 % ~ –0.3 % annual change) but with higher temporal variations. The increased PET has stronger effects on the mountainous runoff, while it has stronger effects on the discharges downstream the catchment

**Climate change
impact on water
resource extremes**

T. Liu et al.

Title Page

Abstract

Introduction

Conclusions

References

Tables

Figures

◀

▶

◀

▶

Back

Close

Full Screen / Esc

Printer-friendly Version

Interactive Discussion



during the snow melting period. This is due to the higher water availability in that period.

Next to the impact on the monthly mean flows, also the impacts on peak and low daily flow extremes were studied. These extremes were extracted from the daily time series using independence criteria. Figure 16 compares the impacts on mean monthly flows, peak daily flows and low daily flows. Similar but stronger changes are found for the peak flows in comparison with the mean monthly flows, while similar but smaller changes are found for the low flows. Only for the VHM results at DSK station, stronger (negative) changes are found. This is due to the stronger influence of the precipitation changes at that station. The control area of BYBLK station (mainly mountainous region) is only 20.4 % of the catchment area at DSK station. The runoff from the mountainous region therefore only has a limited contribution to the total flow at DSK station, while the effect of precipitation is stronger. Mainly the reduced precipitation in July and August (44.1 % of annual precipitation) strongly influence the runoff variations at DSK station.

Figure 17 shows for the VHM results how the impact on the peak flow extremes depends on the return period. It is concluded that the climate scenarios have more influence on peak flows than on low flows.

Results show that the distributed model leads to stronger changes in mean and peak flows than the lumped conceptual model. For DSK station, strongly different changes are found for the lumped conceptual and distributed models. For the precipitation and combined impacts, the VHM model projects negative mean, peak and low flow impacts, while the MIKE-SHE model projects clear positive impacts. Section 6.3 discusses the physical reasons for these differences.

6.3 Discussion on VHM versus MIKE-SHE results

In previous impact results, the spatially distributed model was found to be more sensitive to scenario precipitation than the lumped conceptual model. The reason is that the lumped conceptual model treats the increased scenario precipitation in the frozen

Climate change impact on water resource extremes

T. Liu et al.

Title Page

Abstract

Introduction

Conclusions

References

Tables

Figures



Back

Close

Full Screen / Esc

Printer-friendly Version

Interactive Discussion



**Climate change
impact on water
resource extremes**

T. Liu et al.

Title Page

Abstract

Introduction

Conclusions

References

Tables

Figures



Back

Close

Full Screen / Esc

Printer-friendly Version

Interactive Discussion



season as snow storage, which does not contribute to runoff after the temperature declines below the critical level. The increased flow by the lumped conceptual model in winter is due to the increased baseflow in summer. For the spatially distributed model, however, even when the temperature at the gauging station declines to the critical level, part of the catchment is not yet cooler than the critical temperature and the precipitation can still contribute to the runoff. This is different for the lumped conceptual model, for which the temperature input is only based on the temperature gauging station located at mid altitude in the catchment. When the gauged temperature reaches the critical level, the whole catchment starts melting at the same time in the lumped conceptual model. The differences in temperature scenario impacts (snow melting differences) thus are mainly due to the difference in spatial detail and related variability across the river basin. Also in the summer season, results are significantly different. Despite the decline in summer precipitation, the glacier submodel in the spatially distributed model stores more precipitation in winter and consequently provides higher runoff in summer. This is also because the glacier is assumed to have enough ice storage in the spatially distributed model. Both types of models show similar impact results of the scenario PET. Because the PET has a higher influence on baseflow than on overland flow, the range of change for total flow due to change in PET is rather small. It can be seen that the integrated impacts from all climate variables are almost fully explained by the impacts of the changes in precipitation and temperature. This is trivial given that precipitation and temperature are dominant variables in control of the local surface water resources.

7 Conclusions

Climate change impacts on the surface and ground water resources of one of the main headwater regions of the Tarim basin have been studied. They were based on high, mean and low climate change scenarios, after statistical analysis and downscaling of a large set of GCM runs available for the region. Wet day frequency and quantile

perturbations were applied to the inputs of the hydrological models for precipitation, while a simplified procedure (based on changes in mean monthly volumes) was applied for temperature and PET.

Although the climate change scenarios are far the most important influencing factor, the climate change impact results are also strongly affected by the hydrological model structure. As shown in Figs. 12 and 16, the impact results of the lumped conceptual model and the spatially distributed model are similar in order of magnitude, but the impact temporal distributions are quite different. The different emission scenarios, however, result to similar impact magnitude.

The spatially distributed model was found to be much more sensitive to scenario precipitation than the lumped conceptual model due to the ignorance of the spatial variability by the latter model. In the lumped model, when the temperature input reaches the critical level, the whole catchment starts/stops melting at the same time while spatial variability in temperature, PET and temperature/PET changes is accounted for in the distributed model. This higher variability leads to more gradual starting/ending of melting/runoff in the MIKE-SHE model. It was seen that the hydrological climate change impacts were mainly controlled by the changes in precipitation and temperature.

We expect from the analysis of the results and their discussion that the impact results simulated by the spatially distributed model are more realistic than by the lumped conceptual model. The distributed model accounts for the spatial variations, which have shown to be important in accurately describing the temporal variations in snow melting and runoff. On the other hand, the lumped conceptual model can more easily simulate the effect of climate change scenarios based on 20 yr input series. Such long-term simulation is needed if one wants to study the impacts on extreme events. The long computational time of the spatially distributed models does not allow such long continuous time series simulation to be carried out in a reasonable time. Simulations with that model have to be limited to few years. Given that such period contains limited number of extreme events, it is difficult to assess the impact on extreme events with such model. Extreme events (e.g. floods and water shortage) are, however, important

Climate change impact on water resource extremes

T. Liu et al.

Title Page

Abstract

Introduction

Conclusions

References

Tables

Figures



Back

Close

Full Screen / Esc

Printer-friendly Version

Interactive Discussion



events in support of water management. One solution to overcome that limitation of the spatially distributed model is to carry out model simulations based on multiple statistical categories, e.g. for wet years, dry years, hot years, cool years or normal years, and to attach frequencies to the categories. Another solution is to look for a compromise solution between the lumped conceptual and detailed spatially distributed models; thus to add some (limited, well-thought) details to the lumped model.

Acknowledgements. The research has been carried out under the auspices of the State Key Development Program for Basic Research of China (Grant No. 2010CB951004) and of the Federal Science Policy Office (BelSPO) of the government of Belgium. Sincere thanks should be expressed to the Tarim Water Resources Management Bureau (TMB) and the Xinjiang Meteorological Administration (XMB), for providing the necessary data and to act as end users of this research.

References

- Allen, R. G., Pereira, L. S., Raes, D., and Smith, M.: Crop evapotranspiration – Guidelines for computing crop water requirements – FAO Irrigation and drainage No. 56, FAO – Food and Agriculture Organization of the United Nations, Rome, Italy, 1998.
- Baguis, P., Roulin, E., Willems, P., and Ntegeka, V.: Climate change scenarios for precipitation and potential evapotranspiration over central Belgium, *Theor. Appl. Climatol.*, 99(3–4), 273–286, 2010..
- Chen, Y. N., Li, W. H., Xu, C. C., and Hao, X. M.: Effects of climate change on water resources in Tarim River Basin, Northwest China, *Journal of Environmental Sciences*, 19(4), 488–493, doi:10.1016/S1001-0742(07)60082-5, 2007.
- Chen, Y. N., Xu, C. C., Hao, X. M., Li, W. H., Chen, Y. P., and Zhu, C. G.: Fifty-year Climate Change and Its Effect on Annual Runoff in the Tarim River Basin, China, *J. Glaciol. Geocryol.*, 30(6), 0921–0929, Retrieved from <http://seekspace.resip.ac.cn/handle/2239/46339>, 2008.
- Chen, Y. N., Takeuchi, K., Xu, C., Chen, Y. P., and Xu, Z.: Regional climate change and its effects on river runoff in the Tarim Basin, China, *Hydrol. Process.*, 20(10), 2207–2216, doi:10.1002/hyp.6200, 2006.

Climate change impact on water resource extremes

T. Liu et al.

Title Page

Abstract

Introduction

Conclusions

References

Tables

Figures



Back

Close

Full Screen / Esc

Printer-friendly Version

Interactive Discussion



Climate change impact on water resource extremes

T. Liu et al.

Title Page

Abstract

Introduction

Conclusions

References

Tables

Figures

◀

▶

◀

▶

Back

Close

Full Screen / Esc

Printer-friendly Version

Interactive Discussion



- DHI: MIKE-SHE user manual volume 2: Reference guide. DHI Water & Environment, Horsholm, Denmark, 2008a.
- DHI: MIKE 11, A Modelling System for Rivers and Channels, Reference Manual. DHI Water & Environment, Horsholm, Denmark, 2008b.
- 5 Han, C. X. and Luo, H.: Study on the Development Level of Population-cultivated Land System in the Area of Tarim Mainstream, *J. Anhui Agric. Sci.*, 38(9), 4744–4747, 2010.
- Huang, Y., Chen, X., Li, Y. P., Willems, P., and Liu, T.: Integrated Modeling System for Water Resources Management of Tarim River Basin. *Environmental Engineering Science*, 27(3), 255–269, doi:10.1089/ees.2009.035, 2010.
- 10 Nakicenovic, N., Alcamo, J., Davis, G., de Vries, B., Fenhann, J., Gaffin, S., Gregory, K., Grübler, A., Tae, Y. J., Kram, T., La Rovere, E. L., Michaelis, L., Mori, S., Morita, T., Pepper, W., Pitcher, H., Price, L., Riahi, K., Roehrl, A., Rogner, H. H., Sankovski, A., Schlesinger, M., Shukla, P., Smith, S., Swart, R., van Rooijen, S., Nadejda, V., Zhou, D. D.: Emissions scenarios. A special report of the IPCC Working Group III. Cambridge University Press, UK, 2000.
- 15 Jiang, L. Q., Chen, X., and Bao, A. M.: Analysis on the Changing Dynamics of Groundwater Level in the Lower Reaches of the Tarim River, *Xinjiang, Arid Land Geography*, 28(1), 0033–0037, 2005.
- Jiang, Y. and Xia, J.: The Hydrological Characteristics of Runoff and Its Response to Climatic Change in Tarim, *Resource Science*, 29(3), 45–52, Retrieved from www.igsnr.cn/lwzzlmg/1212651003642.pdf, 2007.
- 20 Klemes, V.: Operational testing of hydrological simulation models, *Hydrolog. Sci. J.*, 31(1), 13–24, 1986.
- Li, X. G. and Williams, M. W.: Snowmelt runoff modelling in an arid mountain watershed, Tarim Basin, China, *Hydrol. Process.*, 22(19), 3931–3940, doi:10.1002/hyp.7098, 2008.
- 25 Li, X. Y., Li, Z. Q., Ding, Y. J., Liu, S. Y., Zhao, Z. P., Luo, L., Pang, H. X., Li, C. J., Li, H. L., You, X. N., and Wang, F. T.: Seasonal variations of pH and electrical conductivity in a snow-firn pack on Glacier No. 1, eastern Tianshan, China. *Cold Reg. Sci. Technol.*, 48(1), 55–63, doi:10.1016/j.coldregions.2006.09.006, 2007.
- 30 Li, Y. A., Tan, Y., Jiang, F. Q., Wang, Y. J., and Hu, R. J.: Study on Hydrological Features of the Kaidu River and the Bosten Lake in the Second Half of 20 Century, *J. Glaciol. Geocryol.*, 02, 0215–0218, 2003.
- Liu, T., and Willems, P.: Top-down lumped conceptual modeling including snow melting for

Climate change impact on water resource extremes

T. Liu et al.

[Title Page](#)
[Abstract](#)
[Introduction](#)
[Conclusions](#)
[References](#)
[Tables](#)
[Figures](#)




[Back](#)
[Close](#)
[Full Screen / Esc](#)
[Printer-friendly Version](#)
[Interactive Discussion](#)


Kaidu and Hetian river basins in China, *J. Hydrol.*, submitted, 2011.

Liu, T., Willems, P., Feng, X. W., Li, Q., Huang, Y., Bao, An. M., Chen, X., Veroustraete F., and Dong, Q. H.: On the usefulness of remote sensing input data for spatially distributed hydrological modelling: case of the Tarim River basin in China, *Hydrol. Process.*, 25, n/a, doi:10.1002/hyp.8129, 2011.

Liu, Y., Bao, A. M., and Chen, X.: Modeling Groundwater Table Dynamics at the Lower Reaches of the Tarim River, *Resources Science*, 28(5), 91–95, 2006.

Ntegeka V., Willems P., Roulin E., and Baguis, P.: Developing tailored climate change scenarios for hydrological impact assessments, *J. Hydrol.*, submitted, 2011.

Shi, Y. F., Shen, Y. P., Kang, E., Li, D. L., Ding, Y. J., Zhang, G. W., and Hu, R. J.: Recent and Future Climate Change in Northwest China, *Climatic Change*, 80(3–4), 379–393, doi:10.1007/s10584-006-9121-7, 2006.

Tong, Y. F., Wu, C. X., and Wang, B. Y.: Relations on Population Growth, Water Resource and Desert in Talimu River Area of Xinjiang Province, *Population Journal*, 1, 37–40, 2006.

Wang, D. S., Wang, Y. G., Wang, J., Mao, W. Y., and Shen, Y. P.: Change of Climate and Hydrology in the Tarim River Basin during Past 40 Years and Their Impact, *J. Glaciol. Geocryol.*, 25(3), 0315–0320, 2003.

Wang, S. D., Zhang, H., Wei, L., Mao, W. F., Zhang, J. G., Wang, F. Y., and Shen, Y. P.: Streamflow Variations of Four Source Rivers and Mainstream of Tarim River, Xinjiang and Transfer Water Course in 2003, *J. Glaciol. Geocryol.*, 27(5), 0715–0722, 2005.

Wilby, R. L. and Wigley, T. M. L.: Downscaling general circulation model output: a review of methods and limitations. *Progress in Physical Geography*, 21(4), 530–548, doi:10.1177/030913339702100403, 1997.

Willems, P.: A time series tool to support the multi-criteria performance evaluation of rainfall-runoff models. *Environmental Modelling and Software*, 24(3), 311–321, doi:10.1016/j.envsoft.2008.09.005, 2009.

Willems, P.: Parsimonious rainfall-runoff model construction supported by time series processing and validation of hydrological extremes, *Geophysical Research Abstracts*, 12, 10338–10338, 2010.

Willems, P. and Vrac, M.: Statistical precipitation downscaling for small-scale hydrological impact investigations of climate change, *J. Hydrol.*, 402(3–4), 193–205, 2011.

Xu, C. C., Chen, Y. N., Li, W. H., and Chen, Y. P.: Climate Change and Its Impact on Snow Cover Area in the Tarim River Basin over the Last 45 Years, *J. Glaciol. Geocryol.*, 29(2),

183–191, 2007.

Yang, Q., and Cui, C. X.: Impact of climate change on the surface water of Kaidu River Basin, J. Geogr. Sci., 15(1), 20–28, doi:10.1007/BF02873103, 2005.

- 5 Zhang, Y. C., Li, B. L., Bao, A. M., Zhou, C. H., Chen, X., and Zhang, X. R.: Study on snowmelt runoff simulation in the Kaidu River basin. Science in China Series D: Earth Sciences, 50(S1), 26–35, Science China Press, co-published with Springer, doi:10.1007/s11430-007-5007-4, 2007.

HESSD

8, 6593–6637, 2011

**Climate change
impact on water
resource extremes**

T. Liu et al.

Title Page

Abstract

Introduction

Conclusions

References

Tables

Figures

◀

▶

◀

▶

Back

Close

Full Screen / Esc

Printer-friendly Version

Interactive Discussion



Climate change impact on water resource extremes

T. Liu et al.

Table 1. Model performance evaluation statistics for BYBLK and DSK flow gauging stations, based on daily runoff results after model calibration and validation.

Location	Simulation	VHM Results			MIKE-SHE Results		
		EF [-]	CF [-]	VF [%]	EF [-]	CF [-]	VF [%]
BYBLK	Calibration	0.49	0.71	-2.1	0.50	0.80	20.6
BYBLK	Validation	0.44	0.69	-1.9	-3.12	0.67	-25.6
DSK	Calibration	0.63	0.83	-3.5	0.72	0.89	14.83
DSK	Validation	0.77	0.89	-0.4	0.27	0.75	8.5

Title Page

Abstract

Introduction

Conclusions

References

Tables

Figures



Back

Close

Full Screen / Esc

Printer-friendly Version

Interactive Discussion



Climate change impact on water resource extremes

T. Liu et al.

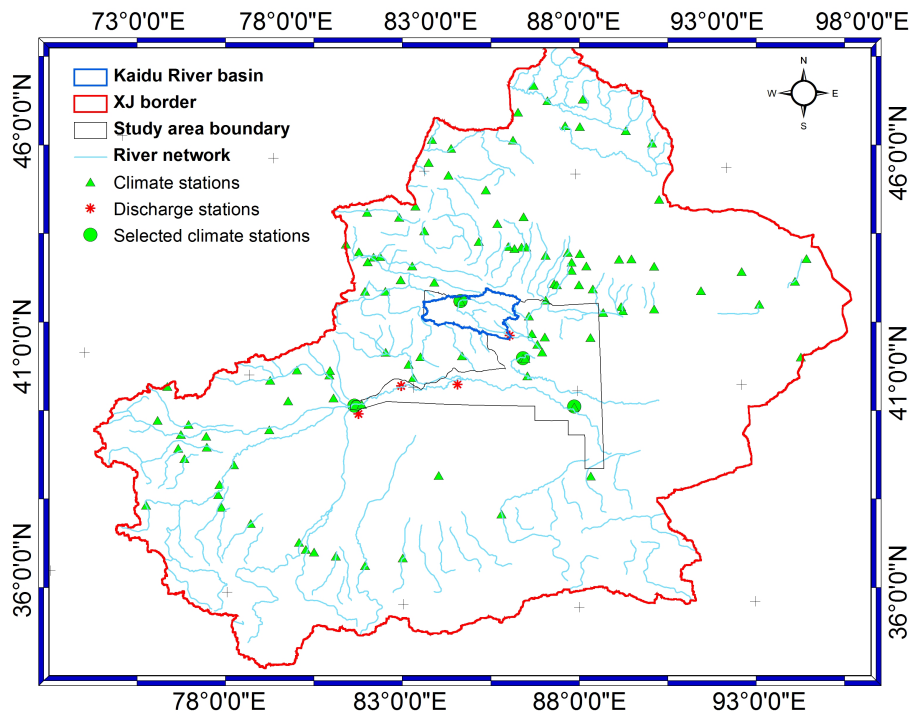


Fig. 1. Location of the Kaidu river basin in the Xinjiang province, the climate stations and discharge stations.

Title Page

Abstract

Introduction

Conclusions

References

Tables

Figures

◀

▶

◀

▶

Back

Close

Full Screen / Esc

Printer-friendly Version

Interactive Discussion

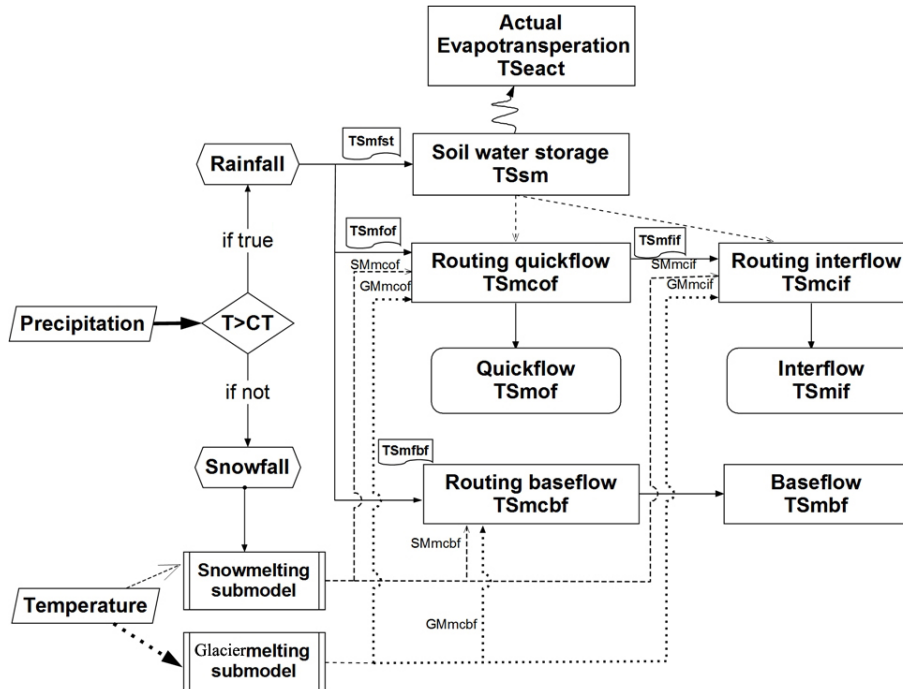


Fig. 3. The lumped conceptual rainfall-runoff model structure, including seasonal snow melting and glacier melting.

Title Page	
Abstract	Introduction
Conclusions	References
Tables	Figures
◀	▶
◀	▶
Back	Close
Full Screen / Esc	
Printer-friendly Version	
Interactive Discussion	

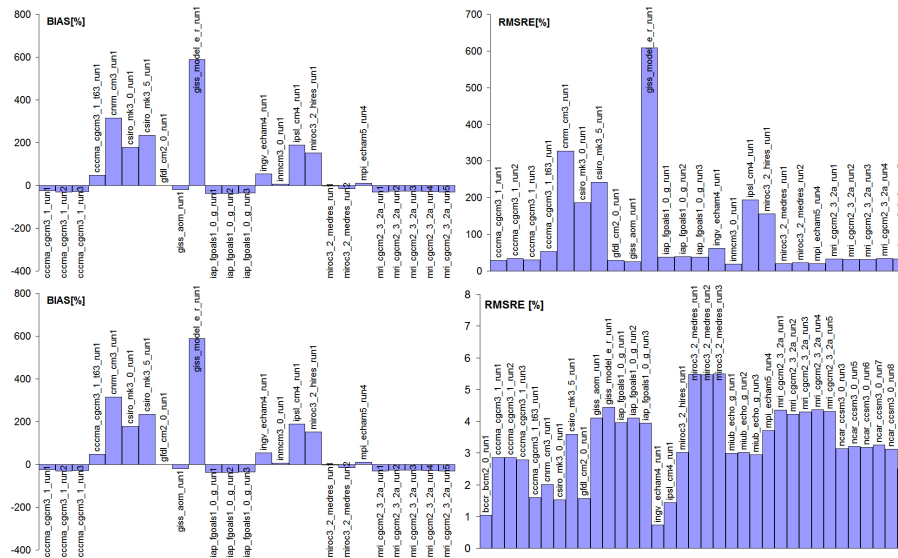


Fig. 4. Bias (left) and RMSRE (right) of GCM based annual precipitation (top) and temperature (bottom) versus observations for 1979–1998 at BYBLK meteorological station.

Title Page

Abstract

Introduction

Conclusions

References

Tables

Figures

⏪

⏩

◀

▶

Back

Close

Full Screen / Esc

Printer-friendly Version

Interactive Discussion



Climate change impact on water resource extremes

T. Liu et al.

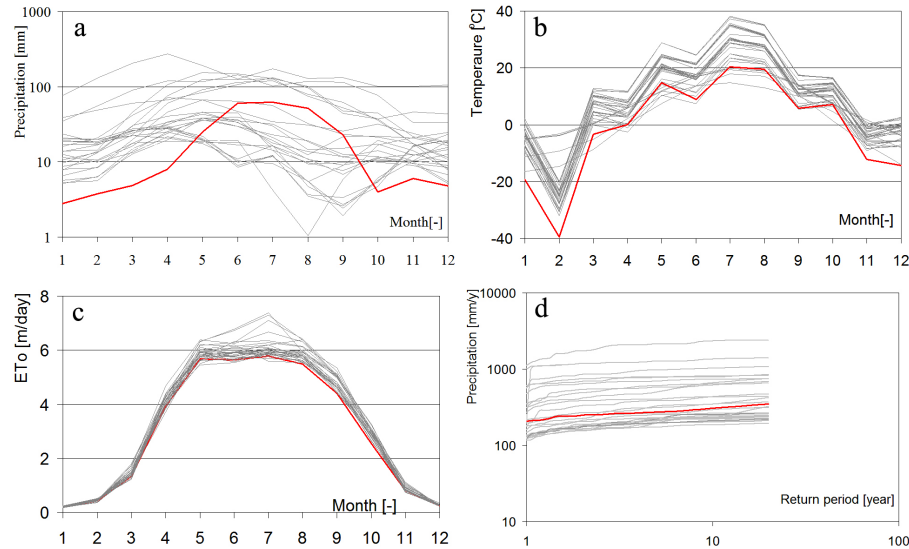


Fig. 5. Precipitation monthly variations **(a)**, monthly average temperature **(b)**, monthly ET_0 **(c)** and return period of annual total precipitation **(d)** for GCM based results and observations for 1979–1998 at BYBLK meteorological station.

Title Page

Abstract

Introduction

Conclusions

References

Tables

Figures

◀

▶

◀

▶

Back

Close

Full Screen / Esc

Printer-friendly Version

Interactive Discussion



Climate change impact on water resource extremes

T. Liu et al.

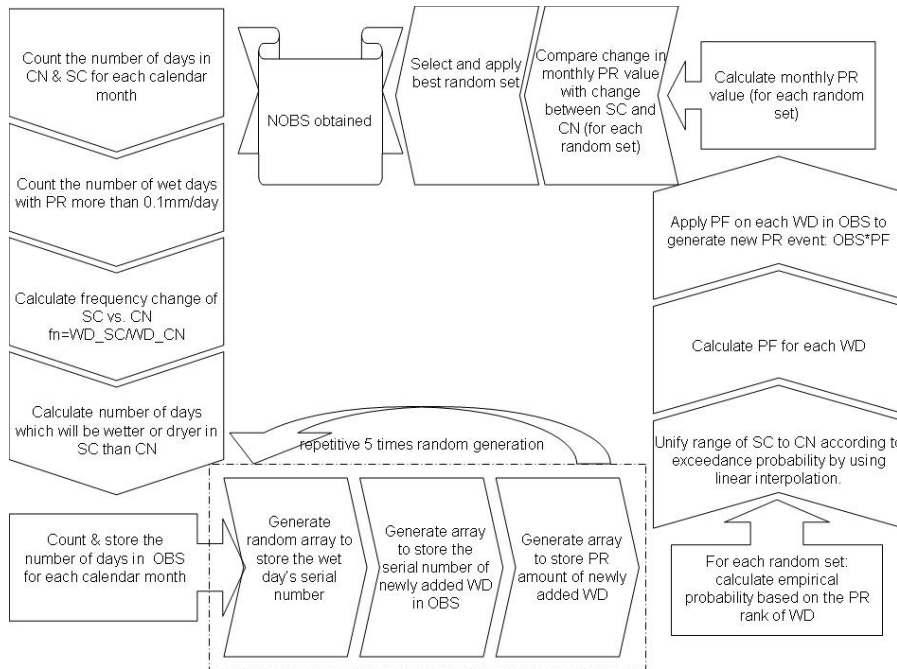


Fig. 6. Steps in the quantile perturbation approach to precipitation data.

Title Page

Abstract Introduction

Conclusions References

Tables Figures

◀ ▶

◀ ▶

Back Close

Full Screen / Esc

Printer-friendly Version

Interactive Discussion



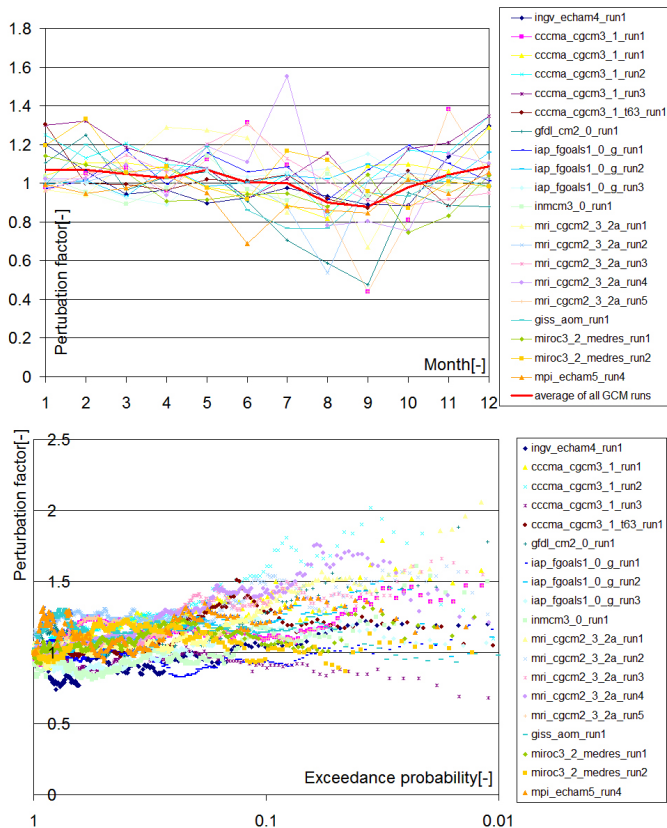


Fig. 7. Perturbation factors for wet day precipitation intensity extremes: mean factors for precipitation quantiles higher than the quantile with exceedance probability 0.1 in each month (top) and perturbation factor versus exceedance probability for February (bottom).

Title Page

Abstract Introduction

Conclusions References

Tables Figures

◀ ▶

◀ ▶

Back Close

Full Screen / Esc

Printer-friendly Version

Interactive Discussion



Climate change
impact on water
resource extremes

T. Liu et al.

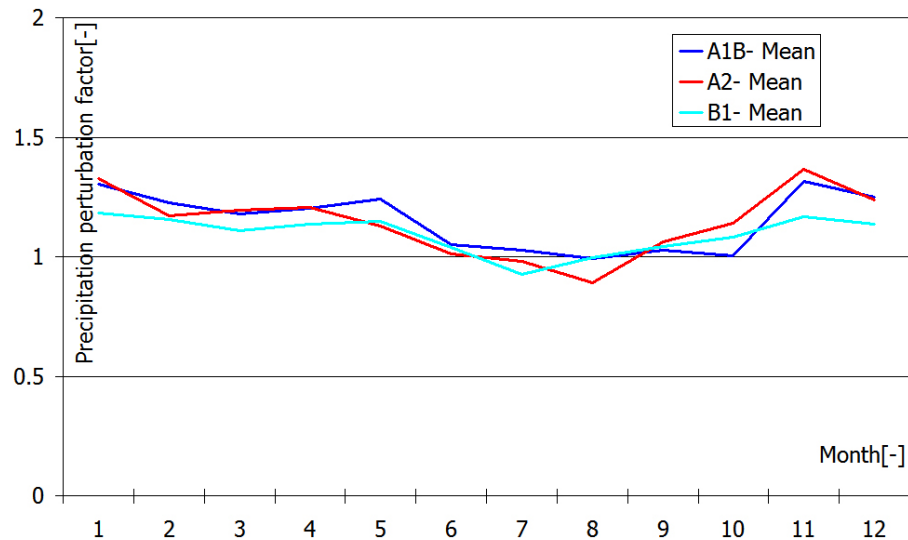


Fig. 8. Mean level of change in the number of wet days per month for A1B, A2 and B1 emission scenarios at BYBLK meteorological station.

[Title Page](#)[Abstract](#)[Introduction](#)[Conclusions](#)[References](#)[Tables](#)[Figures](#)[◀](#)[▶](#)[◀](#)[▶](#)[Back](#)[Close](#)[Full Screen / Esc](#)[Printer-friendly Version](#)[Interactive Discussion](#)

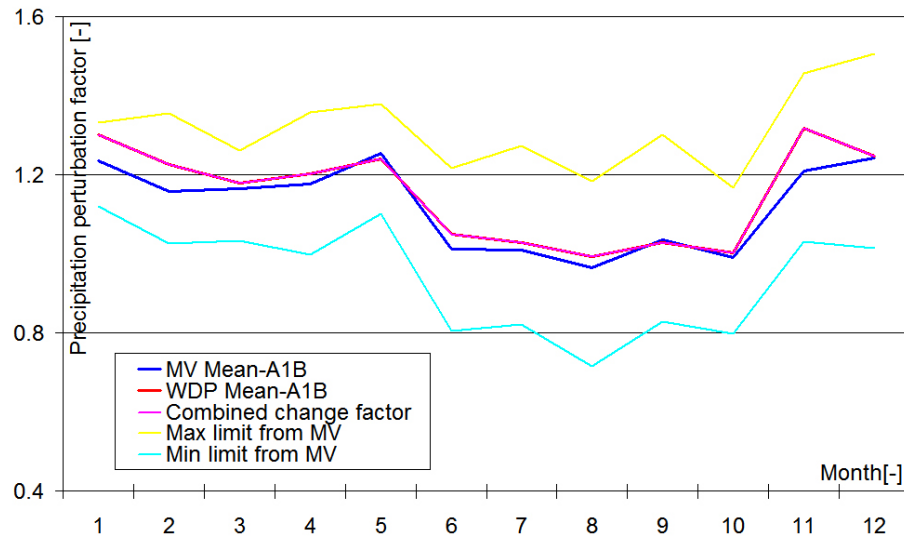


Fig. 9. Comparison of the mean level of change in monthly precipitation volume between the WDP and MV methods for A1B emission scenario at BYBLK meteorological station.

Climate change impact on water resource extremes

T. Liu et al.

Title Page

Abstract

Introduction

Conclusions

References

Tables

Figures

◀

▶

◀

▶

Back

Close

Full Screen / Esc

Printer-friendly Version

Interactive Discussion



**Climate change
impact on water
resource extremes**

T. Liu et al.

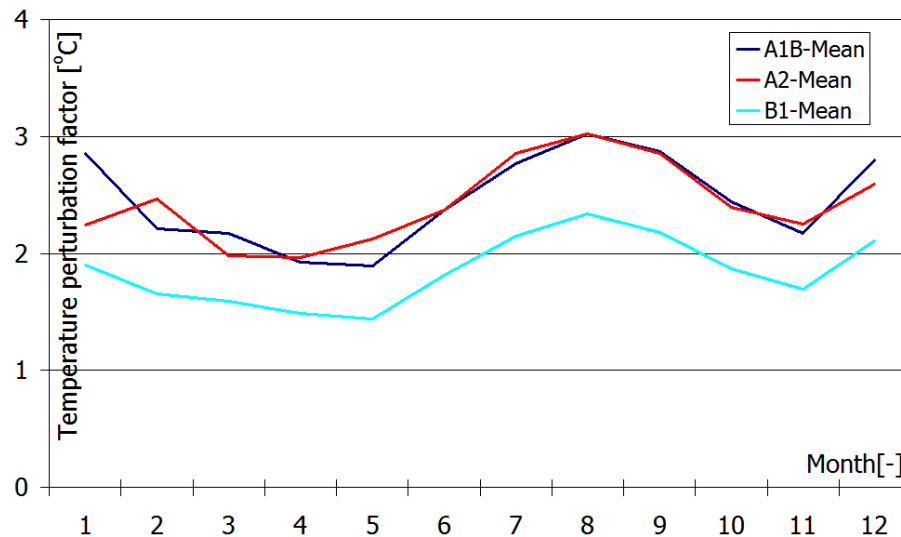


Fig. 10. Mean level of monthly temperature change for A1B, A2 and B1 emission scenarios at BYBLK meteorological station.

Title Page

Abstract

Introduction

Conclusions

References

Tables

Figures

◀

▶

◀

▶

Back

Close

Full Screen / Esc

Printer-friendly Version

Interactive Discussion



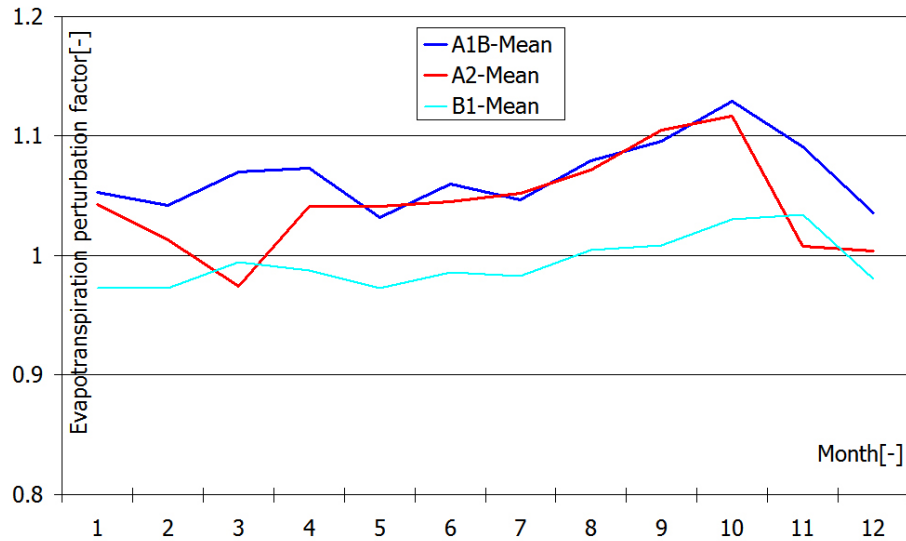


Fig. 11. Mean level of monthly PET change for A1B, A2 and B1 emission scenarios at BYBLK meteorological station.

Climate change impact on water resource extremes

T. Liu et al.

Title Page

Abstract Introduction

Conclusions References

Tables Figures

◀ ▶

◀ ▶

Back Close

Full Screen / Esc

Printer-friendly Version

Interactive Discussion



Climate change impact on water resource extremes

T. Liu et al.

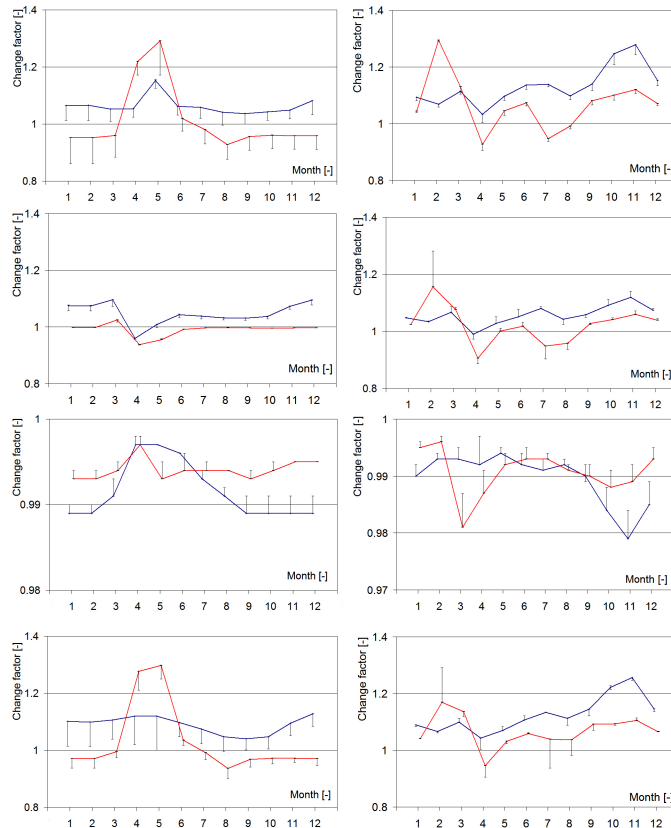


Fig. 12. Mean level of impact results on mean monthly flows for climate variables (precipitation, 2nd row; temperature, 3rd row; ET_0 , 4th row; all 3, 1st row) at BYBLK (blue line) and DSK (red line) gauging stations after VHM (left column) and MIKE-SHE (right column) simulations (lines connect the A1B results).

Title Page

Abstract

Introduction

Conclusions

References

Tables

Figures

◀

▶

◀

▶

Back

Close

Full Screen / Esc

Printer-friendly Version

Interactive Discussion

Climate change
impact on water
resource extremes

T. Liu et al.

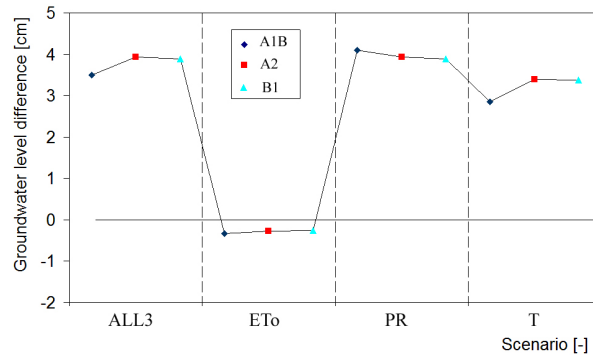


Fig. 13. Mean level of impact results on groundwater (average over the simulation; period 2000 ~ 2001 and averaged over the entire Kaidu river basin; after MIKE-SHE simulation (after changes to all or individual hydro-climatic variables)).

[Title Page](#)[Abstract](#)[Introduction](#)[Conclusions](#)[References](#)[Tables](#)[Figures](#)[◀](#)[▶](#)[◀](#)[▶](#)[Back](#)[Close](#)[Full Screen / Esc](#)[Printer-friendly Version](#)[Interactive Discussion](#)

**Climate change
impact on water
resource extremes**

T. Liu et al.

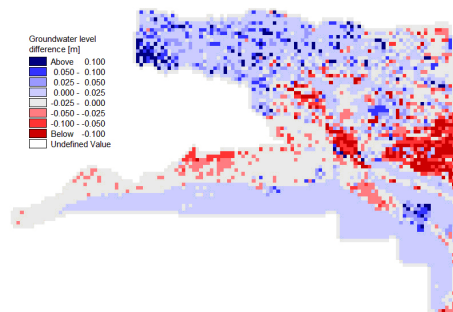


Fig. 14. Mean level of impact results (for A1B scenario) on the average groundwater level for the period 2000 ~ 2001 in the entire study area after MIKE-SHE simulation.

Title Page

Abstract

Introduction

Conclusions

References

Tables

Figures

◀

▶

◀

▶

Back

Close

Full Screen / Esc

Printer-friendly Version

Interactive Discussion



Climate change impact on water resource extremes

T. Liu et al.

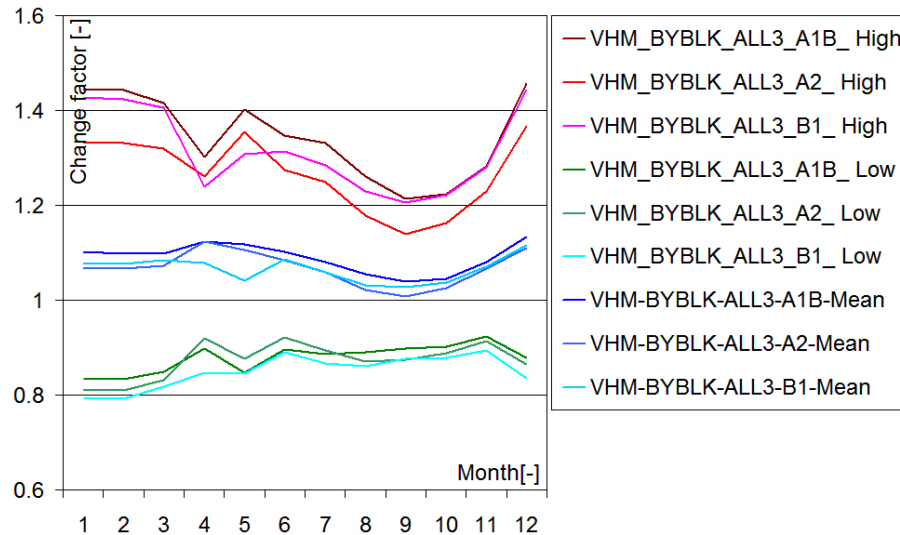


Fig. 15. The high, mean and low level of impact results on the mean monthly flows at BYBLK after VHM simulations.

Title Page

Abstract

Introduction

Conclusions

References

Tables

Figures

◀

▶

◀

▶

Back

Close

Full Screen / Esc

Printer-friendly Version

Interactive Discussion



Climate change impact on water resource extremes

T. Liu et al.

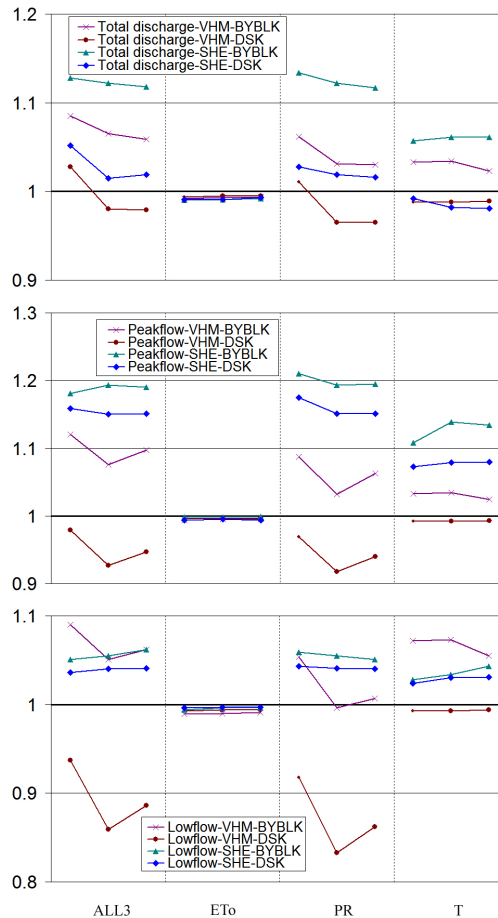


Fig. 16. Mean level of impact results on mean, peak and low flows at BYBLK and DSK gauging stations after VHM and MIKE-SHE simulations (after changes to all or individual hydro-climatic variables).

Title Page

Abstract Introduction

Conclusions References

Tables Figures

◀ ▶

◀ ▶

Back Close

Full Screen / Esc

Printer-friendly Version

Interactive Discussion



Climate change impact on water resource extremes

T. Liu et al.

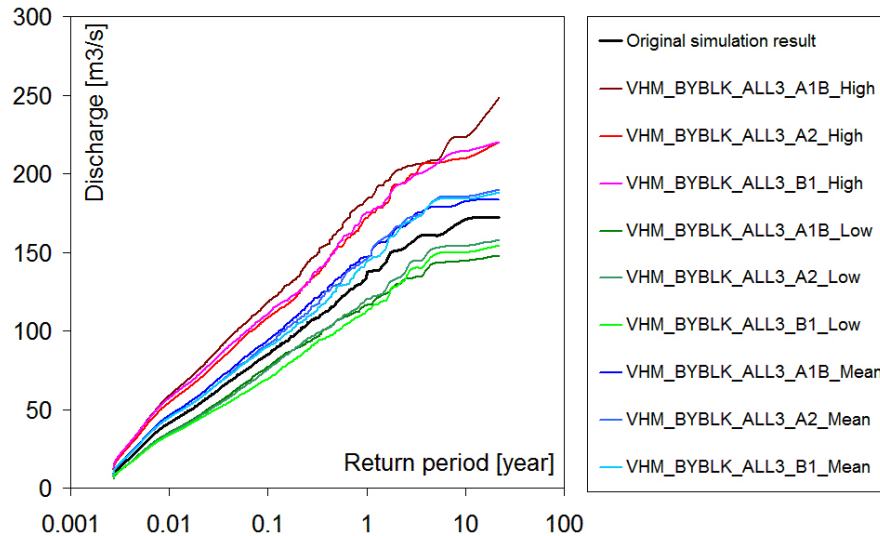


Fig. 17. Changes in empirical peak flow extreme value distribution at BYBLK station after VHM.

Discussion Paper | Discussion Paper | Discussion Paper | Discussion Paper | Discussion Paper

Title Page

Abstract

Introduction

Conclusions

References

Tables

Figures

◀

▶

◀

▶

Back

Close

Full Screen / Esc

Printer-friendly Version

Interactive Discussion

