

1 **Development of imaging-based risk scores for prediction of intracranial haemorrhage**  
2 **and ischaemic stroke in patients taking antithrombotic therapy after ischaemic stroke**  
3 **or TIA: a pooled analysis of individual patient data from cohort studies**

4  
5 Jonathan G Best MD, Gareth Ambler PhD, Duncan Wilson PhD, Keon-Joo Lee MD, Jae-Sung  
6 Lim MD, Masayuki Shiozawa MD, Masatoshi Koga MD, Linxin Li DPhil, Caroline Lovelock  
7 FRACP, Prof Hugues Chabriat MD, Prof Michael Hennerici MD, Yuen Kwun Wong MSc,  
8 Henry Ka Fung Mak MD, Luis Prats-Sanchez PhD, Alejandro Martínez-Domeño MD, Shigeru  
9 Inamura MD, Kazuhisa Yoshifuji PhD, Ethem Murat Arsava MD, Solveig Horstmann MD, Jan  
10 Purucker MD, Bonnie Yin Ka Lam PhD, Adrian Wong PhD, Young Dae Kim MD, Tae-Jin  
11 Song MD, Robin Lemmens PhD, Sebastian Eppinger MD, Thomas Gattringer MD, Ender  
12 Uysal MD, Zeynep Tanriverdi MD, Prof Natan M Bornstein MD, Einor Ben Assayag PhD,  
13 Hen Hallelevi MD, Jeremy Molad MD, Masashi Nishihara MD, Jun Tanaka MD, Prof Shelagh  
14 B. Coutts MD, Alexandros Polymeris MD, Benjamin Wagner MD, David J. Seiffge MD, Prof  
15 Philippe Lyrer MD, Prof Ale Algra MD, Prof L. Jaap Kappelle MD, Prof Rustam Al-Shahi  
16 Salman PhD, Prof Hans R Jäger FRCR, Prof Gregory Y.H. Lip MD, Prof Urs Fischer MD,  
17 Prof Marwan El-Koussy MD, Prof Jean-Louis Mas MD, Laurence Legrand MD, Christopher  
18 Karayiannis MD, Prof Thanh Phan MD, Sarah Gunkel MD, Nicolas Christ MD, Jill Abrigo  
19 MD, Prof Thomas Leung MD, Prof Winnie Chu MD, Francesca Chappell PhD, Stephen Makin  
20 PhD, Derek Hayden MD, Prof David J Williams PhD, Prof Werner H. Mess MD, Paul J.  
21 Nederkoorn MD, Carmen Barbato MD, Simone Browning BSc, Kim Wiegertjes MD, Anil M.  
22 Tuladhar MD, Noortje Maaijwee PhD, Anne Cristine Guevarra MD, Chathuri Yatawara PhD,  
23 Anne-Marie Mendyk RN, Christine Delmaire MD, Sebastian Köhler PhD, Prof Robert van  
24 Oostenbrugge MD, Ying Zhou PhD, Chao Xu MD, Saima Hilal PhD, Bibek Gyanwali MD,  
25 Christopher Chen FRCP, Prof Min Lou PhD, Julie Staals MD, Prof Régis Bordet MD,

26 Nagaendran Kandiah FRCP, Prof Frank-Erik de Leeuw MD, Robert Simister PhD, Prof Jeroen  
27 Hendrikse MD, Prof Peter J Kelly MD, Prof Joanna Wardlaw MD, Yannie Soo MD, Felix Fluri  
28 MD, Prof Velandai Srikanth PhD, Prof David Calvet MD, Prof Simon Jung MD, Vincent I.H.  
29 Kwa MD, Prof Stefan T Engelter MD, Prof Nils Peters MD, Prof Eric E Smith MD, Prof Hideo  
30 Hara PhD, Prof Yusuke Yakushiji PhD, Prof Dilek Necioglu Orken MD, Prof Franz Fazekas  
31 MD, Prof Vincent Thijs MD, Prof Ji Hoe Heo MD, Prof Vincent Mok MD, Prof Roland  
32 Veltkamp MD, Hakan Ay MD, Toshio Imaizumi MD, Beatriz Gomez-Anson FRCR, Kui Kai  
33 Lau DPhil, Prof Eric Jouvent MD, Prof Peter M. Rothwell FMedSci, Prof Kazunori Toyoda  
34 MD, Prof Hee-Joon Bae PhD, Prof Joan Marti-Fabregas PhD, and Prof David J Werring PhD,  
35 *on behalf of the Microbleeds International Collaborative Network*

36

37 Stroke Research Centre, Department of Brain Repair and Rehabilitation, UCL Queen Square  
38 Institute of Neurology, London, UK (J G Best MD, D Wilson PhD, D J Seiffge MD, C Barbato  
39 MD, Simone Browning BSc, R Simister PhD, D J Werring PhD); Department of Statistical  
40 Science, University College London, Gower Street, London, UK (G Ambler PhD); New  
41 Zealand Brain Research Institute, Christchurch, New Zealand (D Wilson PhD); Department of  
42 Neurology, Seoul National University Bundang Hospital, Seoul National University College  
43 of Medicine, Seongnam, Republic of Korea (K-J Lee MD, H-J Bae PhD); Department of  
44 Neurology, Hallym University Sacred Heart Hospital, Hallym Neurological Institute, Hallym  
45 University College of Medicine, Anyang, Republic of Korea (J-S Lim MD); Department of  
46 Cerebrovascular Medicine, National Cerebral and Cardiovascular Centre, 6-1 Kishibe-  
47 shimmachi, Suita, Osaka 564-8565, Japan (M Shiozawa MD, M Koga MD, K Toyoda MD);  
48 Wolfson Centre for Prevention of Stroke and Dementia, Nuffield Department of Clinical  
49 Neurosciences, University of Oxford, UK (L Li DPhil, C Lovelock FRACP, P M Rothwell  
50 FMedSci); APHP, Lariboisière Hospital, Department of Neurology, F-75475 Paris, France (H

51 Chabriat MD, E Jouvent MD); FHU NeuroVasc, Université de Paris and INSERM U1141,  
52 Paris, France (H Chabriat MD, E Jouvent MD); Department of Neurology, Universitätsmedizin  
53 Mannheim, University of Heidelberg, Mannheim, Germany (M Hennerici MD); Division of  
54 Neurology, Department of Medicine (Y K Wong MSc, K K Lau DPhil) and Department of  
55 Diagnostic Radiology (H K F Mak MD), The University of Hong Kong, Hong Kong;  
56 Department of Neurology, Hospital de la Santa Creu i Sant Pau, Biomedical Research Institute,  
57 Barcelona, Spain (L Prats-Sanchez PhD, A Martínez-Domeño MD, J Marti-Fabregas PhD);  
58 Department of Neurosurgery, Kushiro City General Hospital, Kushiro, Japan (S Inamura MD,  
59 K Yoshifuji PhD, T Imaizumi MD); Departments of Neurology and Radiology, Massachusetts  
60 General Hospital, Harvard Medical School, Boston MA, USA (EM Arsava MD); Department  
61 of Neurology, Heidelberg University Hospital, Heidelberg, Germany (S Horstmann MD, J  
62 Purucker MD); Therese Pei Fong Chow Research Centre for Prevention of Dementia, Gerald  
63 Choa Neuroscience Centre, Lui Che Woo Institute of Innovative Medicine, Department of  
64 Medicine and Therapeutics, The Chinese University of Hong Kong, Hong Kong (B Y K Lam  
65 PhD, A Wong PhD, V Mok MD); Department of Neurology, Yonsei University College of  
66 Medicine, Seoul, South Korea (Y D Kim MD, J H Heo MD); Department of Neurology, Seoul  
67 Hospital, Ewha Womans University College of Medicine, Seoul, South Korea (T-J Song MD);  
68 Experimental Neurology, Department of Neurosciences, KU Leuven – University of Leuven;  
69 VIB Center for Brain & Disease Research; Department of Neurology, University Hospitals  
70 Leuven, Leuven, Belgium (R Lemmens PhD); Department of Neurology, Medical University  
71 of Graz, Auenbruggerplatz 22, 8036 Graz, Austria (S Eppinger MD, T Gatteringer MD, F  
72 Fazekas MD); Sağlık Bilimleri University Sisli Etfal Education and Research Hospital  
73 Department of Radiology, Istanbul, Turkey (E Uysal MD); İzmir Katip Çelebi University  
74 Atatürk Education and Research Hospital Department of Neurology, İzmir Turkey (Z  
75 Tanriverdi MD); Department of Neurology, Tel-Aviv Sourasky Medical Center, Tel-Aviv,

76 Israel; Sackler Faculty of Medicine, Tel-Aviv University, Tel-Aviv, Israel (N M Bornstein MD,  
77 E Ben Assayag PhD, H Hallevi MD, J Molad MD); Department of Radiology (M Nishihara  
78 MD) and Division of Neurology, Department of Internal Medicine (J Tanaka MD, H Hara PhD,  
79 Y Yakushiji PhD), Saga University Faculty of Medicine, 5-1-1, Nabeshima, Saga, Japan;  
80 Calgary Stroke Program, Department of Clinical Neurosciences, Radiology and Community  
81 Health Sciences, Hotchkiss Brain Institute, University of Calgary (S B Coutts MD, E E Smith  
82 MD); Department of Neurology and Stroke Centre, University Hospital Basel and University  
83 of Basel, Switzerland (A Polymeris MD, B Wagner MD, D J Seiffge MD, P Lyrer MD, S T  
84 Engelter MD, N Peters MD); Julius Centre for Health Sciences and Primary Care (A Algra  
85 MD) and Department of Neurology and Neurosurgery (A Algra MD, L J Kappelle MD),  
86 University Medical Centre Utrecht and Utrecht University, Utrecht, The Netherlands; Centre  
87 for Clinical Brain Sciences, School of Clinical Sciences, University of Edinburgh, Edinburgh,  
88 UK (R Al-Shahi Salman PhD); Lysholm Department of Neuroradiology and the  
89 Neuroradiological Academic Unit, Department of Brain Repair and Rehabilitation, UCL  
90 Institute of Neurology and the National Hospital for Neurology and Neurosurgery, London,  
91 UK (H R Jäger FRCR); Liverpool Centre for Cardiovascular Science, University of Liverpool  
92 and Liverpool Heart & Chest Hospital, Liverpool, United Kingdom (G Y H Lip MD); Aalborg  
93 Thrombosis Research Unit, Department of Clinical Medicine, Aalborg University, Aalborg,  
94 Denmark (G Y H Lip MD); Department of Neurology (D J Seiffge MD, U Fischer MD, S Jung  
95 MD) and Department of Diagnostic and Interventional Neuroradiology (M El-Koussy MD),  
96 University Hospital Inselspital Bern, University of Bern, Bern, Switzerland; Department of  
97 Neurology (J-L Mas MD, D Calvet MD) and Department of Neuroradiology (L Legrand MD),  
98 Sainte-Anne Hospital, Institut de Psychiatrie et Neurosciences de Paris (IPNP), UMR\_S1266,  
99 INSERM, Université de Paris, F-75014, Paris, France; Peninsula Clinical School, Peninsula  
100 Health (C Karayiannis MD, V Srikanth PhD) and Stroke and Ageing Research Group, School

101 of Clinical Sciences at Monash Health (T Phan MD), Monash University, Melbourne,  
102 Australia; Department of Neurology, University Hospital of Würzburg, Josef-Schneider  
103 Strasse 11, 97080, Würzburg, Germany (S Gunkel MD, N Christ MD, F Fluri MD); Department  
104 of Imaging and Interventional Radiology (J Abrigo MD, W Chu MD) and Department of  
105 Medicine and Therapeutics (T Leung MD, Y Soo MD), Prince of Wales Hospital, The Chinese  
106 University of Hong Kong, Hong Kong; Centre for Clinical Brain Sciences, Edinburgh Imaging;  
107 and UK Dementia Institute at the University of Edinburgh, Edinburgh, UK (F Chappell PhD,  
108 J Wardlaw MD); Institute of Applied Health Sciences, University of Aberdeen, Aberdeen, UK.  
109 (S Makin PhD); The Neurovascular Research Unit and Health Research Board, Stroke Clinical  
110 Trials Network Ireland, University College Dublin, Dublin (D Hayden MD, P J Kelly MD);  
111 Department of Medical Gerontology, Trinity College Dublin, College Green, Dublin 2, Ireland  
112 (D Hayden MD); Department of Geriatric and Stroke Medicine, RCSI University of Medicine  
113 and Health Sciences Dublin, Ireland and Beaumont Hospital Dublin, Ireland (D J Williams  
114 PhD); Department of Clinical Neurophysiology, Maastricht University Medical Centre,  
115 Maastricht, the Netherlands (W H Mess MD); Department of Neurology, Amsterdam  
116 University Medical Centres, Location AMC, The Netherlands (P J Nederkoorn MD);  
117 Comprehensive Stroke Service, University College London Hospitals NHS Trust, London, UK  
118 (C Barbato MD, S Browning BSc, R Simister PhD); Department of Neurology, Donders  
119 Institute for Brain, Cognition and Behaviour, Donders Centre for Medical Neuroscience,  
120 Radboud University Medical Center, Nijmegen, The Netherlands (K Wiegertjes MD, A M  
121 Tuladhar MD, F-E de Leeuw MD); Lucerne State Hospital, Switzerland; Neurocenter,  
122 Department for Neurology and Neurorehabilitation, Lucerne, Switzerland (N Maaijwee PhD);  
123 Department of Neurology, National Neuroscience Institute, Singapore, Singapore (A C  
124 Guevarra MD, C Yatawara PhD, N Kandiah FRCP); University of Lille, Inserm, CHU de Lille.  
125 'Degenerative and vascular cognitive disorders' U1171. F-59000 Lille (A-M Mendyk RN, C

126 Delmaire MD, R Bordet MD); Department of Radiology. Fondation A de Rothschild. F-75019  
127 Paris (C Delmaire MD); Department of Psychiatry and Neuropsychology, School for Mental  
128 Health and Neuroscience (S Köhler PhD) and Department of Neurology, Cardiovascular  
129 Research Institute Maastricht (CARIM) (R van Oostenbrugge MD, J Staals MD), Maastricht  
130 University Medical Centre, The Netherlands; Department of Neurology, The Second Affiliated  
131 Hospital of Zhejiang University, School of Medicine (Y Zhou PhD, C Xu MD, M Lou PhD);  
132 Memory Aging & Cognition Centre, Yong Loo Lin School of Medicine, National University  
133 of Singapore, Singapore (S Hilal PhD, B Gyanwali MD, C Chen FRCP); University Medical  
134 Centre Utrecht, Utrecht University, The Netherlands (J Hendrikse MD); Department of  
135 Neurology, Onze Lieve Vrouwe Gasthuis, Amsterdam, The Netherlands (V I H Kwa MD);  
136 Neurology and Neurorehabilitation, University Department of Geriatric Medicine FELIX  
137 PLATTER; University of Basel, Switzerland (S T Engelter MD, N Peters MD); Department of  
138 Neurology, Kansai Medical University, 2-5-1 Shinmachi, Hirakata, Osaka 573-1010, Japan (Y  
139 Yakushiji PhD); Memorial Sisli Hospital, Department of Neurology, Istanbul, Turkey (D N  
140 Orken MD); Stroke Division, Florey Institute of Neuroscience and Mental Health, University  
141 of Melbourne, Heidelberg (V Thijs MD); Department of Neurology, Austin Health,  
142 Heidelberg, Australia (V Thijs MD); Department of Brain Sciences, Imperial College London,  
143 London, UK (R Veltkamp MD); Department of Neurology, Heidelberg University Hospital,  
144 Heidelberg, Germany (R Veltkamp MD); A.A. Martinos Center for Biomedical Imaging,  
145 Departments of Neurology and Radiology, Massachusetts General Hospital, Harvard Medical  
146 School, Boston, MA, USA (H Ay MD); Takeda Pharmaceutical Company Limited,  
147 Cambridge, MA, USA (H Ay MD); Unit of Neuroradiology, Hospital Santa Creu i Sant Pau,  
148 Universitat Autònoma, Barcelona (B Gomez-Anson FRCR)  
149

150 **Correspondence to:** Professor David J Werring, UCL Stroke Research Centre, Department of  
151 Brain Repair and Rehabilitation, UCL Queen Square Institute of Neurology, Russell Square  
152 House, 10 – 12 Russell Square, London WC1B 5EH, UK; d.werring@ucl.ac.uk

153

154 **Word count:**

155 Manuscript: 3,448

156 Abstract: 298

157 Research in context panel: 445

158 **Abstract**

159

160 **Background** Balancing the risks of recurrent ischaemic stroke (IS) and intracranial  
161 haemorrhage (ICH) is important for patients treated with antithrombotic therapy after  
162 ischaemic stroke or transient ischaemic attack. However, existing predictive models offer  
163 limited performance, particularly for ICH. We aimed to develop new risk scores incorporating  
164 clinical variables and cerebral microbleeds (CMBs), an MRI biomarker of ICH and IS risk.

165

166 **Methods** We did a pooled analysis of individual-patient data from the Microbleeds  
167 International Collaborative Network, which comprises 38 hospital-based prospective cohort  
168 studies from 18 countries. All studies recruited participants with previous IS or TIA, acquired  
169 baseline MRI allowing quantification of CMBs, and followed up participants for IS and ICH.  
170 We excluded participants not taking antithrombotic drugs. We developed Cox regression  
171 models to predict the five-year risks of ICH and IS, selecting candidate predictors on biological  
172 relevance and simplifying models using backward elimination. We derived integer risk scores  
173 for clinical use. We assessed model performance in internal validation, adjusted for optimism  
174 using bootstrapping. We registered the study with the PROSPERO register of systematic  
175 reviews (registration: CRD42016036602).

176

177 **Findings** The included studies recruited participants between 28<sup>th</sup> August 2001 and 4<sup>th</sup>  
178 February 2018. 15,766 participants had follow-up for ICH, and 15,784 for IS. Over a median  
179 follow-up of two years, 184 ICH and 1,048 IS occurred. The risk models we developed  
180 included CMB burden and simple clinical variables. Optimism-adjusted c-indices were 0.73  
181 (95% CI 0.69-0.77) for ICH and 0.63 for IS (95% CI 0.62-0.65); calibration slopes were 0.94  
182 (95% CI 0.81-1.06) and 0.97 (95% CI 0.87-1.07) respectively, indicating good calibration.

183



184 **Interpretation** The MICON risk scores, incorporating clinical variables and CMBs, offer  
185 predictive value for the long-term risks of ICH and ischaemic stroke in patients prescribed  
186 antithrombotic therapy for secondary stroke prevention. External validation is warranted.

187

188 **Funding** British Heart Foundation and Stroke Association

## 189 **Research in context**

190

### 191 *Evidence before this study*

192 We searched Medline from 1<sup>st</sup> January 1996 to 1<sup>st</sup> February 2020 using the following search  
193 strategy: (stroke[tiab] OR bleeding[tiab] OR haemorrhage[tiab] OR hemorrhage[tiab]) AND  
194 (prediction[tiab] OR risk stratification[tiab] OR risk score[tiab]). We identified studies in  
195 English which described or validated risk scores for ischaemic stroke or major bleeding, in  
196 patients taking antiplatelets or anticoagulants, with or without atrial fibrillation. Very few  
197 studies of bleeding risk scores reported their performance for intracranial haemorrhage  
198 specifically. A large cohort study (n=40,450) of patients with atrial fibrillation anticoagulated  
199 for stroke prevention found poor performance in predicting ICH for all bleeding risk scores  
200 assessed, including HEMORR2HAGES, HAS-BLED, ATRIA and ORBIT. The highest c-  
201 index obtained was 0.53, for HASBLED. A nationwide registry-based cohort study  
202 (n=182,678) assessing HASBLED and HEMORRH2HAGES in patients with atrial fibrillation  
203 also found limited performance, with c-indices between 0.58 and 0.62 in participants  
204 prescribed antithrombotics. Models developed for predicting ICH in patients taking  
205 antiplatelets specifically (including Intracranial-B2LEED3S and S2TOP-BLEED) also showed  
206 only moderate performance, with the highest reported c-index being 0.65, for S2TOP-BLEED.  
207 Risk scores for ischaemic stroke (including CHADS<sub>2</sub>, CHAD<sub>2</sub>S<sub>2</sub>VASc and ATRIA) performed  
208 moderately, with c-indices typically between 0.60 and 0.70.

209

### 210 *Added value of this study*

211 We present new clinical-radiological risk scores using cerebral microbleeds, an MRI marker  
212 of small vessel fragility, to predict ICH and ischaemic stroke in patients taking antithrombotic  
213 drugs for secondary prevention after ischaemic stroke or transient ischaemic attack, derived

214 from studies in the Microbleeds International Network (MICON), a large international  
215 collaboration of prospective cohort studies. The performance of our MICON-ICH score  
216 suggests it can usefully stratify patients by risk of antithrombotic-associated ICH in clinical  
217 practice. Our results also suggest that cerebral microbleeds add considerable value for  
218 predicting ICH, but not ischaemic stroke, clarifying the relative predictive importance of  
219 cerebral microbleeds for these outcomes. Our scores did not identify many patients with similar  
220 or greater predicted risk of ICH than ischaemic stroke, even in those with high cerebral  
221 microbleed burden and other risk factors. Our MICON scores are simple and widely applicable.

222

### 223 *Implications of all the available evidence*

224 Risk scores including cerebral microbleeds offer increased discrimination over clinical  
225 variables alone for the prediction of antithrombotic-associated ICH in a large, multicentre,  
226 international population. Although external validation is needed, this finding provides new  
227 evidence of how neuroimaging biomarkers can contribute to clinical prediction models.  
228 Identifying people at highest risk of ICH may facilitate timely and accurate prognostication to  
229 allow mitigation of reversible risk factors for bleeding (e.g. intensive blood pressure control),  
230 and selection of participants for clinical trials. While more complex combinations of clinical,  
231 biochemical, and radiological markers might further improve stroke risk prediction, balancing  
232 accuracy with simplicity will remain important.

233

234

235

236

237

238

## 239 **Introduction**

240

241 Antithrombotic therapy is a key component of secondary prevention after ischaemic stroke or  
242 transient ischaemic attack. In patients without atrial fibrillation (AF), antiplatelet treatment  
243 reduces overall stroke risk by one-quarter,<sup>1</sup> while oral anticoagulation in patients with AF  
244 reduces this risk by two-thirds.<sup>2,3</sup> Although antithrombotic treatment increases the risk of  
245 intracranial haemorrhage (ICH) (by around one-quarter for antiplatelets, one-half for direct oral  
246 anticoagulants (DOACs), and two-fold for vitamin K antagonists (VKAs)),<sup>1-3</sup> the substantially-  
247 lower incidence of ICH overall means that antithrombotic treatment is recommended for most  
248 patients. However, deciding on appropriate antithrombotic therapy for a given patient can be  
249 challenging, especially in those with additional risk factors for bleeding. Ideally, this decision  
250 would be based on an individualised assessment of the risks of ischaemic stroke and ICH. To  
251 this end, risk scores for ischaemic stroke and major bleeding have been developed, mainly in  
252 patients with AF. Although these scores show reasonable discrimination for ischaemic stroke<sup>4,5</sup>  
253 and all-cause major bleeding,<sup>5,6</sup> studies validating existing bleeding risk scores in predicting  
254 ICH have shown more limited performance, with c-indices between 0.50 and 0.62 in  
255 anticoagulated patients,<sup>7,8</sup> and 0.58 – 0.65 in patients taking antiplatelet drugs.<sup>8,9</sup>

256 Most risk scores for ischaemic stroke and ICH only include clinical variables. More recently,  
257 scores using serum biomarkers have been developed, which may offer improved  
258 performance.<sup>10-12</sup> However, the role of magnetic resonance imaging (MRI) biomarkers for  
259 cerebrovascular disease (increasingly obtained as part of standard stroke care) in improving  
260 risk prediction remains uncertain. Cerebral microbleeds (CMBs) are an MRI biomarker of  
261 vascular fragility, associated with hypertensive microangiopathy (also known as  
262 arteriolosclerosis or deep perforator arteriopathy) and cerebral amyloid angiopathy, the two  
263 cerebral small vessel diseases that cause most spontaneous intracerebral haemorrhage.<sup>13</sup>

264 Accordingly, the potential of CMBs in predicting ICH has attracted particular interest. In a  
265 prospective observational study, the addition of CMB presence improved the c-index for ICH  
266 of the HASBLED bleeding risk score from 0.41 to 0.66,<sup>14</sup> while a recent large individual  
267 patient data meta-analysis confirmed a strong association between CMBs and ICH in patients  
268 with previous ischaemic stroke or TIA.<sup>15</sup> This study also found that CMBs are associated with  
269 IS risk, with a higher absolute risk of ischaemic stroke than ICH across all levels of CMB  
270 burden investigated.

271 Given these findings, we aimed to establish the added predictive value of CMBs for ICH and  
272 ischaemic stroke, by using the same large international dataset to develop risk models based  
273 on CMB burden and simple clinical variables, and to compare these to models using clinical  
274 variables alone. We aimed to derive from our models simple risk scores which could be easily  
275 used for risk stratification in clinical practice. We investigated whether the resulting scores  
276 identified a group of patients at similar or higher predicted risk of ICH than ischaemic stroke,  
277 and whether they performed better than existing risk scores.

278

## 279 **Methods**

280

### 281 *Study design and participants*

282 We used pooled individual patient data from the Microbleeds International Collaborative  
283 Network (MICON) of prospective observational studies, for which the full methodology and  
284 composition has been published.<sup>15</sup> Briefly, MICON comprises 38 cohorts from 18 countries in  
285 North America, Europe, the Middle East, Asia, and Australasia, collectively including 20,322  
286 participants with previous ischaemic stroke or TIA, baseline MRI including blood-sensitive  
287 paramagnetic sequences to detect CMBs, and at least three months' follow-up for ischaemic  
288 stroke, ICH, or a composite of both. We identified eligible cohorts through a systematic search  
289 of Medline and Embase from 01/01/1996 to 01/12/2018, clinical trial databases, scientific

290 abstracts, and the international METACOHORTS consortium of studies in cerebral small  
291 vessel disease.<sup>16</sup> Published and unpublished studies were eligible. We assessed all studies  
292 identified for quality and risk of bias, including selection bias, using the Cochrane  
293 Collaboration tool.<sup>17</sup> All included studies adjudicated events blinded to CMB burden. In the  
294 current prediction model development study, we included all MICON participants who were  
295 taking antithrombotic therapy and were followed up separately for ischaemic stroke or ICH.  
296 The study was approved by the UK Health Research Authority (reference: 8/HRA/0188).  
297 Included cohorts obtained ethical and regulatory approvals according to local requirements.  
298 Only fully-anonymised data was shared, so that individual consent was not required for this  
299 individual patient data pooled analysis. We registered the study protocol with the PROSPERO  
300 register of systematic reviews on April 5, 2016 (registration number: CRD42016036602,  
301 [https://www.crd.york.ac.uk/prospero/display\\_record.php?RecordID=36602](https://www.crd.york.ac.uk/prospero/display_record.php?RecordID=36602)).

302

### 303 *Outcomes*

304 Our outcomes for prediction were the five-year risks of symptomatic ICH (including  
305 intracerebral, subdural, subarachnoid, and extradural haemorrhage) and ischaemic stroke  
306 (excluding TIA).

307

### 308 *Prediction model development*

309 We developed separate prediction models for ICH and ischaemic stroke using Cox regression,  
310 with robust standard errors calculated using the Huber-White sandwich estimator to allow for  
311 clustering within cohorts.<sup>18</sup> We prespecified our candidate predictors, based on biological  
312 relevance and availability in the majority of our cohort, as: age; sex; presentation with transient  
313 ischaemic attack or ischaemic stroke; clinical history of hypertension; clinical history of type  
314 1 or type 2 diabetes mellitus; previous ischaemic stroke before index stroke or TIA; previous

315 ICH; known AF; antithrombotic treatment after index event; CMB burden.; and type of MRI  
316 sequence used to detect CMBs (2D T2\*-weighted gradient-recall echo (GRE) or susceptibility-  
317 weighted imaging (SWI, also including SWAN, SWIp and VenoBOLD sequences), in view of  
318 strong external evidence that CMB counts are systematically higher on these sequences than  
319 on GRE (*appendix, p 3*). We accounted for missing data using multiple imputation with chained  
320 equations (five imputations). We included a cluster-level variable indicating East Asian centres  
321 (Japan, Korea, China and South-East Asia), given the higher incidence of intracerebral  
322 haemorrhage and intracranial atherosclerosis in this region.<sup>19</sup> We categorised antithrombotic  
323 treatment as antiplatelet therapy only, anticoagulation with a VKA, or anticoagulation with a  
324 DOAC. The antiplatelet category included patients taking dual antiplatelets, and anticoagulant  
325 categories included participants taking a concomitant antiplatelet. We categorised CMB burden  
326 as none, one, two to four, five to ten, 11-19, and 20 or more, and assessed whether an interaction  
327 term between MRI sequence type and CMB burden was required. We investigated whether  
328 separate models were required for patients taking anticoagulants or antiplatelets using  
329 interaction terms and Wald tests. We simplified our models through backwards elimination at  
330 the 20% level ( $p=0.20$ ). We scaled and rounded regression coefficients to produce integer  
331 scores for ease-of-use in clinical practice.

332

### 333 *Statistical analyses*

334 We internally validated our models using bootstrapping.<sup>20</sup> As an additional test of model  
335 performance, we did internal-external cross validation,<sup>21,22</sup> using five folds consisting of whole  
336 cohorts, repeated 20 times to reduce variance. We quantified discrimination using Harrell's c-  
337 index, and calibration through the calibration slope. We further assessed calibration by  
338 calculating predicted five-year risk for each outcome on the basis of the integer risk score,

339 dividing participants into lower, intermediate and highest-risk groups of roughly equal sizes,  
340 and comparing predicted to observed risk using Kaplan-Meier plots.

341 To test the contribution of CMB burden to ICH and ischaemic stroke prediction, we developed  
342 purely clinical models in the same way as our main models, but excluding CMB burden and  
343 MRI sequence type. We compared their discrimination to our main models, and tested if adding  
344 CMB burden and MRI sequence type improved their fit. Next, we compared the performance  
345 of our CMB-based ICH risk score (the form of our model that could most easily be used in  
346 clinical practice) to existing bleeding risk scores (ATRIA, ORBIT and HASBLED). Each  
347 comparison used all participants for whom the additional variables required for calculation of  
348 the existing bleeding risk score were available. To apply HASBLED to patients not taking  
349 vitamin K antagonists, we scored the ‘labile INR’ component as 0. As we made these  
350 comparisons in a subset of the model development data, we adjusted for optimism using  
351 bootstrapping.

352 We performed two sensitivity analyses. Firstly, we assessed the added predictive value of  
353 additional variables that we considered potentially clinically relevant by adding each variable  
354 individually to our final model for each outcome and testing if it improved model fit using a  
355 Wald test<sup>23</sup>, before comparing the discrimination of the base and augmented models if it did.  
356 The additional variables were: clinical history of hypercholesterolaemia; current smoking  
357 status; CMB distribution (strictly deep, strictly lobar, and mixed); and burden of white matter  
358 hyperintensities on MRI assessed using the highest recorded Fazekas score from periventricular  
359 and deep white matter regions. Secondly, we tested the performance of our ICH model for  
360 intracerebral haemorrhage specifically.

361 Finally, we determined the number of participants with a predicted risk of ICH greater than  
362 that of ischaemic stroke, and investigated their baseline characteristics.



363 Our statistical analyses used Stata version 16, and are reported following the TRIPOD  
364 guideline.<sup>24</sup>

365

#### 366 *Role of the funding source*

367 The funders of the study had no role in its design, the collection, analysis and interpretation of  
368 data, the writing of the report, or the decision to submit it for publication. All authors had full  
369 access to all the data in the study and final responsibility for the decision to submit for  
370 publication.

371

## 372 **Results**

373

374 *Figure 1* describes the identification of studies in the MICON collaboration. From all 38 studies  
375 and 20,322 participants in the collaboration, we excluded one study comprising 3,335  
376 participants that collected follow-up for a composite ‘any stroke’ outcome only. From the  
377 remaining 37 cohorts, we excluded 979 participants not taking antithrombotic medication, and  
378 a further 204 participants lacking follow-up for both ICH and ischaemic stroke, leaving a final  
379 study population of 15,784 participants, recruited between 28<sup>th</sup> August 2001 and 4<sup>th</sup> February  
380 2018. Their characteristics are summarised in *Table 1*, and described by cohort in *appendix*  
381 *pp4-6*. All 15,784 participants had follow-up for ischaemic stroke, and 15,766 had follow-up  
382 for ICH. We imputed 2,747/15,784 (17.4%) observations for previous ICH, 2,002/15,784  
383 (12.7%) for diabetes, and 1,097/15,784 (6.6%) for ischaemic stroke before index ischaemic  
384 stroke or TIA. We imputed fewer than 1% of observations for all other candidate predictors.  
385 During a total follow-up of 32,001 person-years for ICH (median 1.99yrs, IQR 0.61-2.87) and  
386 31,468 person-years for ischaemic stroke (median 1.98yrs, IQR 0.56-2.80), 184 ICH

387 (including 146 intracerebral haemorrhages) and 1,048 ischaemic strokes occurred. The  
388 annualised incidences were 0.57% for ICH, and 3.33% for ischaemic stroke.

389 *Table 2* shows the hazard ratios from our final models for ICH and IS, and the resulting integer  
390 risk scores. Both models included age, CMB burden, MRI sequence type used to assess CMB  
391 burden, history of ischaemic stroke prior to the index ischaemic stroke or TIA, and East Asian  
392 centre location. Our ICH model also included previous ICH and antithrombotic treatment type.  
393 We chose to retain antithrombotic treatment in this model on clinical grounds. Our ischaemic  
394 stroke model also included presentation with ischaemic stroke and history of diabetes mellitus,  
395 and we found strong evidence of an interaction between antiplatelet treatment and AF ( $p =$   
396  $0.0040$ ), consistent with the known superior efficacy of anticoagulants for stroke prevention in  
397 AF. We represented this in our model by combining AF, antithrombotic treatment type, and  
398 their interaction into a single four-level variable, as the hazard ratios for DOAC and VKA  
399 treatment were very similar. *Appendix p7* shows the results of our other tests for interactions.  
400 Apart from an interaction for ICH risk between antiplatelet use and previous ICH ( $p = 0.011$ ),  
401 which we attributed to treatment bias and chose to exclude, we found no compelling evidence  
402 that other interaction terms were required.

403 The optimism-adjusted c-index for our final ICH model was 0.73 (95% CI 0.69–0.77), and the  
404 calibration slope 0.94 (95% CI 0.81–1.06), indicating moderate discrimination and excellent  
405 calibration. For our final ischaemic stroke model, the c-index was 0.63 (95% CI 0.62–0.65)  
406 and the calibration slope 0.97 (95% CI 0.87–1.07), indicating reasonable discrimination and  
407 excellent calibration.

408 In internal-external cross-validation, mean discrimination for ICH was 0.71, with a slightly  
409 reduced mean calibration slope (0.85), partly explained by the reduced sample for model  
410 development. Mean discrimination for IS was 0.60 and the mean calibration slope 0.76. For  
411 each outcome, after combining participants into three groups on the basis of their total risk

412 score, we observed excellent agreement between predicted and observed risk (*Figure 2,*  
413 *appendix p 10*). *Figure 3 and appendix p11* show detailed calibration results for each outcome  
414 across ten similarly-sized groups. Absolute ICH risk was moderately over-predicted in the  
415 highest-risk decile. As 98.2% of participants received the same prediction across all five  
416 imputations, we show calibration plots for the first imputation only.

417 The clinical-only models generated for comparison with our main, MRI-based models,  
418 included the same variables as the main models apart from CMB burden and MRI sequence  
419 type. The clinical-only model for ICH showed reduced model fit and substantially lower  
420 discrimination (difference in c-index 0.05, 95% CI 0.02 – 0.09,  $p < 0.0001$ ). The clinical-only  
421 model for ischaemic stroke showed worse model fit ( $p = 0.00020$ ) but similar discrimination  
422 ( $c = 0.63$  (95% CI 0.61–0.64)).

423 *Table 3* shows the results of comparisons between our new ICH risk score and the HASBLED,  
424 ORBIT and ATRIA risk scores. Eleven cohorts from eight countries contributed to the  
425 comparison for HASBLED, and eight cohorts from six countries to the comparison for ATRIA  
426 and ORBIT. All comparisons included East Asian and European centres. For each comparison,  
427 the estimate for the c-index of the new ICH risk score was higher, both in participants taking  
428 any antithrombotics and when restricted to participants taking OAC. The optimism-adjusted  
429 difference in c-index was substantial (range: 0.04 – 0.27) in all comparisons (*Table 3*), though  
430 estimates were imprecise and the 95% confidence interval for comparisons with ATRIA and  
431 ORBIT did not exclude 0.

432 In our planned sensitivity analyses, we found no evidence that any of the additional variables  
433 tested improved model fit for ICH or ischaemic stroke (*appendix p 8*). The optimism-adjusted  
434 c-index of our ICH model in predicting intracerebral haemorrhage specifically (rather than  
435 intracranial haemorrhage in general) was 0.77 (95% CI 0.73–0.81), with calibration slope 0.95  
436 (0.83–1.07). Having found evidence that using information on CMB burden from MRI

437 improves ICH prediction, we performed an additional sensitivity analysis testing the  
438 performance of our ICH prediction model according to MRI sequence type used. Performance  
439 was acceptable in both groups (*appendix p12*).

440 Of 11,953 participants for whom both risk scores could be calculated without imputed data,  
441 only 104 (0.87%) were in the 'highest risk' tertile for ICH and the 'lower risk' tertile for  
442 ischaemic stroke, in which the predicted five-year risks of ICH and ischaemic stroke were  
443 similar (6.7% and 7.2% respectively). Their baseline characteristics are described in *appendix*  
444 *p9*. An additional 999/11,953 participants (8.4%) were allocated to the 'highest risk' group for  
445 ICH and the 'intermediate risk' group for ischaemic stroke (predicted five-year risks 6.7% and  
446 11.6% respectively). *Appendix p13* shows the full distribution of risk score predictions.

447

## 448 **Discussion**

449

450 Our most important result is the description of a novel risk score (MICON-ICH), including  
451 clinical variables and MRI-detected cerebral microbleeds, to predict ICH in patients taking  
452 antithrombotic therapy after ischaemic stroke or transient ischaemic attack. The addition of  
453 CMBs to a score based on clinical variables alone substantially improved performance, while  
454 a direct comparison with three existing bleeding risk scores also suggested superior  
455 discrimination of the new ICH risk score. Our risk score for ischaemic stroke showed modest  
456 discrimination, and CMBs appeared less important for predicting IS than ICH; nevertheless,  
457 this score can be used alongside our ICH score for straightforward and simultaneous estimation  
458 of ICH and ischaemic stroke risk. Both our scores showed excellent calibration in bootstrap  
459 validation, providing accurate estimates of absolute risk across low, medium, and high-risk  
460 groups. Discrimination was similar and calibration remained acceptable in internal-external  
461 validation. A sensitivity analysis suggested that our ICH score might show higher

462 discrimination for the prediction of intracerebral haemorrhage specifically, the most serious  
463 form of non-aneurysmal ICH and the form most closely associated with cerebral microbleeds.  
464 Overall, the performance of our scores suggests they may be useful to estimate stroke risk and  
465 inform prognostication in clinical practice.

466 Our scores have several features to ensure their ease-of-use in the clinical setting. Most  
467 importantly, they are simple: the clinical variables used are a standard part of the medical  
468 history for any stroke patient, and CMBs are familiar in stroke clinical practice (for example,  
469 in the diagnosis of cerebral amyloid angiopathy). CMBs are discrete lesions, which can be  
470 counted with very good inter-rater reliability,<sup>25</sup> and the blood-sensitive GRE and SWI  
471 sequences required to image them (accounted for in our scores) are quick to acquire, widely  
472 available, and part of routine stroke imaging protocols in many centres. This offers an  
473 advantage over the use of serum biomarkers not usually measured clinically, as in the ABC  
474 bleeding score.<sup>9</sup> Our scores include relatively few variables, allowing diagrammatic  
475 representation for quick reference (*appendix pp14-15*) and easy conversion to an online  
476 calculator or app. Finally, our scores are applicable to nearly all ischaemic stroke or TIA  
477 patients, whether taking antiplatelets or anticoagulants, with or without AF.

478 Our scores are intended for use in patients in whom antithrombotic treatment is planned after  
479 ischaemic stroke or TIA. They are not applicable to patients in whom antithrombotic treatment  
480 is contraindicated, or for patients taking antithrombotics for primary prevention. They are not  
481 designed to help select the type of antithrombotic therapy to use (i.e. antiplatelet or  
482 anticoagulant), as this would require randomised data, rather observational data in which the  
483 relationship between antithrombotic type and outcomes is attenuated by selection bias. Rather,  
484 the MICON risk scores should be used to assess prognosis to inform clinical discussions and  
485 other aspects of care once the intended antithrombotic treatment has been chosen. The finding  
486 of a high predicted ICH risk might lead to more aggressive treatment of modifiable bleeding

487 risk factors, such as hypertension and alcohol intake, review of concurrent medication, and  
488 consideration of non-pharmacological stroke prevention strategies if applicable, such as left  
489 atrial appendage occlusion in patients with AF. Our scores might also have applications in the  
490 selection of patients at high ICH risk for future clinical trials and mechanistic studies of ICH.  
491 The principal methodological strength of our study is the use of a large, multi-centre and truly  
492 international study population, increasing generalisability and allowing us to consider regional  
493 differences in stroke risk. We screened the prospective studies included for quality and risk of  
494 bias. These offered standardised baseline assessment and ascertainment of outcome events  
495 within each cohort, an advantage over registry-based studies, while we accounted statistically  
496 for within-cohort clustering. We performed both internal validation using bootstrapping and  
497 internal-external cross-validation, in accordance with TRIPOD guidelines and expert  
498 recommendations.<sup>22, 24</sup> While we omitted some potentially clinically relevant variables from  
499 our model due to missing data, additional analyses suggested this did not reduce model  
500 performance.

501 We acknowledge the limitations of our study. In particular, to maximise precision we used all  
502 available data to develop our scores. External validation of our scores in new data should be  
503 undertaken. While we compared our new ICH score to three existing bleeding risk scores,  
504 further comparison in a large, truly independent cohort would clarify the relative performance  
505 of these scores. Our model is applicable to antiplatelet and anticoagulant-treated patients, but  
506 we lacked data to make direct comparison with antiplatelet-specific scores such as Intracranial-  
507 B2LEED3S and S2TOP-BLEED,<sup>9, 26-28</sup> which should also be undertaken. Although large, our  
508 study cohort contained relatively few patients with very high CMB counts, reducing the  
509 precision of our estimates for ICH and ischaemic stroke risk in very high-risk categories. We  
510 lacked data on MRI field strength, which can influence CMB count, and on some additional  
511 risk factors which might have improved identification of high risk patients, notably cortical

512 superficial siderosis, alcohol abuse, renal insufficiency and labile INR in VKA-treated patients.  
513 Hypertension, diabetes, and hyperlipidaemia were diagnosed according to local criteria for  
514 each cohort; we lacked data on their treatment, and on antithrombotic medication adherence.  
515 These factors may have reduced the association between these predictors and outcomes – for  
516 example, the unexpected absence of an association between hypertension and ICH. We did not  
517 have central formal adjudication of outcome events. Though we present data on the relative  
518 predicted risks of ICH and ischaemic stroke in our study sample, conclusions about the  
519 appropriateness of antithrombotic treatment are limited by the observational nature of our data.  
520 We also lacked data on functional outcomes, and it should be borne in mind that the morbidity  
521 and mortality of ICH is around twice that of ischaemic stroke.<sup>29</sup> Finally, our risk estimates are  
522 obtained from organised care systems with access to MRI, and may not be applicable to less  
523 developed settings.

524 In summary, the MICON-ICH and MICON-IS scores we present here provide a new means by  
525 which to assess the long-term risk of ICH and ischaemic stroke. Although the MICON-ICH  
526 score appears promising and clinically useful, external validation is still required. Our results  
527 also clarify the relative predictive importance of CMBs for ICH and ischaemic stroke, and may  
528 facilitate the design of future randomised controlled trials of alternative stroke prevention  
529 strategies (e.g. of novel antithrombotic agents with potentially lower ICH risk) in patients at  
530 high predicted risk of ICH.

**531 Contributors**

532 DJWe, DW, GA, and JM-F drafted the initial protocol, which was reviewed with critical  
533 revisions and approval by all authors. JGB and GA did the statistical analysis. JGB, GA and  
534 DJW accessed and verified the data, and wrote the first draft of the manuscript. All authors  
535 contributed to data acquisition, management, and brain imaging analyses. All authors  
536 contributed to critical revision of the manuscript and approved the final manuscript for  
537 submission.

538

**539 Declaration of Interests**

540 MK reports grants from Ministry of Health, Labour and Welfare, Japan, and National Cerebral  
541 and Cardiovascular Center, and personal fees from Nippon Boehringer Ingelheim, Bayer  
542 Yakuhin, Daiichi-Sankyo Company, and Bristol-Myers Squibb (BMS)/Pfizer, outside the  
543 submitted work. HC reports personal fees from HOVID, outside the submitted work. EMA  
544 reports personal fees from Daiichi Sankyo, Pfizer, Bayer Healthcare, Nutricia, Abbott,  
545 Fresenius Kabi, and Sanofi, and grants from TUBITAK, outside the submitted work. JP reports  
546 personal fees from Abbott, Akcea, Boehringer Ingelheim, Daiichi Sankyo, and Pfizer, outside  
547 the submitted work. NB reports personal fees from Pfizer Israel, Ever Neuro Pharma, Shire  
548 Israel, and Boehringer Ingelheim Israel, outside the submitted work. DJS reports other funding  
549 from Bayer and Pfizer, outside the submitted work. PL reports other funding from Daiichi-  
550 Sankyo, Bayer, and Boehringer Ingelheim, outside the submitted work. GYHL reports  
551 consultancy and speaker fees from Bayer, Bayer/Janssen, BMS/Pfizer, Medtronic, Boehringer  
552 Ingelheim, Microlife, Roche, and Daiichi-Sankyo outside the submitted work. No fees received  
553 personally. UF reports grants from Medtronic, other funding from Medtronic, Stryker, and CSL  
554 Behring, and grants from Swiss National Science and Swiss Heart Foundation, outside the  
555 submitted work. DH reports grants from Bayer UCD Newman Fellowship, during the conduct



556 of the study. JS reports grants from Adriana van Rinsum Ponsen Stichting, during the conduct  
557 of the study. NK reports personal fees from from Eisai Pjarmaceuticals, grants and personal  
558 fees from Novartis Pharmaceuticals and Schwabe Pharmaceuticals, and grants from Temasek  
559 Foundation, outside the submitted work. PJK reports grants from Health Research Board  
560 Ireland, during the conduct of the study. JMW reports grants from Wellcome Trust, Chest Heart  
561 Stroke Scotland, and Row Fogo Charitable Trust, during the conduct of the study; grants from  
562 Fondation Leducq, British Heart Foundation, UK DRI Ltd funded by Medical Research  
563 Council, Alzheimer's Society and Alzheimer's Research UK, and Stroke Association, outside  
564 the submitted work. VIHK reports grants from Netherlands Heart Foundation (grant  
565 2001B071) during the conduct of the study. STE reports grants from Daiichi-Sankyo, and other  
566 funding from Bayer and BMS, outside the submitted work. NP reports grants from Swiss Heart  
567 Foundation, during the conduct of the study; other funding from Daiichi-Sankyo, Bayer, and  
568 Boehringer Ingelheim, and grants from Swiss National Science Foundation, outside the  
569 submitted work. EES reports personal fees from Alnylam Pharmaceuticals, Bayer, and Portola,  
570 outside the submitted work. VT reports personal fees from Boehringer Ingelheim, Pfizer, BMS,  
571 Bayer, and Medtronic, outside the submitted work. RV reports grants and personal fees from  
572 Bayer and BMS, grants from Boehringer, Daiichi-Sankyo, Medtronic and Biogen; and personal  
573 fees from Javelin, outside the submitted work. KKL reports grants, personal fees and non-  
574 financial support from Boehringer Ingelheim; grants and non-financial support from Pfizer;  
575 grants and personal fees from Amgen; grants from Eisai; grants and personal fees from Sanofi;  
576 and non-financial support from Daiichi Sankyo; outside the submitted work. PMR reports  
577 personal fees from Bayer, Abbott, and BMS, outside the submitted work. KT reports personal  
578 fees from Daiichi-Sankyo, Bayer Yakuhin, Bristol Myers Squibb, and Nippon Boehringer  
579 Ingelheim, outside the submitted work. BHJ reports grants from BMS Korea, Shinpoong  
580 Pharm. Co. Ltd., Bayer, Boehringer Ingelheim, and Daiichi-Sankyo, grants and personal fees

581 from Esai, grants from AstraZeneca Korea, Servier Korea, Yuhan Corporation, Jeil  
582 Pharmaceutical Co, and Korean Drug Co., Ltd, grants and personal fees from Shire Korea,  
583 grants from JLK inspection, Chong Gun Dang Pharmaceutical Corp., and Dong-A  
584 Pharmaceutical, and personal fees from Amgen Korea, and Otsuka Korea, outside the  
585 submitted work. JMF reports grants from Instituto de Salud Carlos III, Fondo de  
586 Investigaciones Sanitarias, and Instituto de Salud Carlos III, RETICS INVICTUS PLUS  
587 RD16/0010/0019, during the conduct of the study. DJWe reports personal fees from Bayer,  
588 Alnylam and Portola outside the submitted work. All other authors declare no competing  
589 interests.

590

#### 591 **Acknowledgements**

592 Funding for the included cohort studies was provided by the British Heart Foundation, Stroke  
593 Association, UCLH National Institute of Health Research (NIHR) Biomedical Research  
594 Centre, Wellcome Trust, Health Research Board Ireland, NIHR Biomedical Research Centre  
595 (Oxford, UK), Canadian Institutes of Health Research, Pfizer Cardiovascular Research award,  
596 Basel Stroke Funds, Science Funds Rehabilitation Felix-Platter-Hospital, Neurology Research  
597 Pool University Hospital Basel, Bayer AG, Fondo de Investigaciones Sanitarias Instituto de  
598 Salud Carlos III (FI12/00296; RETICS INVICTUS PLUS RD16/0019/0010; FEDER),  
599 Imperial College London NIHR Biomedical Research Centre, Dutch Heart Foundation,  
600 Servier, Association de Recherche en Neurologie Vasculaire and RHU TRT\_cSVD (ANR-16-  
601 RHUS-004), Vidi innovational grant from The Netherlands ZonMw, Chest Heart Stroke  
602 Scotland, Medical Research Council, Fondation Leducq, The Row Fogo Charitable Trust,  
603 National Institute of Health (USA), Adriana van Rinsum-Ponsen Stichting, Japan Agency for  
604 Medical Research and Development (AMED), Ministry of Health, Labour and Welfare  
605 (Japan), and National Cerebral and Cardiovascular Center, Health and Medical Research Grant,

606 Singapore National Medical Research Council, and Dutch Heart Foundation. RS is part funded  
607 by the UCLH/UCL Biomedical Research Centre. RV is an investigator of Imperial BRC and  
608 partially funded by the European Union's Horizon 2020 research and innovation programme  
609 under grant agreement No. 754517 (PRESTIGE-AF).

610

611 **Data Sharing Statement**

612 Requests for access to anonymised study data for legitimate academic purposes may be directed  
613 to the corresponding author. Approval by the study steering committee and the principal  
614 investigator of each cohort in the study will be required before data can be shared.

615

616 **References**

617

618 1 Antithrombotic Trialists' Collaboration. Collaborative meta-analysis of randomised  
619 trials of antiplatelet therapy for prevention of death, myocardial infarction, and stroke in high  
620 risk patients. *BMJ* 2002; **324**:71.

621 2 Hart RG, Pearce LA, Aguilar MI. Meta-analysis: Antithrombotic Therapy to Prevent  
622 Stroke in Patients Who Have Nonvalvular Atrial Fibrillation. *Ann Intern Med* 2007;**146**:857–  
623 67.

624 3 Ruff CT, Giugliano RP, Braunwald E, et al. Comparison of the efficacy and safety of  
625 new oral anticoagulants with warfarin in patients with atrial fibrillation: A meta-analysis of  
626 randomised trials. *Lancet* 2014; **383**:955.

627 4 Zhu W, Fu L, Ding Y, et al. Meta-analysis of ATRIA versus CHA2DS2-VASc for  
628 predicting stroke and thromboembolism in patients with atrial fibrillation for predicting stroke  
629 and thromboembolism in patients with atrial fibrillation. *International Journal of Cardiology*  
630 2017; **227**:436–422.

631 5 Borre AD, Goode A, Raitz G, et al. Predicting thromboembolic and bleeding event risk  
632 in patients with non-valvular atrial fibrillation: a systematic review. *Thromb Haemost* 2018;  
633 **118(12)**:2171–2187.

634 6 Senoo K, Proietti M, Lane DA, et al. Evaluation of the HAS-BLED, ATRIA, and  
635 ORBIT Bleeding Risk Scores in Patients with Atrial Fibrillation Taking Warfarin. *Am J Med*  
636 2016;**129**: 600–7.

637 7 Chao TF, Lip GYH, Lin YJ, et al. Major bleeding and intracranial hemorrhage risk  
638 prediction in patients with atrial fibrillation: Attention to modifiable bleeding risk factors or

639 use of a bleeding risk stratification score? A nationwide cohort study. *Int J Cardiol* 2018; **254**:  
640 157–61.

641 8 Friberg F, Rosenqvist M, Lip GYH. Evaluation of risk stratification schemes for  
642 ischaemic stroke and bleeding in 182 678 patients with atrial fibrillation: the Swedish Atrial  
643 Fibrillation cohort study. *European Heart Journal* 2012; **33**:1500–1510.

644 9 Hilkens NA, Li L, Rothwell PM, et al. External Validation of Risk Scores for Major  
645 Bleeding in a Population-Based Cohort of Transient Ischemic Attack and Ischemic Stroke  
646 Patients. *Stroke* 2018; **49(3)**:601–606.

647 10 Hijazi Z, Oldgren J, Lindbäck J, et al. The novel biomarker-based ABC (age,  
648 biomarkers, clinical history)-bleeding risk score for patients with atrial fibrillation: a derivation  
649 and validation study. *Lancet* 2016; **387**: 2302–11.

650 11 Oldgren J, Hijazi Z, Lindbäck J, et al. Performance and Validation of a Novel  
651 Biomarker-Based Stroke Risk Score for Atrial Fibrillation. *Circulation* 2016; **134(22)**:1697–  
652 1707.

653 12 Berg DD, Ruff CT, Jarolim P, et al. Performance of the ABC scores for assessing the  
654 risk of stroke or systemic embolism and bleeding in patients with atrial fibrillation in ENGAGE  
655 AF-TIMI 48. *Circulation* 2019; **139(6)**: 760–771.

656 13 Wilson D, Charidimou A, Werring DJ. Advances in understanding spontaneous  
657 intracerebral hemorrhage: insights from neuroimaging. *Exp Rev Neurotherapeutics* 2014;  
658 **14(6)**:661–678.

659 14 Wilson D, Ambler G, Shakeshaft C, et al. Cerebral microbleeds and intracranial  
660 haemorrhage risk in patients anticoagulated for atrial fibrillation after acute ischaemic stroke  
661 or transient ischaemic attack (CROMIS-2): a multicentre observational cohort study. *Lancet*  
662 *Neurology* 2018; **17(6)**: 539–47.

- 663 15 Wilson D, Ambler G, Lee KJ, et al. Cerebral microbleeds and stroke risk after  
664 ischaemic stroke or transient ischaemic attack: a pooled analysis of individual patient data from  
665 cohort studies. *Lancet Neurology* 2019; **18**(7): 653–65.
- 666 16 Metacohorts. C. METACOHORTS for the study of vascular disease and its  
667 contribution to cognitive decline and neurodegeneration: An initiative of the Joint Programme  
668 for Neurodegenerative Disease Research. *Alzheimer's & dementia: the journal of the*  
669 *Alzheimer's Association* 2016; **12**(12): 1235–49
- 670 17 Cochrane Tool to Assess Risk of Bias in Cohort Studies.  
671 [http://methods.cochrane.org/sites/methods.cochrane.org.bias/files/public/uploads/Tool%20to](http://methods.cochrane.org/sites/methods.cochrane.org.bias/files/public/uploads/Tool%20to%20Assess%20Risk%20of%20Bias%20in%20Cohort%20Studies.pdf)  
672 [%20Assess%20Risk%20of%20Bias%20in%20Cohort%20Studies.pdf](http://methods.cochrane.org/sites/methods.cochrane.org.bias/files/public/uploads/Tool%20to%20Assess%20Risk%20of%20Bias%20in%20Cohort%20Studies.pdf). Accessed 8<sup>th</sup> March  
673 2020.
- 674 18 Williams RL. A note on robust variance estimation for cluster-correlated data.  
675 *Biometrics* 2000; **56**:645–646.
- 676 19 Mehndiratta MM, Khan M, Mehndiratta P, Wasay M. Stroke in Asia: geographical  
677 variations and temporal trends. *J Neurol Neurosurg Psychiatry* 2014; **85**:1308–1312.
- 678 20 Steyerberg EW, Harrell FE, Jr., Borsboom GJ, Eijkemans MJ, Vergouwe Y, Habbema  
679 JD. Internal validation of predictive models: efficiency of some procedures for logistic  
680 regression analysis. *J Clin Epidemiol* 2001; **54**(8): 774–81.
- 681 21 Royston P, Parmar MKB, Sylvester R. Construction and validation of a prognostic  
682 model across several studies, with an application in superficial bladder cancer. *Stat Med* 2004;  
683 **23**(6): 907–26.
- 684 22 Steyerberg EW, Harrell FE. Prediction models need appropriate internal, internal-  
685 external, and external validation. *J Clin Epidemiol* 2016; **69**: 245–247.

- 686 23 Vickers AJ, Cronin AM, Begg CB. One statistical test is sufficient for assessing new  
687 predictive markers. *BMC Medical Research Methodology* 2011; **11**:13.
- 688 24 Moons KGM, Altman DG, Reitsma JB, et al. Transparent Reporting of a multivariable  
689 prediction model for Individual Prognosis Or Diagnosis (TRIPOD): explanation and  
690 elaboration. *Ann Intern Med* 2015; **162**:W1-W73.
- 691 25 Gregoire SM, Chaudhary UJ, Brown MM, et al. The Microbleed Anatomical Rating  
692 Scale (MARS): reliability of a tool to map brain microbleeds. *Neurology* 2009; **73(21)**:1759–  
693 66.
- 694 26 Hilkens NA, Algra A, Greving JP. Prediction models for intracranial hemorrhage or  
695 major bleeding in patients on antiplatelet therapy: a systematic review and external validation  
696 study. *J Thromb Haemost* 2016; **14(1)**:167–74.
- 697 27 Hilkens NA, Algra A, Diener HC, et al. Predicting major bleeding in patients with  
698 noncardioembolic stroke on antiplatelets: S2TOP-BLEED. *Neurology* 2017; **89**:936–943.
- 699 28 Amarenco P, Sissani L, Labreuche J, et al. The Intracranial-B2LEED3S Score and the  
700 Risk of Intracranial Hemorrhage in Ischemic Stroke Patients Under Antiplatelet Treatment.  
701 *Cerebrovasc Dis* 2017; **43**:145–151.
- 702 29 van Asch CJ, Luitse MJ, Rinkel GJ, van der Tweel I, Algra A, Klijn CJ. Incidence, case  
703 fatality, and functional outcome of intracerebral haemorrhage over time, according to age, sex,  
704 and ethnic origin: a systematic review and meta-analysis. *Lancet Neurol* 2010; **9(2)**:167–76  
705  
706  
707  
708  
709

## Figure Titles

*Figure 1: Study flowchart*

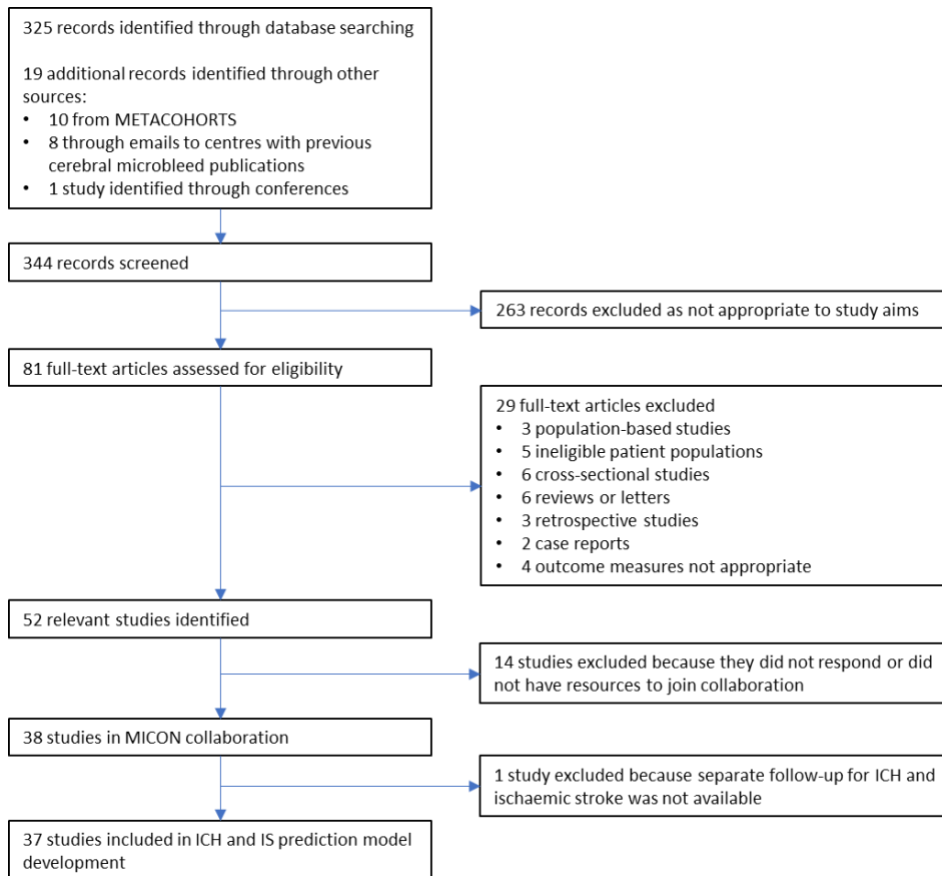




Figure 2: Kaplan-Meier plot and risk table for symptomatic ICH

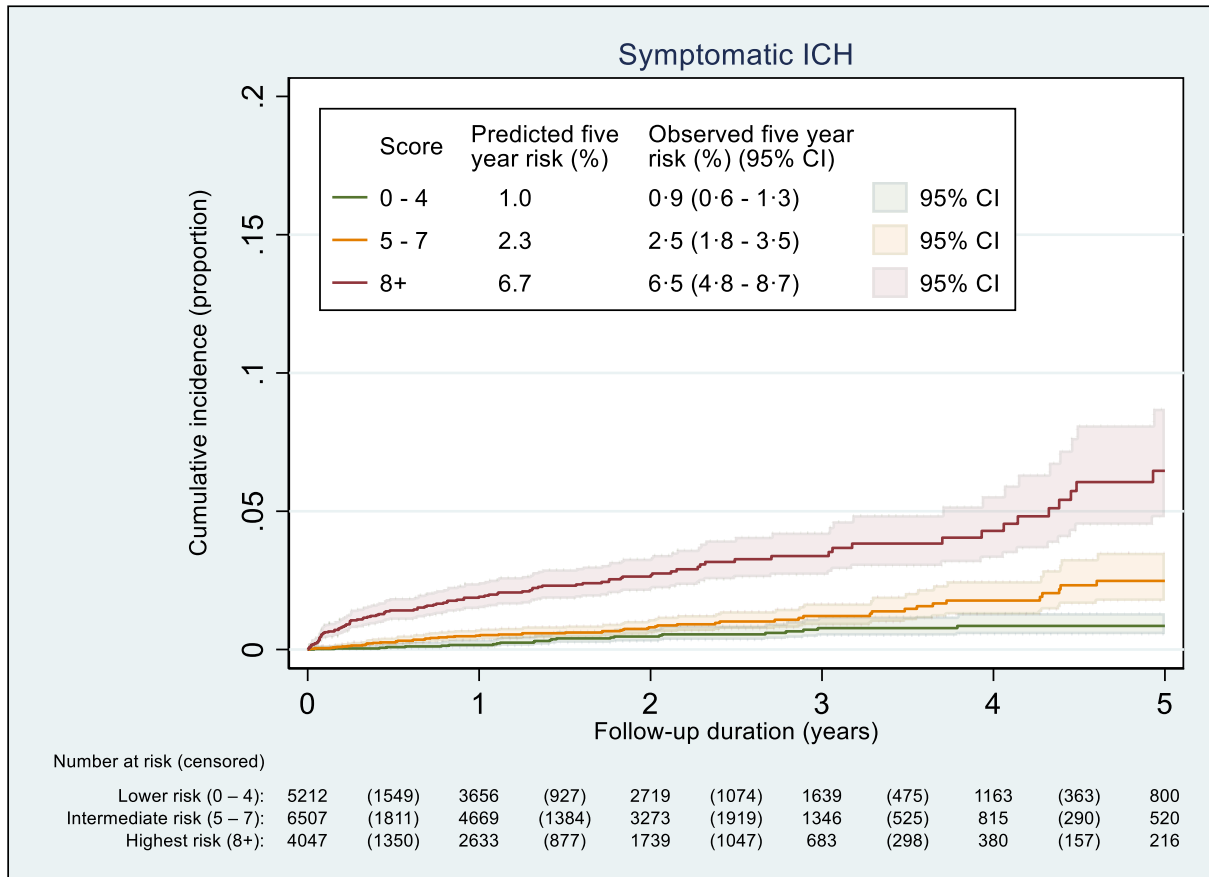
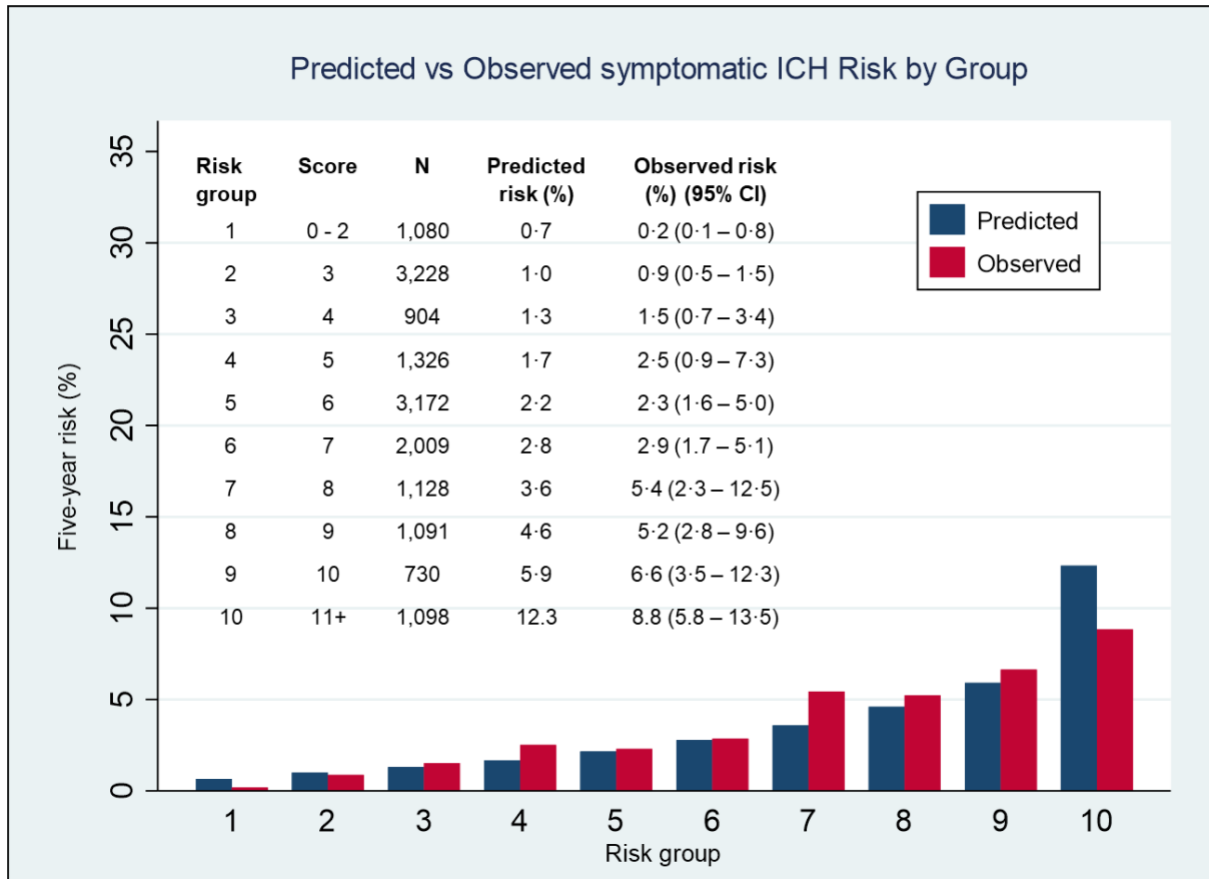


Figure 3: Model calibration – ICH



## Tables

*Table 1: Baseline characteristics*

Values show prevalence for categorical variables, and mean (SD) for continuous variables.

<b>Variable</b>		<b>Antiplatelet (n = 8,736)</b>	<b>Anticoagulant (n = 7,048)</b>	<b>Overall (n = 15,784)</b>
Age		67.4 (12.4)	74.7 (10.8)	70.7 (12.2)
Female sex		3,444/8,736 (39.4%)	3,253/7,048 (46.2%)	6,697/15,784 (42.4%)
Male sex		5,292/8,736 (60.6%)	3,795/7,048 (53.8%)	9,087/15,784 (57.6%)
East Asian population		2,405/8,736 (27.5%)	2,185/7,048 (31.0%)	4,590/15,784 (29.1%)
Hypertension		5,931/8,726 (68.0%)	5,291/7,024 (75.33%)	11,222/15,750 (71.3%)
Atrial fibrillation		527/8,687 (6.1%)	5,906/7,039 (83.9%)	6,433/15,726 (40.9%)
Diabetes mellitus (type 1 or 2)		1,720/7,013 (24.5%)	1,490/6,769 (22.0%)	3,208/13,782 (23.3%)
Ischaemic stroke before presenting stroke/TIA		1,001/7,781 (12.9%)	1,299/6,906 (18.8%)	2,300/14,687 (16.5%)
Previous ICH		80/6,549 (1.22%)	85/6,403 (1.31%)	165/12,872 (1.27%)
Presentation with ischaemic stroke (vs TIA)		6,632/8,735 (75.9%)	6,172/7,039 (87.7%)	12,804/15,774 (81.2%)
CMB burden	0	6,418/8,733 (73.5%)	5,202/6,970 (74.6%)	11,620/15,703 (74.0%)
	1	942/8,733 (10.8%)	812/6,970 (11.7%)	1,754/15,703 (11.2%)
	2-4	785/8,733 (9.0%)	671/6,970 (9.6%)	1,456/15,703 (9.3%)

	5-10	316/8,733 (3.6%)	162/6,970 (2.3%)	478/15,703 (3.0%)
	11-19	157/8,733 (1.8%)	59/6,970 (0.85%)	216/15,703 (1.4%)
	20 +	115/8,733 (1.3%)	64/6,970 (0.92%)	179/15,703 (1.1%)
SWI sequence used (vs T2* GRE)		2,422/8,734 (27.7%)	2,335/7,025 (33.2%)	4,757/15,759 (30.2%)
Antithrombotic treatment	AP only	8,736/8,736 (100%)	NA	8,733/15,773 (55.4%)
	Warfarin or VKA	NA	4,752/7,037* (67.4%)	4,752/15,773 (30.1%)
	DOAC	NA	2,288/7,037 (32.5%)	2,288/15,773 (14.5%)
Concomitant antiplatelet with anticoagulant		NA	1,360/7,048 (19.3%)	1,360/15,784 (8.6%)

\*Type of anticoagulant unknown for 11 participants

AP: antiplatelet; CMB: cerebral microbleed; DOAC: direct oral anticoagulant; VKA: vitamin K antagonist; SWI: susceptibility-weighted imaging; GRE – gradient-recall echo

Table 2: Final models and risk scores for symptomatic ICH (MICON-ICH) and ischaemic stroke (MICON-IS)

Predictor		Category	ICH		IS		ICH score	IS score
			HR (95% CI)	P-value	HR (95% CI)	P-value	(/24)	(/34)
Number of CMBS		0	1	<0.001	1	<0.001	0	0
		1	1.96 (1.38 - 2.80)		1.07 (0.86 - 1.34)		3	1
		2-4	2.18 (1.43 - 3.33)		1.29 (1.08 - 1.53)		3	2
		5-10	3.27 (1.71 - 6.24)		1.66 (1.21 - 2.27)		5	4
		11-19	4.93 (2.93 - 8.29)		*		6	4
		20+	9.26 (4.11 - 20.82)		1.91 (1.36 - 2.69)		9	5
T2*GRE sequence used?		Yes	1.72 (0.80 - 3.70)	0.16	1.54 (0.82 - 2.89)	0.18	2	3
Age in years		< 50	1	<0.001	1	<0.001	0	0
		50 - 59	1.05 (0.48 - 2.33)		1.03 (0.68 - 1.55)		0	0
		60 - 69	*		1.10 (0.77 - 1.57)		0	1
		70 - 79	2.12 (0.95 - 4.75)		1.60 (1.11 - 2.29)		3	4
		80 +	2.66 (1.19 - 5.96)		1.72 (1.15 - 2.56)		4	4
East Asian population		Yes	1.85 (0.82 - 4.15)	0.14	1.62 (0.78 - 3.37)	0.19	2	4
IS before presenting stroke/TIA		Yes	1.36 (1.00 - 1.87)	0.053	1.85 (1.48 - 2.31)	<0.001	1	5
<i>ICH score only</i>	Previous ICH	Yes	3.91 (2.40 - 6.36)	<0.001	-	-	5	-
	Antithrombotic	AP only	1.23 (0.69 - 2.18)	0.51	-	-	1	-

	treatment	Warfarin/VKA	1.30 (0.82 - 2.05)		-	-	1	-
		DOAC	1		-	-	0	-
<i>IS score only</i>	Presentation with ischaemic stroke	Yes	-	-	1.34 (0.91 - 1.98)	0.14	-	2
	Diabetes mellitus	Yes	-	-	1.32 (1.09 - 1.58)	0.004	-	2
	Antithrombotic treatment	AP, has AF	-	-	3.14 (1.84 - 5.35)	<0.001	-	9
		AP, no AF	-	-	1.70 (1.16 - 2.51)		-	4
		OAC, other reason	-	-	1.36 (0.81 - 2.27)		-	2
		OAC, for AF	-	-	1		-	0

Baseline five-year survival for full ICH model: 99.53%; for full IS model: 97.15%

\* Category merged with preceding category to prevent inconsistent (non-monotonic) scoring

AF: atrial fibrillation; AP: antiplatelet; CMB: cerebral microbleed; DOAC: direct oral anticoagulant; GRE – gradient-recall echo; OAC (including vitamin K antagonists and direct oral anticoagulants); VKA: vitamin K antagonist

Table 3: Comparison of MICON-ICH score with existing bleeding risk scores

Comparator	Antithrombotics	N	C-index (Comparator)	C-index (MICON)	Optimism- adjusted difference (95% CI)
HASBLED*	All	5,510	0.47	0.75	0.27 (0.18 – 0.37)
	OAC only	4,017	0.47	0.67	0.20 (0.06 – 0.34)
ATRIA#	All	3,340	0.63	0.71	0.06 (-0.06 – 0.18)
	OAC only	2,677	0.61	0.67	0.04 (-0.08 – 0.17)
ORBIT#	All	3,340	0.60	0.71	0.09 (-0.01 – 0.18)
	OAC only	2,677	0.58	0.67	0.08 (-0.03 – 0.19)

\* Cohorts used for comparison: CROMIS-2, Graz, HERO, Kushiro City, NOACISP, IPAAC-Warfarin, SAMURAI-NVAF, TABASCO, UCLH, Wurzburg, Soo

# Cohorts used for comparison: CROMIS-2, Graz, NOACISP, IPAAC-Warfarin, SAMURAI-NVAF, TABASCO, Soo

## Appendix

### Table of Contents

Page 2	List of collaborators
Page 3	Supplementary Table 1: MRI sequence type and cerebral microbleed detection
Page 4	Supplementary Table 2: Baseline characteristics by cohort
Page 7	Supplementary Table 3: Interaction terms
Page 8	Supplementary Table 4: Additional variables
Page 9	Supplementary Table 5: Characteristics of patients in highest-risk group for ICH and lower-risk group for ischaemic stroke
Page 10	Supplementary Figure 1: Kaplan-Meier plot and risk table for ischaemic stroke model
Page 11	Supplementary Figure 2: Model calibration – ischaemic stroke
Page 12	Supplementary Figure 3: ICH model performance by MRI sequence type
Page 13	Supplementary Figure 4: Comparative risks of symptomatic ICH and ischaemic stroke
Page 14	Supplementary Figure 5: Nomogram for symptomatic ICH risk
Page 15	Supplementary Figure 6: Nomogram for ischaemic stroke risk
Pages 16 -17	Supplementary References



**List of MICON collaborators:**

**CROMIS-2:** Kirsty Harkness, Louise Shaw, Jane Sword, Azlisham Mohd Nor, Pankaj Sharma, Deborah Kelly, Frances Harrington, Marc Randall, Matthew Smith, Karim Mahawish, Abduelbaset Elmarim, Bernard Esisi, Claire Cullen, Arumug Nallasivam, Christopher Price, Adrian Barry, Christine Roffe, John Coyle, Ahamad Hassan, Jonathan Birns, David Cohen, L Sekaran, Adrian Parry-Jones, Anthea Parry, David Hargroves, Harald Proschel, Prabel Datta, Khaled Darawil, Aravindakshan Manoj, Mathew Burn, Chris Patterson, Elio Giallombardo, Nigel Smyth, Syed Mansoor, Ijaz Anwar, Rachel Marsh, Sissi Ispoglou, Dinesh Chadha, Mathuri Prabhakaran, Sanjeevikumar Meenakishundaram, Janice O'Connell, Jon Scott, Vinodh Krishnamurthy, Prasanna Aghoram, Michael McCormick, Nikola Sprigg, Paul O'Mahony, Martin Cooper, Lillian Choy, Peter Wilkinson, Simon Leach, Sarah Caine, Ilse Burger, Gunaratam Gunathilagan, Paul Guyler, Hedley Emsley, Michelle Davis, Dulka Manawadu, Kath Pasco, Maam Mamun, Robert Luder, Mahmud Sajid, Ijaz Anwar, James Okwera, Elizabeth Warburton, Kari Saastamoinen, Timothy England, Janet Putterill, Enrico Flossman, Michael Power, Krishna Dani, David Mangion, Appu Suman, John Corrigan, Enas Lawrence, Djamil Vahidassr, Clare Shakeshaft, Martin M Brown , Andreas Charidimou, Hannah Cohen, Gargi Banerjee, Henry Houlden, Mark J White, Tarek A Yousry, Kirsty Harkness, Enrico Flossmann, Nigel Smyth, Louise J Shaw, Elizabeth Warburton, Keith W Muir. **Bern:** Leonidas Panos, Pascal Gratz, Heinrich Mattle. **TABASCO:** Amos D Korczyn, Efrat Kliper. **PERFORM-MRI:** Philippe Maeder, Achim Gass, Chahin Pachai, Luc Bracoub, Marie-Yvonne Douste-Blazy, Marie Dominique Fratacci, Eric Vicaut. **SAMURAI NVAF:** Shoichiro Sato, Kaori Miwa, Kyohei Fujita, Toshihiro Ide. **Monash Stroke:** Henry Ma, John Ly, Shaloo Singhal, Ronil Chandra, Lee-anne Slater, Cathy Soufan, Christopher Moran. **Basel TIA and NOACISP:** Christopher Traenka, Sebastian Thilemann, Joachim Fladt, Henrik Gensicke, Leo H Bonati. **SNUBH Stroke cohort:** Beom Joon Kim, Moon-Ku Han, Jihoon Kang, Eunbin Ko, Mi Hwa Yang, Myung Suk Jang. **BIOSTROKE/TIA-Dublin:** Sean Murphy, Fiona Carty, Layan Akijian, John Thornton, Mark Schembri. **CASPER:** Elles Douven. **HERO:** Raquel Delgado-Mederos, Rebeca Marín, Pol Camps-Renom, Daniel Guisado-Alonso, Fidel Nuñez, Santiago Medrano-Martorell, Elisa Merino. **HAGAKURE:** Kotaro Iida, Syuhei Ikeda, Hiroyuki Irie. **Orken:** Derya Selcuk Demirelli. **CATCH:** Jayesh Modi Medanta, Charlotte Zerna. **MSS2:** Maria C Valdés Hernández, Paul Armitage, Anna K Heye, Susana Muñoz-Maniega, Eleni Sakka, Michael J Thrippleton, Martin Dennis. **Sainte-Anne:** Ysoline Beigneux, Mauro Silva. **Singapore:** Narayanaswamy Venketasubramanian. **HKU:** Shu Leung Ho, Raymond Tak Fai Cheung, Koon Ho Chan, Kay Cheong Teo, Edward S Hui, Joseph Shiu Kwong Kwan, Richard S.K. Chang, Man Yu Tse, Chu Peng Hoi, Chung Yan Chan, Oi Ling Chan, Ryan Hoi Kit Cheung, Edmund Ka Ming Wong. **IPAAC:** Kam Tat Leung, Suk Fung Tsang, Hing Lung Ip, Sze Ho Ma, Karen Ma, Wing Chi Fong, Siu Hung Li, Richard Li, Ping Wing Ng, Kwok Kui Wong, Wenyan Liu, Lawrence Wong. **MICRO:** Lino Ramos, Els De Schryver, Joost Jöbbsis, Jaap van der Sande, Paul Brouwers, Yvo Roos, Jan Stam, Stef Bakker, Henk Verbiest, Wouter Schoonewille, Cisca Linn, Leopold Hertzberger, Maarten van Gemert, Paul Berntsen. **PARISK:** Dianne van Dam-Nolen, M Eline Kooi, Aad van der Lugt, Peter J. Koudstaal. **SIGNaL:** Alexander Leff, Nicholas Ward, Parashkev Nachev, Richard J Perry, Hatice Ozkan, John Mitchell.

### Supplementary Table 1: MRI sequence type and cerebral microbleed detection

Summarises studies comparing SWI and SWAN sequences to 2D GRE in the same patients

Study*	Population	N	Sequence	Prevalence (%) (SWI/SWAN)	Prevalence (%) (GRE)	Summary statistics# (SWI/SWAN)	Summary statistics# (GRE)
Vernooij 2008 <sup>1</sup>	General older population	200	SWI	71/200 (35.5)	42/200 (21.0)	Median 2.5 IQR: 1 – 9.5	Median 1 IQR: 1 - 4
Mori 2008 <sup>2</sup>	Moya-Moya disease	50	SWI	21/50 (42.0)	16/50 (32.0)	-	-
Nandigam 2009 <sup>3</sup>	Cerebral amyloid angiopathy	3	SWI	3/3 (100.0)	3/3 (100.0)	Mean: 103.3	GRE: 34.3
Goos 2011 <sup>4</sup>	Memory clinic patients	141	SWI	56/141 (39.7)	32/141 (22.7)	Median: 2 Range: 1 - 129	Median: 1 Range: 1 - 144
Cheng 2013 <sup>5</sup>	Cerebral amyloid angiopathy	9	SWI	-	-	Median: 111 IQR: 48 – 192	Median: 57 IQR: 45 - 187
	Healthy controls	21	SWI	4/21 (19.0)	3/21 (14.3)	Median: 2	Median: 1
Guo 2013 <sup>6</sup>	Hypertensive older population	273	SWI SWAN	SWI: 83/273 (30.4) SWAN: 88/273 (32.2)	54/273 (19.8)	SWI: Median: 8 Range: 1 – 15 SWAN: Median 8 Range: 1 - 17	GRE: Median 3 Range: 1 - 11
Shams 2015 <sup>7</sup>	Memory clinic patients	246	SWI	50/246 (20.3)	43/246 (17.5)	Mean: 2.15	Mean: 1.48
Shao 2017 <sup>8</sup>	Lacunar ischaemic stroke	60	SWI	26/60 (43.3)	15/60 (25.0)	-	-
	Healthy controls	60	SWI	8/60 (13.3)	4/60 (6.7)	-	-

# For patients with microbleeds detected

Supplementary Table 2: Baseline characteristics by cohort

Cohort	Location	N	Age (y)	Female Sex	AF	HTN	DM	Previous IS	Previous ICH	Index Event IS	SWI Used	CMB Presence	AP Only	VKA	DOAC	Follow Up (y)	ICH events (%)	IS events (%)
CROMIS-2 <sup>9</sup>	UK	1435	75.9 (10.4)	605/1435 (42.2)	1435/1435 (100.0)	897/1413 (63.5)	241/1434 (16.8)	137/1412 (9.7)	8/1416 (0.6)	1199/1435 (83.6)	0/1435 (0.0)	300/1435 (20.9)	36/1435 (2.5)	874/1435 (60.9)	525/1435 (36.6)	2.34 (1.00)	14 (0.98)	56 (3.9)
HBS	US	504	67.7 (15.4)	209/504 (41.5)	120/504 (23.8)	373/504 (74.0)	140/504 (27.8)	116/504 (23.0)	-	454/504 (90.1)	2/504 (0.4)	71/504 (14.1)	394/504 (78.2)	109/504 (21.6)	1/504 (0.2)	0.23 (0.05)	0 (0)	0 (0)
Bern <sup>10</sup>	Switzerland	245	66.6 (13.8)	106/245 (43.3)	79/202 (39.1)	144/245 (58.8)	32/245 (13.1)	33/245 (13.5)	-	245/245 (100.0)	245/245 (100.0)	49/245 (20.0)	171/245 (69.8)	66/245 (26.9)	8/245 (3.3)	0.30 (0.09)	0 (0)	5 (2)
CU-STRIDE <sup>11</sup>	Hong Kong	516	67.5 (11.1)	217/516 (42.1)	32/516 (6.2)	362/516 (70.2)	173/516 (33.5)	67/516 (13.0)	9/516 (1.7)	437/516 (84.7)	231/516 (44.8)	117/516 (22.7)	492/516 (95.3)	24/516 (4.7)	0/516 (0.0)	1.31 (0.37)	2 (0.39)	14 (2.7)
TABASCO <sup>12</sup>	Israel	378	67.4 (9.8)	171/378 (45.2)	29/374 (7.8)	221/374 (59.1)	89/374 (23.8)	0/378 (0.0)	0/378 (0.0)	275/378 (72.8)	0/378 (0.0)	59/378 (15.6)	345/378 (91.3)	33/378 (8.7)	0/378 (0.0)	4.06 (1.39)	0 (0)	54 (14)
Graz	Austria	385	65.9 (12.4)	142/385 (36.9)	91/385 (23.6)	299/385 (77.7)	84/385 (21.8)	77/385 (20.0)	5/385 (1.3)	342/385 (88.8)	0/385 (0.0)	75/385 (19.5)	315/385 (81.8)	58/385 (15.1)	12/385 (3.1)	1.75 (1.85)	13 (3.4)	52 (14)
PERFORM-MRI <sup>13</sup>	France	1056	67.7 (8.0)	370/1056 (35.0)	16/1056 (1.5)	887/1056 (84.0)	324/1056 (30.7)	120/1056 (11.4)	3/1056 (0.3)	929/1056 (88.0)	0/1056 (0.0)	381/1056 (36.1)	1056/1056 (100.0)	0/1056 (0.0)	0/1056 (0.0)	2.32 (0.68)	10 (0.95)	94 (8.9)
PARISK <sup>14</sup>	Netherlands	220	70.9 (9.1)	65/220 (29.5)	0/220 (0.0)	151/220 (68.6)	50/220 (22.7)	64/220 (29.1)	3/220 (1.4)	98/220 (44.5)	0/218 (0.0)	59/220 (26.8)	220/220 (100.0)	0/220 (0.0)	0/220 (0.0)	2.09 (0.46)	0 (0)	10 (4.5)
SAMURAI-NVAF <sup>15</sup>	Japan	1051	77.2 (9.8)	445/1051 (42.3)	1051/1051 (100.0)	977/1051 (93.0)	208/1051 (19.8)	225/1051 (21.4)	19/1051 (1.8)	1007/1051 (95.8)	771/1051 (73.4)	250/1051 (23.8)	12/1051 (1.1)	598/1051 (56.9)	441/1051 (42.0)	1.63 (0.72)	10 (0.95)	72 (6.9)
RUNDMC <sup>16</sup>	Netherlands	178	64.7 (8.7)	63/178 (35.4)	19/178 (10.7)	144/178 (80.9)	36/178 (20.2)	46/178 (25.8)	1/178 (0.6)	90/178 (50.6)	0/178 (0.0)	35/178 (19.7)	159/178 (89.3)	19/178 (10.7)	0/178 (0.0)	4.76 (0.75)	2 (1.1)	23 (13)
Wurzburg	Germany	343	70.7 (13.3)	154/343 (44.9)	99/343 (28.9)	276/343 (80.5)	73/343 (21.3)	77/343 (22.4)	12/343 (3.5)	270/343 (78.7)	151/343 (44.0)	75/343 (21.9)	219/343 (64.2)	40/343 (11.7)	82/343 (24.0)	0.34 (0.22)	1 (0.29)	19 (5.5)
Monash Stroke <sup>17</sup>	Australia	356	75.0 (10.7)	172/356 (48.3)	356/356 (100.0)	283/356 (79.5)	92/356 (25.9)	97/356 (27.2)	6/356 (1.7)	305/356 (85.7)	336/356 (94.4)	153/356 (43.0)	0/356 (0.0)	319/356 (89.6)	37/356 (10.4)	1.74 (1.24)	7 (2)	9 (2.5)
Basel TIA <sup>18</sup>	Switzerland	181	69.3 (12.3)	67/181 (37.0)	24/181 (13.3)	134/181 (74.0)	31/181 (17.1)	13/181 (7.2)	-	0/181 (0.0)	0/181 (0.0)	20/181 (11.0)	148/181 (81.8)	33/181 (18.2)	0/181 (0.0)	0.25 (0.00)	0 (0)	24 (13)
Yonsei <sup>19</sup>	South Korea	488	70.3 (10.5)	278/488 (57.0)	488/488 (100.0)	381/488 (78.1)	117/488 (24.0)	87/488 (17.8)	13/488 (2.7)	460/488 (94.3)	0/488 (0.0)	146/488 (29.9)	1/488 (0.2)	487/488 (99.8)	0/488 (0.0)	2.63 (1.58)	7 (1.4)	46 (9.4)

BIO-STROKE/TIA <sup>20</sup>	Ireland	240	67.9 (13.3)	91/240 (37.9)	73/236 (30.9)	141/238 (59.2)	38/237 (16.0)	19/236 (8.1)	-	89/240 (37.1)	0/240 (0.0)	24/240 (10.0)	167/240 (69.6)	73/240 (30.4)	0/240 (0.0)	0.47 (0.35)	0 (0)	13 (5.4)
Kushiro City <sup>21</sup>	Japan	631	71.5 (11.1)	257/631 (40.7)	86/631 (13.6)	407/631 (64.5)	182/631 (28.8)	115/631 (18.2)	17/631 (2.7)	631/631 (100.0)	0/631 (0.0)	268/631 (42.5)	568/631 (90.0)	63/631 (10.0)	0/631 (0.0)	0.15 (0.21)	20 (3.2)	99 (16)
IPAAC-Warfarin <sup>22</sup>	Hong Kong	81	71.3 (9.1)	40/81 (49.4)	81/81 (100.0)	56/81 (69.1)	27/81 (33.3)	25/81 (30.9)	1/81 (1.2)	65/81 (80.2)	71/81 (87.7)	24/81 (29.6)	0/81 (0.0)	81/81 (100.0)	0/81 (0.0)	2.10 (1.03)	3 (3.7)	5 (6.2)
CASPER <sup>23</sup>	Netherlands	133	65.8 (10.6)	38/133 (28.6)	16/133 (12.0)	94/133 (70.7)	18/133 (13.5)	10/133 (7.5)	0/133 (0.0)	133/133 (100.0)	133/133 (100.0)	79/133 (59.4)	115/133 (86.5)	10/133 (7.5)	8/133 (6.0)	1.21 (0.17)	0 (0)	3 (2.3)
HERO <sup>24</sup>	Spain	935	77.6 (6.6)	487/935 (52.1)	856/935 (91.7)	693/933 (74.3)	212/935 (22.7)	246/935 (26.4)	8/933 (0.9)	803/925 (86.8)	0/935 (0.0)	247/935 (26.4)	1/934 (0.1)	623/935 (66.7)	310/935 (33.2)	1.92 (0.58)	18 (1.9)	32 (3.4)
HAGAKURE	Japan	350	73.1 (13.0)	141/350 (40.3)	102/350 (29.1)	263/347 (75.8)	116/350 (33.1)	50/350 (14.3)	10/349 (2.9)	317/350 (90.6)	28/350 (8.0)	127/350 (36.3)	197/350 (56.3)	93/350 (26.6)	60/350 (17.1)	2.15 (1.08)	9 (2.6)	23 (6.6)
Leuven <sup>25</sup>	Belgium	487	72.2 (9.4)	192/487 (39.4)	103/487 (21.1)	313/487 (64.3)	92/487 (18.9)	61/487 (12.5)	-	354/487 (72.7)	0/487 (0.0)	129/487 (26.5)	354/487 (72.7)	133/487 (27.3)	0/487 (0.0)	2.12 (0.72)	4 (0.82)	32 (6.6)
NOACISP	Switzerland	290	78.3 (9.1)	132/290 (45.5)	290/290 (100.0)	226/290 (77.9)	55/289 (19.0)	49/289 (17.0)	12/289 (4.2)	262/290 (90.3)	284/290 (97.9)	79/290 (27.2)	10/290 (3.4)	67/290 (23.1)	213/290 (73.4)	1.84 (0.74)	9 (3.1)	19 (6.6)
Min Lou <sup>26</sup>	China	106	64.4 (12.0)	34/106 (32.1)	16/106 (15.1)	80/106 (75.5)	-	18/106 (17.0)	7/106 (6.6)	106/106 (100.0)	106/106 (100.0)	36/106 (34.0)	92/106 (86.8)	7/106 (6.6)	7/106 (6.6)	0.39 (0.27)	0 (0)	2 (1.9)
MICRO <sup>27</sup>	Netherlands	397	65.3 (12.2)	165/397 (41.6)	30/396 (7.6)	218/397 (54.9)	54/397 (13.6)	35/397 (8.8)	0/397 (0.0)	35/397 (8.8)	0/397 (0.0)	72/397 (18.1)	357/397 (89.9)	40/397 (10.1)	0/397 (0.0)	3.25 (1.63)	11 (2.8)	21 (5.3)
Orken <sup>28</sup>	Turkey	452	71.9 (12.1)	233/452 (51.5)	353/452 (78.1)	356/452 (78.8)	150/452 (33.2)	123/452 (27.2)	0/452 (0.0)	432/452 (95.6)	250/452 (55.3)	132/452 (29.2)	0/452 (0.0)	321/452 (71.0)	131/452 (29.0)	2.59 (2.07)	3 (0.66)	8 (1.8)
CATCH <sup>29</sup>	Canada	392	67.6 (13.9)	154/392 (39.3)	26/392 (6.6)	218/392 (55.6)	54/392 (13.8)	0/392 (0.0)	0/392 (0.0)	236/392 (60.2)	0/392 (0.0)	62/392 (15.8)	325/392 (82.9)	67/392 (17.1)	0/392 (0.0)	0.26 (0.09)	1 (0.26)	13 (3.3)
MSS2 <sup>30</sup>	UK	209	66.4 (11.4)	82/209 (39.2)	21/209 (10.0)	157/209 (75.1)	-	29/209 (13.9)	0/209 (0.0)	209/209 (100.0)	199/209 (95.2)	34/209 (16.3)	188/209 (90.0)	21/209 (10.0)	0/209 (0.0)	1.08 (0.30)	0 (0)	31 (15)
Sainte-Anne, Paris	France	302	78.6 (10.9)	154/302 (51.0)	302/302 (100.0)	215/302 (71.2)	56/302 (18.5)	39/302 (12.9)	6/302 (2.0)	302/302 (100.0)	0/279 (0.0)	80/302 (26.5)	0/302 (0.0)	122/302 (40.4)	180/302 (59.6)	1.53 (0.81)	5 (1.7)	20 (6.6)
STROKDEM	France	178	64.0 (12.7)	68/178 (38.2)	12/178 (6.7)	100/178 (56.2)	23/178 (12.9)	20/178 (11.2)	1/178 (0.6)	178/178 (100.0)	0/178 (0.0)	23/178 (12.9)	130/178 (73.0)	40/178 (22.5)	8/178 (4.5)	3.32 (1.61)	0 (0)	16 (9)
NUS (Chen)	Singapore	41	66.6 (10.2)	12/41 (29.3)	10/41 (24.4)	32/41 (78.0)	11/41 (26.8)	2/41 (4.9)	0/41 (0.0)	41/41 (100.0)	41/41 (100.0)	22/41 (53.7)	26/41 (63.4)	15/41 (36.6)	0/41 (0.0)	3.01 (1.32)	0 (0)	5 (12)
FUTURE	Netherlands	18	44.5 (5.3)	9/18 (50.0)	0/18 (0.0)	7/18 (38.9)	0/18 (0.0)	0/18 (0.0)	0/18 (0.0)	12/18 (66.7)	18/18 (100.0)	1/18 (5.6)	18/18 (100.0)	0/18 (0.0)	0/18 (0.0)	0.67 (0.72)	0 (0)	4 (22)

Heidelberg <sup>3</sup> <sub>1</sub>	Germany	607	64.3 (14.0)	225/60 7 (37.1)	110/60 7 (18.1)	465/607 (76.6)	-	92/607 (15.2)	1/607 (0.2)	501/607 (82.5)	607/60 7 (100.0)	138/607 (22.7)	488/60 7 (80.4)	109/60 7 (18.0)	10/607 (1.6)	4.00 (1.27)	3 (0.49)	28 (4.6)
NNI	Singapore	182	57.7 (11.5)	56/182 (30.8)	28/181 (15.5)	142/182 (78.0)	59/182 (32.4)	26/182 (14.3)	0/182 (0.0)	182/182 (100.0)	0/182 (0.0)	49/182 (26.9)	150/18 2 (82.4)	23/182 (12.6)	9/182 (4.9)	0.80 (0.63)	0 (0)	0 (0)
OXVASC <sup>32</sup>	UK	106 7	68.3 (14.0)	508/10 67 (47.6)	164/10 66 (15.4)	581/106 6 (54.5)	-	-	-	502/1067 (47.0)	0/1067 (0.0)	157/1067 (14.7)	949/10 67 (88.9)	112/10 67 (10.5)	6/1067 (0.6)	3.41 (1.53)	11 (1)	78 (7.3)
HKU <sup>32</sup>	Hong Kong	966	68.9 (12.2)	388/96 6 (40.2)	124/96 6 (12.8)	628/966 (65.0)	272/96 6 (28.2)	93/966 (9.6)	12/966 (1.2)	966/966 (100.0)	966/96 6 (100.0)	433/966 (44.8)	862/96 6 (89.2)	63/966 (6.5)	41/966 (4.2)	2.90 (1.49)	19 (2)	89 (9.2)
Soo <sup>33</sup>	Hong Kong	178	73.4 (9.6)	82/178 (46.1)	175/17 8 (98.3)	155/178 (87.1)	50/178 (28.1)	34/178 (19.1)	3/178 (1.7)	152/178 (85.4)	178/17 8 (100.0)	66/178 (37.1)	5/178 (2.8)	7/178 (3.9)	166/17 8 (93.3)	1.85 (1.44)	1 (0.56)	5 (2.8)
SIGNaL	UK	206	72.4 (14.0)	85/206 (41.3)	65/206 (31.6)	146/206 (70.9)	49/206 (23.8)	55/206 (26.7)	8/206 (3.9)	185/206 (89.8)	140/20 6 (68.0)	92/206 (44.7)	163/20 6 (79.1)	9/206 (4.4)	34/206 (16.5)	0.60 (0.20)	1 (0.49)	24 (12)
Total		157 84	70.7 (12.2)	6697/1 5784 (42.4)	6882/1 5728 (43.8)	11222/1 5750 (71.3)	3208/1 3782 (23.3)	2300/1 4687 (15.7)	165/130 37 (1.3)	12804/15 774 (81.2)	4757/1 5759 (30.2)	4164/157 84 (26.4)	8733/1 5781 (55.3)	4759/1 5781 (30.2)	2289/1 5781 (14.5)	2.03 (1.53)	184 (1.2)	1048 (6.6)

Values shown are prevalence (%) or mean (SD). “ICH event (%)” and “IS event (%)” refer to the number and percentage of each cohort who experienced an event during follow-up. Studies without references are unpublished. FUTURE: Follow-Up of Transient ischemic attack and stroke patients and Unelucidated Risk factor Evaluation study. HAGAKURE: Hypertension, Amyloid, and aGe Associated Kaleidoscopic brain lesions on CT/MRI Undertaken with stroke Registry. HBS: Heart Brain Interactions Study. NNI: National Neuroscience Institute, Singapore. NOACISP: Novel Oral Anticoagulants in Stroke Patients, Basel; [NCT02353585](https://clinicaltrials.gov/ct2/show/study/NCT02353585). SIGNaL: Stroke Investigation in North and Central London. STROKDEM: Study of Factors Influencing Post-stroke Dementia.

### Supplementary Table 3: Interaction terms

Each interaction was tested individually as an addition to a model comprising all candidate predictors for each outcome. The association of each variable tested is shown at each level of the interacting variable, including the interaction but not the main effect of the interacting variable. When testing interactions with antiplatelet vs anticoagulant treatment, we omitted the three-level antithrombotic treatment to avoid collinearity. CMB recoded describes CMB burden following recategorisation as a four-level variable to reduce sparseness.

#### A: Interactions with antithrombotic treatment

Variable	Anticoagulant (HR, 95% CI)	Antiplatelet (HR, 95% CI)	P-value for interaction
<b>ICH</b>			
CMB 0	1	1	0.36
CMB 1	2.11 (1.28 – 3.48)	1.72 (0.94 – 3.19)	
CMB 2 - 4	2.01 (0.98 – 4.11)	2.33 (1.37 – 3.96)	
CMB 5 - 10	1.25 (0.32 – 4.90)	4.66 (2.47 – 8.80)	
CMB 11 - 19	5.67 (2.17 – 14.8)	4.53 (2.74 – 7.49)	
CMB 20+	3.15 (0.42 – 23.45)	15.01 (7.06 – 31.92)	
Age (years)	1.04 (1.02 – 1.06)	1.03 (1.02 – 1.05)	0.66
Female sex	1.16 (0.81 – 1.66)	0.87 (0.54 – 1.40)	0.29
Presentation with ischaemic stroke	1.19 (0.49 – 2.89)	0.91 (0.34 – 2.48)	0.71
SWI MRI sequence used	0.73 (0.43 – 1.23)	0.42 (0.14 – 1.26)	0.28
Atrial fibrillation present	0.70 (0.29 – 1.73)	1.68 (0.96 – 2.91)	0.09
Hypertension present	0.85 (0.55 – 1.30)	1.17 (0.62 – 2.23)	0.41
Diabetes present	1.63 (0.97 – 2.73)	0.83 (0.45 – 1.50)	0.10
Ischaemic stroke before index event	1.30 (0.92 – 1.84)	1.41 (0.84 – 2.39)	0.81
Previous intracranial haemorrhage	1.98 (0.83 – 4.74)	7.39 (4.11 – 13.29)	0.011
East Asian population	1.17 (0.70 – 1.99)	3.21 (0.96 – 10.7)	0.09
<b>Ischaemic stroke</b>			
CMB 0	1	1	0.54
CMB 1	0.92 (0.66 – 1.28)	1.16 (0.87 – 1.53)	
CMB 2 - 4	1.16 (0.91 – 1.48)	1.32 (1.06 – 1.66)	
CMB 5 - 10	0.95 (0.47 – 1.91)	1.98 (1.32 – 2.96)	
CMB 11 - 19	1.43 (0.69 – 2.93)	1.44 (0.68 – 3.06)	
CMB 20+	1.85 (0.78 – 4.39)	1.94 (1.29 – 2.92)	
Age (years)	1.02 (1.00 – 1.03)	1.02 (1.01 – 1.03)	0.69
Female sex	1.10 (0.88 – 1.38)	0.88 (0.71 – 1.09)	0.15
Presentation with ischaemic stroke	1.14 (0.71 – 1.82)	1.42 (0.93 – 2.15)	0.39
GRE MRI sequence used	0.94 (0.60 – 1.45)	0.50 (0.23 – 1.10)	0.04
Atrial fibrillation present	0.72 (0.43 – 1.21)	1.81 (1.30 – 2.50)	0.0040
Hypertension present	1.07 (0.79 – 1.45)	1.07 (0.74 – 1.55)	0.98
Diabetes present	1.37 (1.08 – 1.73)	1.25 (1.03 – 1.53)	0.53
Ischaemic stroke before index event	1.82 (1.22 – 2.71)	1.86 (1.48 – 2.34)	0.92
Previous intracranial haemorrhage	1.04 (0.49 – 2.22)	1.63 (0.79 – 3.35)	0.40
East Asian population	1.77 (1.12 – 2.81)	1.45 (0.49 – 4.28)	0.67

#### B: Interactions with MRI sequence type

Variable	GRE	SWI	P-value for interaction
<b>ICH</b>			
CMB 0	1	1	0.50
CMB 1	2.28 (1.59 – 3.26)	1.09 (0.35 – 3.40)	
CMB 2 - 4	2.50 (1.60 – 3.89)	1.32 (0.51 – 3.37)	
CMB 5 - 10	2.91 (1.27 – 6.66)	3.40 (1.21 – 9.48)	
CMB 11 - 19	5.09 (2.82 – 9.19)	4.20 (1.87 – 9.45)	
CMB 20+	9.14 (3.22 – 25.93)	8.35 (2.17 – 32.13)	
<b>Ischaemic stroke</b>			
CMB 0	1	1	0.0065
CMB 1	1.09 (0.80 – 1.49)	0.99 (0.69 – 1.41)	
CMB 2 - 4	1.30 (1.12 – 1.50)	1.17 (0.75 – 1.81)	
CMB 5 - 10	1.91 (1.24 – 2.93)	1.28 (0.77 – 2.14)	
CMB 11 - 19	2.19 (1.14 – 4.21)	0.44 (0.21 – 0.95)	
CMB 20+	1.92 (1.29 – 2.84)	1.83 (0.95 – 3.50)	
CMB recoded 0	1	1	0.18
CMB recoded 1	1.09 (0.80 – 1.49)	0.99 (0.69 – 1.41)	
CMB recoded 2 - 4	1.30 (1.12 – 1.50)	1.17 (0.75 – 1.81)	
CMB recoded 5+	1.97 (1.38 – 2.82)	1.17 (0.75 – 1.83)	

**Supplementary Table 4: Additional variables**

Predictor	Prevalence or Median	HR (95% CI)*	P-value
<b>ICH</b>			
Hyperlipidaemia	5,880/13,128 (44.8%)	1.02 (0.66-1.57)	0.94
Current smoker	1,708/10,357 (16.5%)	1.01 (0.67-1.53)	0.94
Fazekas score (continuous)	1 (IQR 1 – 2)	1.06 (0.71-1.59)	0.78
Fazekas score 2+	3,777/9,366 (40.2%)	1.47 (0.41-1.70)	0.21
Strictly deep CMBs	1005/11,877 (8.5%)	1.55 (0.73-3.31)	0.26
Strictly lobar CMBs	1,146/11,874 (9.7%)	0.69 (0.31-1.51)	0.36
Mixed CMBs	938/11,878 (8.2%)	0.87 (0.45-1.66)	0.67
<b>IS</b>			
Hyperlipidaemia	5,889/13,146 (44.8%)	0.93 (0.72-1.20)	0.57
Current smoker	1,709/10,375 (16.5%)	1.10 (0.86-1.41)	0.43
Fazekas score (continuous)	1 (IQR 1 – 2)	1.02 (0.80-1.31)	0.85
Fazekas score 2+	3,786/9,414 (40.2%)	1.12 (0.82-1.53)	0.47
Strictly deep CMBs	1,007/11,895 (8.5%)	1.20 (0.95-1.52)	0.080
Strictly lobar CMBs	1,146/11,892 (9.7%)	0.96 (0.71-1.30)	0.80
Mixed CMBs	971/11,896 (8.2%)	0.79 (0.54-1.15)	0.23

\*Adjusted for other components of main model

CMB: cerebral microbleed; ICH: intracranial haemorrhage; IS: ischaemic stroke

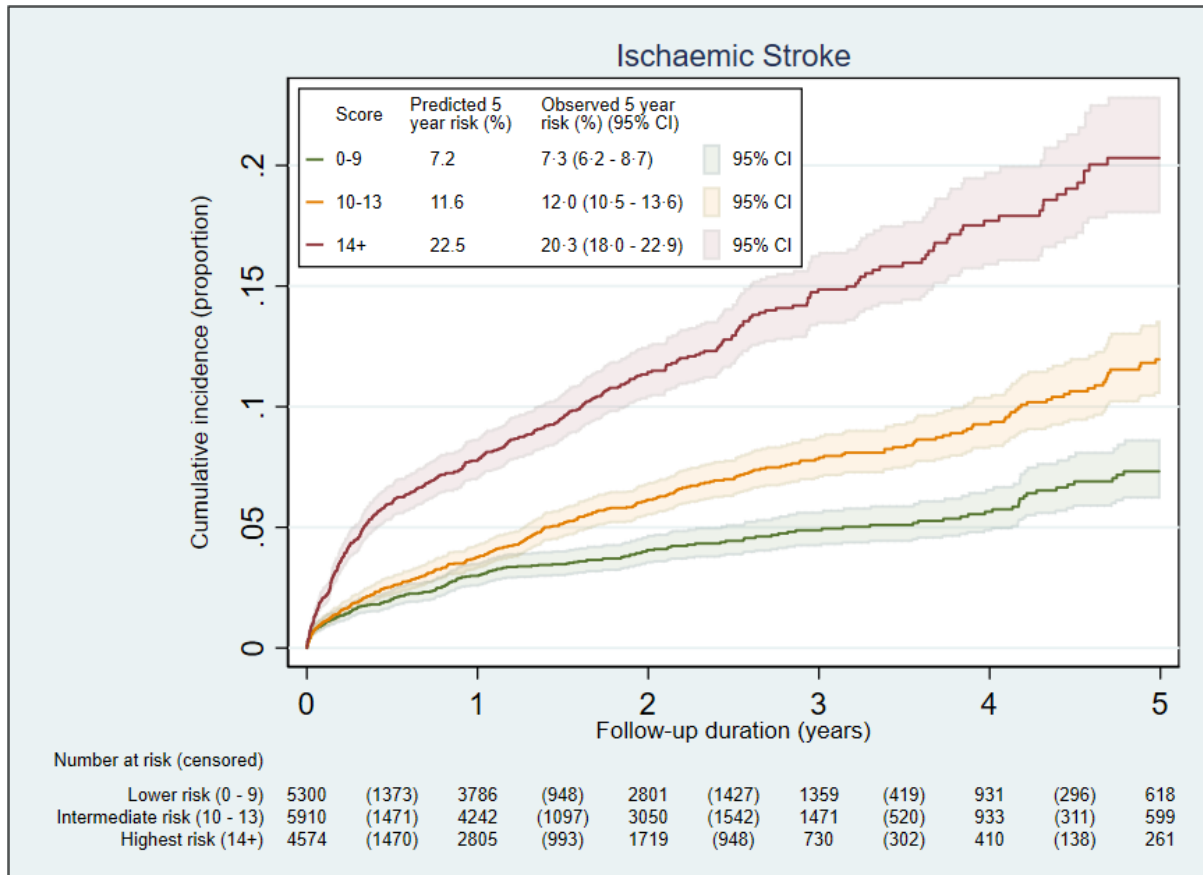
**Supplementary Table 5: Characteristics of participants in highest-risk group for ICH and lower-risk group for IS**

Values show prevalence for categorical variables, and mean (SD) or median (IQR) for continuous variables.

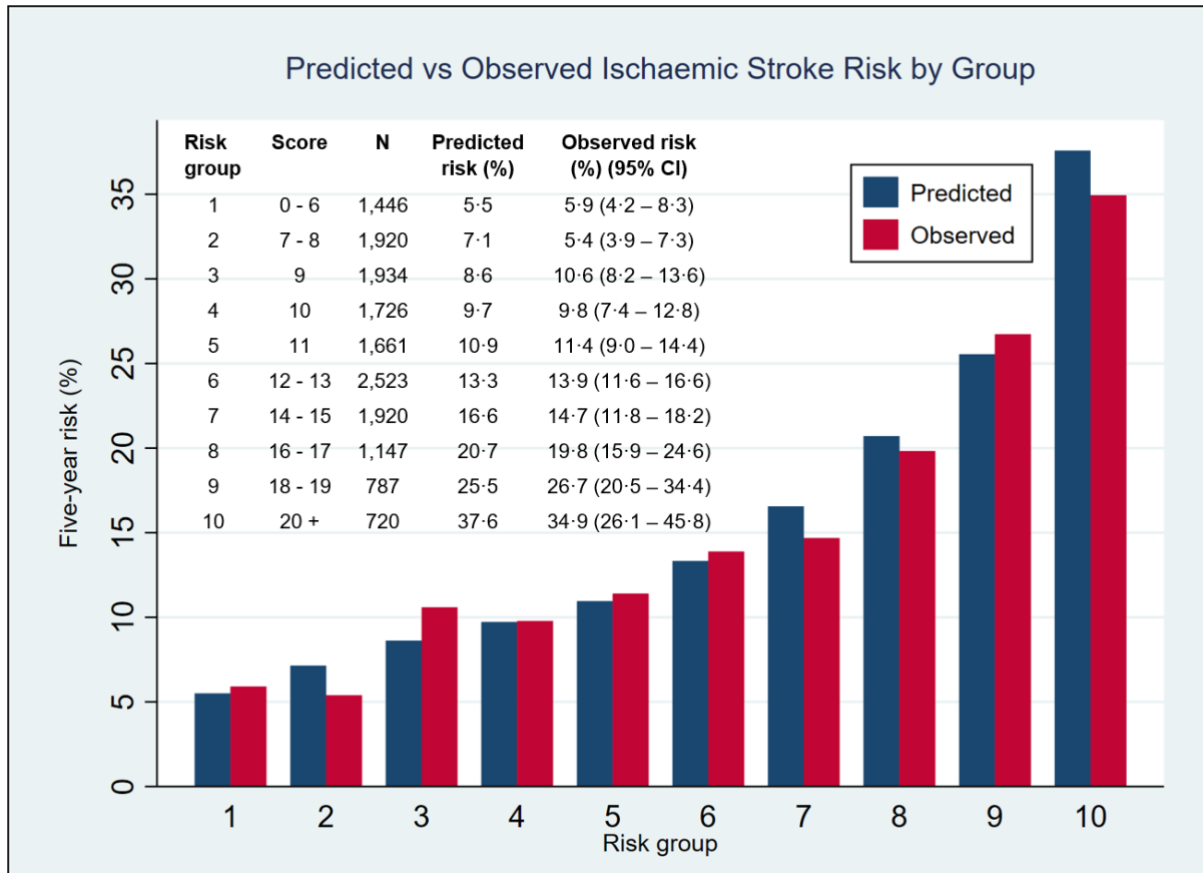
Variable		Group (n = 104)	Remainder (n = 11,849)
Age		80.9 (8.11)	71.4 (11.7)
Female sex		57/104 (54.8%)	5,055/11,849 (42.7%)
East Asian population		4/104 (3.85%)	4,423/11,849 (37.3%)
Hypertension		81/104 (77.9%)	8,613/11,849 (72.8%)
Atrial fibrillation		102/104 (98.1%)	5,898/11,849 (49.8%)
Previous IS		1/104 (0.96%)	1,878/11,849 (15.6%)
Previous ICH		17/104 (16.4%)	131/11,849 (1.11%)
Diabetes mellitus		9/104 (8.7%)	2,825/11,849 (23.8%)
Hyperlipidaemia		42/104 (41.6%)	5,236/11,849 (44.7%)
CMB burden	0	13/104 (12.5%)	8,531/11,849 (72.0%)
	1	60/104 (57.7%)	1,404/11,849 (11.9%)
	2 – 4	28/104(26.9%)	1,207/11,849 (10.2%)
	5 – 10	1/104 (1.0%)	382/11,849 (3.2%)
	11 - 19	1/104 (1.0%)	178/11,849 (1.5%)
	20 +	1/104 (1.0%)	147/11,849 (1.2%)
Antithrombotic treatment	AP only	2/104 (1.9%)	8,670/11,849 (48.6%)
	DOAC	19/104(18.3.3%)	2,215/11,849 (33.1%)
	Warfarin/VKA	83/104 (79.8.8%)	4,612/11,849 (18.3%)



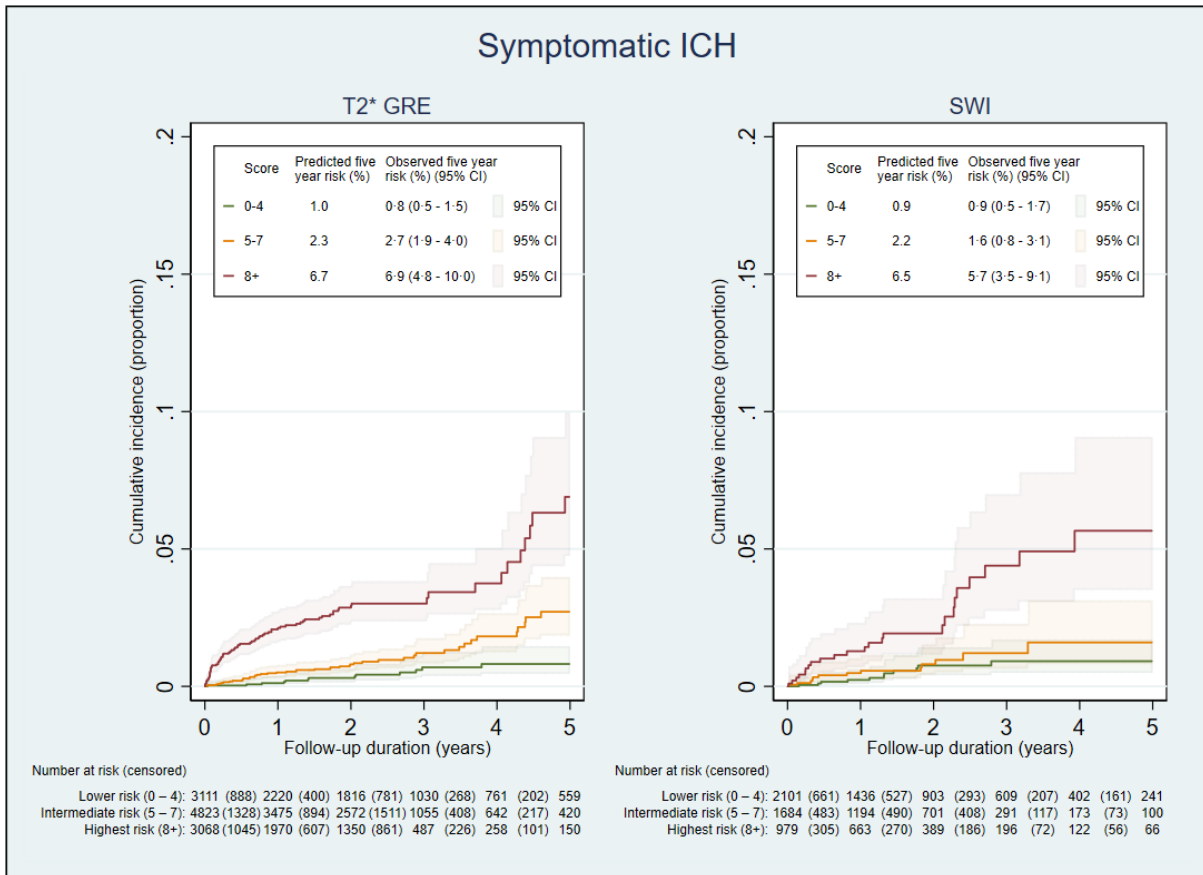
**Supplementary Figure 1: Kaplan-Meier plot and risk table for ischaemic stroke model**



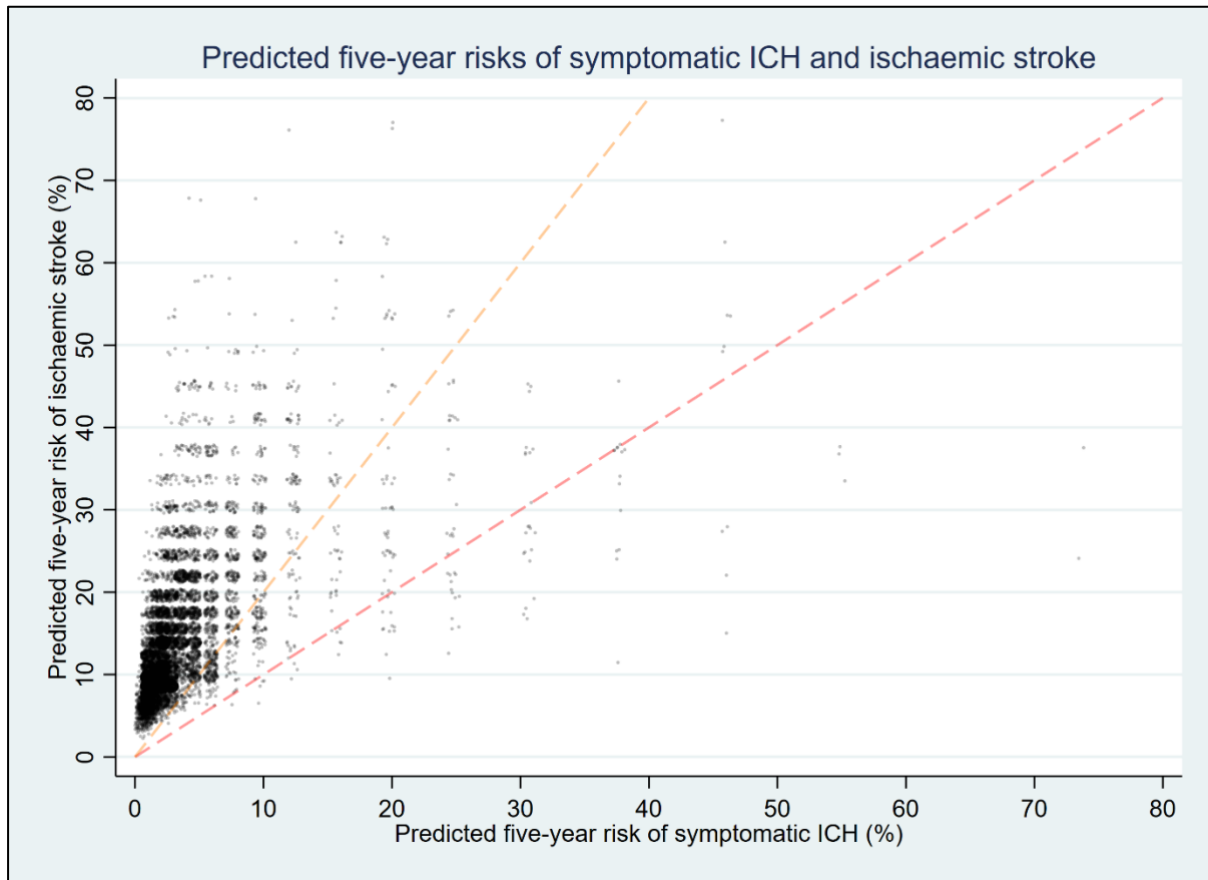
Supplementary Figure 2: Model calibration – ischaemic stroke



**Supplementary Figure 3: ICH model performance by MRI sequence type**

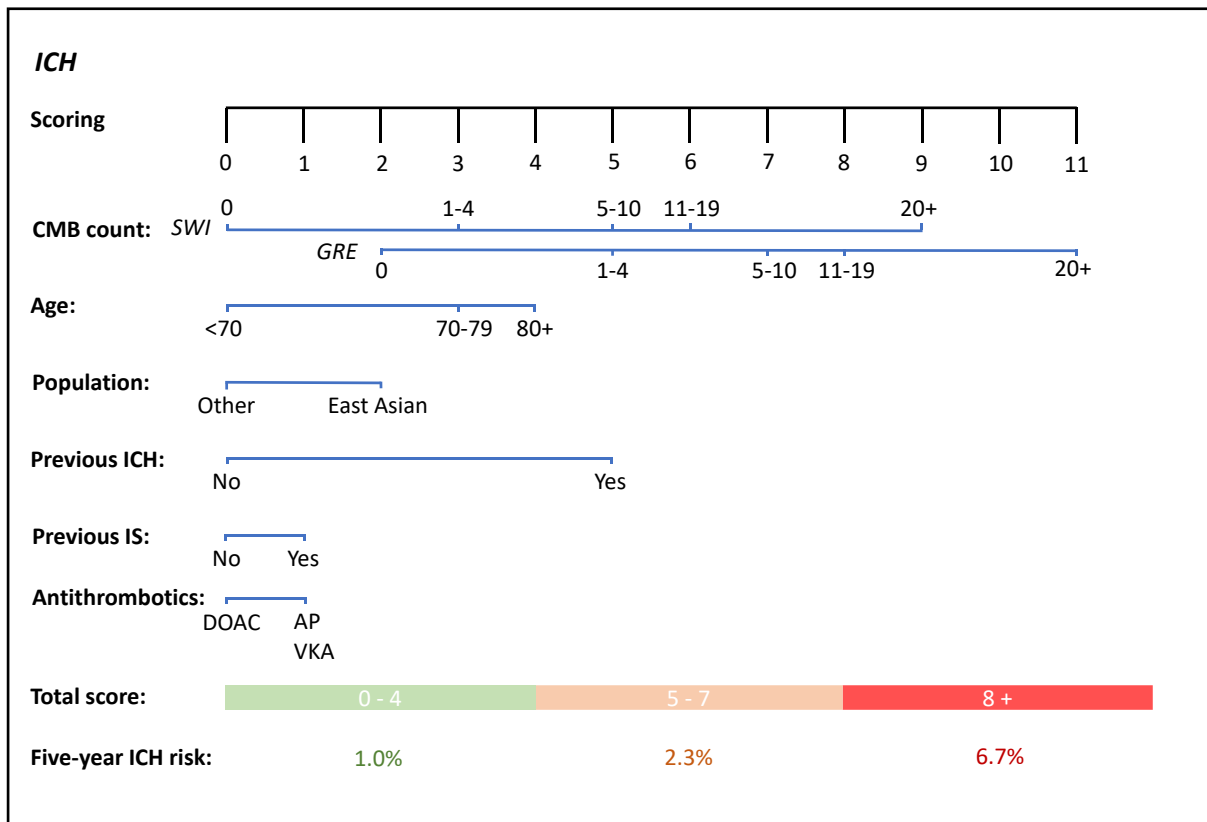


Performance measure	T2* GRE	SWI
C-index (optimism-adjusted)	0.75 (0.70 – 0.79)	0.70 (0.62 – 0.79)
Calibration slope	0.94 (0.76 – 1.12)	0.94 (0.79 – 1.09)

**Supplementary Figure 4: Comparative risks of symptomatic ICH and ischaemic stroke**

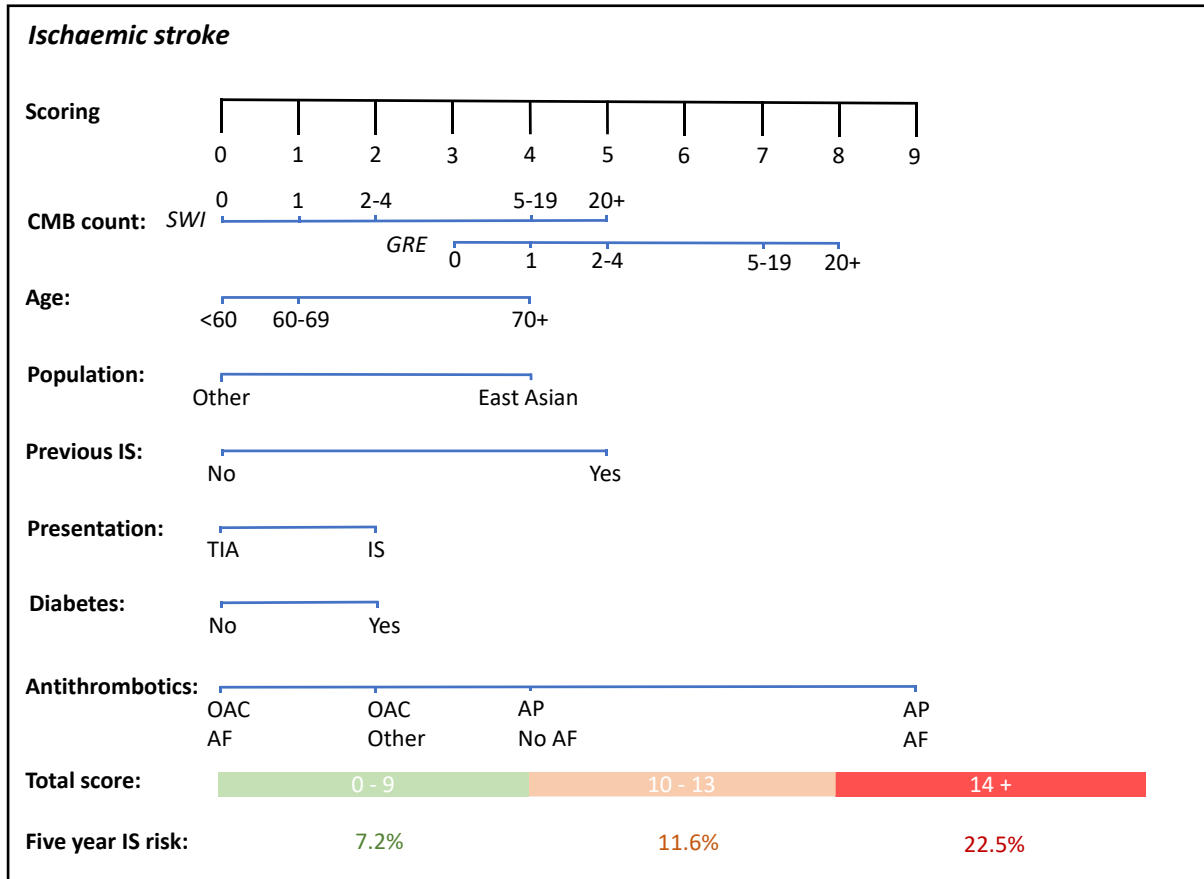
Predicted five-year risks from ICH and ischaemic risk scores for all 11,953 participants with all variables available without imputation. The red line indicates equality between predicted risks of ICH and IS; the orange line indicates predicted IS risk twice that of ICH. For presentation, markers are translucent and jittered.

Supplementary Figure 5: Nomogram for symptomatic ICH risk



For each variable, select the appropriate category, then read the score for that variable from the scoring bar. After summing the total score, select the corresponding 'total score' category and read the five-year ICH risk below.

Supplementary Figure 6: Nomogram for ischaemic stroke risk



For each variable, select the appropriate category, then read the score for that variable from the scoring bar. After summing the total score, select the corresponding 'total score' category and read the five-year IS risk below.

## Supplementary References

- 1 Vernooji MW, van der Lugt A, Ikram MA, et al. Prevalence and risk factors of cerebral microbleeds: the Rotterdam Scan Study. *Neurology* 2008; **70(14)**:1208–14.
- 2 Mori N, Miki Y, Kikuta K, et al. Microbleeds in moyamoya disease: susceptibility-weighted imaging versus T2\*-weighted imaging at 3 Tesla. *Invest Radiol* 2008; **43(8)**:574–9.
- 3 Nandigam RNK, Viswanathan A, Delgado P, et al. MR imaging detection of cerebral microbleeds: effect of susceptibility-weighted imaging, section thickness, and field strength. *AJNR Am J Neuroradiol* 2009; **30(20)**: 338.
- 4 Goos JDC, van der Flier WM, Knol DL, et al. Clinical relevance of improved microbleed detection by susceptibility-weighted magnetic resonance imaging. *Stroke* 2011; **42(7)**: 1894–900.
- 5 Cheng AL, Batool S, McCreary CR, et al. Susceptibility-weighted imaging is more reliable than T2\*-weighted gradient-recalled echo MRI for detecting microbleeds. *Stroke* 2013; **44**:2782–2786.
- 6 Guo LF, Wang G, Zhu XY, et al. Comparison of ESWAN, SWI-SPGR, and 2D T2\*-weighted GRE sequence for depicting cerebral microbleeds. *Clin Neuroradiol* 2013; **32(2)**:121–7.
- 7 Shams S, Martola J, Cavallin, et al. SWI or T2\*: Which MRI sequence to use in the detection of cerebral microbleeds? The Karolinska Imaging Dementia Study. *Am J Neuroradiol* 2015; **36(6)**: 1089–1095.
- 8 Shao L, Wang M, Ge X-H, et al. The use of susceptibility-weighted imaging to detect cerebral microbleeds after lacunar infarction. *Eur Rev Med Pharmacol Sci* 2017; **21(13)**: 3105–3112.
- 9 Wilson D, Ambler G, Shakeshaft C, et al, and the CROMIS-2 collaborators. Cerebral microbleeds and intracranial haemorrhage risk in patients anticoagulated for atrial fibrillation after acute ischaemic stroke or transient ischaemic attack (CROMIS-2): a multicentre observational cohort study. *Lancet Neurol* 2018; **17**: 539–47
- 10 Gratz PP, El-Koussy M, Hsieh K, et al. Preexisting cerebral microbleeds on susceptibility-weighted magnetic resonance imaging and post-thrombolysis bleeding risk in 392 patients. *Stroke* 2014; **45**: 1684–88.
- 11 Yang J, Wong A, Wang Z, et al. Risk factors for incident dementia after stroke and transient ischemic attack. *Alzheimers Dement* 2015; **11**: 16–23.
- 12 Ben Assayag E, Korczyn AD, Giladi N, et al. Predictors for poststroke outcomes: the Tel Aviv Brain Acute Stroke Cohort (TABASCO) study protocol. *Int J Stroke* 2012; **7**: 341–47.
- 13 Chabriat H, Maeder P, Gass A, Michel P, Bracoud L, Hennerici M. Results of the PERFORM magnetic resonance imaging study. *J Neurol* 2013; **260**: 3071–76.
- 14 Truijman MT, Kooi ME, van Dijk AC, et al. Plaque At RISK (PARISK): prospective multicenter study to improve diagnosis of high-risk carotid plaques. *Int J Stroke* 2014; **9**: 747–54.
- 15 Yoshimura S, Koga M, Sato S, et al. Two-year outcomes of anticoagulation for acute ischemic stroke with nonvalvular atrial fibrillation—SAMURAI-NVAF Study. *Circ J* 2018; **82**: 1935–42.
- 16 van Leijssen EMC, van Uden IWM, Ghafoorian M, et al. Nonlinear temporal dynamics of cerebral small vessel disease: The RUN DMC study. *Neurology* 2017; **89**: 1569–77.
- 17 Karayiannis C, Soufan C, Chandra RV, et al. Prevalence of brain MRI markers of hemorrhagic risk in patients with stroke and atrial fibrillation. *Front Neurol* 2016; **7**: 151
- 18 Fluri F, Jax F, Amort M, et al. Significance of microbleeds in patients with transient ischaemic attack. *Eur J Neurol* 2012; **19**: 522–24.
- 19 Song TJ, Kim J, Song D, et al. Association of cerebral microbleeds with mortality in stroke patients having atrial fibrillation. *Neurology* 2014; **83**: 1308–15.
- 20 Callaly E, Ni Chroinin D, Hannon N, et al. Rates, predictors, and outcomes of early and late recurrence after stroke: the north Dublin population stroke study. *Stroke* 2016; **47**: 244–46.
- 21 Imaizumi T, Inamura S, Nomura T. The severities of white matter lesions possibly influence the recurrences of several stroke types. *J Stroke Cerebrovasc Dis* 2014; **23**: 1897–902.

- 22 Soo Y, Abrigo JM, Leung KT, et al, and the IPAAC study group. Risk of intracerebral haemorrhage in Chinese patients with atrial fibrillation on warfarin with cerebral microbleeds: the IPAAC-Warfarin study. *J Neurol Neurosurg Psychiatry* 2019; **90**: 428–35.
- 23 Douven E, Schievink SHJ, Verhey FRJ, et al. The cognition and affect after stroke—a prospective evaluation of risks (CASPER) study: rationale and design. *BMC Neurol* 2016; **16**: 1–11.
- 24 Martí-Fàbregas J, Medrano-Martorell S, Merino E, et al. MRI predicts intracranial hemorrhage in patients who receive long-term oral anticoagulation. *Neurology* 2019; **92**(21):e2432-e2443
- 25 Thijs V, Lemmens R, Schoofs C, et al. Microbleeds and the risk of recurrent stroke. *Stroke* 2010; **41**: 2005–09
- 26 Yan S, Jin X, Zhang X, Zhang S, Liebeskind DS, Lou M. Extensive cerebral microbleeds predict parenchymal haemorrhage and poor outcome after intravenous thrombolysis. *J Neurol Neurosurg Psychiatry* 2015; **86**: 1267–72.
- 27 Kwa VI, Algra A, Brundel M, Bouvy W, Kappelle LJ, and the MICRO Study Group. Microbleeds as a predictor of intracerebral haemorrhage and ischaemic stroke after a TIA or minor ischaemic stroke: a cohort study. *BMJ Open* 2013; **3**: e002575.
- 28 Orken DN, Uysal E, Timer E, Kuloglu-Pazarcı N, Mumcu S, Forta H. New cerebral microbleeds in ischemic stroke patients on warfarin treatment: two-year follow-up. *Clin Neurol Neurosurg* 2013; **115**: 1682–85.
- 29 Zerna C, Modi J, Bilston L, Shoamanesh A, Coutts SB, Smith EE. Cerebral microbleeds and cortical superficial siderosis in patients presenting with minor cerebrovascular events. *Stroke* 2016; **47**: 2236–41.
- 30 Wardlaw J, Makin S, Valdés Hernández M, et al. Blood-brain barrier failure as a core mechanism in cerebral small vessel disease and dementia: evidence from a cohort study. *Alzheimers Dement* 2017; **13**: 634–43.
- 31 Horstmann S, Möhlenbruch M, Wegele C, et al. Prevalence of atrial fibrillation and association of previous antithrombotic treatment in patients with cerebral microbleeds. *Eur J Neurol* 2015; **22**: 1355–62.
- 32 Lau KK, Lovelock CE, Li L, et al. Antiplatelet treatment after transient ischemic attack and ischemic stroke in patients with cerebral microbleeds in 2 large cohorts and an updated systematic review. *Stroke* 2018; **49**: 1434–42.
- 33 Soo Y, Abrigo J, Leung KT, et al. Correlation of non-vitamin K antagonist oral anticoagulant exposure and cerebral microbleeds in Chinese patients with atrial fibrillation. *J Neurol Neurosurg Psychiatry* 2018; **89**: 680–86.