

Manuscript Number:

Title: Prediction of final infarct volume from native CT perfusion and treatment parameters using deep learning

Article Type: Research Paper

Keywords: Stroke; CT Perfusion; Final Infarct Prediction; Deep Learning

Corresponding Author: Dr. David Robben,

Corresponding Author's Institution: KU Leuven

First Author: David Robben

Order of Authors: David Robben; Anna Boers, PhD; Henk Marquering, PhD; Lucianne Langezaal, MD; Yvo Roos, MD PhD; Robert van Oostenbrugge, MD PhD; Wim van Zwam, MD PhD; Diederik Dippel, MD, PhD; Charles Majoie, MD, PhD; Aad van der Lugt, MD, PhD; Robin Lemmens, MD, PhD; Paul Suetens, PhD

Abstract: CT Perfusion (CTP) imaging has gained importance in the diagnosis of acute stroke.

Conventional perfusion analysis performs a deconvolution of the measurements and thresholds the perfusion parameters to determine the tissue status.

We pursue a data-driven and deconvolution-free approach, where a deep neural network learns to predict the final infarct volume directly from the native CTP images and metadata such as the time parameters and treatment.

This would allow clinicians to simulate various treatments and gain insight into predicted tissue status over time.

We demonstrate on a multicenter dataset that our approach is able to predict the final infarct and effectively uses the metadata.

An ablation study shows that using the native CTP measurements instead of the deconvolved measurements improves the prediction.

Prediction of final infarct volume from native CT perfusion and treatment parameters using deep learning

David Robben^{a,b,c,*}, Anna M.M. Boers^d, Henk A. Marquering^d, Lucianne L.C.M. Langezaal^h, Yvo B.W.E.M. Roos^d, Robert J. van Oostenbrugge^f, Wim H. van Zwam^f, Diederik W.J. Dippel^g, Charles B.L.M. Majoie^e, Aad van der Lugt^g, Robin Lemmens^{i,j,k}, Paul Suetens^{a,b}

^aMedical Imaging Research Center (MIRC), KU Leuven, Leuven, Belgium

^bMedical Image Computing (MIC), ESAT-PSI, Department of Electrical Engineering, KU Leuven, Leuven, Belgium

^cIcometrix, Leuven, Belgium

^dAmsterdam UMC, Amsterdam, the Netherlands

^eAmsterdam UMC, location AMC, Amsterdam, the Netherlands; Department of Radiology and Nuclear Medicine

^fMaastricht UMC, Maastricht, the Netherlands

^gErasmus MC, Rotterdam, the Netherlands

^hSt. Antonius Ziekenhuis, Nieuwegein, the Netherlands

ⁱDepartment of Neurosciences, Experimental Neurology, and Leuven Brain Institute (LBI), KU Leuven – University of Leuven, Leuven, Belgium

^jVIB, Center for Brain & Disease Research, Laboratory of Neurobiology, Leuven, Belgium

^kUniversity Hospitals Leuven, Department of Neurology, Leuven, Belgium

Abstract

CT Perfusion (CTP) imaging has gained importance in the diagnosis of acute stroke. Conventional perfusion analysis performs a deconvolution of the measurements and thresholds the perfusion parameters to determine the tissue status. We pursue a data-driven and deconvolution-free approach, where a deep neural network learns to predict the final infarct volume directly from the native CTP images and metadata such as the time parameters and treatment. This would allow clinicians to simulate various treatments and gain insight into predicted tissue status over time. We demonstrate on a multicenter dataset that our approach is able to predict the final infarct and effectively uses the metadata. An ablation study shows that using the native CTP measurements instead of the deconvolved measurements improves the prediction.

Keywords: Stroke, CT Perfusion, Final Infarct Prediction, Deep Learning

1. Introduction

Ischemic stroke, a major cause of mortality and disability worldwide, is an acute disease where the blood supply to the brain is hindered due to the occlusion of an artery. Due to the reduction in perfusion, neuronal functioning is impaired and if perfusion is not re-established, brain tissue becomes irreversibly damaged. Acute treatment aims at reopening the blocked artery through treatment with intra-venous thrombolytics and/or mechanical thrombectomy. Since both treatment options entail considerable costs and side effects (e.g. increased risk of haemorrhage), selection of patients who might benefit is important. In early studies, patient selection was mainly based on the time since stroke onset; e.g. intravenous thrombolysis with tPA is shown to be beneficial within 4.5 hours (Hacke et al., 2008). Recent studies typically select patients based on both time parameters and advanced neuroimaging, allowing patient-specific assessment of the benefits and risk of treatment.

One commonly used imaging modality for acute stroke diagnosis is CT Perfusion (CTP), which consists of a series of

3D CT scans acquired after intra-venous injection of contrast agent. The resulting 4D image shows the passage of contrast agent through the brain: in each spatial voxel we have a time-attenuation curve showing the variation of intensity due to the contrast agent. Much research has gone into the quantification of these images, particularly aiming at the estimation of perfusion parameters such as cerebral blood flow (CBF), cerebral blood volume (CBV) and Tmax. The most used approach for perfusion analysis works as follows (Fieselmann et al., 2011). First the time-attenuation curves are converted to time-concentration curves that show the concentration of contrast agent over time. In CTP, there is a linear relationship between the change in attenuation and the concentration. Then an arterial input function (AIF) is determined: this is the time-concentration curve in one of the large feeding arteries of the brain. Subsequently, the time-concentration curve in each voxel is deconvolved with the AIF, resulting in deconvolved time-concentration curves. These curves correspond to what would have been measured if the contrast bolus was infinitely short and infinitely concentrated in the feeding artery – indeed, these curves are impulse response functions (IRF). As such, the deconvolved time-concentration curves are no longer influenced by the contrast injection protocol or the cardiac system of the

*Corresponding author

Email address: david.robbe@kuleuven.be (David Robben)

particular patient. Finally, under some reasonable assumptions, the perfusion parameters can be derived from these curves. For example $\text{CBF} \propto \max_t \text{IRF}(t)$ and $\text{Tmax} = \text{argmax}_t \text{IRF}(t)$.

The deconvolution operation plays a central role in current perfusion analysis. However, deconvolution depends crucially on the accurate selection of an AIF. Additionally, deconvolution is a mathematically ill-posed problem and that is problematic given the low signal to noise ratio of perfusion images (Fieselmann et al., 2011). Perfusion analysis software accounts for this by preprocessing the images and by regularizing the deconvolution. The preprocessing mainly aims at reducing the noise through motion correction, temporal and spatial smoothing, and possibly spatial downsampling. The regularization of the deconvolution suppresses the high frequency signal in the reconstructed impulse response function. This can be done in singular value decomposition (SVD) based deconvolution by regularizing the singular values, e.g. using Tikhonov regularization. Nevertheless, the deconvolution-based perfusion parameters remain noise sensitive and research for improved algorithms (Boutelier et al., 2012) or even deconvolution-free summary parameters (Meijs et al., 2016) remains ongoing.

The resulting perfusion parameters are used to assess the tissue status of the brain where – apart from healthy tissue – two types are distinguished. Tissue that is already irreversibly damaged is called the infarct core. Tissue that is at risk, i.e. tissue that will undergo infarction if not eventually reperfused, is called the penumbra. The combination of infarct core and penumbra is called the perfusion lesion. In current clinical practice, the perfusion lesion and core are determined by thresholding the perfusion parameters. The optimal choice of perfusion parameters and thresholds depends on the deconvolution method (Bivard et al., 2013).

Knowledge about the volumes of the core and the penumbra is of great clinical importance, as they are used to determine which treatment a patient should get (Albers, 2018; Nogueira et al., 2018). However, the method that is used to analyze the CTP images plays an important role in the accuracy of these volume estimations (Fahmi et al., 2012; Bivard et al., 2013). Although great progress has been made in the previous years, there is room and need for improvement.

The binary distinction between core and penumbra is somewhat artificial: as time passes, the core will become larger, as more and more penumbral tissue becomes irreversibly damaged. The infarct growth rate differs between patients (Wheeler et al., 2015; Guenego et al., 2018). It depends on factors such as the location of the thrombus and the patient’s vascular connectivity: there is considerable inter-subject variation in the amount of vascular redundancy and hence in the amount collateral blood supply to the affected region (Liebeskind, 2003). Knowledge about the growth rate of the core is of clinical importance, as it allows assessment of the relevance of transferring a patient to a comprehensive stroke center depending on transport time. Hence it is valuable to not only predict core and penumbra from an acute CTP scan, but also how the core would evolve over time. Additionally, not every mechanical thrombectomy procedure achieves complete reperfusion. Although a more complete recanalization is arguably always bet-

ter (Kleine et al., 2017), it is interesting to take this into account in the model as it might give interventional radiologists information about the added value of an additional attempt after a partial recanalization.

1.1. Contributions

In this paper we propose to train a deep neural network to predict the final infarct from acute CTP images. The prediction takes into account not only the CTP measurements, but also the treatment parameters such as the time-to-recanalization and the completeness of recanalization. Once the network is trained, it can make predictions for new patients based on hypothetical treatment schemes. This allows to predict the ischemic core at baseline (i.e. the predicted final infarct in case of an immediate perfect recanalization), the perfusion lesion (i.e. the predicted final infarct in case of no recanalization) or any intermediate scenario. The latter can be relevant if e.g. we first need to transfer the patient and achieve recanalization at a particular later time point. This provides clinicians with additional information on the impact of potential treatment options. We show that our method takes this information effectively into account resulting in better predictions.

Another contribution of this work is that the predictions are made directly from the native CTP images while no explicit deconvolution or calculation of perfusion parameters is performed. We follow a true end-to-end learning approach and hence avoid the problematic deconvolution. We evaluate our approach on the data of the MR CLEAN trial and show the contributions of the various components of the method.

1.2. Related work

Estimation of tissue status and prediction of the final infarct based on perfusion measurements is a vast research domain. Early work aimed mainly at finding thresholds for various perfusion parameters that correlated well with the final infarct in patients with recanalization (with the final infarct closely related to the core) and patients without recanalization (final infarct equal to the perfusion lesion) (Wintermark et al., 2006; Bivard et al., 2013). These approaches are currently used in clinical practice.

Various works have suggested to use more advanced machine learning techniques to predict core and penumbra. Most of them use MR imaging which usually consists of two modalities: MR Perfusion, which is similar to CTP, and diffusion weighted imaging (DWI) (Wu et al., 2001; Scalzo et al., 2012; McKinley et al., 2017; Nielsen et al., 2018). The latter modality gives a clear signal regarding the viability of tissue and is considered the golden standard to identify ischemic tissue, making the prediction of final infarct easier than using only perfusion information. With the advent of mechanical thrombectomy, accurate determination of the time of recanalization became possible and this parameter was introduced in models. D’Esterre et al. (2015) investigated the influence of the time between onset and imaging and the time between imaging and recanalization, finding that the former does not and the latter does influence the optimal perfusion parameters thresholds to determine

155 the final infarct. Kemmling et al. (2015) proposed a multivariate
generalized linear model that predicts the final infarct in
a voxelwise fashion based on CTP perfusion parameters and
clinical parameters including a binary recanalization status and
the onset-to-recanalization duration. It was trained and cross-
160 validated on 161 subjects that underwent CTP imaging and me-
chanical thrombectomy. In a similar vein, the ISLES 2016 &
2017 challenges (Winzeck et al., 2018) invited researchers to
evaluate methods that predict the final infarct based on acute
DWI and MR Perfusion imaging. The organizers provided publicly
165 available training data and a blinded test set for the validation.
The challenge showed the competitive advantage of deep
neural networks.

All approaches discussed so far depend on deconvolution as
a first step, but there has been some work to avoid explicit de-
170 convolution. On one hand we can distinguish alternative per-
fusion parameters that do not require deconvolution, such as
the first moment of the time-concentration curve (Christensen
et al., 2009). On the other hand, we see approaches that aim at
replacing the traditional deconvolution analysis with a learned
175 alternative (Ho et al., 2016). However, this approach seems to
beg the question, since during training the ground truth per-
fusion parameters are provided by deconvolution analysis. In
our approach – starting from the native images and optimizing
the network for the best final infarct prediction – the optimal
180 features and how to calculate them is inferred directly from
the data. The disadvantage of this approach is that those fea-
tures no longer have a clear physiological interpretation such as
the perfusion parameters have, but depending on the applica-
tion, this might be a price worth paying. Recently Pinto et al.
185 (2018) proposed a method for the ISLES 2017 challenge that
uses, apart from the DWI image and the perfusion parameters,
also the native MR perfusion measurements to predict the final
infarct. They show that their method benefits from the native
measurements, but the obtained results are not as good as other
190 state-of-the-art approaches that did not include native mea-
surements, making it hard to assess the added value of the native
measurements. The method did not take the reperfusion sta-
tus or other treatment data into account, presumably because
the dataset was fairly homogenous, consisting of mostly early
195 reperfused patients.

2. Methods

We propose to use a voxelwise classification approach, where
a neural network learns the relation between the final infarct
status of a voxel (the output) and the CTP measurements and
the metadata (the input). The CTP measurements consists of
200 the time-attenuation curves of that voxel, its neighboring vox-
els and the voxel of the AIF. The metadata consists of four val-
ues: the time between stroke onset and CTP imaging, the time
between CTP imaging and the end of the mechanical thrombec-
tomy, the mTICI scale after thrombectomy and the persistence
205 of the occlusion at 24 hours CT angiography.

2.1. Preprocessing

There is considerable variability in the acquisition protocol
of CTP images and, due to the long acquisition time, the pa-
tient might move. During preprocessing, we account for both
aspects, aiming to reduce the unnecessary variation that the net-
work need to cope with. First, if the CTP was acquired with
gantry tilt, the CTP images are resampled to an orthogonal grid
that has the same x-y plane and an orthogonalized z-axis. Sec-
210 ond, the CTP scan is motion corrected by rigidly aligning the
volumes with the first volume. Registration is performed using
Elastix, optimizing for the sum of squared differences. Finally,
the images are spatially downsampled to $1.5 \times 1.5 \times 4 \text{ mm}^3$ and
temporally resampled to one image per two seconds. The rati-
onale is that the original high spatial resolution might help the
registrations, whereas for the perfusion analysis, which has a
notoriously low Signal to Noise Ratio (SNR), a high resolution
would only slow down processing. If the CTP was acquired
in shuttle mode, i.e. with the patient continuously moving back
and forth in the scanner resulting in variable scan times per CTP
volume, we account for this and resample the time series such
that each volume corresponds to a single time point.

2.2. Network

Our network is an extension of the model proposed by Kam-
nitsas et al. (2017) and has four different inputs. Each input
is followed by series of operations such as convolutions and
upsampling, called the pathway, and finally the outputs of the
pathways are concatenated and fed into a common pathway that
gives the voxelwise prediction. The first input is the CTP im-
age which has 3 spatial dimensions plus time. This input is fed
into a pathway consisting of 6 convolutional layers: three lay-
ers with 48 filters of $3 \times 3 \times 1$ and three layers with 64 filters of
 $3 \times 3 \times 3$. The second input is the downsampled CTP. The image
is downsampled with a factor 3 in plane, resulting in voxels of
 $4.5 \times 4.5 \times 4 \text{ mm}^3$ and which provides the network a wider spa-
tial context to base its prediction on. This second input’s path-
way has the same architecture as the first one and is followed
by an upsampling operation to recover the original resolution.
The third input is the arterial input function (AIF), which is a
one dimensional vector. This pathway consists of 2 convolution
layers, each with 48 filters of $1 \times 1 \times 1$, and an upsampling opera-
tion. The last input is the metadata (1D) and this pathway only
consists of an upsampling operation. At this point, the outputs
of the four pathways have the same spatial dimensions and are
concatenated in the feature dimension. This resulting output is
fed through 3 convolutional layers with each a $1 \times 1 \times 1$ kernel.
The first two have 150 filters and the final one has 1 filter and
gives the prediction.

In all convolutional layers, we use batch normalization (Ioffe
and Szegedy, 2015) and the PreLU activation function (He
et al., 2015).

This network has a fully convolutional structure, which al-
lows to use dense inference and training. By predicting multiple
adjacent voxels simultaneously, the computational efficiency is
increased because redundant calculation in the overlapping re-
ceptive fields of the output neurons are avoided. We use an

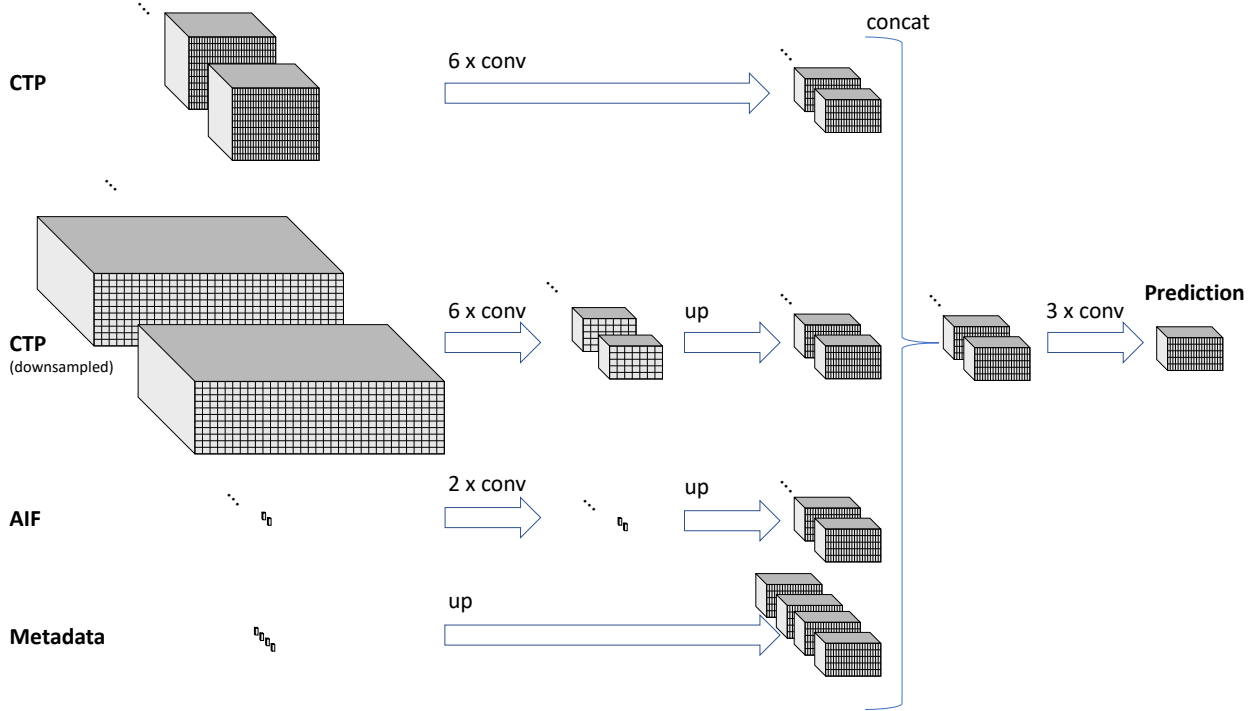


Figure 1: The proposed neural network. There are four inputs: the CTP (3D+time) the downsampled CTP (3D+time), the arterial input function (AIF, time) and the metadata (1D). The network has a fully convolutional structure, where each input can go through a series of convolutional layers before being upsampled to the original resolution. The outputs of the four pathways are concatenated and are passed through 3 convolutional layers with a $1 \times 1 \times 1$ kernel (acting as fully connected layers) before the prediction is given.

output size of $21 \times 21 \times 5$, giving the architecture visualized in Fig. 1.

The input intensities are normalized by first clipping them to the range of -100 to 1000 HU and then linearly transforming them to have mean of zero and a standard deviation of one.

During training, the network is optimized by stochastic gradient descent with Nesterov momentum for the weighted cross-entropy, with the positive class weighted ten times as heavy, resulting in balanced training. The training samples are uniformly chosen from within the intracranial volume and augmented by flipping samples left/right, small rotations, Gaussian noise and a CTP specific augmentation we introduced in (Robben and Suetens, 2018).

The CTP specific data augmentation exploits the fact that the perfusion measurements are a linear time invariant system. This means that, if the contrast injection was a bit later, both the AIF and the CTP timeseries would show the same delay. Similarly, if the injection was earlier, all curves would shift to the left. However, this has no influence on the actual tissue perfusion status or the viability of the tissue. If the concentration of the iodine in the contrast agent were a fraction higher or lower, the concentration curves would change with the same fraction. But again, this has no impact on the tissue status. Hence, we augment our training dataset by applying a random time shift (earlier or later) and a random scaling of the attenuation variation. The shift is randomly chosen between -4 and 6 time points (since our measurements are discrete) and the scaling has a log

normal distribution between with μ of 0 and σ of 0.3.

The method is implemented in Python using Keras and DeepVoxNet (Robben et al., 2018).

2.3. Ablation study

We want to measure the impact of the different design choices and hence we gradually ablate our method to understand how the different components contribute to the performance.

The impact of no deconvolution

To quantify the impact of the deconvolution-free approach we benchmark a network working on the deconvolved time-series. To obtain the deconvolved time series, we use Tikhonov regularized SVD-based deconvolution (Fieselmann et al., 2011) with the Volterra discretization scheme (Sourbron et al., 2007) – to which we simply refer as deconvolution. The deconvolution has one hyperparameter, the relative regularization parameter λ_{rel} which determines the amount of filtering and which is set to 0.4. As the deconvolution is very noise sensitive, we first perform a spatial Gaussian smoothing with an isotropic sigma of 2.5 mm. To make the comparison fair, we also test the proposed (i.e. the non-deconvolution based) network on this smoothed data - called **Proposed (smoothed)**. The deconvolved time series are used as input to the network **Proposed (deconvolved)**. This network and its training is identical to the one described in Section 2.2, with the exception that the AIF is no longer provided and the CTP specific data augmentation is turned off.

315 *The impact of spatial context*

Current clinical systems do not take the spatial context into account to determine the tissue status of a voxel. We are interested in to what extent the spatial context affects the predictions. Hence we introduce two extra networks: **One-voxel (smoothed)** and **One-voxel (deconvolved)**. Both only have three $1 \times 1 \times 1$ convolutions on the original resolution and do not use the subsampled version and hence do not use spatial context. Otherwise, both are identical to the earlier introduced methods.

325 *The impact of the CTP data augmentation*

We investigate the impact of our CTP specific data augmentation and train the proposed network also without the augmentation.

The impact of the metadata

Our network not only uses the imaging data, but also the treatment parameters. In current clinical practice, there is only a distinction between core and penumbra – roughly corresponding to immediate successful thrombectomy and no treatment at all. The additional treatment parameters our method uses might improve the accuracy of the predictions. To that end, we evaluate three variants of the proposed network. One that uses binarized mTICI scores (0-2a vs 2b and 3), one that does not include time from onset to CTP and one that does not have time from CTP to end of thrombectomy.

340 **3. Experiments**

We evaluate the proposed method and its variants on the data of the MR CLEAN trial (described in more detail in the next section, Sec. 3.1). In all experiments, we do a five-fold cross-validation, and report the results aggregated over all the left-out subjects. The hyperparameters of the optimization are experimentally set based on preliminary experiments on the first fold.

3.1. Dataset

MR CLEAN was a multicenter study to investigate the benefit of thrombectomy in acute ischemic stroke (Berkhemer et al., 2015). The study’s inclusion criteria are described in detail in the study protocol; in short: patients were randomized within 6 hours after stroke onset and when a large vessel occlusion was identified in the anterior circulation. In our work, we include all MR CLEAN subjects that had a baseline CTP of sufficient quality and a follow-up non-contrast computed tomography (NCCT) that could be registered to the acute CTP. This results in 188 included subjects. The selection process is shown in Fig. 2.

The MR CLEAN study protocol prescribes follow-up imaging with NCCT at 24 hours and 5 days after onset. Where available, we use the 5 day follow-up otherwise the 24 hour follow-up is used. The follow-up images were semi-automatically delineated and reviewed by an experienced reader (Boers et al., 2013; Bucker et al., 2017).

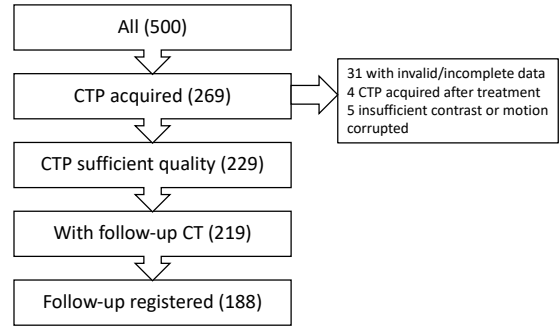


Figure 2: Subject selection.

The follow-up NCCT images are registered to the acute CTP images. First a rigid registration between the follow-up and the acute CTP is performed. Afterwards, a non-rigid registration is done in an attempt to compensate for brain swelling due to edema. The found transformations are applied to the final infarct delineations. Finally, we segment the cerebrospinal fluid (CSF) – in particular the ventricles – from the acute CTP images, and exclude those voxels from the transformed final infarct, under the reasoning that CSF cannot infarct and any overlap between CSF and final infarct is rather due to misalignment.

We manually select in each CTP image an arterial input function (AIF) and use those in all experiments. Hereto, we select the time series of the voxel that shows the largest increase in attenuation coefficient and is located in an unaffected proximal artery.

3.2. Prediction of the final infarct

The prediction of the final infarct is the most important capability of the network. For current clinical practice, the most important metric is the volume of the final infarct, and hence we focus on this metric and the difference in volume between the predicted volume and true volume. As predicted volume, we take the sum of all predicted probabilities, multiplied with the volume per voxel.

From a scientific point of view, the localization of the infarct is also interesting, and hence we also report the Dice and the soft Dice scores. The latter is like the standard Dice score, except that the predictions are not binarized. Non-parametric paired significance tests (bootstrapping) are used to test the significance of the results.

3.3. Prediction of core and perfusion lesion

It is interesting to see how the metadata influences the prediction of the network, in particular the difference between immediate recanalization and no recanalization. To this end, we predict for each subject in the test set the hypothetical final infarct volume in the case of early complete recanalization (mTICI 3 at 60 minutes) and in case of no recanalization at all. In the former scenario, the predicted final infarct should correspond to the infarct core at baseline imaging, whereas in the latter scenario, it should correspond to the perfusion lesion.

Method	Mean soft Dice	Mean Dice	Mean absolute volume error (ml)
Proposed	0.40	0.48	36.7
Proposed (smoothed)	0.39 (**)	0.45 (**)	37.5
Proposed (deconvolved)	0.36 (**)	0.42 (**)	39.1
One-voxel (smoothed)	0.21 (**)	0.15 (**)	45.4 (**)
One-voxel (deconvolved)	0.17 (**)	0.04 (**)	48.6 (**)
Proposed (no data augmentation)	0.39 (*)	0.46 (**)	41.5 (**)
Proposed (binary mTICI)	0.40	0.48	38.5 (*)
Proposed (no time from onset to CTP)	0.40	0.48	38.4 (*)
Proposed (no time from CTP to end of thrombectomy)	0.39 (**)	0.47 (*)	41.1 (**)

Table 1: The mean of the soft Dice, Dice and absolute volume error between the predicted and ground truth final infarct. A paired significance test is performed between the proposed method and its variants, with (*) indicating $P < 0.05$ and (**) indicating $P < 0.005$.

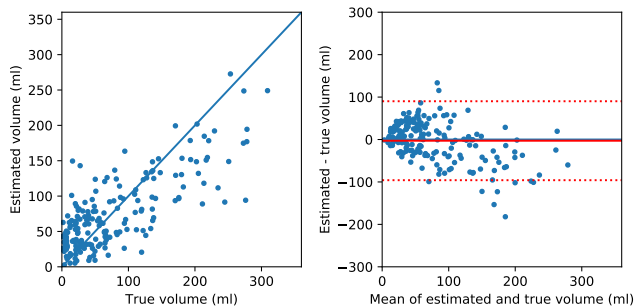


Figure 3: The true and predicted final infarct volumes for all subjects in the testing folds, using the proposed method.

4. Results and discussion

Fig. 3 shows a scatter plot and a Bland-Altman plot of the true and predicted volumes for all subjects in the testing folds using the proposed method. The mean volume error is -2.8 ml (the prediction is a slight underestimation) and the mean absolute volume error is 36.7 ml. The mean Dice score is 0.48. A representative set of predictions is shown in Fig. 4.

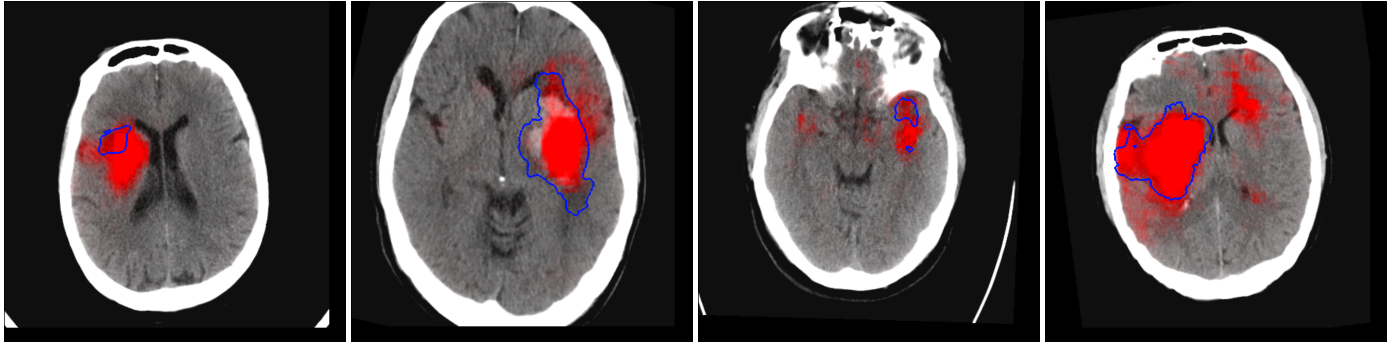
The achieved Dice and volume errors seem respectively very low and high. We believe nevertheless that these are state-of-the-art results on an inherently difficult problem. This is not an image segmentation task, where all the relevant information is contained in the input, but a prediction problem with a ground truth that is defined on images acquired several days later. For example, the ISLES 2017 challenge (Winzeck et al., 2018) has a similar goal, namely predicting the final infarct from acute DWI and MR perfusion imaging, and reported a mean Dice score of 0.32 the best result. Of course, a direct comparison between these values is not possible since the ISLES challenge had different modalities (with especially the DWI imaging being very informative compared to perfusion imaging) and a different population (mostly early successful early recanalization, which results in small lesions and hence lower Dice scores), but it illustrates the difficulty of the problem.

4.1. The impact of spatial context, no deconvolution and data augmentation

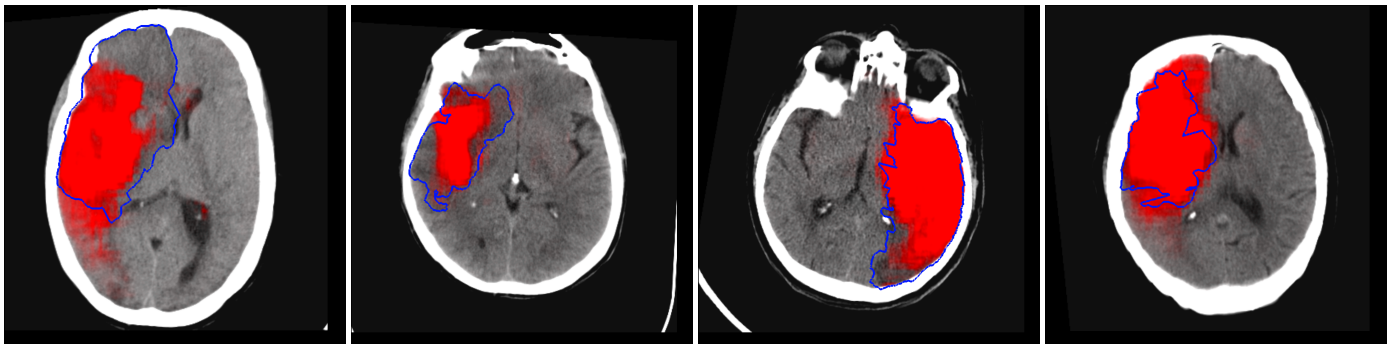
Table 1 shows the mean Dice, soft Dice and absolute volume error of the proposed method and of the various ablated variants. It shows a gradual decrease in performance, both for removing the spatial context as for working on the deconvolved data. The beneficial effect of taking context into account is expected. Perfusion imaging is a noisy modality and suffers from artifacts which results in – often visually – erroneous predictions. In some clinical studies, the results given by the conventional voxelwise perfusion analysis are manually corrected. We hypothesize that a human rater is able to do so, because she takes spatial context into account. By providing spatial context, the network is able to do this as well, which greatly improves results: the mean Dice score more than triples and the volume error drops almost 20%.

The benefit of working on the native data is more remarkable. It can be argued that, if we have a correct physical model, there is no need to re-learn that model a second time from our own limited training data. From the perspective of physics, deconvolution is the right way to approach the problem. However, the way that deconvolution should be regularized is not dictated by physics. We hypothesize that a neural network can do deconvolution better as it has a learned model of the noise and concentration curve shape. We showed this earlier on simulated data (Robben and Suetens, 2018) and see this now confirmed on real data: using the native data instead of the deconvolved data improved the mean Dice score significantly from 0.42 to 0.48. Note however that learning this deconvolution implicitly is data-intensive and the proposed data augmentation is a necessary part, even with our relatively large training set.

Apart from the improved performance, a second advantage of avoiding the explicit deconvolution, is that the selection of the AIF can become part of the network. In this work, we used manually selected AIFs for all experiments, but AIF selection is a difficult problem and has great influence on the deconvolution results. However, if the AIF is an input to the network, it becomes possible to let the network learn to select the AIF from an input patch and have the AIF selection optimized in an end-to-end fashion, such as was explored by Hess et al. (2018).



(a) Subjects with the 20%, 40%, 60% and 80% percentile Dice score in the subgroup with a true final infarct volume less than 100 ml.



(b) Subjects with the 20%, 40%, 60% and 80% percentile Dice score in the subgroup with a true final infarct volume of at least 100 ml.

Figure 4: Predictions of the proposed method on a representative sample of subjects from the test set. The probabilistic predictions are overlaid in red on the follow-up NCCT scan whereas the ground truth final infarct is outlined in blue.

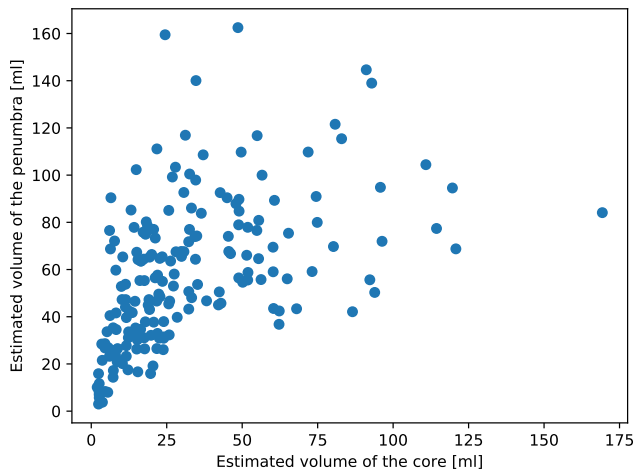


Figure 5: The predicted core and penumbra volumes for all subjects in the testing folds, using the proposed method. Green subjects have a target mismatch profile.

4.2. The impact of the metadata

Fig. 5 shows the volumes of the predicted core and penumbra (perfusion lesion minus core). It shows that the predicted final infarct volumes vary widely based on the treatment: the volume of the penumbra is the difference in final infarct volume between fast complete recanalization and no recanalization. This is as expected and already widely reported in literature.

In the ablation experiments, we also investigated the influence of the metadata on the quality of the predictions. Table 1 shows that in all cases the model became less predictive, which shows that the model effectively uses the metadata. Leaving out the time from CTP to end of treatment has the largest influence, increasing the mean absolute volume error with 12%. Binarizing the mTICI and leaving out the time from onset to CTP have smaller but still significant effect, both increasing the error with 5%. The importance of time from CTP to end of treatment and the precise mTICI scores were already earlier reported in literature (Wheeler et al., 2015; D’Esterre et al., 2015; Kemmling et al., 2015). The influence of time from onset to CTP is more surprising, as earlier literature reported this does not have an influence (D’Esterre et al., 2015).

4.3. The quality of the ground truth

An important limitation of this study is the quality of the ground truth. First, follow-up imaging is always with NCCT, which is less sensitive than MR. Second, the follow-up NCCT scans are a mix of images acquired after 24 hours and after 5

days. It is reported, on the MR CLEAN dataset, that the lesion still grows after 24 hours: Buckner et al. (2017) report that between these time points the median infarct volume increases from 42 ml to 64 ml and more than half of the subjects witness more 30% relative growth. This means that there is variability on our ground truth, purely due to the moment of follow-up acquisition. Part of this volume increase is likely due to genuine delayed tissue death and part is due to edema, which is most pronounced at 3 to 5 days after the stroke. Finally, the brain edema increases the volume of the final infarct, and hence might result in overestimated core and penumbra volumes even though we tried to correct for this by non-rigid registration and CSF exclusion.

4.4. Limited brain coverage

Our dataset is acquired on a variety of scanners, and not all of them have full brain coverage during CTP acquisition. We find that the coverage along the axial direction is on average 65 mm, with the first and third quartiles being 40 and 96 mm. As a consequence, our ground truth final infarct volume is also limited to this field of view, resulting in an underestimation of the final infarct volume. The correlation between the final infarct volume within the CTP volume and the scan length is 0.16.

5. Conclusion

We have shown that a neural network can learn to predict the final infarct volume from acute CTP images and the treatment parameters. This might help clinicians to evaluate the various treatment options. We performed a series of ablation experiments, which tested the contribution of the various components of the method and showed the benefit of our deconvolution-free approach.

Acknowledgements & disclosures

David Robben is supported by an innovation mandate of Flanders Innovation & Entrepreneurship (VLAIO) and is an employee of Icometrix. Anna M.M. Boers, Henk A Marquering, Yvo B.W.E.M. Roos and Charles B.L.M. Majoie are shareholders of Nico.lab. Lucianne L.C.M. Langezaal, Robert J. van Oostenbrugge and Paul Suetens report no disclosures. Wim H. van Zwam reports speaker fees from Stryker and Cerenovus paid to institution. Diederik W.J. Dippel reports funding from the Dutch Heart Foundation, Brain Foundation Netherlands, The Netherlands Organisation for Health Research and Development, Health Holland Top Sector Life Sciences & Health, and unrestricted grants from AngioCare BV, Covidien/EV3®, MEDAC GmbH/LAMEPRO, Penumbra Inc., Top Medical/Concentric, Stryker, Stryker European Operations BV, Medtronic, Thrombolytic Science, LLC for research, all paid to institution. Charles B.L.M. Majoie reports grants from European Commission, CVON/Dutch Heart Foundation, TWIN foundation, Stryker (paid to institution). Erasmus MC receives research grants from Stryker, Medtronic, Penumbra, Siemens Healthineers, GE Healthcare and Philips Healthcare. Robin Lemmens is a senior clinical investigator of FWO Flanders.

The MR CLEAN trial was partly funded by the Dutch Heart Foundation and by unrestricted grants from AngioCare BV, Medtronic/Covidien/EV3®, MEDAC GmbH/LAMEPRO, Penumbra Inc., Stryker®, and Top Medical/Concentric.

References

- Albers, G.W., 2018. Late Window Paradox , 1–5doi:10.1161/STROKEAHA.117.020200.
- Berkhemer, O.A., Fransen, P.S.S., Beumer, D., van den Berg, L.A., Lingsma, H.F., Yoo, A.J., Schonewille, W.J., Vos, J.A., Nederkoorn, P.J., Wermer, M.J.H., van Walderveen, M.A.A., Staals, J., Hofmeijer, J., van Oostayen, J.A., Lycklama à Nijeholt, G.J., Boiten, J., Brouwer, P.A., Emmer, B.J., de Bruijn, S.F., van Dijk, L.C., Kappelle, L.J., Lo, R.H., van Dijk, E.J., de Vries, J., de Kort, P.L.M., van Rooij, W.J.J., van den Berg, J.S.P., van Hasselt, B.A.A.M., Aerden, L.A.M., Dallinga, R.J., Visser, M.C., Bot, J.C.J., Vroomen, P.C., Eshghi, O., Schreuder, T.H., Heijboer, R.J.J., Keizer, K., Tielbeek, A.V., den Hertog, H.M., Gerrits, D.G., van den Berg-Vos, R.M., Karas, G.B., Steyerberg, E.W., Flach, H.Z., Marquering, H.A., Sprengers, M.E.S., Jenniskens, S.F.M., Beenen, L.F.M., van den Berg, R., Koudstaal, P.J., van Zwam, W.H., Roos, Y.B., van der Lugt, A., van Oostenbrugge, R.J., Majoie, C.B.L.M., Dippel, D.W.J., 2015. A Randomized Trial of Intraarterial Treatment for Acute Ischemic Stroke. *New England Journal of Medicine* 372, 11–20. doi:10.1056/NEJMoa1411587.
- Bivard, A., Levi, C., Spratt, N., Parsons, M., 2013. Perfusion CT in acute stroke: a comprehensive analysis of infarct and penumbra. *Radiology* 267, 543–550. doi:10.1148/radiol.12120971.
- Boers, A.M., Marquering, H.A., Jochem, J.J., Besselink, N.J., Berkhemer, O.A., Van Der Lugt, A., Beenen, L.F., Majoie, C.B., 2013. Automated cerebral infarct volume measurement in follow-up noncontrast CT scans of patients with acute ischemic stroke. *American Journal of Neuroradiology* 34, 1522–1527. doi:10.3174/ajnr.A3463.
- Boutelier, T., Kudo, K., Pautot, F., Sasaki, M., 2012. Bayesian hemodynamic parameter estimation by bolus tracking perfusion weighted imaging. *IEEE Transactions on Medical Imaging* 31, 1381–1395. doi:10.1109/TMI.2012.2189890.
- Buckner, A., Boers, A.M., Bot, J.C., Berkhemer, O.A., Lingsma, H.F., Yoo, A.J., van Zwam, W.H., van Oostenbrugge, R.J., van der Lugt, A., Dippel, D.W., Roos, Y.B., Majoie, C.B., Marquering, H.A., 2017. Associations of Ischemic Lesion Volume With Functional Outcome in Patients With Acute Ischemic Stroke. *Stroke* 48, 1233–1240. doi:10.1161/STROKEAHA.116.015156.
- Christensen, S., Mouridsen, K., Wu, O., Hjort, N., Karstoft, H., Thomalla, G., Röther, J., Fiehler, J., Kucinski, T., Østergaard, L., 2009. Comparison of 10 Perfusion MRI Parameters in 97 Sub-6-Hour Stroke Patients Using Voxel-Based Receiver Operating Characteristics Analysis. *Stroke* 40, 2055–2061. doi:10.1161/STROKEAHA.108.546069.
- D’Esteire, C.D., Boesen, M.E., Ahn, S.H., Pordeli, P., Najm, M., Minhas, P., Davari, P., Fainardi, E., Rubiera, M., Khaw, A.V., Zini, A., Frayne, R., Hill, M.D., Demchuk, A.M., Sajobi, T.T., Forkert, N.D., Goyal, M., Lee, T.Y., Menon, B.K., 2015. Time-dependent computed tomographic perfusion thresholds for patients with acute ischemic stroke. *Stroke* 46, 3390–3397. doi:10.1161/STROKEAHA.115.009250.
- Fahmi, F., Marquering, H.A., Streekstra, G.J., Beenen, L.F., Velthuis, B.K., VanBavel, E., Majoie, C.B., 2012. Differences in CT perfusion summary maps for patients with acute ischemic stroke generated by 2 software packages. *American Journal of Neuroradiology* 33, 2074–2080. doi:10.3174/ajnr.A3110.
- Fieselmann, A., Kowarschik, M., Ganguly, A., Hornegger, J., Fahrigr, R., 2011. Deconvolution-Based CT and MR Brain Perfusion Measurement: Theoretical Model Revisited and Practical Implementation Details. *International Journal of Biomedical Imaging* 2011, 1–20. doi:10.1155/2011/467563, arXiv:467563.
- Guenego, A., Mlynash, M., Christensen, S., Kemp, S., Heit, J.J., Lansberg, M.G., Albers, G.W., 2018. Hypoperfusion ratio predicts infarct growth during transfer for thrombectomy. *Annals of Neurology* 84, 616–620. doi:10.1002/ana.25320.
- Hacke, W., Kaste, M., Bluhmki, E., Brozman, M., Dávalos, A., Guidetti, D., Larue, V., Lees, K.R., Medeghri, Z., Machnig, T., Schneider, D., von Kummer, R., Wahlgren, N., Toni, D., 2008. Thrombolysis with Alteplase 3 to 4.5

- Hours after Acute Ischemic Stroke. *New England Journal of Medicine* 359, 1317–1329. doi:10.1056/NEJMoa0804656.
- 615 He, K., Zhang, X., Ren, S., Sun, J., 2015. Delving Deep into Rectifiers: Surpassing Human-Level Performance on ImageNet Classification, in: 2015 IEEE International Conference on Computer Vision (ICCV), IEEE, pp. 1026–1034. doi:10.1109/ICCV.2015.123, arXiv:1502.01852.
- 620 Hess, A., Meier, R., Kaesmacher, J., Jung, S., Scalzo, F., Liebeskind, D., Wiest, R., McKinley, R., 2018. Synthetic Perfusion Maps: Imaging Perfusion Deficits in DSC-MRI with Deep Learning. *Arxiv*, 1–11 arXiv:1806.03848.
- 625 Ho, K.C., El-Saden, S., Scalzo, F., Bui, A.A., Arnold, C.W., 2016. Predicting Acute Ischemic Stroke Tissue Fate Using Deep Learning on Source Perfusion MRI, in: International Stroke Conference.
- Ioffe, S., Szegedy, C., 2015. Batch Normalization: Accelerating Deep Network Training by Reducing Internal Covariate Shift, in: Proceedings of the 32nd International Conference on Machine Learning, Lille, France. arXiv:1502.03167.
- 630 Kamnitsas, K., Ledig, C., Newcombe, V.F.J., Simpson, J.P., Kane, A.D., Menon, D.K., Rueckert, D., Glocker, B., 2017. Efficient multi-scale 3D CNN with fully connected CRF for accurate brain lesion segmentation. *Medical Image Analysis* 36, 61–78. doi:10.1016/j.media.2016.10.004.
- 635 Kemmling, A., Flottmann, F., Forkert, N.D., Minnerup, J., Heindel, W., Thoma, G., Eckert, B., Knauth, M., Psychogios, M., Langner, S., Fiehler, J., 2015. Multivariate Dynamic Prediction of Ischemic Infarction and Tissue Salvage as a Function of Time and Degree of Recanalization. *Journal of Cerebral Blood Flow & Metabolism* 35, 1397–1405. doi:10.1038/jcbfm.2015.144.
- 640 Kleine, J.F., Kaesmacher, M., Wiestler, B., Kaesmacher, J., 2017. Tissue-Selective Salvage of the White Matter by Successful Endovascular Stroke Therapy. *Stroke* 48, 2776–2783. doi:10.1161/STROKEAHA.117.017903.
- 645 Liebeskind, D.S., 2003. Collateral Circulation. *Stroke* 34, 2279–2284. doi:10.1161/01.STR.0000086465.41263.06.
- 650 McKinley, R., Häni, L., Gralla, J., El-Koussy, M., Bauer, S., Arnold, M., Fischer, U., Jung, S., Mattmann, K., Reyes, M., Wiest, R., 2017. Fully automated stroke tissue estimation using random forest classifiers (FASTER). *Journal of Cerebral Blood Flow and Metabolism* 37, 2728–2741. doi:10.1177/0271678X16674221.
- Meijs, M., Christensen, S., Lansberg, M.G., Albers, G.W., Calamante, F., 2016. Analysis of perfusion MRI in stroke: To deconvolve, or not to deconvolve. *Magnetic Resonance in Medicine* 76, 1282–1290. doi:10.1002/mrm.26024.
- 655 Nielsen, A., Hansen, M.B., Tietze, A., Mouridsen, K., 2018. Prediction of Tissue Outcome and Assessment of Treatment Effect in Acute Ischemic Stroke Using Deep Learning. *Stroke* 49, 1394–1401. doi:10.1161/STROKEAHA.117.019740.
- 660 Nogueira, R.G., Jadhav, A.P., Haussen, D.C., Bonafe, A., Budzik, R.F., Bhuva, P., Yavagal, D.R., Ribo, M., Cognard, C., Hanel, R.A., Sila, C.A., Hassan, A.E., Millan, M., Levy, E.L., Mitchell, P., Chen, M., English, J.D., Shah, Q.A., Silver, F.L., Pereira, V.M., Mehta, B.P., Baxter, B.W., Abraham, M.G., Cardona, P., Veznedaroglu, E., Hellinger, F.R., Feng, L., Kirmani, J.F., Lopes, D.K., Jankowitz, B.T., Frankel, M.R., Costalat, V., Vora, N.A., Yoo, A.J., Malik, A.M., Furlan, A.J., Rubiera, M., Aghaebrahim, A., Olivot, J.M., Tekle, W.G., Shields, R., Graves, T., Lewis, R.J., Smith, W.S., Liebeskind, D.S., Saver, J.L., Jovin, T.G., 2018. Thrombectomy 6 to 24 Hours after Stroke with a Mismatch between Deficit and Infarct. *New England Journal of Medicine* 378, 11–21. doi:10.1056/NEJMoa1706442.
- 670 Pinto, A., Pereira, S., Meier, R., Alves, V., Wiest, R., Silva, C.A., Reyes, M., 2018. Enhancing Clinical MRI Perfusion Maps with Data-Driven Maps of Complementary Nature for Lesion Outcome Prediction, in: Frangi, A.F., Schnabel, J.A., Davatzikos, C., Alberola-López, C., Fichtinger, G. (Eds.), MICCAI, Springer International Publishing, pp. 107–115. doi:10.1007/978-3-030-00931-1_13, arXiv:1806.04413.
- 675 Robben, D., Bertels, J., Willems, S., Vandermeulen, D., Maes, F., Suetens, P., 2018. DeepVoxNet: voxel-wise prediction for 3D images. Technical Report KUL/ESAT/PSI/1801. KU Leuven.
- Robben, D., Suetens, P., 2018. Perfusion parameter estimation using neural networks and data augmentation, in: MICCAI SWITCH, Granada, Spain. arXiv:1810.04898.
- 680 Scalzo, F., Hao, Q., Alger, J.R., Hu, X., Liebeskind, D.S., 2012. Regional prediction of tissue fate in acute ischemic stroke. *Annals of Biomedical Engineering* 40, 2177–2187. doi:10.1007/s10439-012-0591-7, arXiv:NIHMS150003.
- Sourbron, S., Luybaert, R., Morhard, D., Seelos, K., Reiser, M., Peller, M., 2007. Deconvolution of bolus-tracking data: a comparison of discretization methods. *Physics in Medicine and Biology* 52, 6761–6778. doi:10.1088/0031-9155/52/22/014.
- Wheeler, H.M., Mlynash, M., Inoue, M., Tipirini, A., Liggins, J., Bammer, R., Lansberg, M.G., Kemp, S., Zaharchuk, G., Straka, M., Albers, G.W., 2015. The Growth Rate of Early DWI Lesions is Highly Variable and Associated with Penumbra Salvage and Clinical Outcomes following Endovascular Reperfusion. *International Journal of Stroke* 10, 723–729. doi:10.1111/ijvs.12436, arXiv:15334406.
- Wintermark, M., Flanders, A.E., Velthuis, B., Meuli, R., Van Leeuwen, M., Goldsher, D., Pineda, C., Serena, J., Van Der Schaaf, I., Waaijer, A., Anderson, J., Nesbit, G., Gabrieli, I., Medina, V., Quiles, A., Pohlman, S., Quist, M., Schnyder, P., Bogouslavsky, J., Dillon, W.P., Pedraza, S., 2006. Perfusion-CT assessment of infarct core and penumbra: Receiver operating characteristic curve analysis in 130 patients suspected of acute hemispheric stroke. *Stroke* 37, 979–985. doi:10.1161/01.STR.0000209238.61459.39.
- Winzeck, S., Hakim, A., McKinley, R., Pinto, J.A.A.D.S.R., Alves, V., Silva, C., Pisov, M., Krivov, E., Belyaev, M., Monteiro, M., Oliveira, A., Choi, Y., Paik, M.C., Kwon, Y., Lee, H., Kim, B.J., Won, J.H., Islam, M., Ren, H., Robben, D., Suetens, P., Gong, E., Niu, Y., Xu, J., Pauly, J.M., Lucas, C., Heinrich, M.P., Rivera, L.C., Castillo, L.S., Daza, L.A., Beers, A.L., Arbelaez, P., Maier, O., Chang, K., Brown, J.M., Kalpathy-Cramer, J., Zaharchuk, G., Wiest, R., Reyes, M., 2018. ISLES 2016 and 2017-Benchmarking Ischemic Stroke Lesion Outcome Prediction Based on Multispectral MRI. *Frontiers in Neurology* 9. doi:10.3389/fneur.2018.00679.
- Wu, O., Koroshetz, W.J., Ostergaard, L., Buonanno, F.S., Copen, W.a., Gonzalez, R.G., Rordorf, G., Rosen, B.R., Schwamm, L.H., Weisskoff, R.M., Sorensen, a.G., 2001. Predicting Tissue Outcome in Acute Human Cerebral Ischemia Using Combined Diffusion- and Perfusion-Weighted MR Imaging. *Stroke* 32, 933–942. doi:10.1161/01.STR.32.4.933.

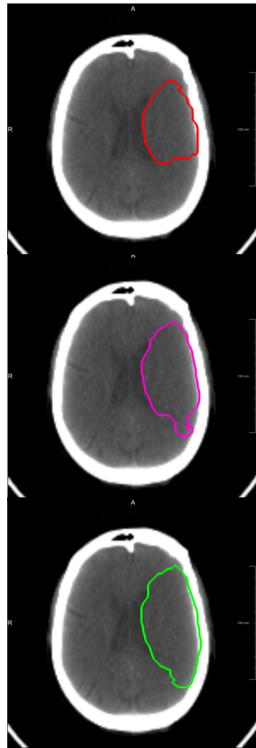
*Graphical Abstract

Acute ischemic stroke patient

Baseline CT perfusion
+
(Hypothetical) treatment parameters

Prediction of final infarct

- Multi-scale CNN
 - On the native measurements; without explicit deconvolution
 - Trained and validated on multicenter dataset
 - Improved performance

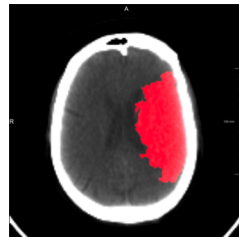


*Immediate
recanalization*
78 ml

*Actual treatment
(TICI 2A after 3h)*
117 ml

No recanalization
141 ml

**Follow-up
NCCT after
5 days**



vs.

121 ml

*Highlights

- prediction of the final infarct volume in acute ischemic stroke patients
- takes into account the baseline CTP images and the time and treatment parameters
- convolutional neural network trained and validated on a multicenter dataset
- operates on the native CTP measurements without explicit deconvolution
- improved performance over classical approach

*Conflict of Interest Form

David Robben
Employee of icometrix

Henk Marquering
Cofounder and shareholder of Nico.lab

Yvo Roos
shareholder of Nico.lab, a company that focuses on the use of artificial intelligence for medical image analysis

Anna Boers
shareholder of Nico.lab, a company that focuses on the use of artificial intelligence for medical image analysis

Robert van Oostenbrugge
None

Wim van Zwam
Speaker fees from Stryker and Cerenovus paid to institution

Aad Lugt
Erasmus MC receives research grants from Stryker, Medtronic, Pernumbra, Siemens Healthineers, GE Healthcare and Philips Healthcare

Diederik Dippel
Funding from the Dutch Heart Foundation, Brain Foundation Netherlands, The Netherlands Organisation for Health Research and Development, Health Holland Top Sector Life Sciences & Health, and unrestricted grants from AngioCare BV, Covidien/EV3®, MEDAC GmbH/LAMEPRO, Penumbra Inc., Top Medical/Concentric, Stryker, Stryker European Operations BV, Medtronic, Thrombolytic Science, LLC for research, all paid to institution.

Lucianne Langezaal
None

Charles Majoie
Grants from European Commission, CVON/Dutch Heart Foundation, TWIN foundation, Stryker (paid to institution); shareholder of Nico.lab, a company that focuses on the use of artificial intelligence for medical image analysis

Robin Lemmens
Senior clinical investigator of FWO Flanders.

Paul Suetens
None